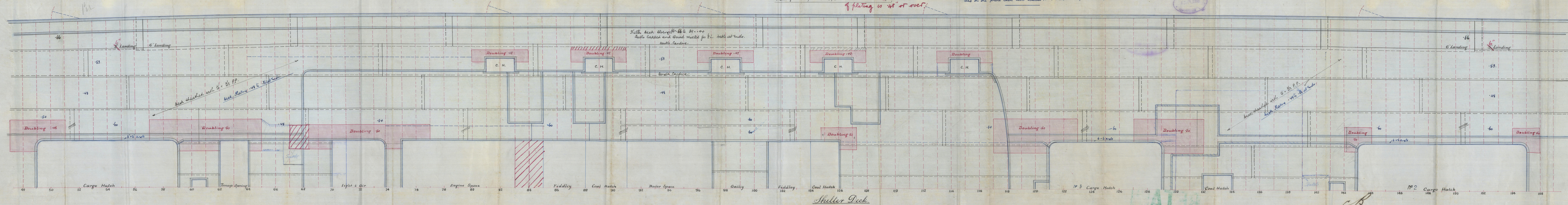


Scale $\frac{1}{4}" = 1$ Foot

— List of additional measurements to be fitted —

Large double top at Hatch, 170 lbs. Hatch neck band (as shown).
Shells neck string increased 10% for $\frac{1}{2}$ length
.05 on shells neck for $\frac{1}{2}$ L. amideulpho (4 between hatchco.)
+ .05 additional on shells neck plating about 170 & Hatch,
also on one plate each side between 170 & Hatch. Engine Casing

Bulls of Beck plating lapped ~~to be riveted except~~ where thickness of plating is .48" or over.



C.B.
23.2.11



ARK & CO., Ltd.
GLADDERS
17 FEB 1911

W804-0129 Lloyd's Register Foundation

No 310+313

Shelter Deck Plan



RETAIL



© 2021

Lloyd's Register
Foundation

W 804-0129