

# BOILER N° 487

WORKING PRESSURE 130 LBS. PER SQ. INCH TO LLOYDS SURVEY.

TESTED TO 260 LBS BY HYDRAULIC PRESSURE.

Scale 1" = One foot.

PERCENTAGE OF JOINT.

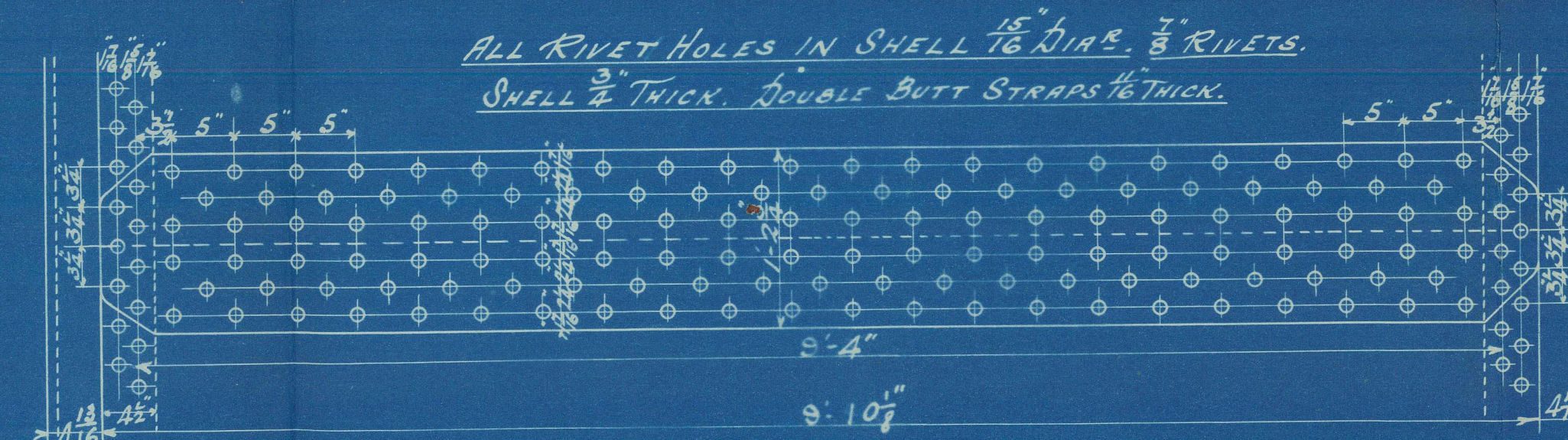
PLATE 81.25 %.

RIVET 82.11 %.

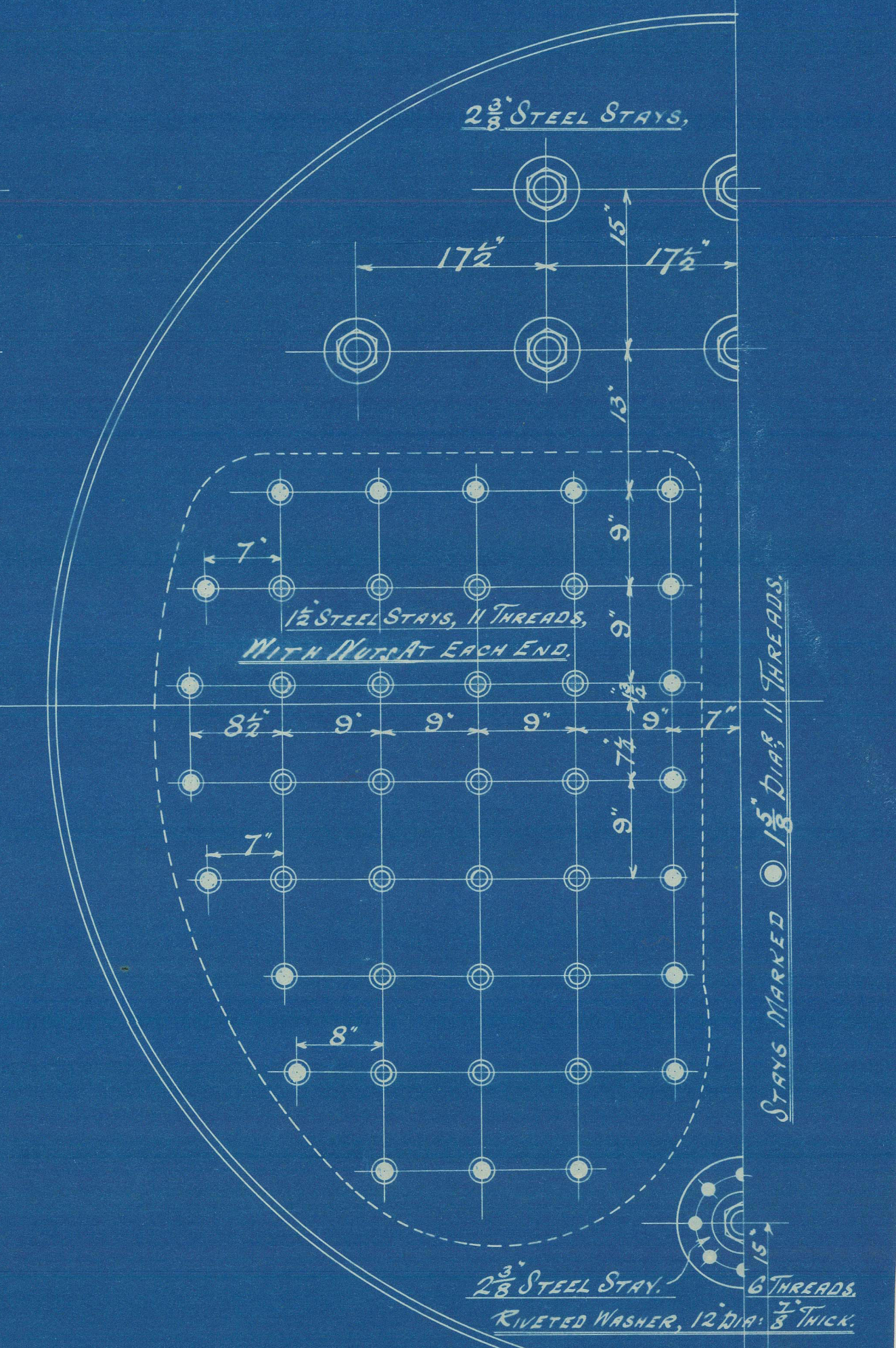
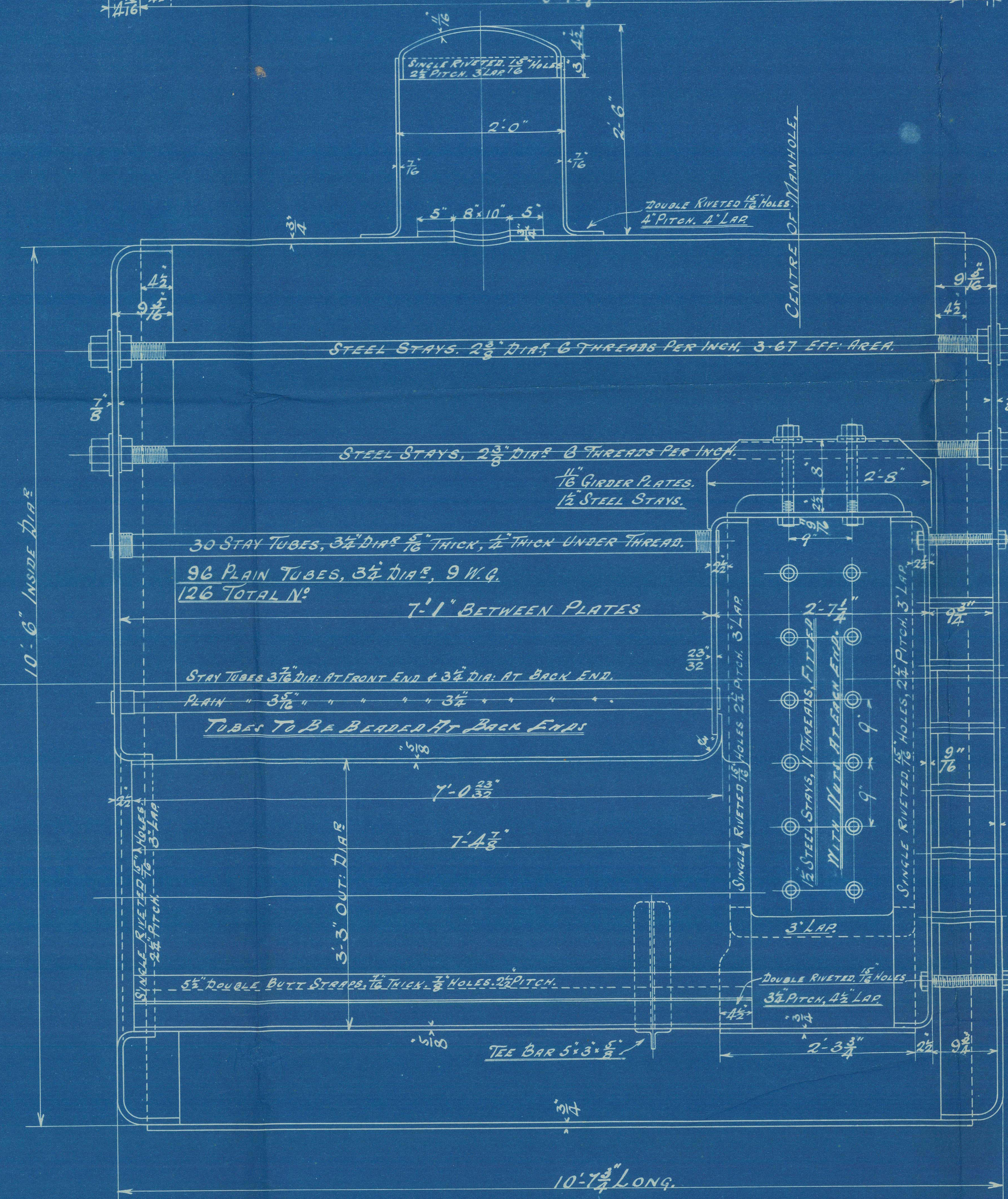
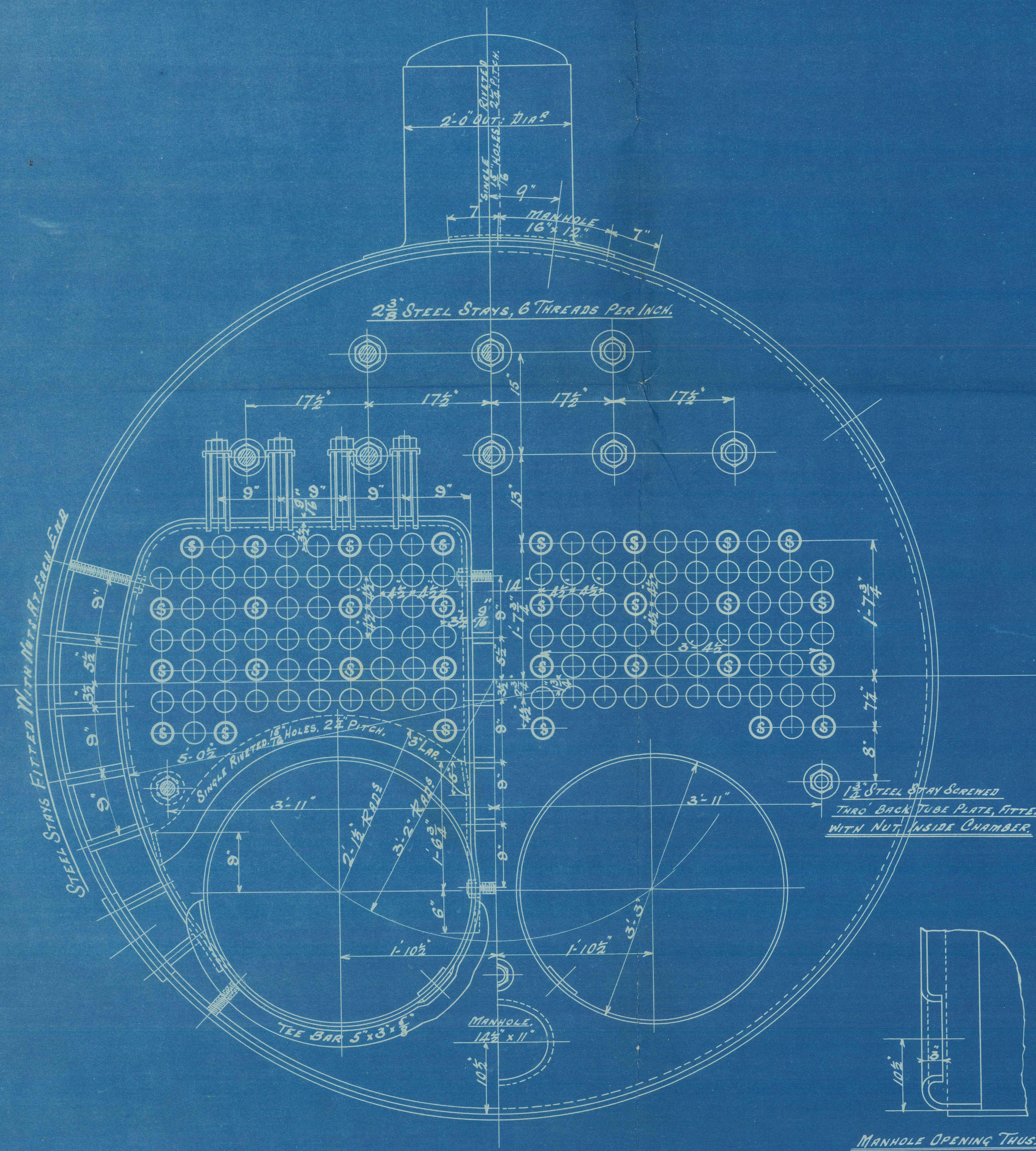
HEATING SURFACE.

TUBES	759
COMB. CHAMBERS	114
FURNACES	88
TUBE PLATES	41
TOTAL	1002

GRATE AREA 35 #.



SHELL & BUTT STRAPS 28 TO 32 TONS T.S.  
ALL OTHER PLATES 26 TO 30 TONS T.S.  
PLATES, RIVETS, & STAYS OF STEEL.  
TUBES OF IRON.



JOHN STEPHENSON & CO.  
ENGINEERS  
NEWCASTLE-ON-TYNE

W801-0098





Newcastle M Tyne  
R.<sup>d</sup> Stephens & Co  
No 487 Boila  
Gorte Ship? & Rep? Co S-S-69.

Amended Plan.

No 6796
Lloyds List
260
J. H. H
3-6-04

S.S. Portsea

Newcastle Report

1904-7631

Hull 16257



© 2021

Lloyd's Register  
Foundation

W801-0078