

10.9.27

JOB N° 570. S.S. "CADILLAC". MIDSHIP SECTION.

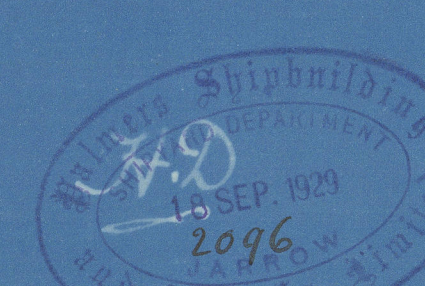
LENGTH 530'-0" x BREADTH EXT. 66'-6" DEPTH MLD 34'-0"

SCALE 1/2" = 1' 0"

ISHERWOOD SYSTEM (PATENT)

LLOYD'S NUMERALS

BREADTH MLD 66.15
DEPTH MLD 34.00
100.15 TRANS N°
LENGTH B-P 530
53079.00 LONG. N°



L TO SHELTER DK 12.63

1" RIVETS

RIVETS SPACED 6 DIAS. APART

RIVETS SPACED 6 DIAS. APART

1" RIVETS

RIVETS SPACED 6 DIAS. APART

RIVETS SPACED 6 DIAS. APART

RIVETS SPACED 4 1/2 DIAS. APART FOR 11 RIVETS EACH SIDE B.H. 9 TRANS., 6 DIAS. ELSEWHERE

RIVETS SPACED 4 1/2 DIAS. APART FOR 11 RIVETS EACH SIDE B.H. 9 TRANS., 6 DIAS. ELSEWHERE

DITTO

RIVETS SPACED 3 1/2 DIAS. APART FOR 11 RIVETS EACH SIDE B.H. 9 TRANS., 6 DIAS. ELSEWHERE

DITTO

DITTO

DITTO

DITTO

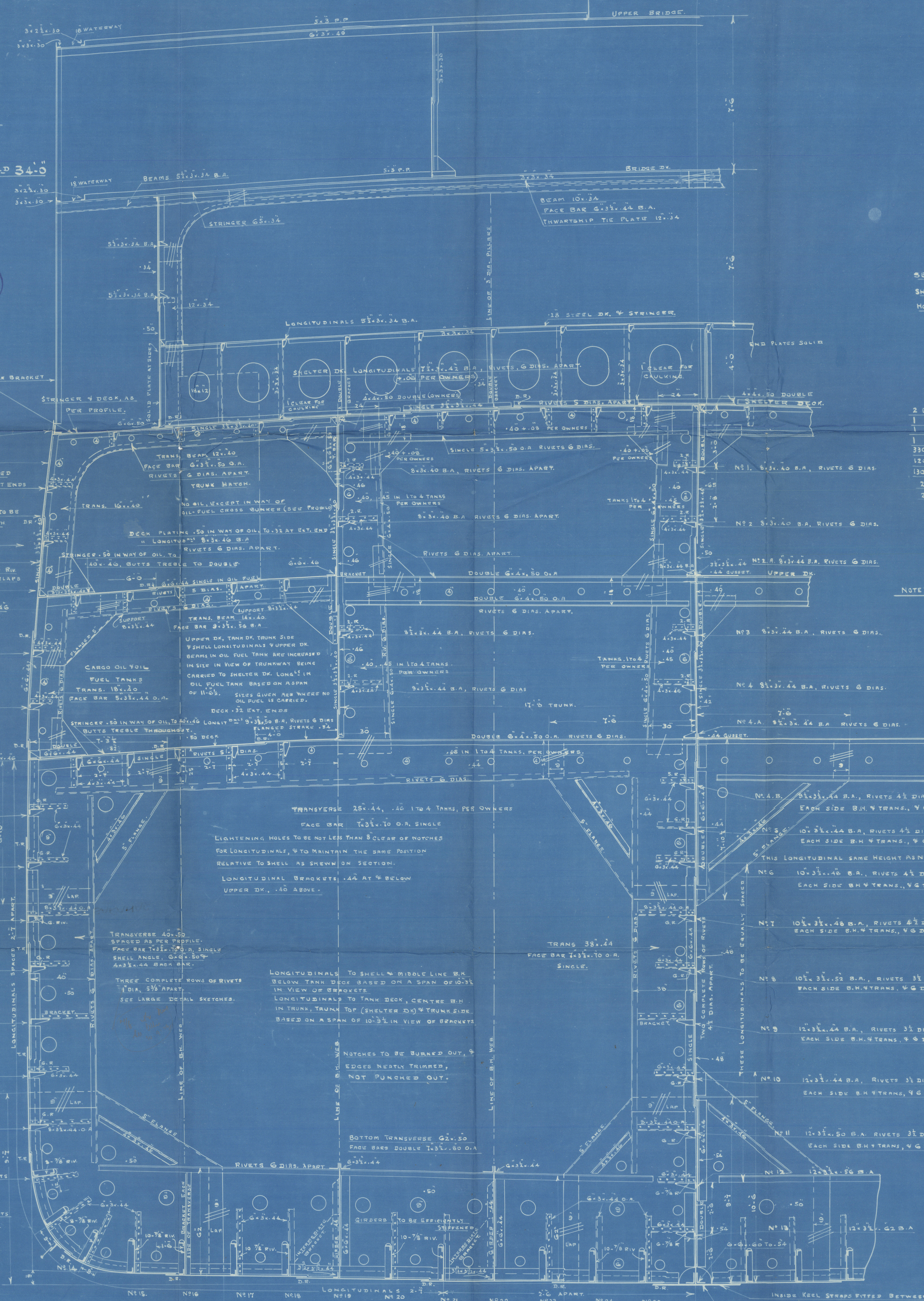
LONGITUDINALS N° 13 TO 26, RIVETS SPACED 3 1/2 DIAS. APART FOR 11 RIV. EACH SIDE B.H. 9 TRANS., 6 DIAS. ELSEWHERE.

LONGITUDINALS IN FLAT OF FLOOR IN W.B. TANK FORWARD, 9 N° 1 OIL TANK. RIVETS SPACED 4 1/2 DIAS. THROUGHOUT.

BOTTOM PLATING 1/4" TO 3/8". MIDSHIP THICKNESS OF BOTTOM PLATING ON FLAT OF FLOOR MAINTAINED TO COLLISION B.H., B.C., D.E., F STRAKES TO BE INCREASED 1/8" (OWNER'S EXTRA) OVER TANKS 3 TO 11.

BUTTS DOUBLE STRAPS, TREBLE RIVETS, FOR 3/4 LG., TO TREBLE OVERLAPS AT ENDS. INSIDE STRAPS STOPPED AT LONGITUDINALS.

N° 848.



EQUIPMENT NUMBER

SECOND NUMBER	53079
SHELTER DK	530 x 9 x 3
HOUSE APT.	79 x 7.5
BRIDGE	25 x 11.5
EQUIPMENT N°	56699

EQUIPMENT

2 BOWER ANCHORS, STOCKLESS	95 cwt + 10% = 104 1/2 cwt, as specified
1 " " EX. STOCK (TROTMAN'S)	65 " + 10% = 71 1/2 " " " "
1 " " " (KODGES)	20 " " " " " " " "
1 KEDGE " " " "	14 " " " " " " " "
330 FATHOMS STUD CHAIN CABLE	2 1/2" DIA.
120 " STREAM STEEL WIRE FLEXIBLE 6 DIA.	" " " " " " " "
130 " TOWLINE " " " " " " " "	" " " " " " " "
2 @ 100 FATHOMS 2 1/2" FLEXIBLE WIRE HAWSER ON REELS	" " " " " " " "
2 @ 100 " 8 MANILLA HAWSER LAYED	" " " " " " " "

NOTE: ALL SECTIONS TO BE TO NEWEST BRITISH STANDARD SECTION.

14
20.9.27

✓
Cadillac & SARANAC
alterations &c

Mid-Section

S.S. "CADILLAC"

NEWCASTLE ON TYNE.

Report No. 85855.

S.S. "SARANAC"

NEWCASTLE ON TYNE.

Report No. 86982

W 80-0078



© 2020

Lloyd's Register
Foundation