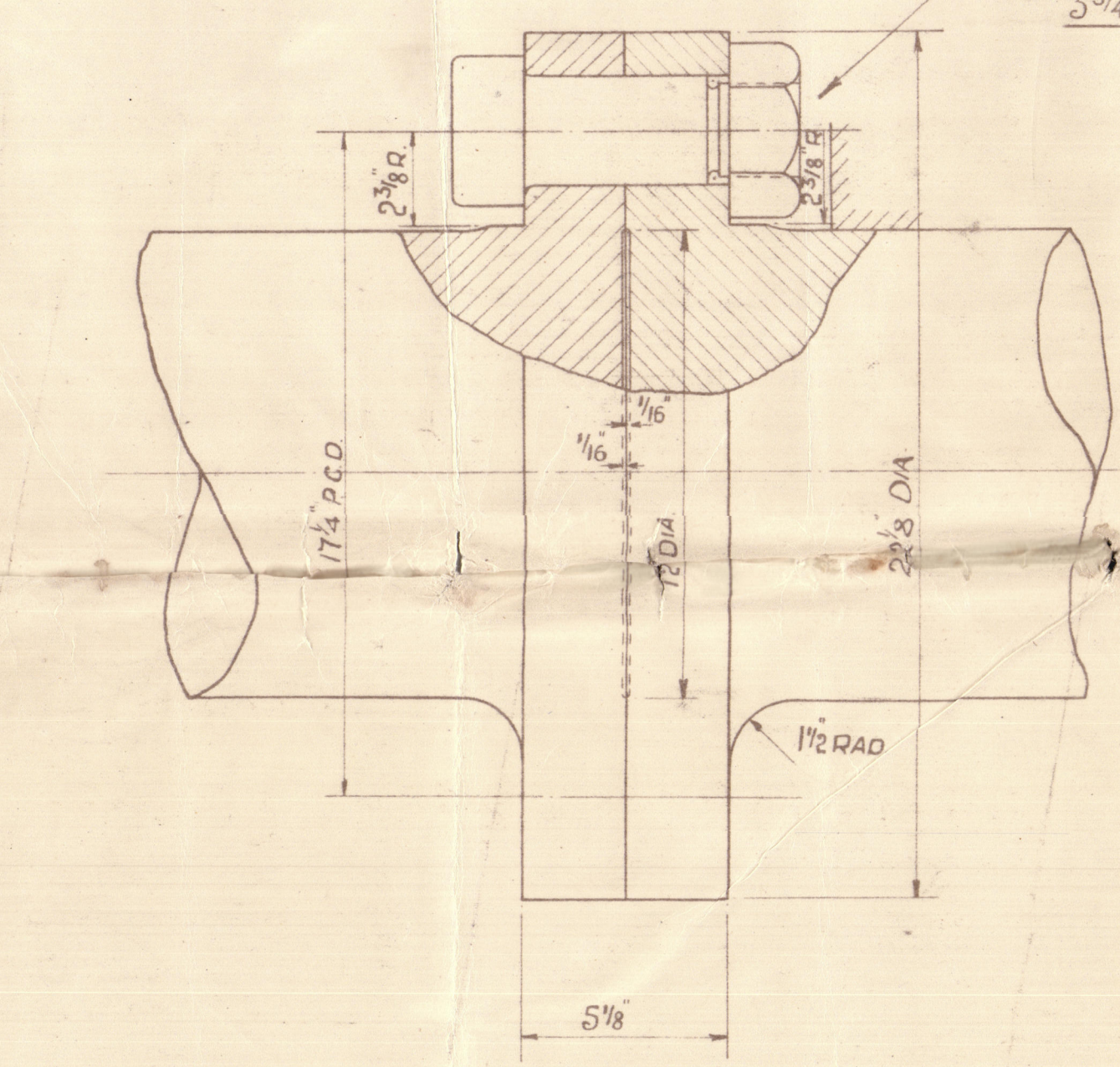
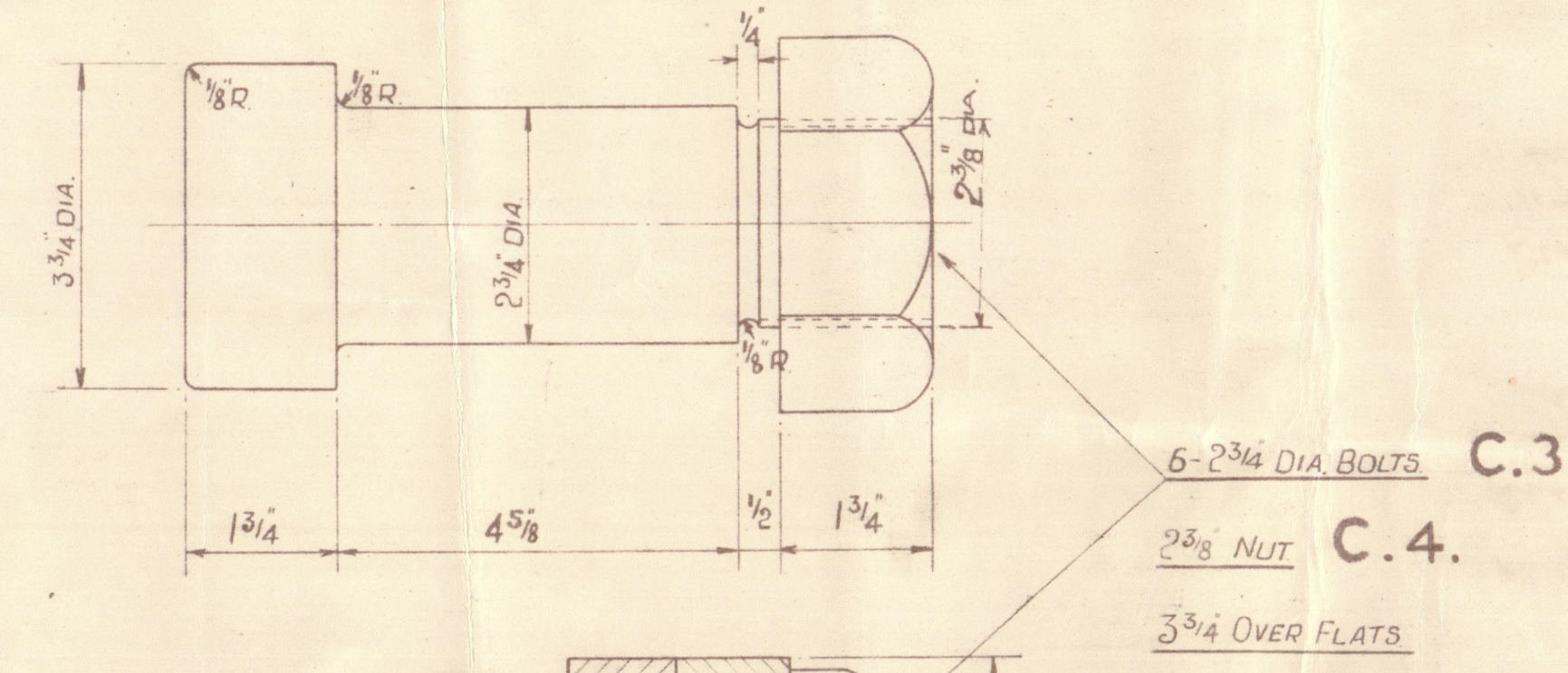
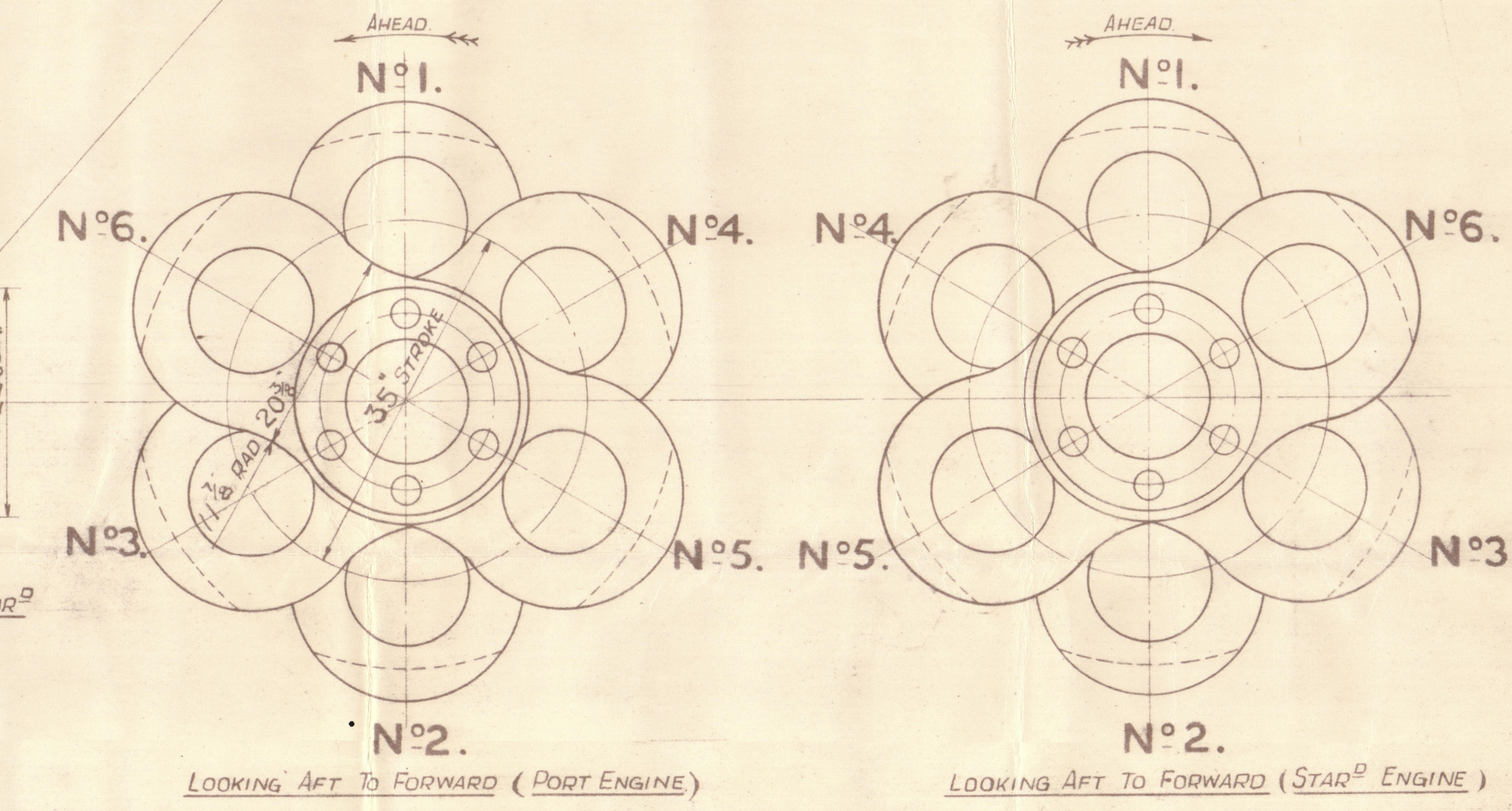
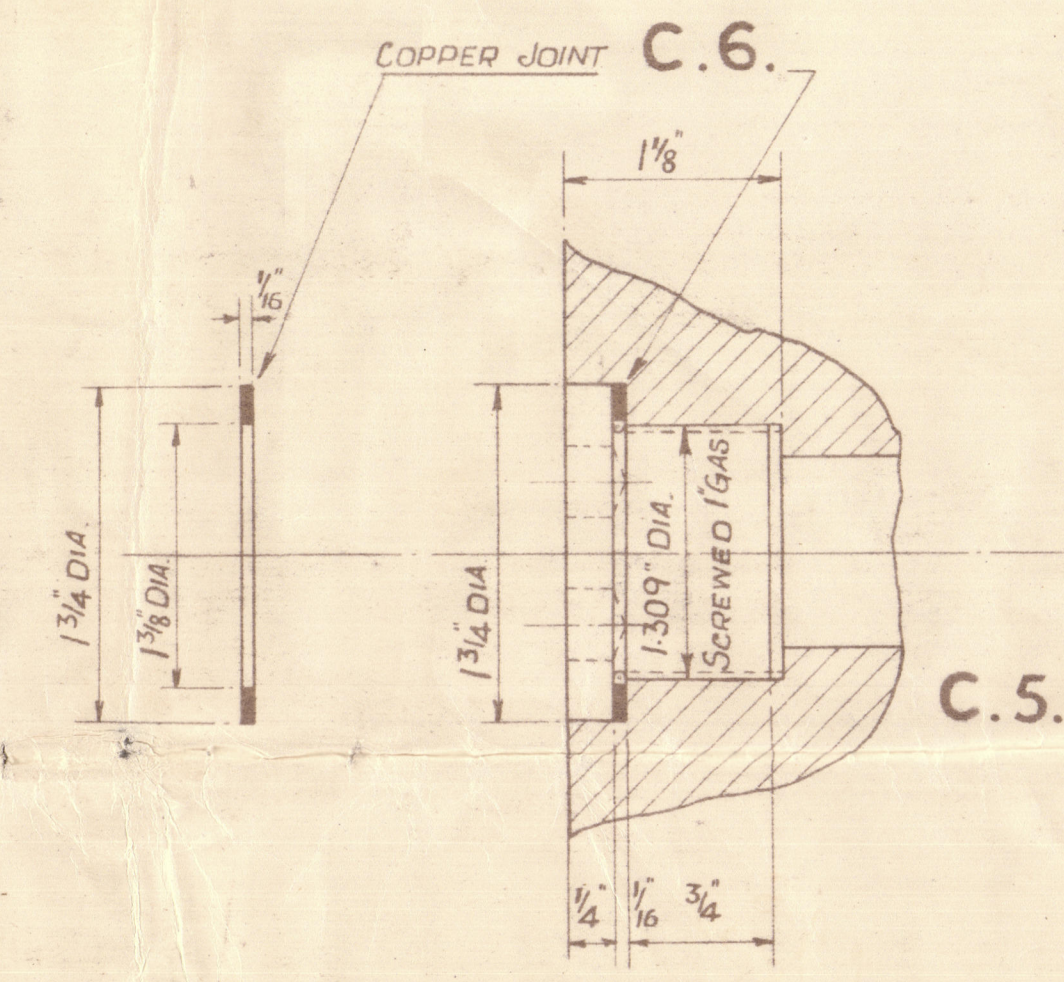


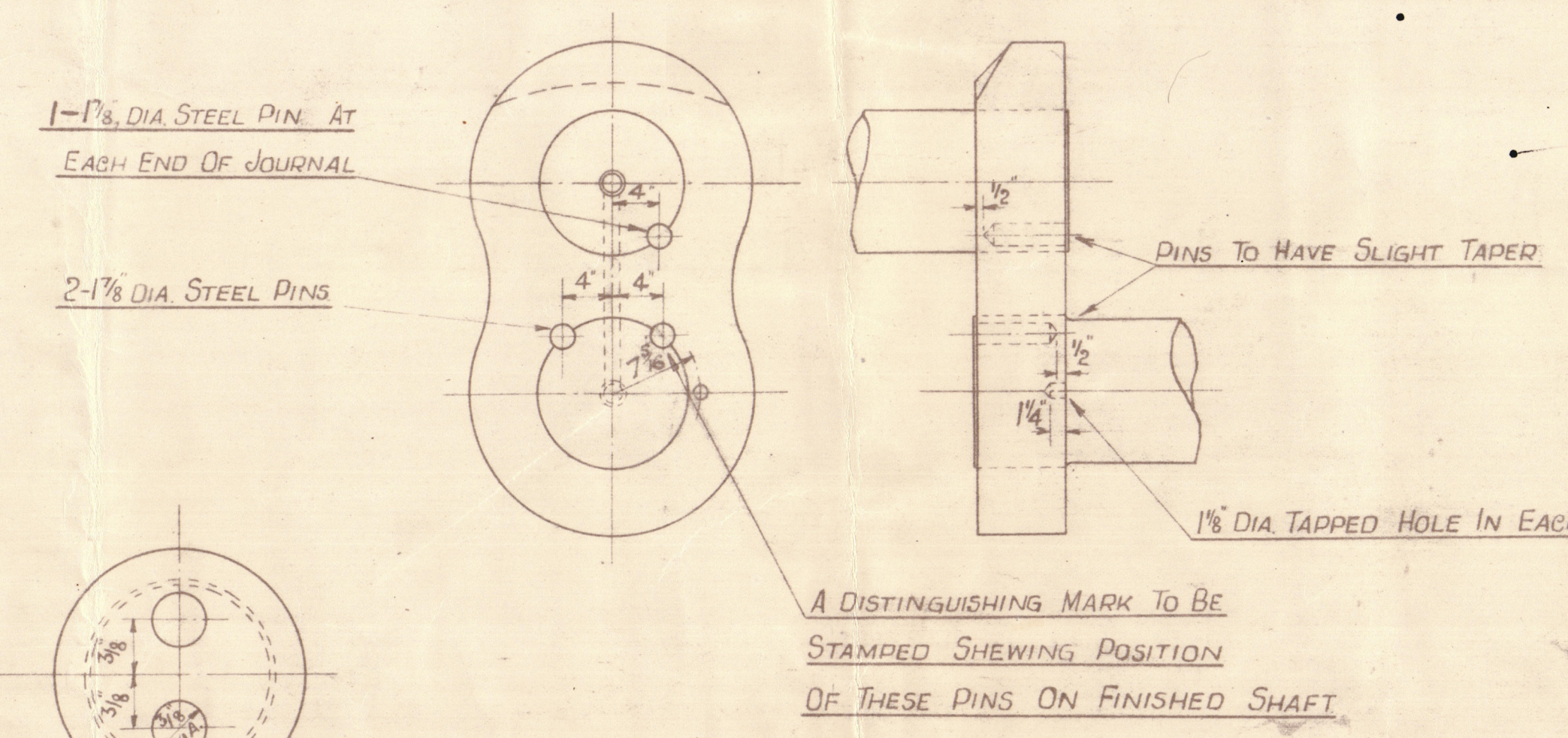
HOLES IN THIS COUPLING BORED 1/8\"/>



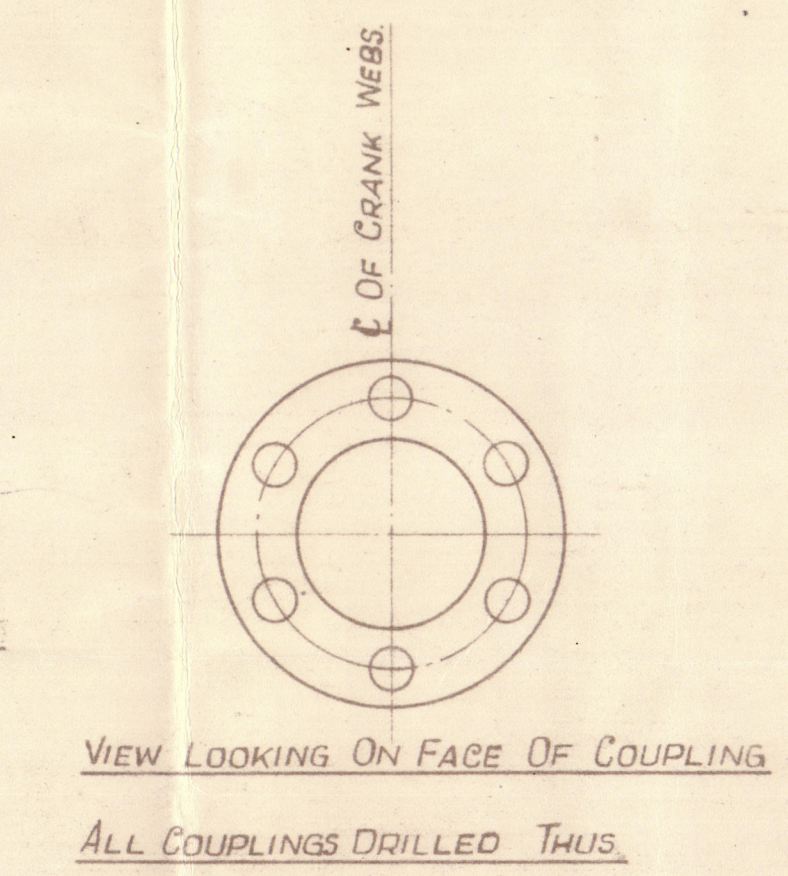
DETAIL OF OIL THROWERS ON COUPLINGS A & B.



DETAIL OF PLUGS FOR OIL HOLES
PLUGS TO BE LOCKED AFTER FINALLY FIXING.



DETAIL OF COUNTERSINK OF OIL HOLES ON JOURNALS



VIEW LOOKING ON FACE OF COUPLING
ALL COUPLINGS DRILLED THUS.

HOLES IN COUPLINGS TO BE BORED
1/8\"/>

SPARE SHAFT
TO BE SAME AS C.1.

GROUP NO.	DESCRIPTION	MATERIAL	NO. OFF	PORT	STAR	SPARE	REMARKS	WEIGHT EACH PART LBS.
C/1	CRANK SHAFT	SMI STEEL	2	2		1		10050
C/2	"	"	1	1				10050
C/3	COUPLING BOLTS.	STEEL	12	12		6		16
C/4	NUTS.	W. I.	12	12				3.7
C/5	PLUGS	STEEL	12	12				.6
C/6	JOINTS FOR ABOVE	SOFT COPPER	12	12				

MAX. DESIGNED PRESSURE - 500 LBS. P.S.I.

TO LLOYDS SURVEY

ENGINE	SINGLE ACTING	Z-CYCLE
CYLINDER DIA.	17"	
NO. OF CYLINDERS	6	
STROKE	35"	
LENGTH OF CONNECTING ROD	Z STROKES.	
SPAN OF BEARINGS ADJACENT		
TO A CRANK MEASURED FROM		
INNER EDGE TO INNER EDGE	27 3/8"	

DRC. O.I.

N° 1122.
CRANK SHAFT.

SCALES 1", 3/8", 1/2", 1/4", 1/8", 1/16".

DESIGNED BY G.J.K.
NS & WAF
1/4
30/6/20.

ENGINEERED BY W. H. RICHARDSON
13 AUG 1920
NEPTUNE WORKS
WALKER
NEWCASTLE-ON-TYNE

ENGINE 17" x 35"
© 2020
Lloyd's Register
Marine Foundation

Supra 1172



© 2020

Lloyd's Register
Foundation



original plan cancelled & retained in
London office 23/8/20

amended plan
of Crankshafts

S 14 to R

1122 oil Synges

17/8/26

plan approved 23/8/20

See Secretary's letter.

SH & WTR advised 24/8/20
L95

Diameter of fly wheel shaft & main shaft

115/8 - into requirements of Rules

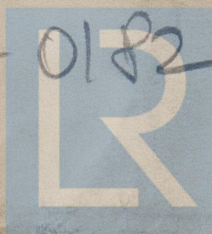
See Secretary letter dated 22/august 20

"Badalona" ex. S. S. "Arms"

NEWCASTLE ON TYNE.

Report No. 77086.

W18-0182



© 2020

Lloyd's Register
Foundation