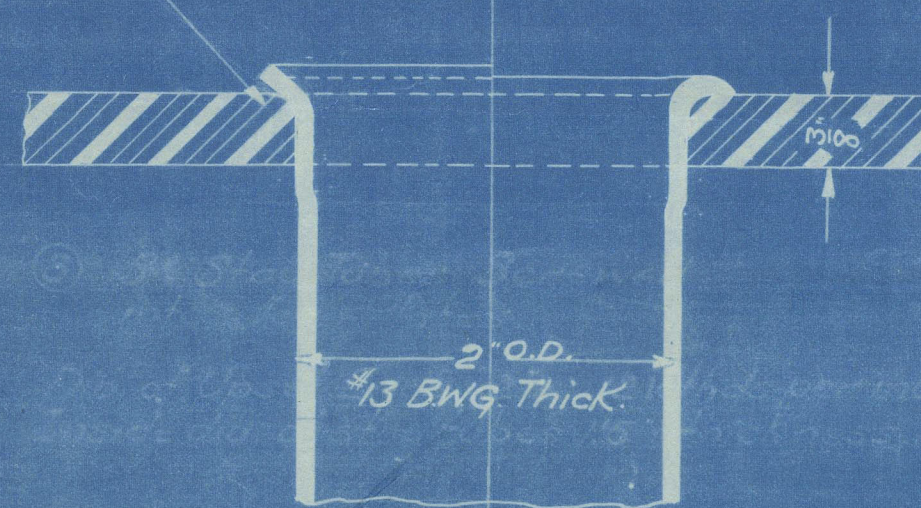


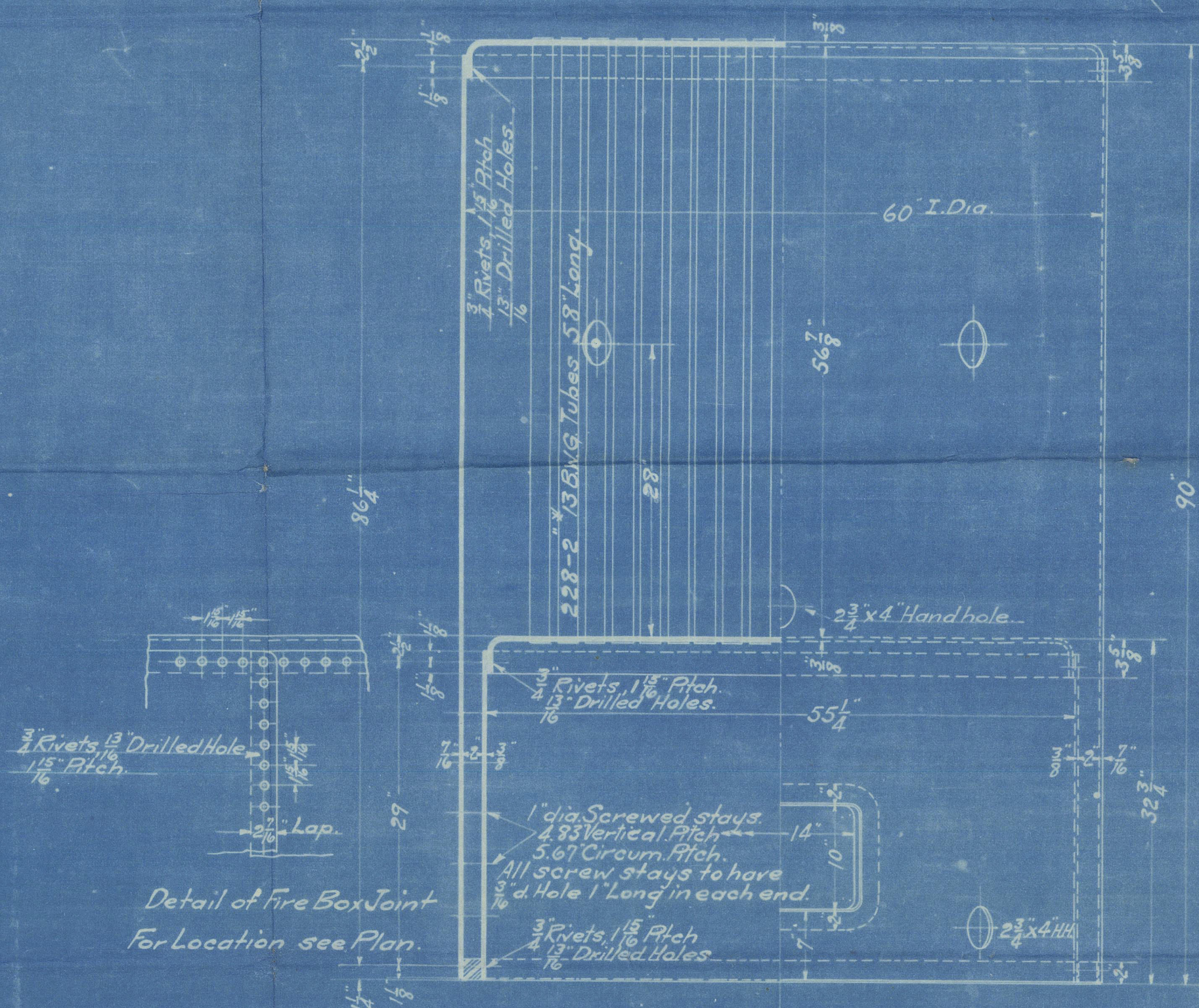
Tube Sheet Chamfered.



Section showing
tube expanded
and belled.

Section showing finished
tube, expanded, belled
and beaded.

Sections to show Method
of fastening Tube in Tube Sheet.



Detail of Fire Box Joint
For Location see Plan.

Lloyd's Inspection.

Strength of Plate between Rivet
Holes as compared with Solid Plate $= \frac{2.75 - .8125}{2.75} = 70.4\%$

Shearing Strength of Rivets
compared with Solid Plate $= \frac{2 \times .5185 \times .85}{2.75 \times .4375} = 73.3\%$

Allowable Working Press. Shell $= \frac{19.6 (7-2) \times 70.4}{60.4375} = 114\%$

Allowable Working Press. Stays $= \frac{90 \times 36}{5.67 \times 5.67} = 101\%$

U.S. Inspection.

Strength of Plate between Rivet
Holes as compared with Solid Plate $= \frac{2.75 - .8125}{2.75} = 70.4\%$

Shearing Strength of Rivets
compared with Solid Plate $= \frac{2 \times .5185 \times 49300}{2.75 \times .4375 \times 60000} = 70.8\%$

Allowable Working Pressure $= \frac{60000 \times .4375 \times 1.20}{6 \times 30} = 175\%$ Shell.

Allowable Working Pressure $= \frac{C \times T^2}{P^2} = \frac{112 \times 36}{5.675^2} = 125\%$ Stays.

Boiler #1590

60"x90" Vertical Boiler

Hull #27, Savannah Eng+Const. Co. Savannah, Ga.

Owners, Celtic Transportation Company.

Steam Pressure 100 lbs.

Tensile Strength of Plate 60,000 lbs.

Grate Surface 16.5 sq

Heating Surface 412 sq

Calorimeter 4.10 sq

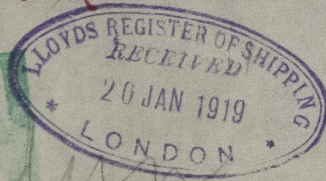
Bath Iron Works Ltd.

Scale 1"=1 foot

Bath, Me.
Feb, 1st 1917.

DONKEY BOILER.

SAVANNAH ENG. & CONSTRUCTION CO'S. HULL 127



RETAILED

No. 3.
W796-0016



© 2021

Lloyd's Register
Foundation

Boston Surveyors

W796-0016



© 2021

Lloyd's Register
Foundation