

MIDSHIP SECTION

STEEL SCREW TRAWLERS.

N^{os} 414 & 415.

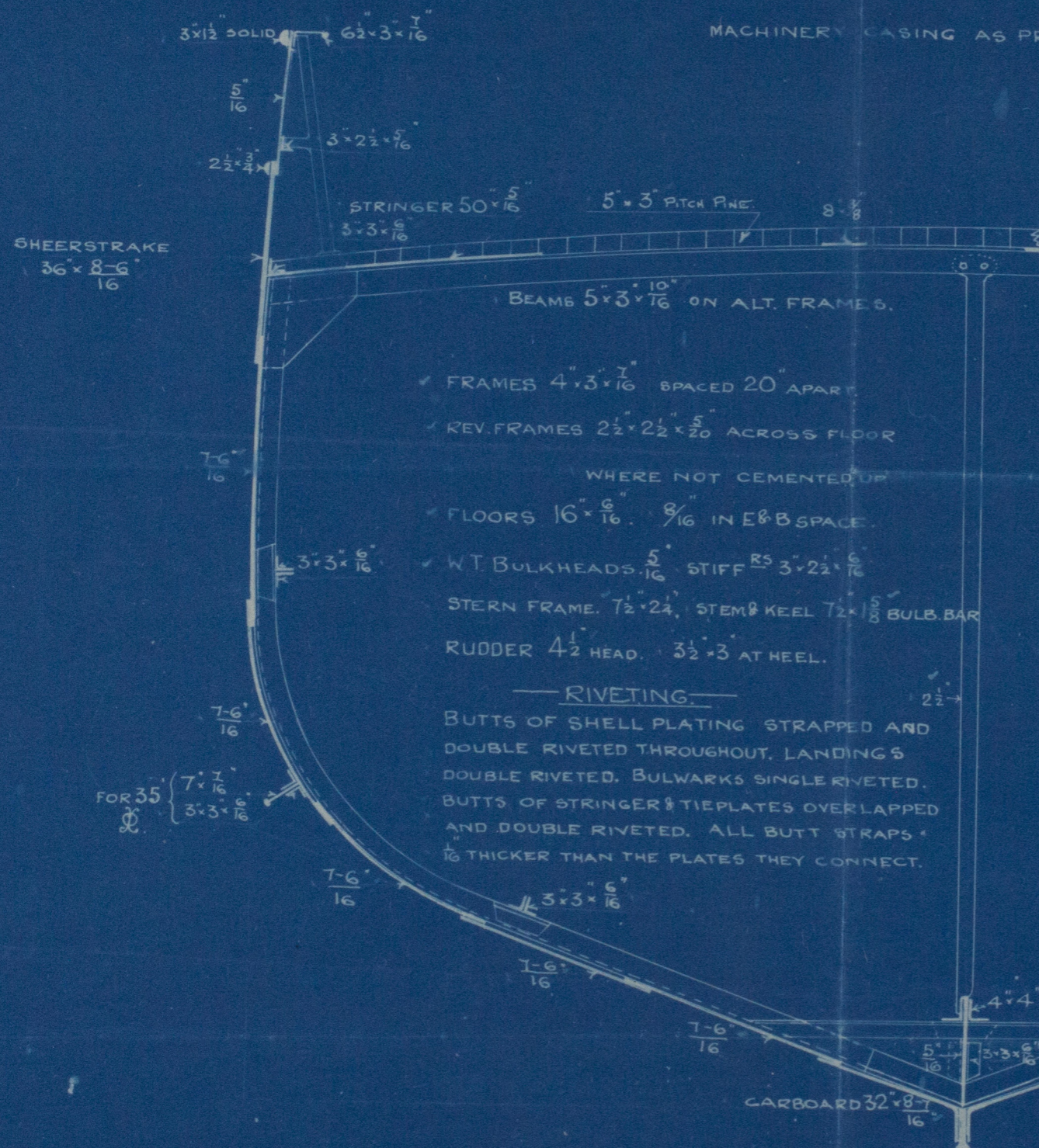
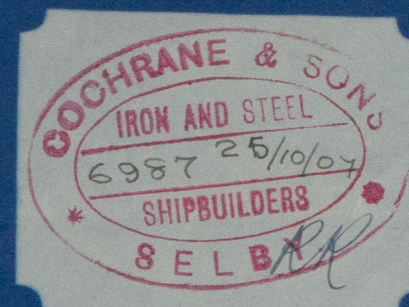
LENGTH 115'-0" 21'-6" EX × 12'-3" MOULDED.

SCALE, $\frac{1}{2}$ " = 1 FOOT.

TO CLASS 100A1 STEAM TRAWLER.

DECK PLATED OVER IN WAY OF MACHINERY SPACE.

MACHINERY CASING AS PREVIOUSLY APPROVED.



NUMERALS.

$$\frac{1}{2} B = 10.70'$$

$$\frac{1}{2} C = 18.83' \quad \frac{L}{B} = 5.31'$$

$$D = 12.68' \quad \frac{L}{D} = 8.97'$$

$$1^{st} N^o = 42.21'$$

$$113.75'$$

$$2^{nd} N^o = 48.01'$$

EQUIPMENT.

1 BOWER ANCHOR 5 CWT. EX STOCK OR 6 1/4 CWT. STOCKLESS.

1 " " 4 1/2 " " "

1 " " 2 1/2 " " "

90 FATHOMS 1" CHAIN CABLE.

60 " 5 1/2" HAWSER

60 " 4" WARP.

12.4.07



Lloyd's Register
100-0111

Cochran & Sons
Nos 414 & 415

Duplicate
Midship Section.

s/s 'Rose'
Hull Report No. 19587



RETAIN



© 2020

Lloyd's Register
Foundation

W790-0122