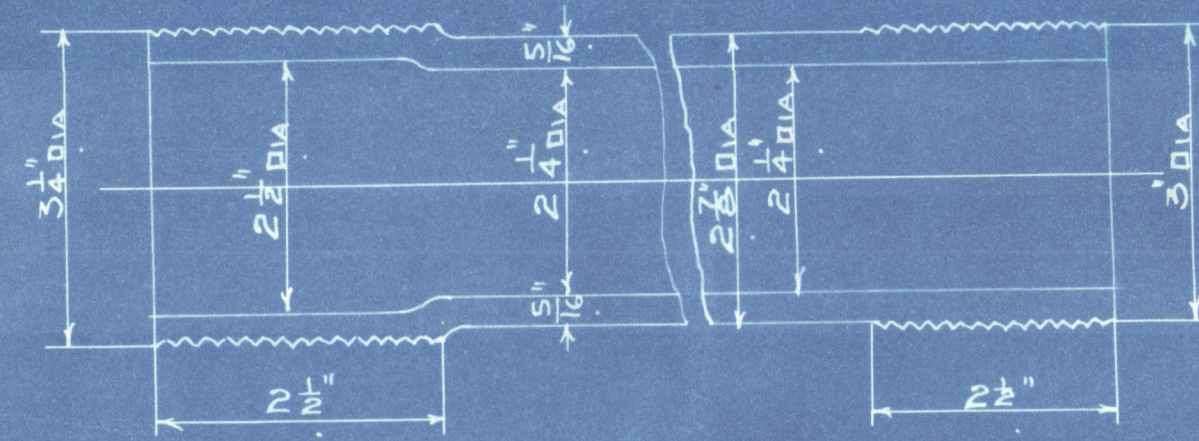
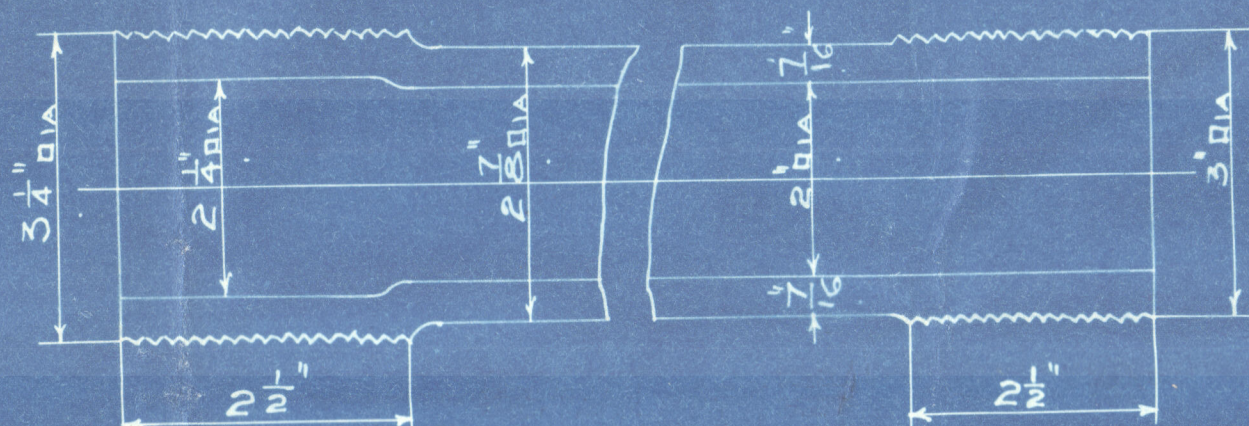


5625

J.M.H. 3/1/01.  
Q.R. 2/16/01.



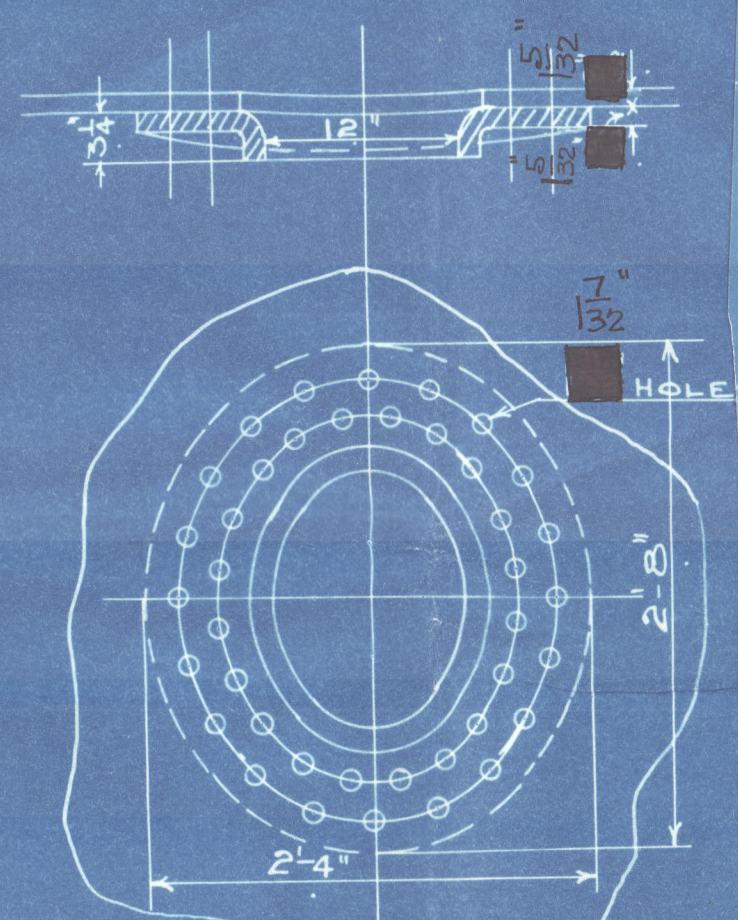
IRON STAY TUBES MARKED S.S. 9 THREADS PER INCH



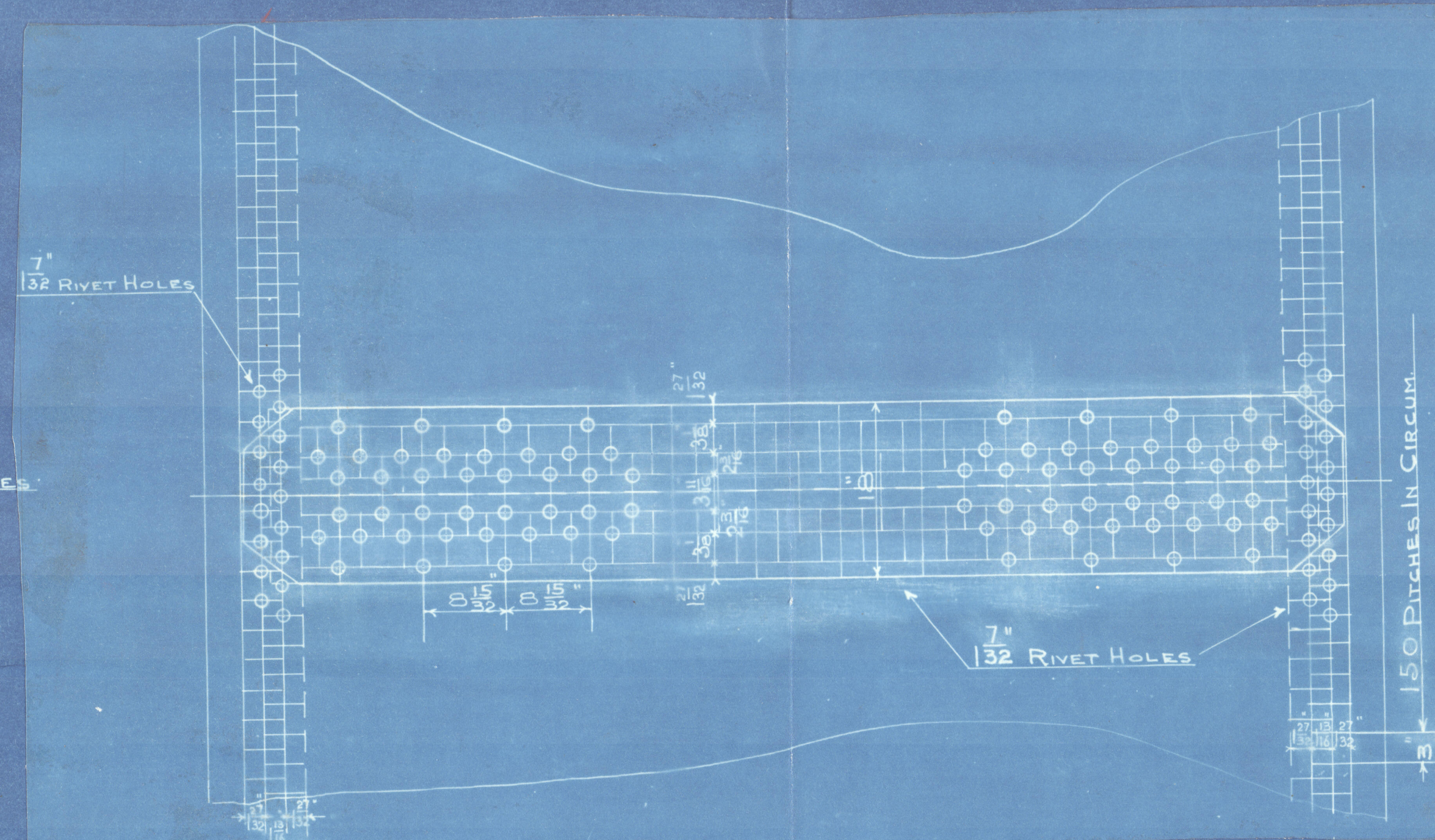
IRON STAY TUBES MARKED S.S. 9 THREADS PER INCH

STEAM SPACE STAYS

3\"/>



M<sup>c</sup> NEILS DOOR AND RING DOOR 16\"/>

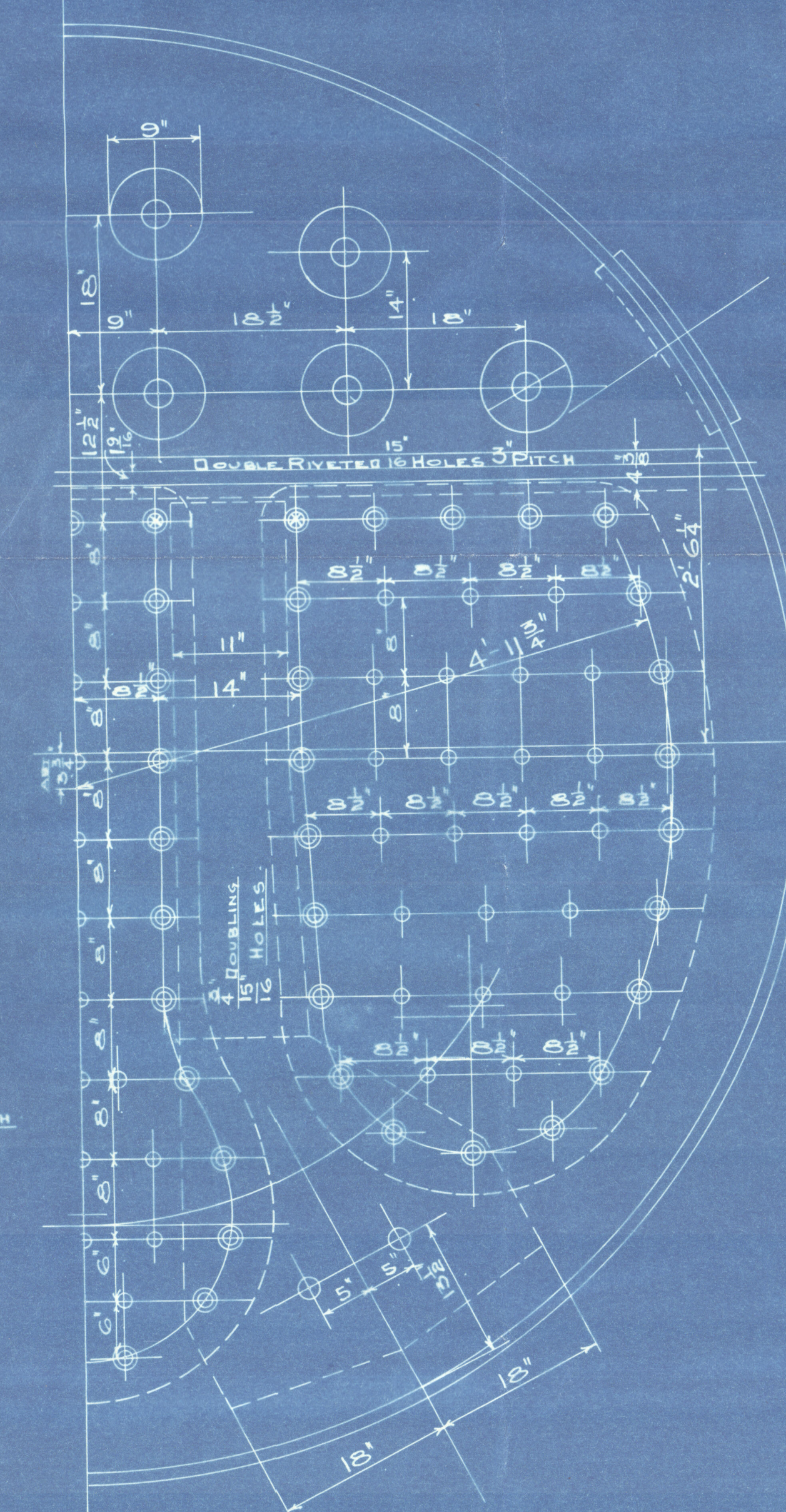


LONGITUDINAL JOINT  
PLATE 1/2\"/>

END CIRCUM JOINT  
PLATE 1/2\"/>

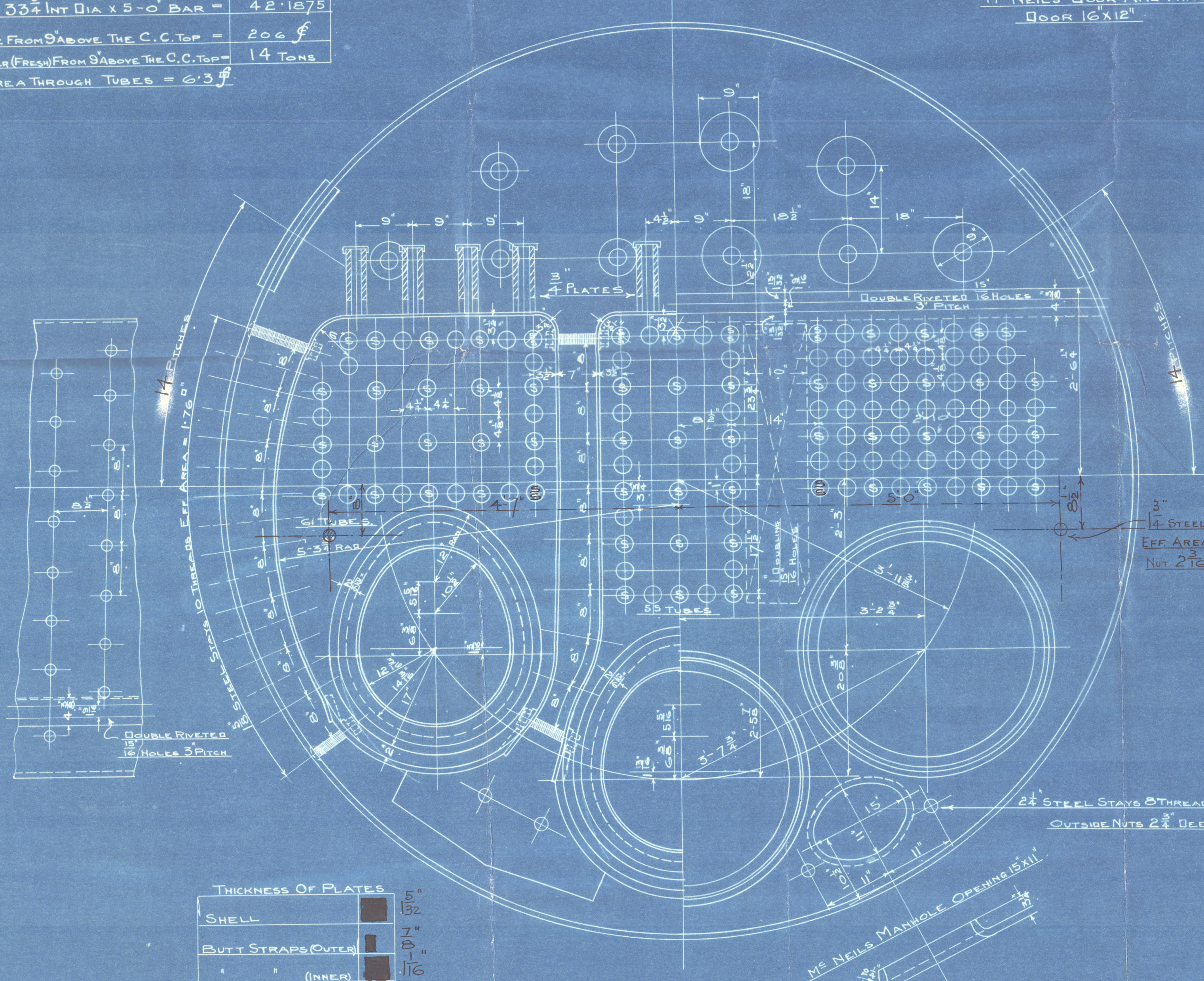
NOTE. TENSILE STRENGTH OF SHELL PLATES 28 TO 32 TONS

ALL RIVET HOLES DRILLED IN PLACE



FIREBOX STAYS  
STAYS MARKED 1/2\"/>

HEATING SURFACE		4
177 TUBES 3' EXT DIA X 6'-10" LONG =	950.0	
3 FURNACES 36 1/2" MEAN DIA 6'-10" LONG	107.5	
BACK OF FIREBOXES =	40.0	
TOP & SIDES OF ' ' =	85.0	
BACK TUBE PLATES =	28.0	
FRONT ' ' ' ' =	20.5	
TOTAL HEATING SURFACE =	1231.0	
H.S. = 29.18	T.S. = 22.51	
G.S.	G.S.	
GRATE SURFACE:		5
3 FURNACES 33 1/2" INT DIA X 5'-0" BAR =	42.1875	
STEAM SPACE FROM 9" ABOVE THE C.C. TOP =	206	f
WEIGHT OF WATER (FRESH) FROM 9" ABOVE THE C.C. TOP =	14	TONS
WRAUGHT AREA THROUGH TUBES = 6' 3"		f



THICKNESS OF PLATES	
SHELL	5\"/>
BUTT STRAPS (OUTER)	7\"/>
(INNER)	1 1/16\"/>
TOP FRONT & BACK	1 1/32\"/>
BOTTOM FRONT	1\"/>
DOUBLING	1\"/>
BACK	3\"/>
DOUBLING	4\"/>
BACK TUBE PLATES	1 1/16\"/>
FIREBOX BACKS	1 1/8\"/>
TOP & SIDES	1\"/>
BOTTOM	1\"/>
FURNACES	7\"/>
GIRDERS	4\"/>
WASHERS	1\"/>

PASSED BOARD OF TRADE  
LLOYDS

## DIKY BOILER

12'-0\"/>

TO PASS BOARD OF TRADE & LLOYDS SURVEYS - ALL MATERIAL STEEL

EXCEPT TUBES WHICH ARE IRON

SCALE 1\"/>

No. 182





© 2020  
For Enclosure to

*Alfred*  
Lloyd's Register

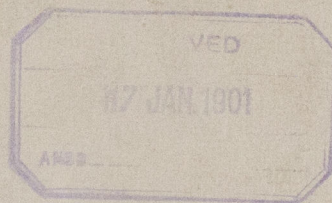
*W790-0105(112)*



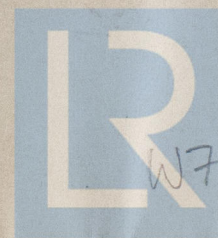
Belfast  
Wetherman Clarke & Co. L.S.S. 182  
Auxiliary Mailer  
L.S.S. "Llewellyn" Gray



Bel 5387.



RETAIN



© 2020

W790-0905 (2/2)  
Lloyd's Register  
Foundation