

5518
Sh. W. 10/11/00

Mr. 101
8.1.01

HEATING SURFACE	SQ FEET
373 TUBES 2 1/2" EXT DIA X 7'-10" LONG	1911.3
3 FURNACES 44" MEAN DIA X 7'-10" "	148.0
TOP AND SIDES OF COMB. CHAMBER	124.0
BACKS " " " "	59.0
BACK TUBE PLATES	42.0
FRONT " " " "	30.0
TOTAL HEATING SURFACE	2314.3

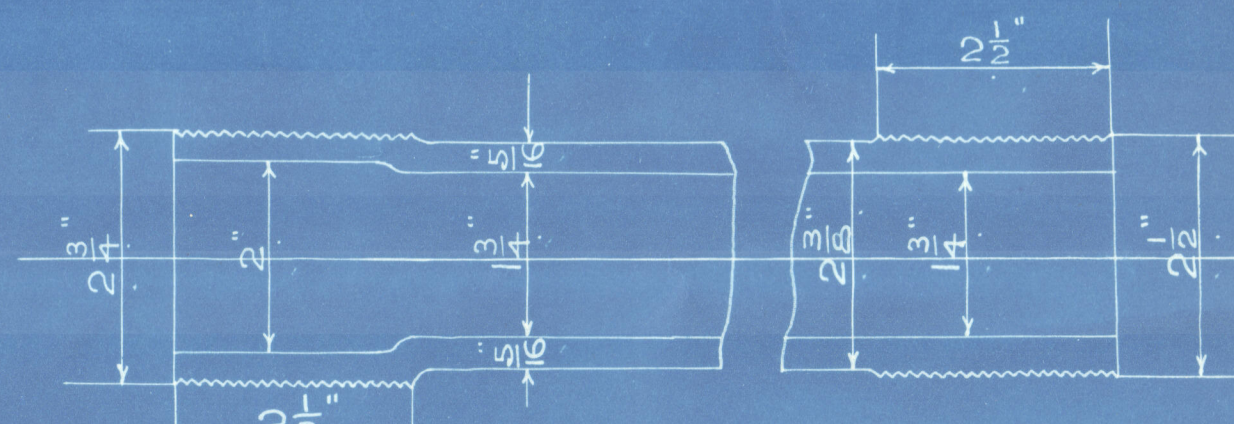
GRATE SURFACE	SQ FEET
3 FURNACES 42" INT DIA X 5'-6" BAR	57.7

H.S. = 40.1
G.S. = 33.12

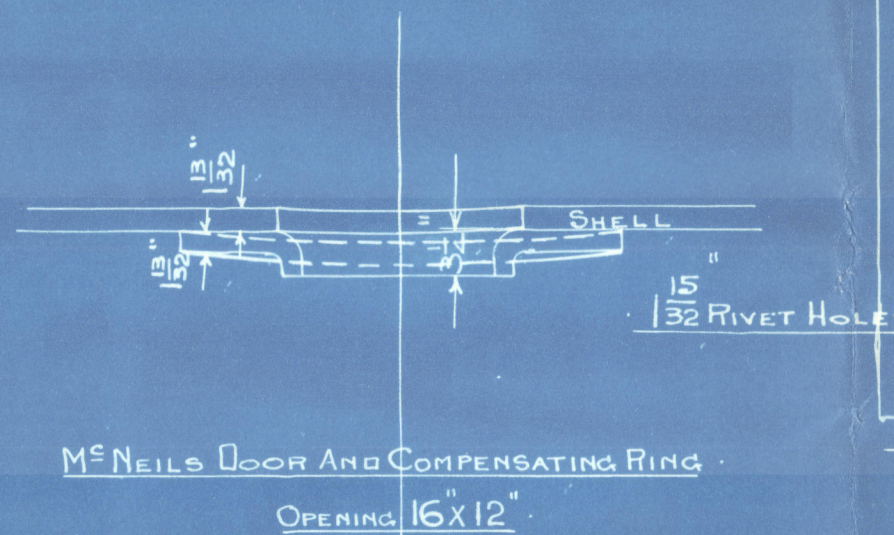
TOTAL HEATING SURFACE IN FOUR BOILERS = 9257.2
" GRATE " " " = 230.8

STEAM SPACE STAYS
STAYS MARKED \odot 3/4" DIA 6 THREADS EFF AREA = 7239.0
" " " " " " " " = 5557.0

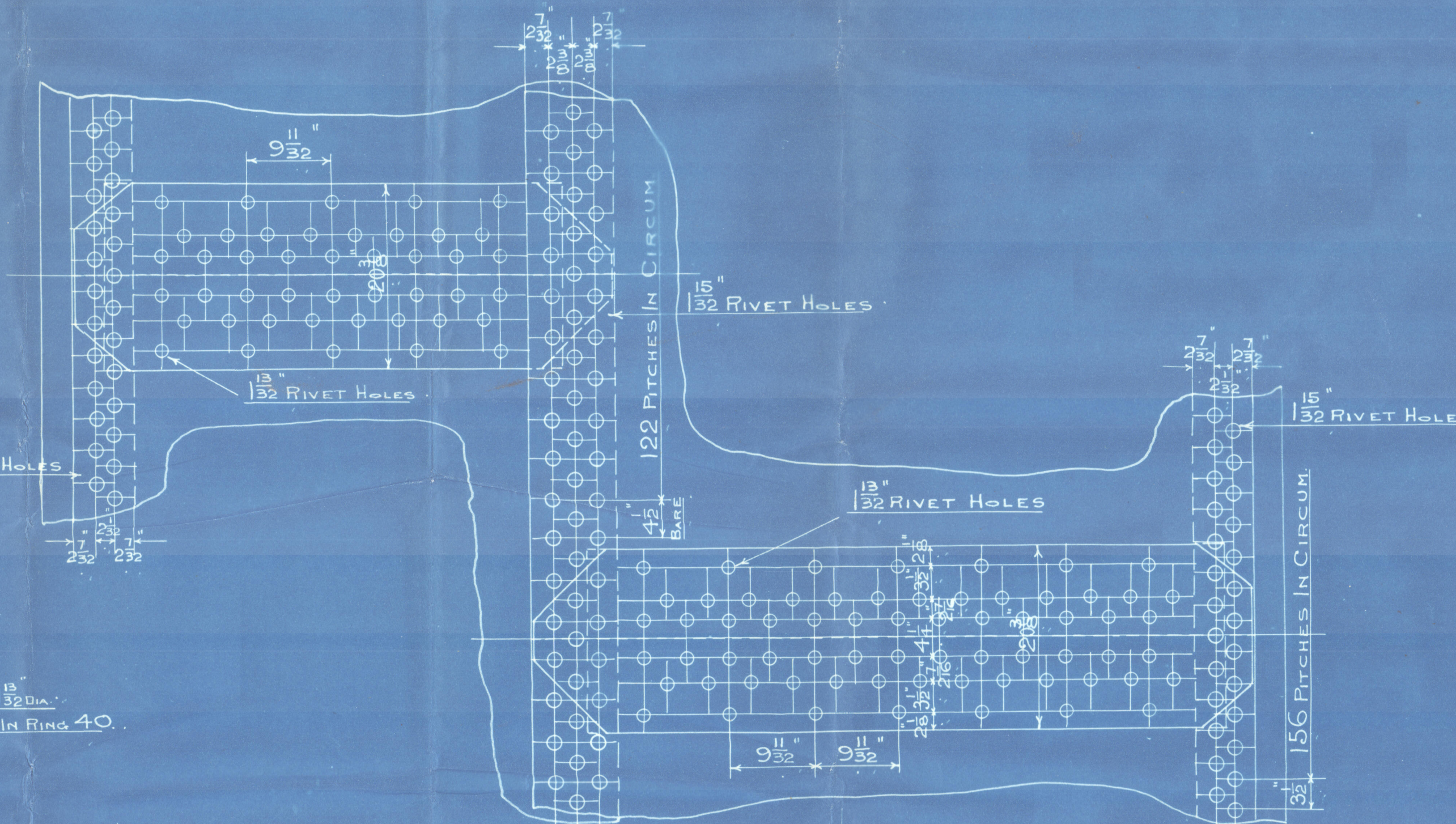
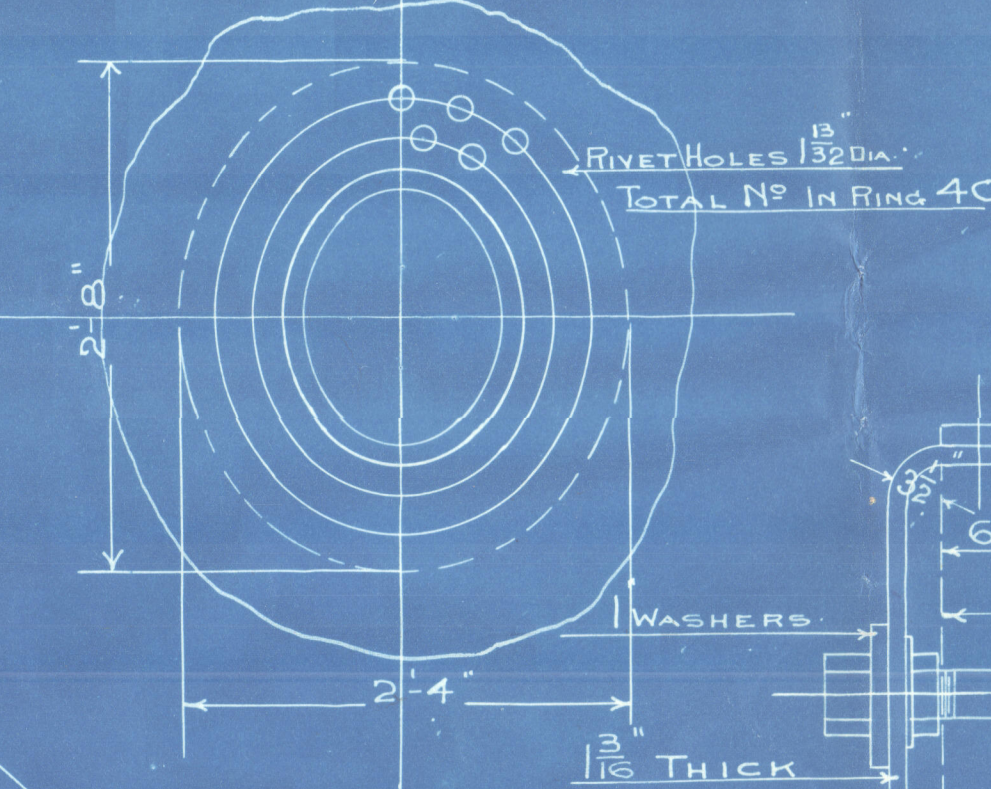
STEAM SPACE FROM 9" ABOVE COMB. CHAMBER = 395.5 cu ft
WEIGHT OF WATER (FRESH) " " = 23 TONS
DRAUGHT AREA THROUGH THE TUBES = 8.6 sq ft



IRON STAY TUBES MARKED S 9 THREADS PER INCH



M. NEILS DOOR AND COMPENSATING RING
OPENING 16 X 12



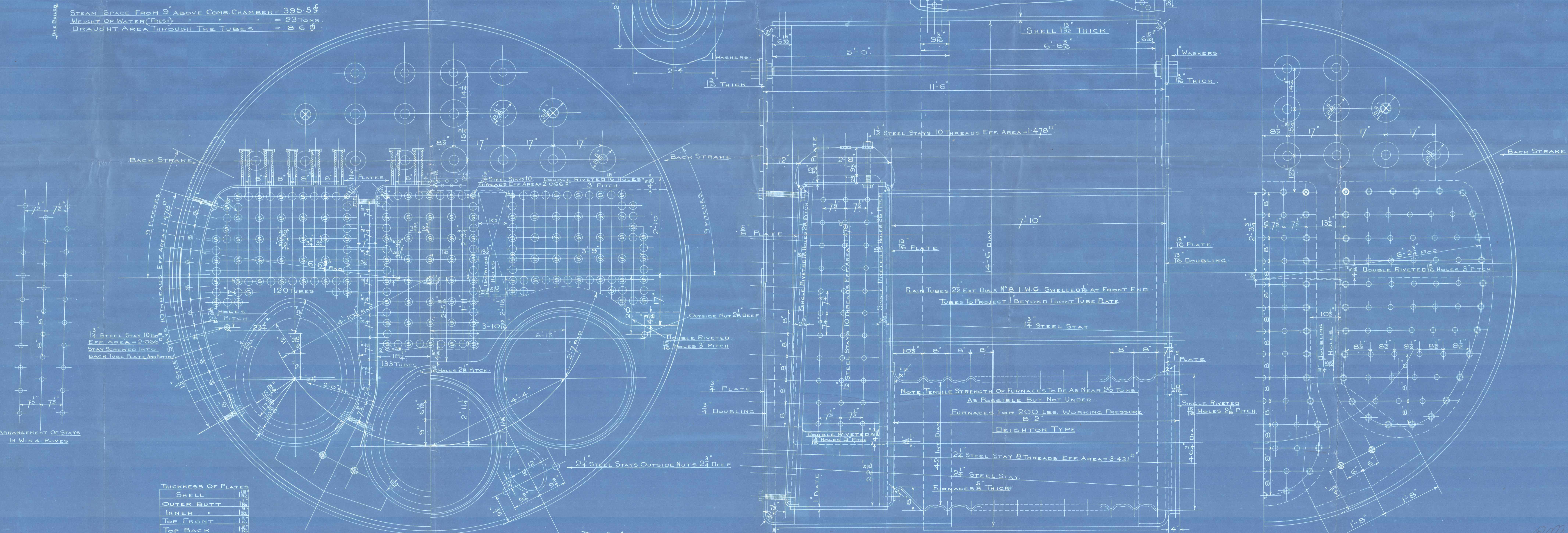
LONGITUDINAL JOINT
PLATE 1 1/2" RIVET HOLES 1 1/2" PITCH 9 1/2" OUTER BUTT STRAP 1 1/2" THICK INNER 1 1/2" THICK
PERCENTAGE OF PLATE 84.95 RIVETS B OF T. 84.99 LLOYDS 87.95
FACTOR OF SAFETY 4.5 PRESSURE BY RULE B OF T. 1914 LLOYDS 217.9 LBS

CENTRE CIRCUMFERENTIAL JOINT
PLATE 1 1/2" RIVET HOLES 1 1/2" PITCH 4 1/2" BARE
PERCENTAGE OF PLATE 67.36 RIVETS B OF T. 66.01 LLOYDS 68.3

END CIRCUMFERENTIAL JOINTS
PLATE 1 1/2" RIVET HOLES 1 1/2" PITCH 3 1/2"
PERCENTAGE OF PLATE 58.03 RIVETS B OF T. 56.58 LLOYDS 58.54

NOTE TENSILE STRENGTH OF SHELL PLATE 28 TO 32 TONS
" " " " OTHER PLATES 26 TO 30 "

ALL RIVET HOLES DRILLED IN PLACE



THICKNESS OF PLATES	
SHELL	1 1/2"
OUTER BUTT	1 1/2"
INNER " "	1 1/2"
TOP FRONT	1 1/2"
TOP BACK	1 1/2"
FRONT TUBE PLATE	1 1/2"
BACK " "	1 1/2"
BOTTOM BACK	1 1/2"
COMB. CHAMBER " "	1 1/2"
" " BOTTOM	1 1/2"
FURNACES	1 1/2"
GIRDERS	1 1/2"
WASHERS	1 1/2"
TOP AND SIDES OF C.C.	1 1/2"
BOTTOM BACK DOUBLING	1 1/2"
FURNACE FRONT	1 1/2"
FRONT TUBE PLATE DOUBLING	1 1/2"

M. NEILS MARKER 16 X 12

PASSED BY BOARD OF TRADE
" " " LLOYDS

MAIN BOILERS 4. OFF

14'-6" DIA X 11'-6" LONG X 190 LBS WORKING PRESSURE
TO PASS BOARD OF TRADE AND LLOYDS SURVEYS
ALL MATERIAL STEEL EXCEPT TUBES WHICH ARE IRON

SCALE 1" = 1 FOOT

NO 182

M. NEILS
8.1.01

For Enclosure to

Lloyd's

Regist

W790-0104 (1/2)

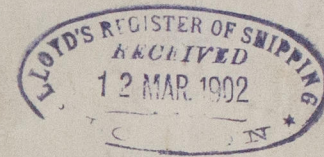
W790-0104 (2/2)

W790-0104 (1/2)



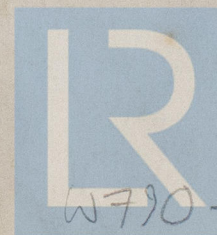
Belfast
Workman Clark & Co. 1851/82
Main Sailed

H. B. Pease & Co. 1851/82
8 JAN. 1901
LONDON



Bel 5387

RETAIN



© 2020

Lloyd's Register
Foundation

W790-0104 (2/2)