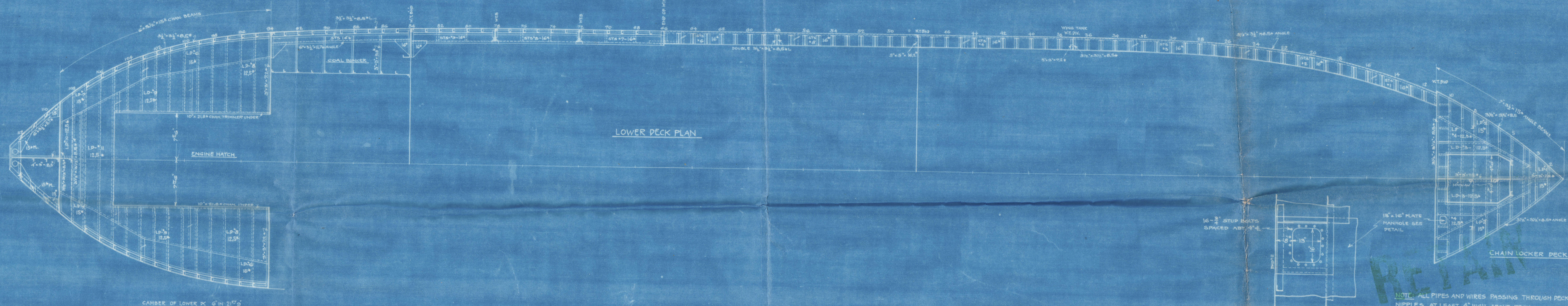
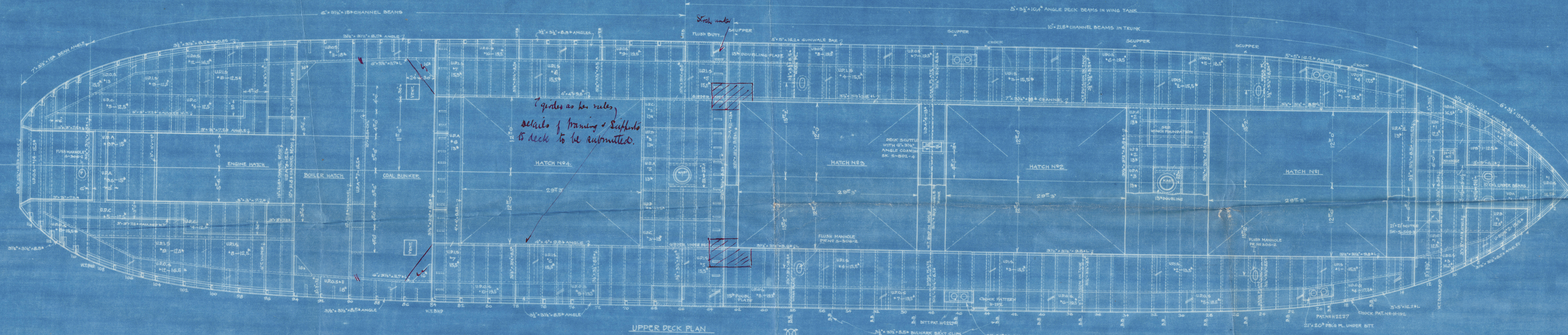
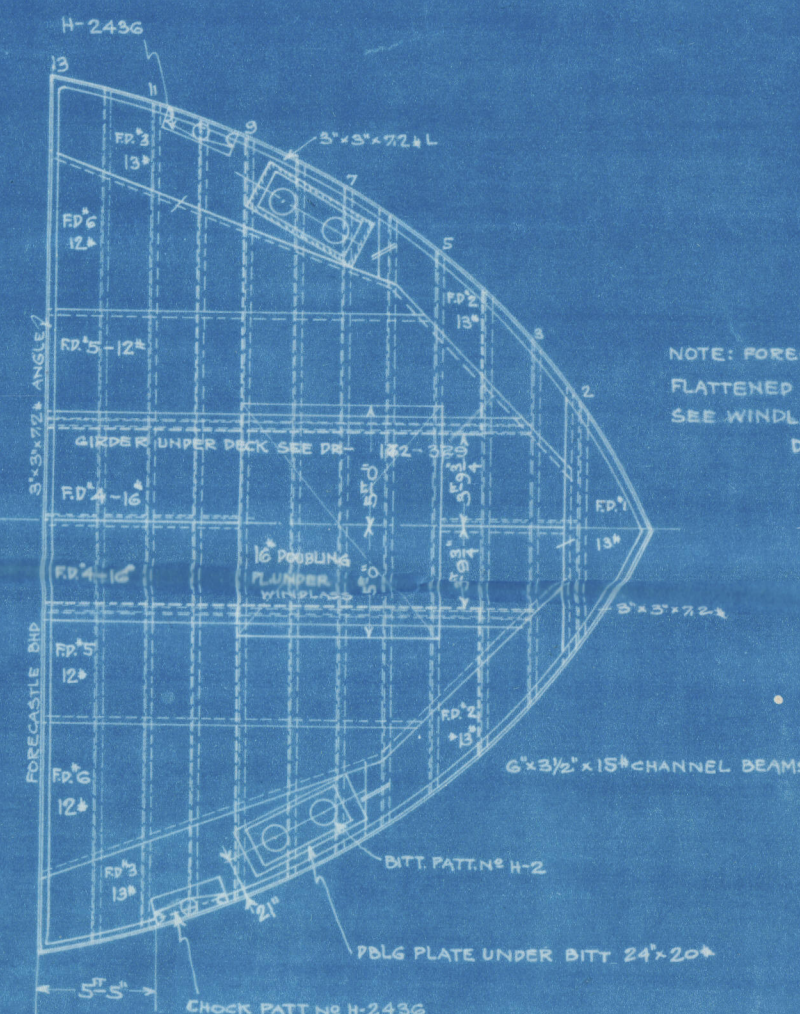


FRAME	HALF DECK WIDTH
96	16' 8"
97	16' 6"
100	16' 0 1/2"
105	15' 6"
106	14' 7 1/2"
109	13' 5"



HULL Nos 172-3-4-5
DECK PLANS

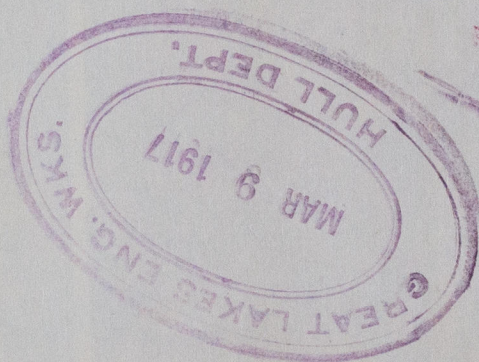
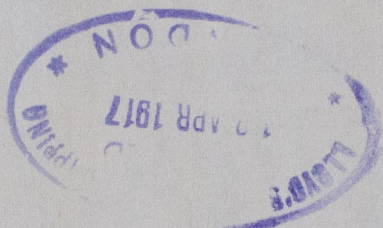
Great Lakes Engineering Works
DETROIT, MICH.

Drawn by E.P.
Checked by E.P.

Scale 1/4"=1'

APPROVED
LLOYD'S REGISTER OF SHIPPING
MAR 27 1917
NEW YORK

WAB-2028



© 2020

Lloyd's Register
Foundation