

18.5.12
6.6.12
17.6.12
3.7.12
17.7.12

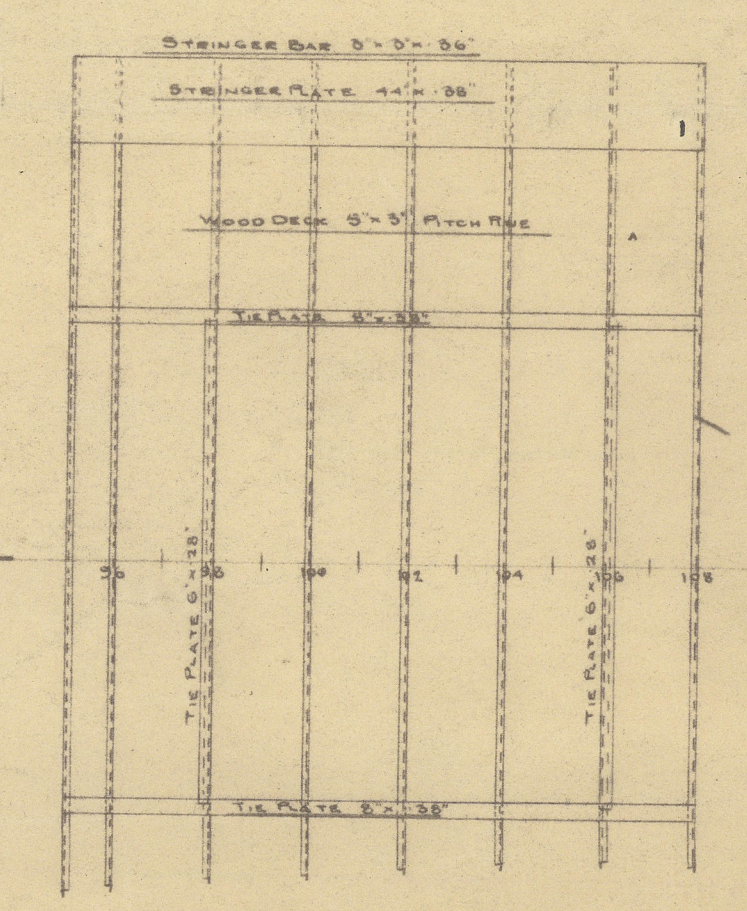
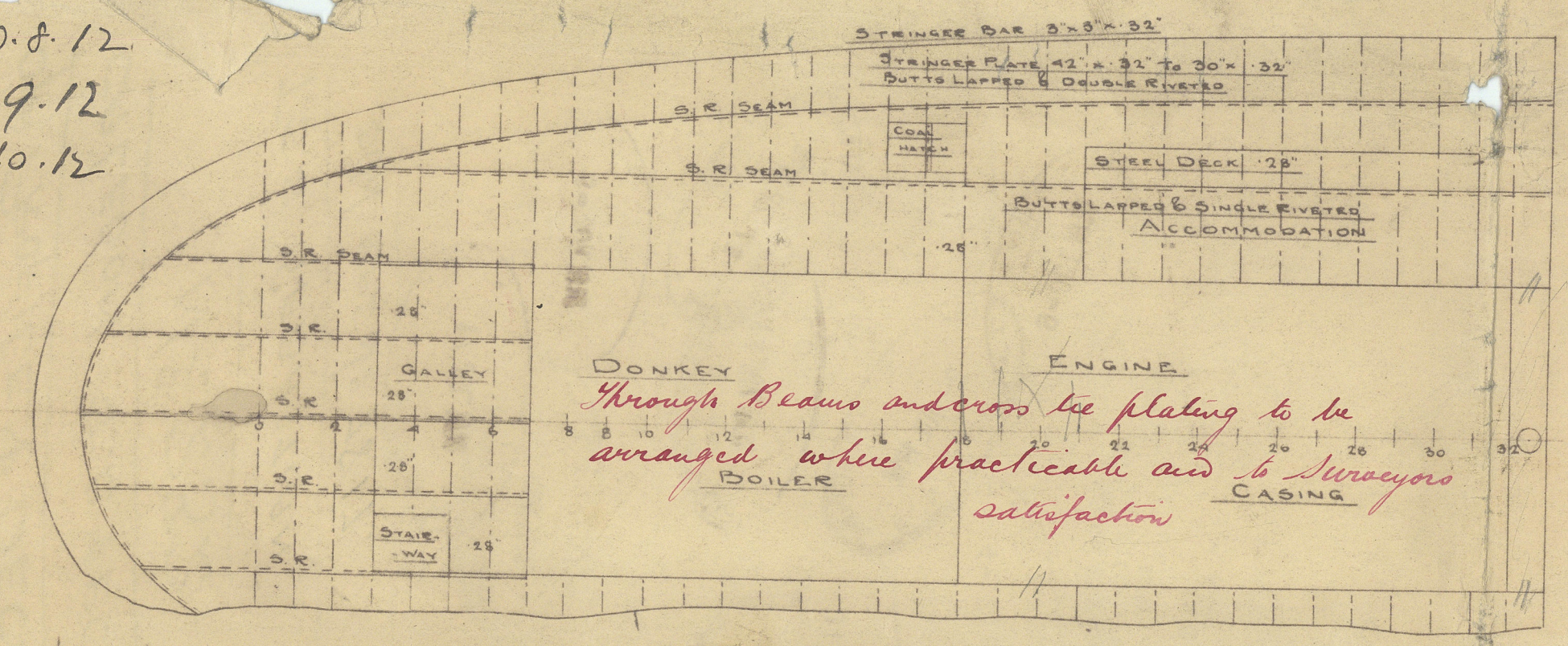
26.8.12
11.9.12
15.10.12

SHIP NO 232

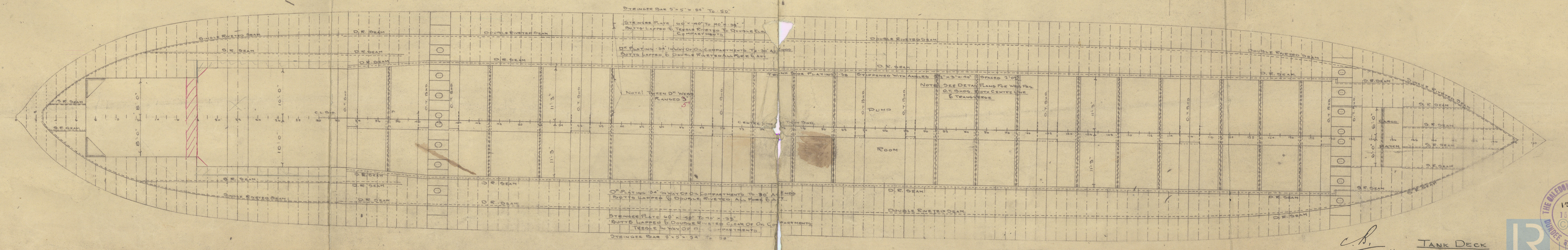
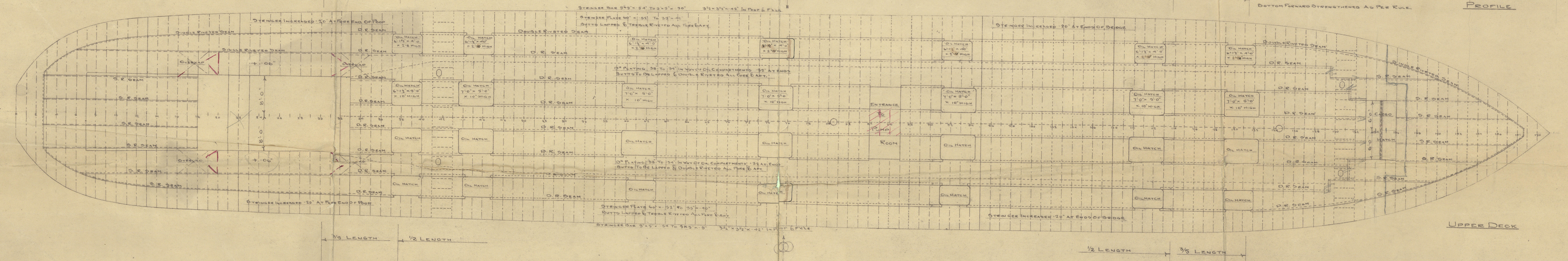
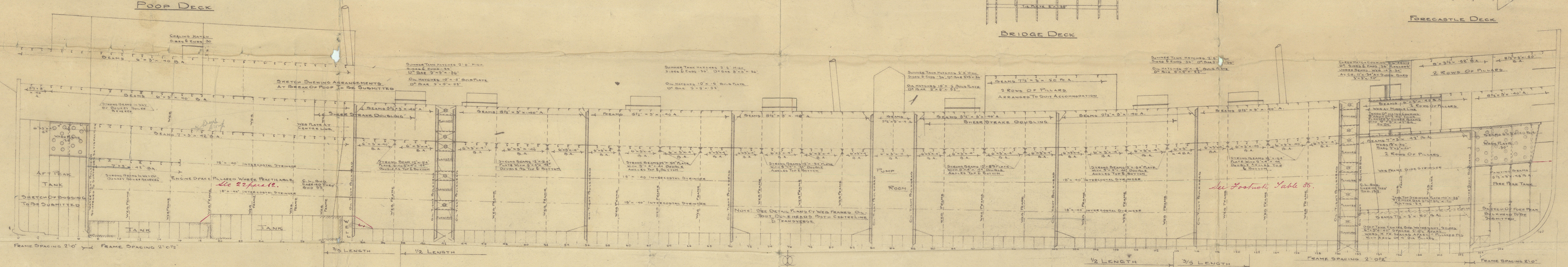
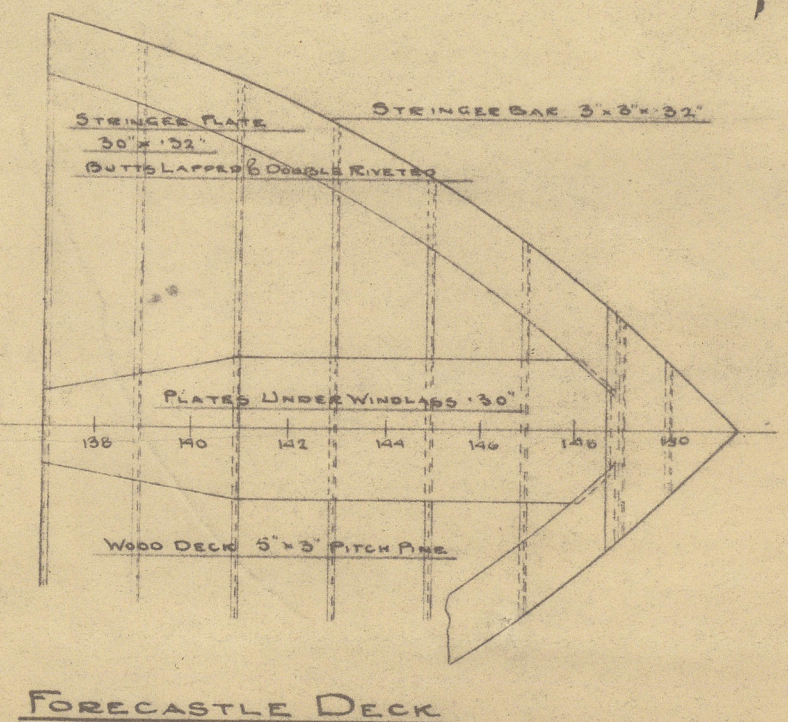
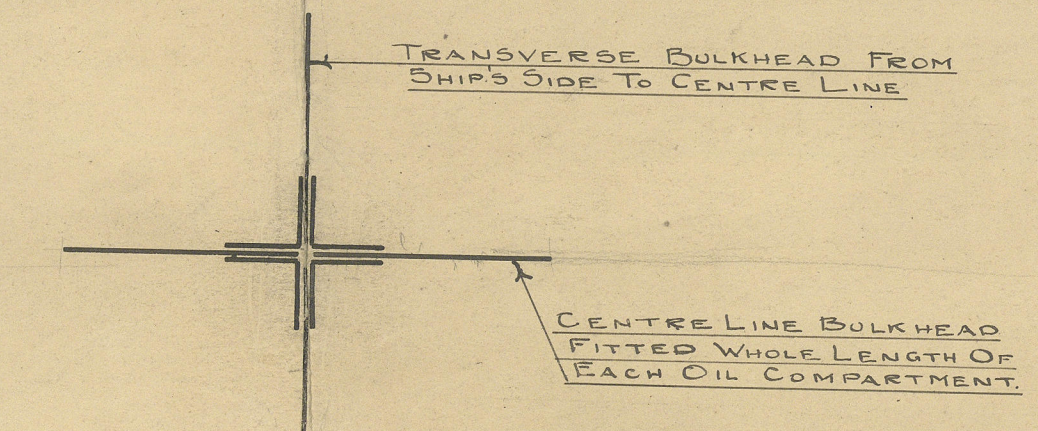
PROFILE AND DECK PLANS
OF A TWIN SCREW OIL VESSEL

DIMENSIONS 310'-0" B.P. x 45'-0" B.M.L.D. x 26'-3" D.M.L.D.

SCALE 1/8" = 1 FOOT

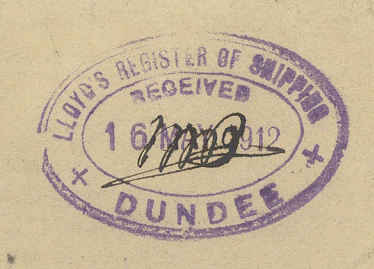


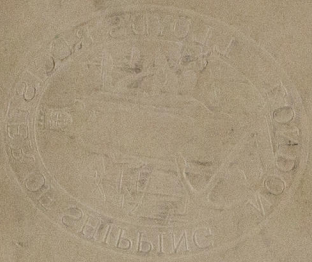
SKETCH SHOWING JUNCTION OF TRANSVERSE AND CENTRE LINE OIL TIGHT BULKHEADS - NOT TO SCALE



18.5.12

TANK DECK



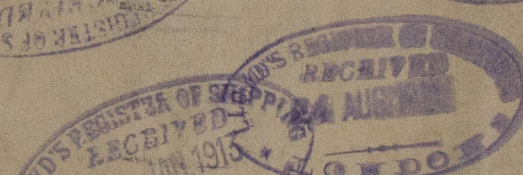
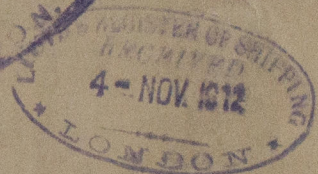
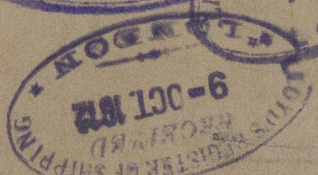
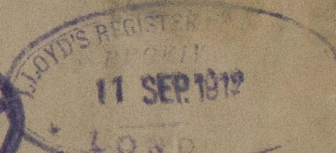
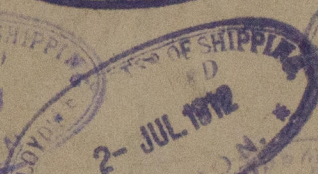
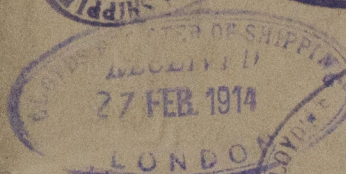
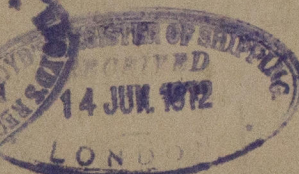
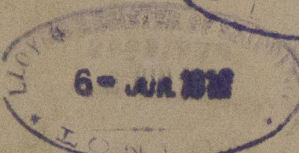
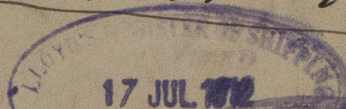


AMENDED PLAN
OF PROFILE & DECKS
CALEDON S.B. & CO. LTD

N^o 232

T.S.S. "SEBASTIAN"

DUN. R.P. N^o 7817.



RETAIN

W777 0049