

HEATING SURFACE	
TUBES	1162
FURNACES	70
CHAMBERS	153
FRONT TUBE PLATE	25
TOTAL	1410 ft ²
GRATE AREA	
ONE BOILER	36 ft ²

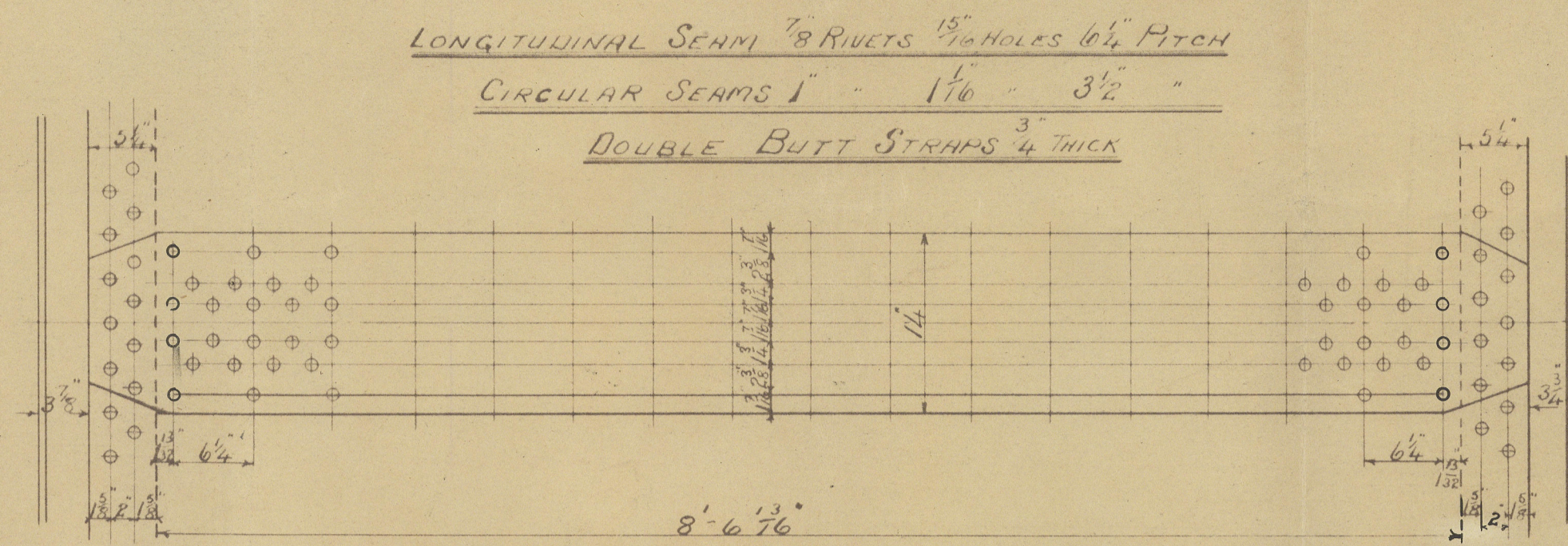
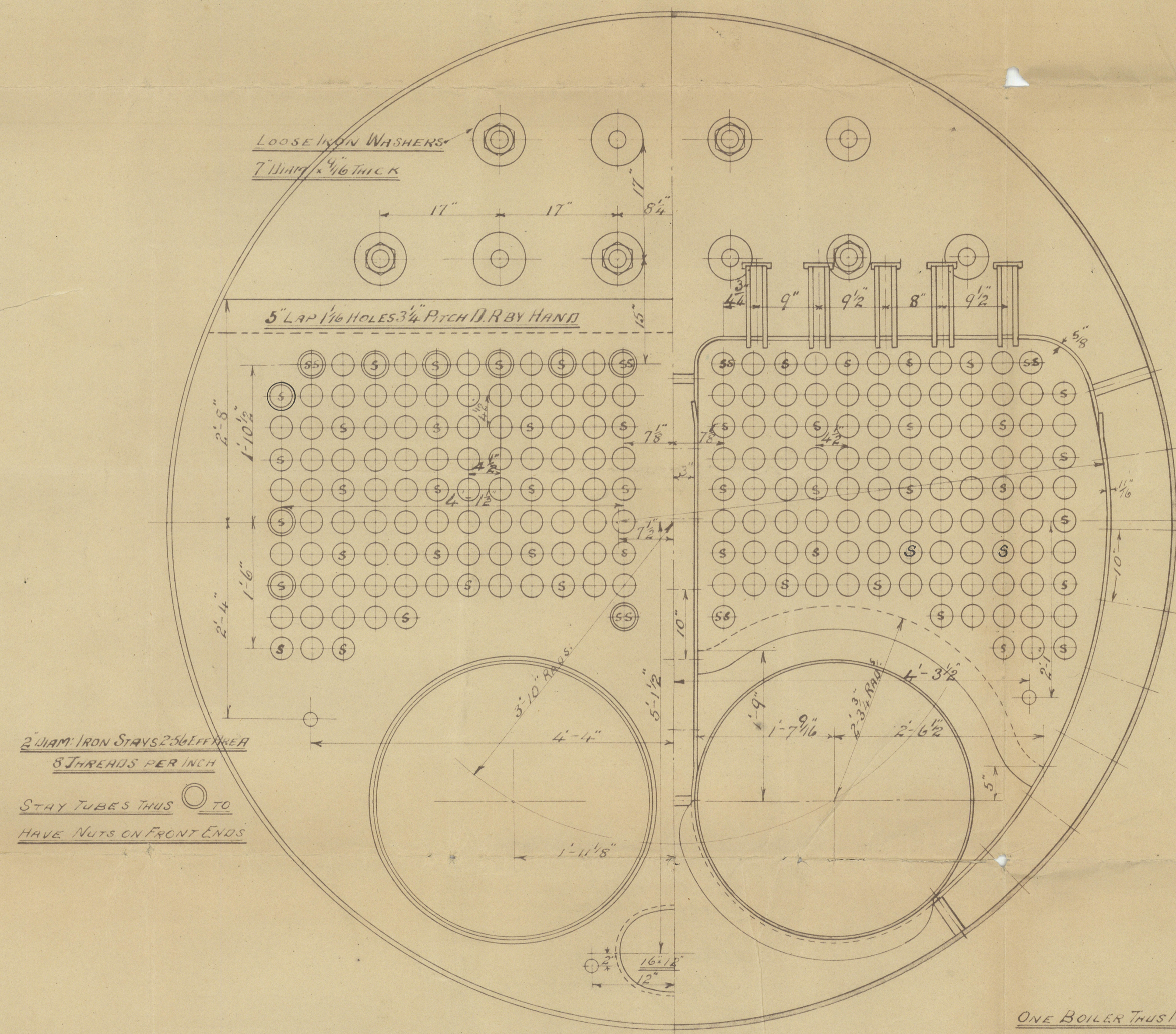
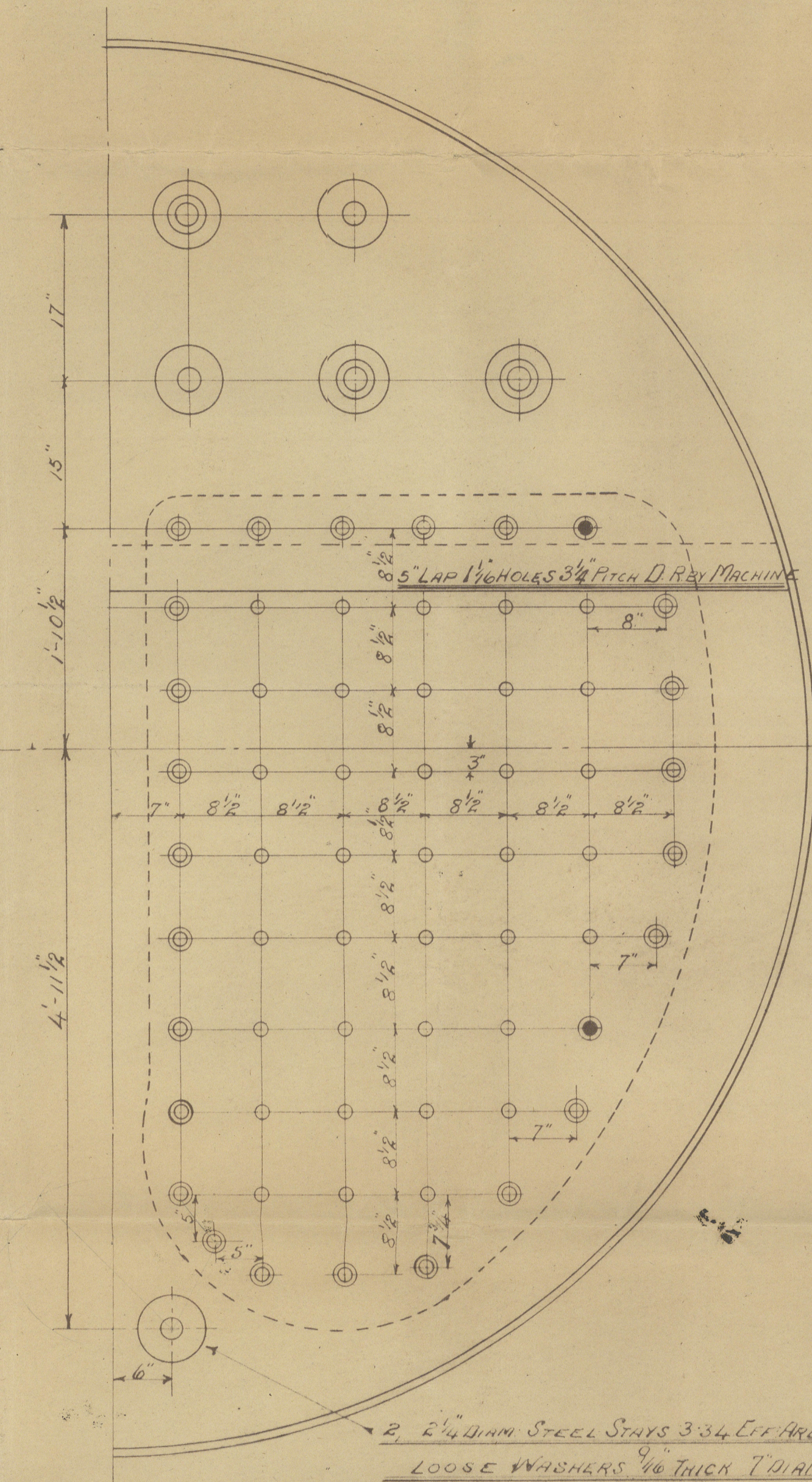
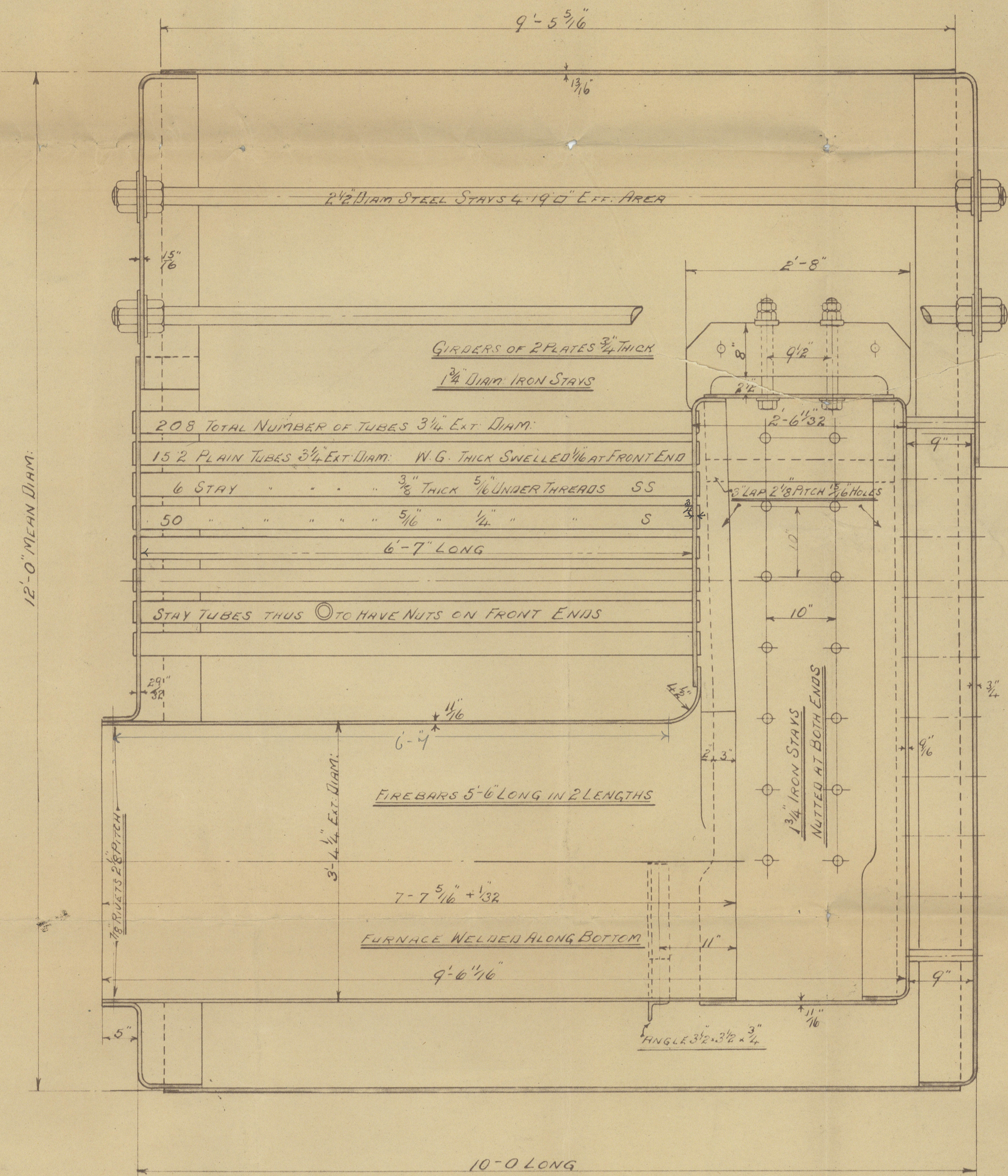


PLATE THICKNESS	3
SMELL	10
BUTTS	12
TOP OF ENDS	19
BOTT. OF FRONT	23
BOTT. OF BACK	3
BACK TUBE PLATES	3
FURNACES	14
GIRDERS	3
CHIMNEY TOPS	4
" BACKS	5
SIDES & BOTTOMS	10
	16



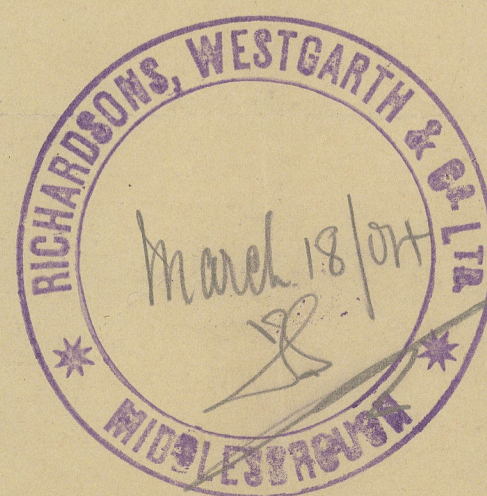
ONE BOILER THUS N^o 282



STAYS IN CHIMNEY BACKS

1 ³ / _{4"} IRON STAYS	2-07 EFF AREA NOTTED IN CHIMBENS ONLY
1 ³ / _{8"} STEEL " "	" " NOTTED AT BOTH ENDS
1 ⁷ / _{8"} STEEL " "	P. 46 " " " "

TO PASS LLOYDS SURVEY FOR 140 LBS WORK PRESSURE
TENSILE STRENGTH OF SHELL PLATES AND BUTT STRAPS 24 TO 32 TONS
DO OF LONGITUDINAL STAYS 27 TO 32 TONS
DO OF ALL OTHER PLATES & SKEWED STAYS 26 TO 30 TONS



BOILER N°282

FOR MESS^{RS} PILE AND CO S/S N^o 27

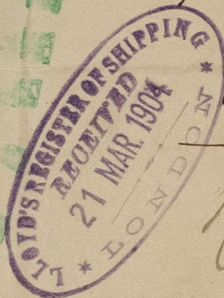
SCALE 1" = 1 FOOT



Main Boiler
Richardsons
Westgarth & Co. Ld
Eng No 282

Messrs Pile & Co
S S No 27

St. Hurricane



Mdb. Rpt. No. 3963.

Rpt. 4036

RETAIN

W774-0077



© 2021

Lloyd's Register
Foundation

Mass. Longs.
Vol 289

J. HIGGINS & CO.
PRINTERS
B.W.

4477 - 4477