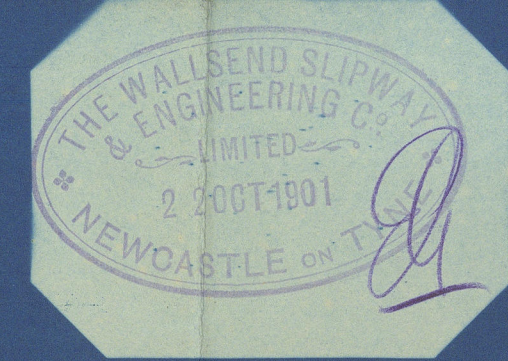


ALTERED TO BLACK

CHECKED BY
DATE
TIME CHARGED TO



BOILER CONTRACT NOS 555-7.

MESSRS SWAN & HUNTERS S.S.N. 276, SIR W. G. ARMSTRONG WHITWORTH & CO S.S.N. 723

TO BE CONSTRUCTED TO PASS LLOYDS REQUIREMENTS.

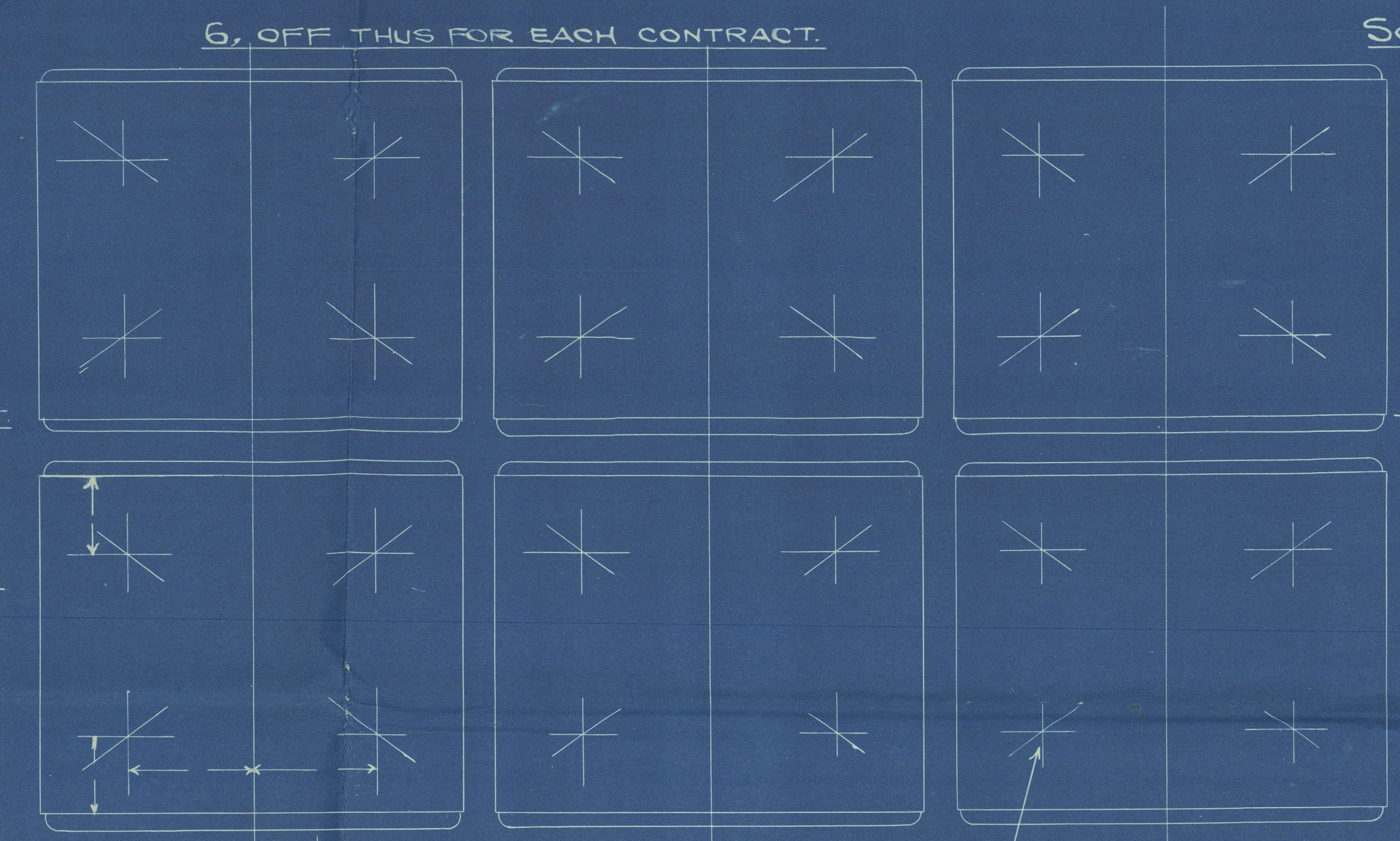
SCALE 1" = ONE FOOT.

OCT. 21ST 1901.

HEATING SURFACE	SQ. FT.
TUBES	1322
FURNACES	133
COMBUSTION CHAMBERS.	211
TUBE PLATES	68
TOTAL ONE BOILER	1734
SIX BOILERS	10404.

WORKING PRESSURE 180 LBS PER SQ. IN.
TEST " 360 " " "

PORT



STAR 42

MATERIAL MANUFACTURED BY

PLATES STEEL

RIVETS "

STAYS "

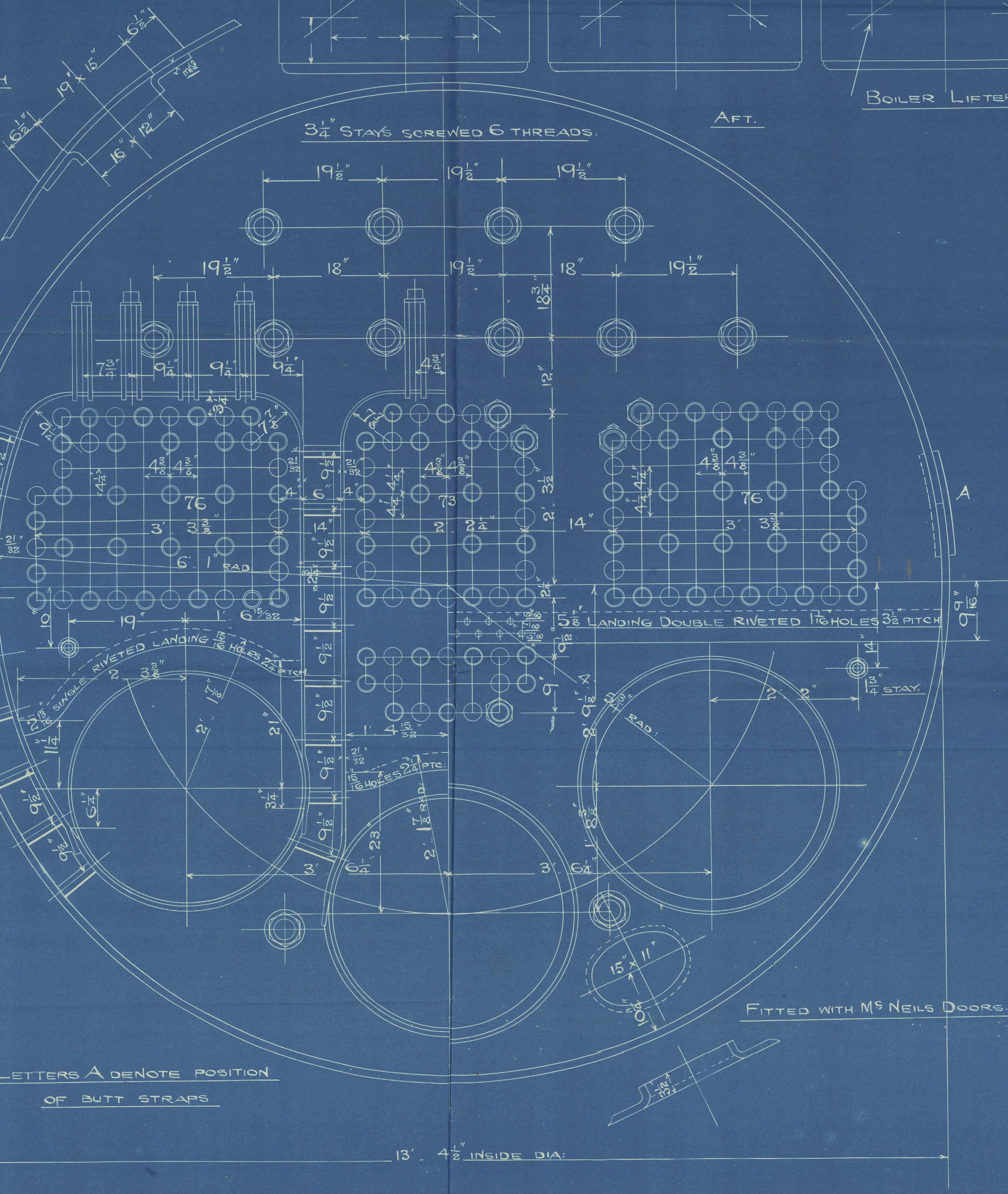
TUBES IRON

SPARE GEAR

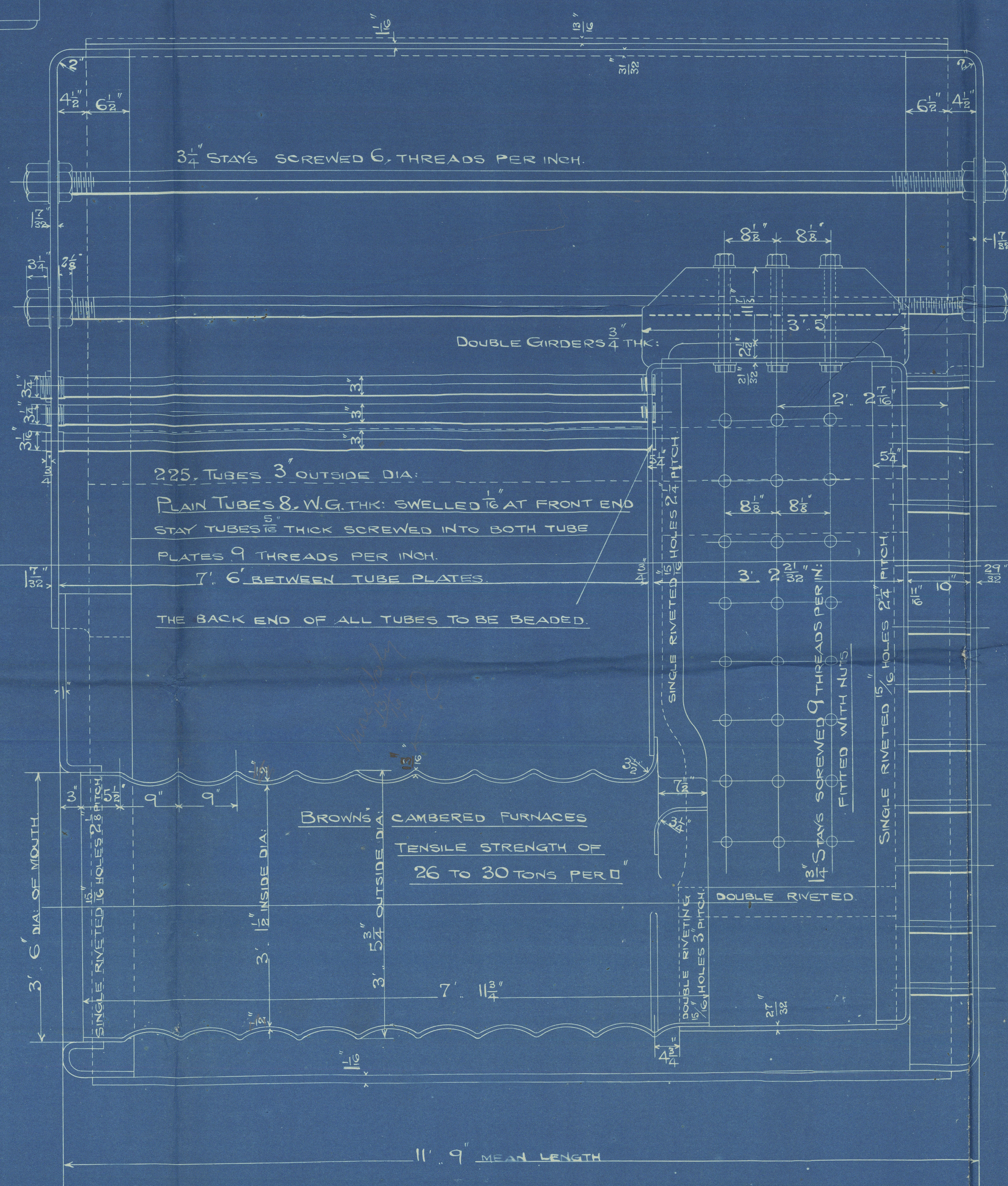
30. PLAIN TUBES.

6. STAY "

MANHOLE 16" x 12" FITTED WITH
MS NEILS DOOR & DOUBLING



LETTERS A DENOTE POSITION
OF BUTT STRAPS.



3 1/4" STAYS SCREWED 6. THREADS PER INCH.

DOUBLE GIRDERS 4 THK.

225. TUBES 3" OUTSIDE DIA.
PLAIN TUBES 8. W.G. THK. SWELLED 1/8" AT FRONT END
STAY TUBES 1/2" THICK SCREWED INTO BOTH TUBE
PLATES 9. THREADS PER INCH.
7. 6" BETWEEN TUBE PLATES
THE BACK END OF ALL TUBES TO BE BEADED.

BROWN'S CAMBERED FURNACES
TENSILE STRENGTH OF
26 TO 30 TONS PER 0"

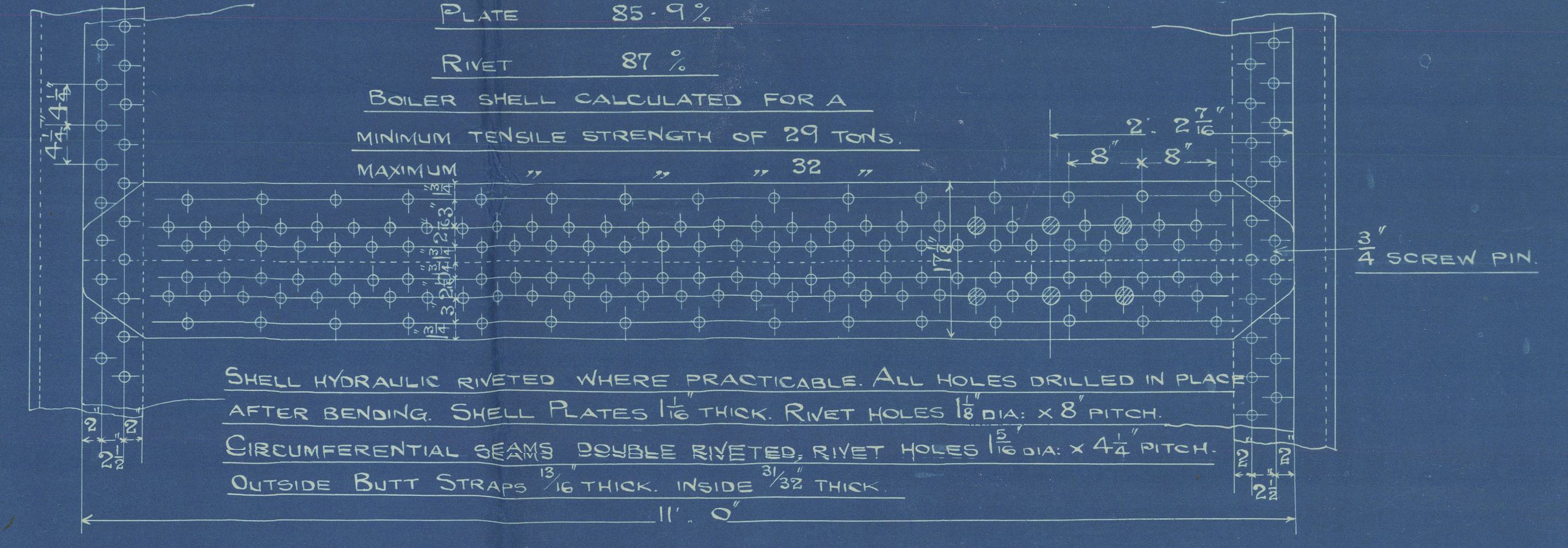
PLAN OF SHELL RIVETING.

STRENGTH OF JOINT

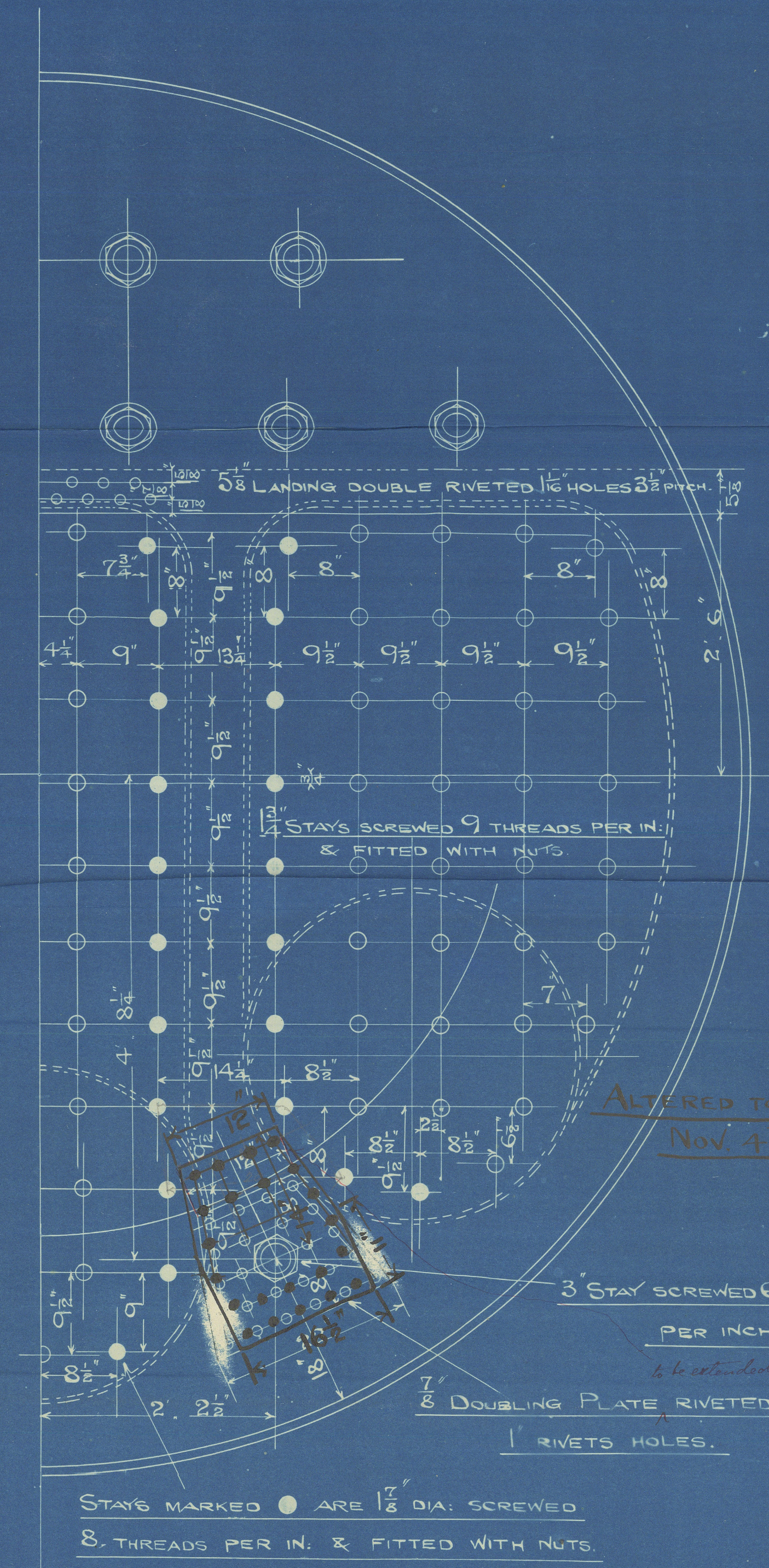
PLATE 85.9%

RIVET 87%

BOILER SHELL CALCULATED FOR A
MINIMUM TENSILE STRENGTH OF 29 TONS.



SHELL HYDRAULIC RIVETED WHERE PRACTICABLE. ALL HOLES DRILLED IN PLACE
AFTER BENDING. SHELL PLATES 1 1/8" THICK. RIVET HOLES 1 1/8" DIA. x 8" PITCH.
CIRCUMFERENTIAL BEAMS DOUBLE RIVETED, RIVET HOLES 1 1/8" DIA. x 4 1/2" PITCH.
OUTSIDE BUTT STRAPS 1/8" THICK. INSIDE 3/32" THICK.



ALTERED TO BLACK
NOV. 4TH 01

3" STAY SCREWED 6. THREADS
PER INCH.

7/8" DOUBLING PLATE RIVETED ON
1 RIVETS HOLES.

STAYS MARKED ● ARE 1 1/8" DIA. SCREWED
8. THREADS PER IN. & FITTED WITH NUTS.

The Wallaseed Slipway &

N^o 557

Armstrong Whitworth & Co

S/S N^o 723

6SE

W P 180 ^{1/4}



No 6391
Lloyds List
360 lbs
G.A.H. 29/8/02

J.P. Silverlip

Newcastle Report

N^o 45021

RETAIL



© 2020

Lloyd's Register
Foundation

W773 - 0118