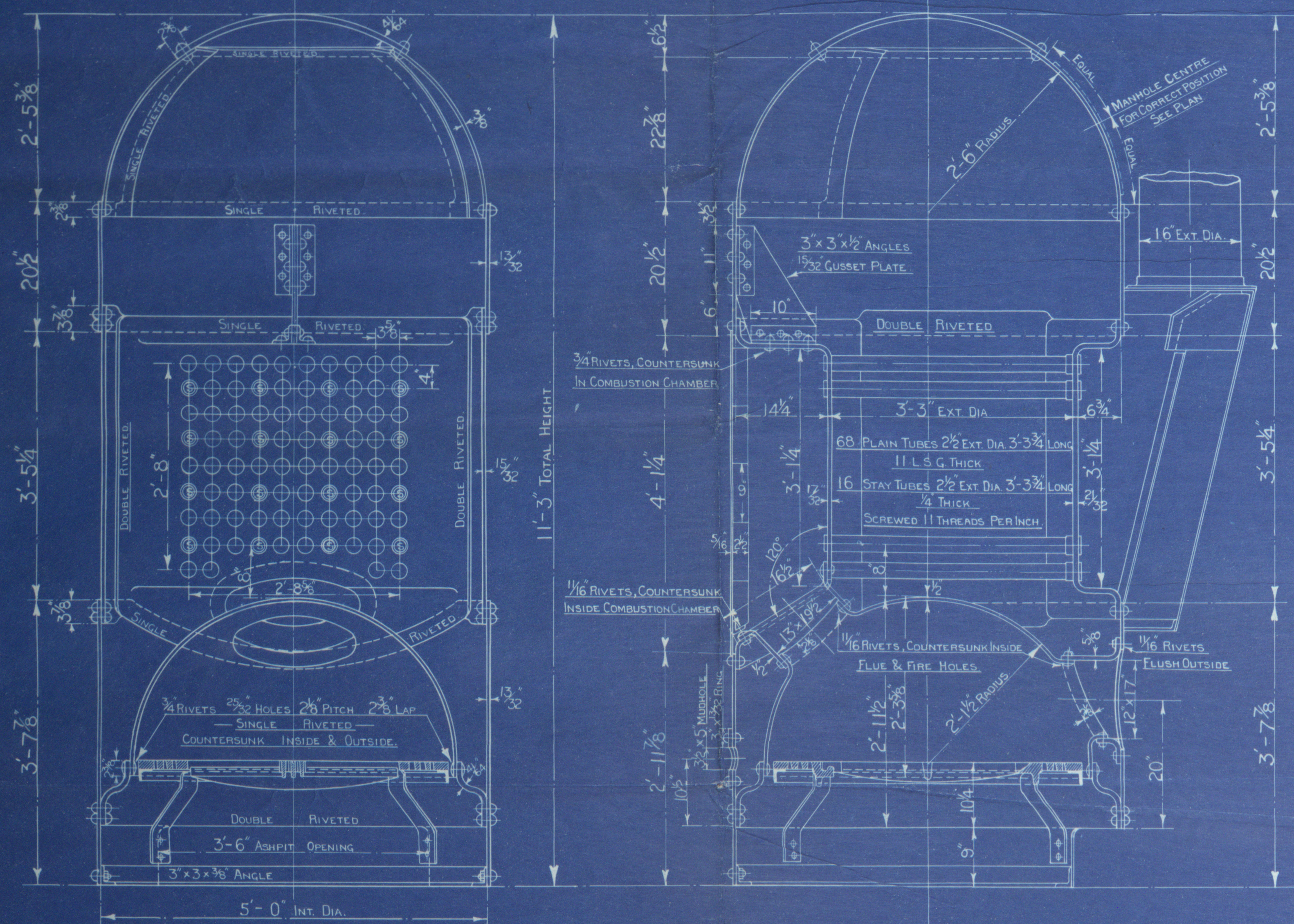


COCHRAN PATENT VERTICAL MULTITUBULAR BOILER.

HORIZONTAL FLUE TUBES.

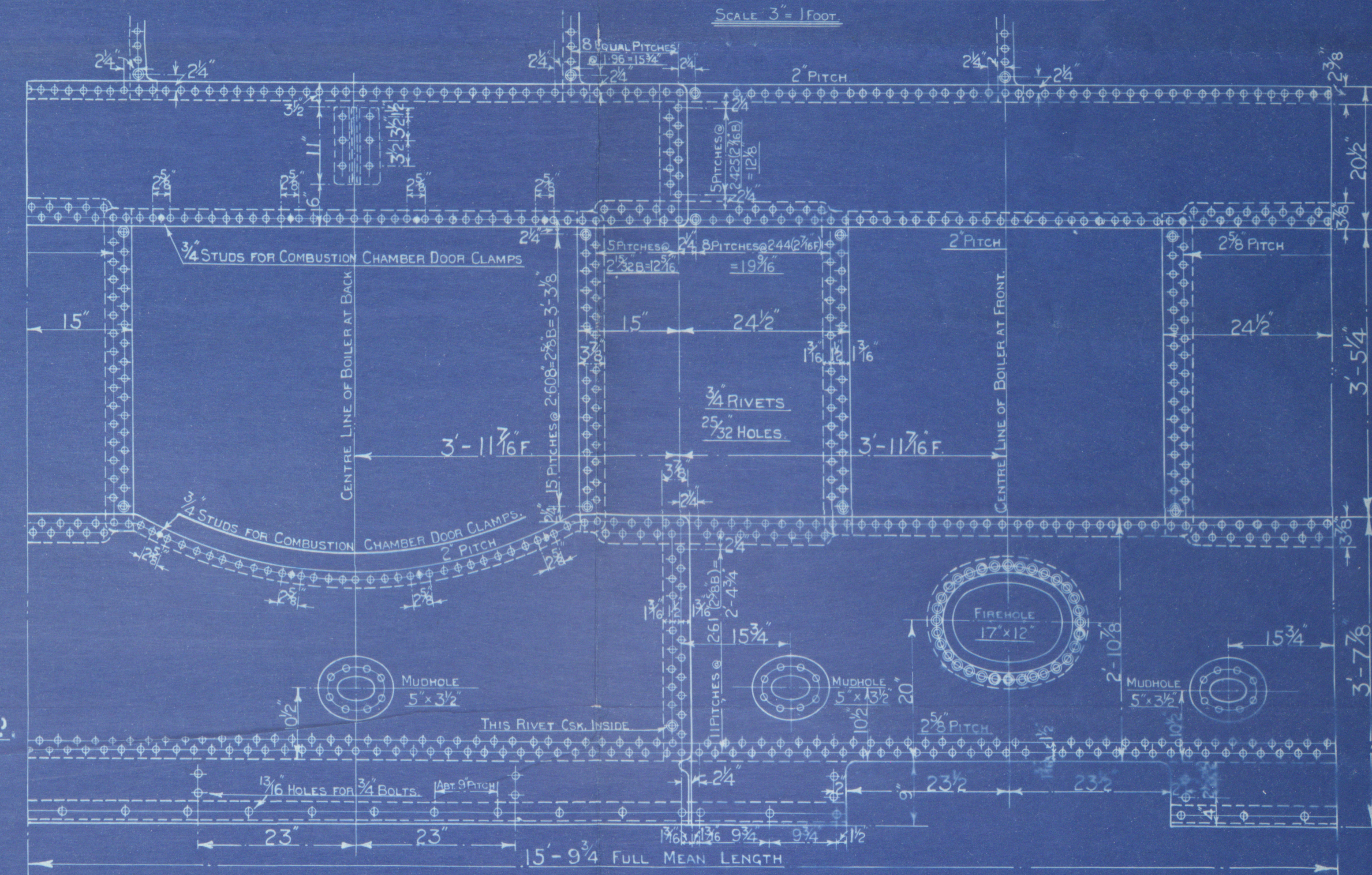
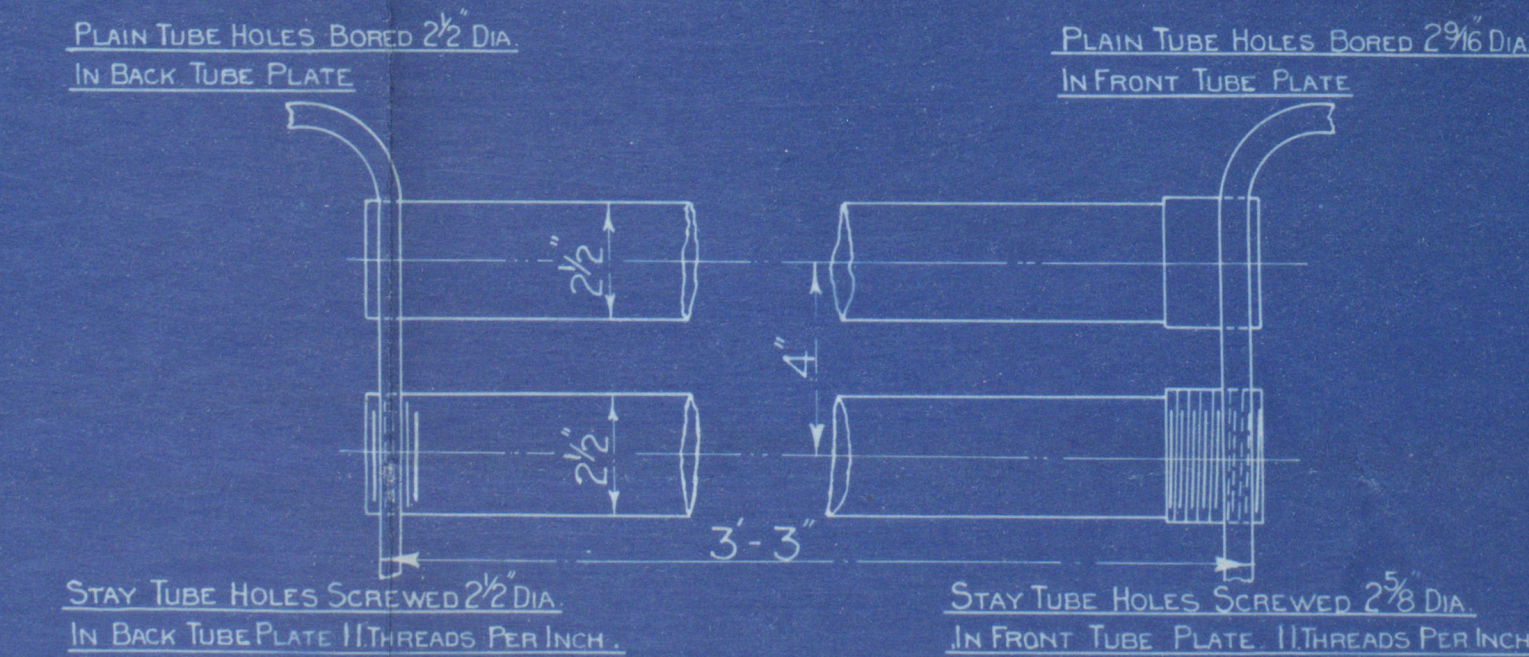


HEATING SURFACE.	
TUBES	173 Sq Ft.
PLATE	47 Sq Ft.
TOTAL	220 Sq Ft.
GRATE AREA	12.5 Sq Ft.

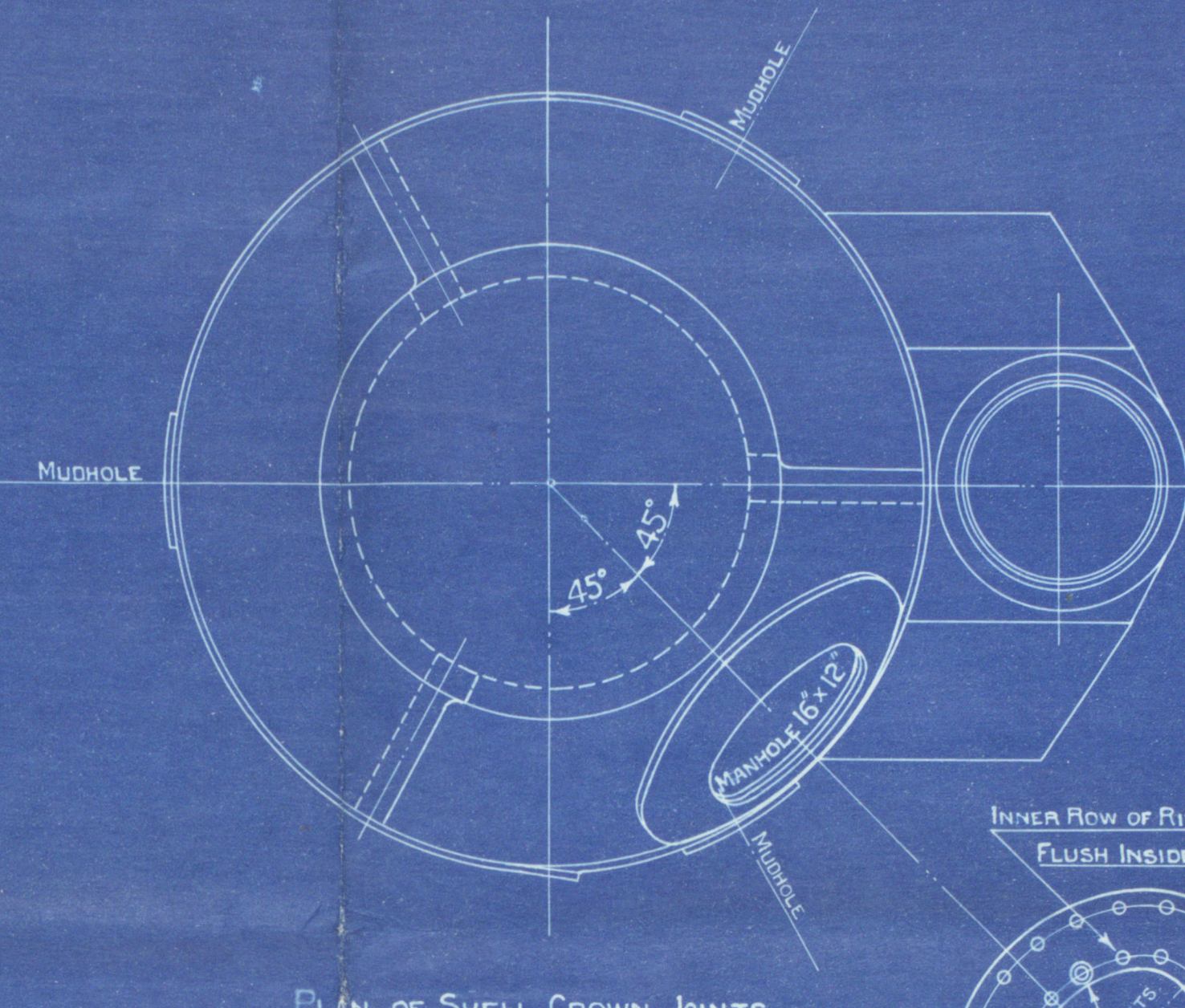
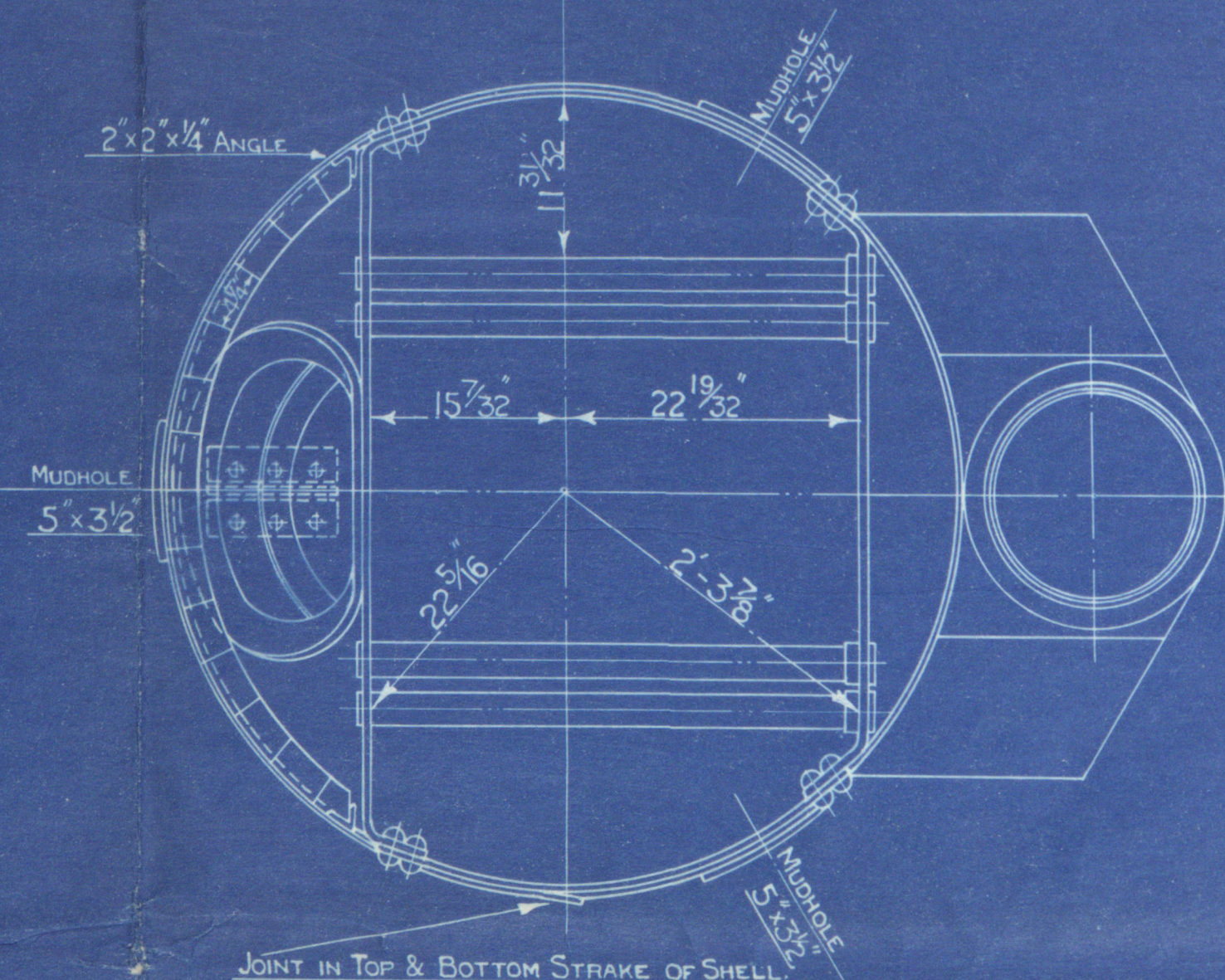
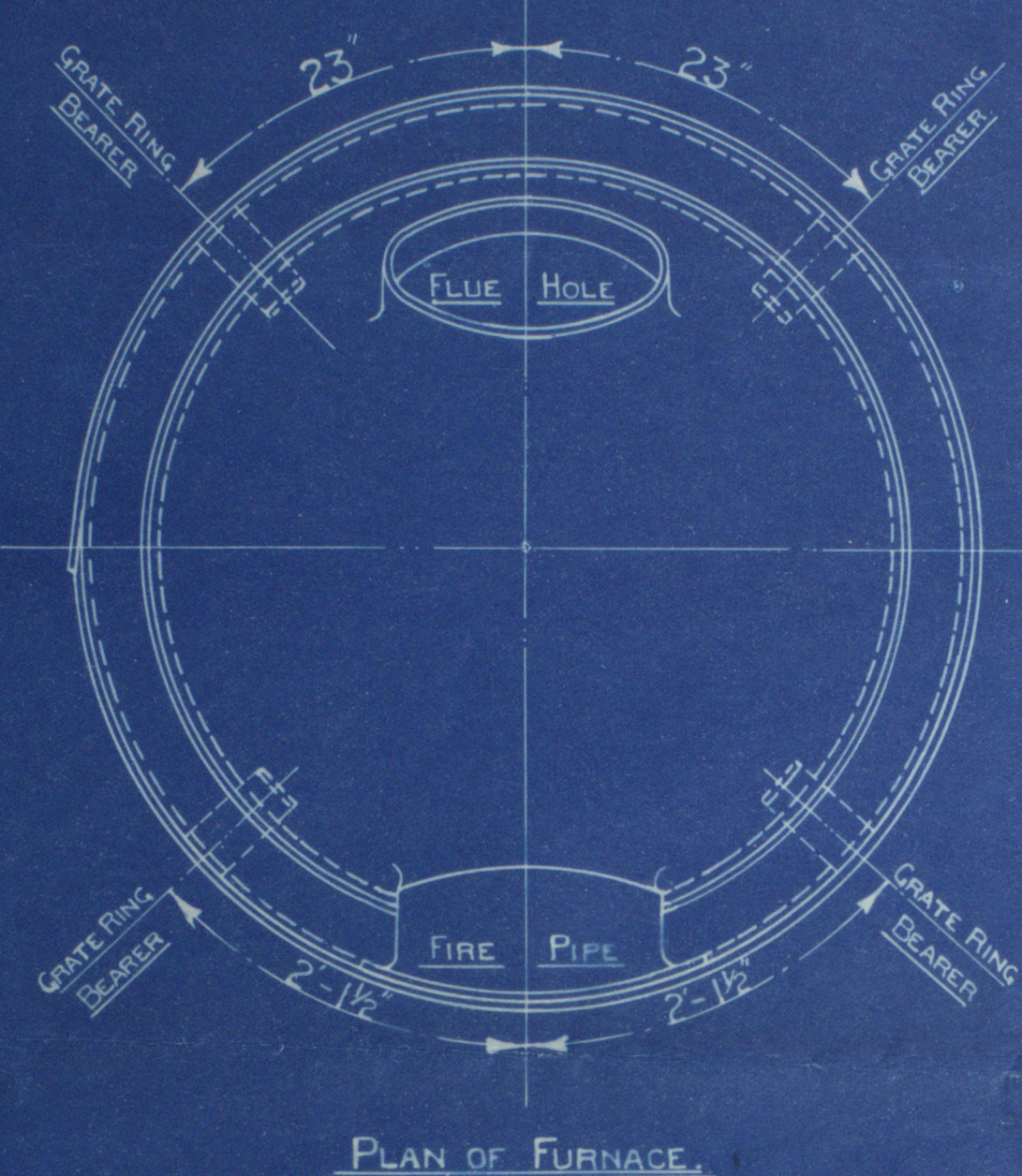
LLOYDS.	
PLATE	2425 - 78125 X100 = 67.7%
RIVETS	28 x 2 1/2 x 4 7/8 x 4 9/16 = 80.7%
FRONT TUBE PLATE	4 - 2 1/2 x 100 = 35.1%
BACK TUBE PLATE	4 - 2 1/2 x 100 = 37.5%
SHELL	20.5 (6.5 x 2) 67.7 = 104 LBS.
FRONT TUBE PLATE	20.5 (10.5 x 2) 35.1 = 102 LBS.
BACK TUBE PLATE	20.5 (10.5 x 2) 37.5 = 103.8 LBS.
FURNACE	1250 x 6 1/2 = 147 LBS.
GRATE RING	51 x 10 1/2 = 100.3 LBS.

BUREAU VERITAS.	
PLATE	1677 x 2400 (40625 - 04) = 129.7 LBS.
RIVETS	28 x 2 1/2 x 4 7/8 x 24 x 2240 = 131.6 LBS.
FRONT TUBE PLATE	10400 x 656 (4 - 2593) = 127 LBS.
BACK TUBE PLATE	10400 x 5312 (4 - 25) = 109.6 LBS.
FURNACE	600 (8 1/2) = 141 LBS.

COCHRAN & CO ANNAN LTD.
ENGINEERS & BOILERMAKERS
ANNAN, SCOTLAND.



BOARD OF TRADE.	
PLATE	2425 - 78125 x 100 = 67.7%
RIVETS	28 x 2 1/2 x 4 7/8 x 4 9/16 = 80.7%
FRONT TUBE PLATE	4 - 2 1/2 x 100 = 35.1%
BACK TUBE PLATE	4 - 2 1/2 x 100 = 37.5%
SHELL	20.5 (6.5 x 2) 67.7 = 104 LBS.
FRONT TUBE PLATE	20.5 (10.5 x 2) 35.1 = 102 LBS.
BACK TUBE PLATE	20.5 (10.5 x 2) 37.5 = 103.8 LBS.
FURNACE	1250 x 6 1/2 = 147 LBS.



Approved 5-2-12
PATENT BOILER NO 6759

5'-0" x 11'-3" x 220# x 100 LBS.

SCALE 1 INCH TO 1 FOOT.

SIEMENS MARTIN MILD STEEL PLATES.

- TENSILE TESTS -

PLATES NOT EXPOSED TO FLAME OR FLANGED ----- 28 TO 32 TONS.
PLATES EXPOSED TO FLAME OR FLANGED EXCEPT FEE. CROWN ----- 26 TO 30 TONS.
FURNACE CROWN ----- 26 TO 29 TONS.

STANDARD.
SURVEY - LLOYDS.

DRAWING NO 8918.

COCHRAN & Co., ANNAN, Ltd.

Enclosure

FOR

Messrs.....

Lloyd's Register

Dⁿ N^o 8918
S/S 273

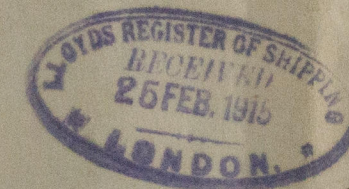
COCHRAN & CO., ANNAN, LD.

Boiler No. 6459

Drawing No. 8918.

Dum. de Ship building Co. S/S 273.

GLASGOW REPORT No. 34875



⁵/₈ - Stock Force Hull Rpt No 29836
Dum. Rpt. No 7982.

RETAIN

W470-0048



© 2020

Lloyd's Register
Foundation