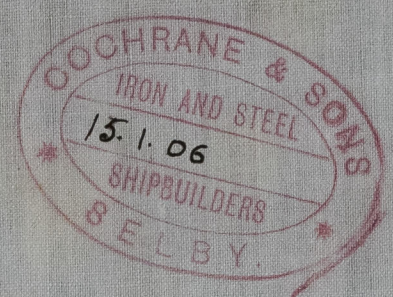


148.71

18.1.06

# MIDSHIP SECTION STEEL SCREW TRAWLER No 371



DIMENSIONS 125'0" x 22'0" x 12'6" DEPTH MOULDED  
SCALE 1/2" = 1 FOOT

TO CLASS 100.A.1 AT LLOYD'S FOR FISHING PURPOSES  
ENGINE & BOILER CASING AS PREVIOUSLY APPROVED  
DECK PLATED IN WAY OF E & B CASING

LLOYD'S NUMBERS

1/2 BREADTH	10.95
1/2 GIRTH	19.80
DEPTH	12.95
	43.70 17 <sup>th</sup> NO
	125.75 RULE LENGTH
	5407.87503 <sup>rd</sup> NO

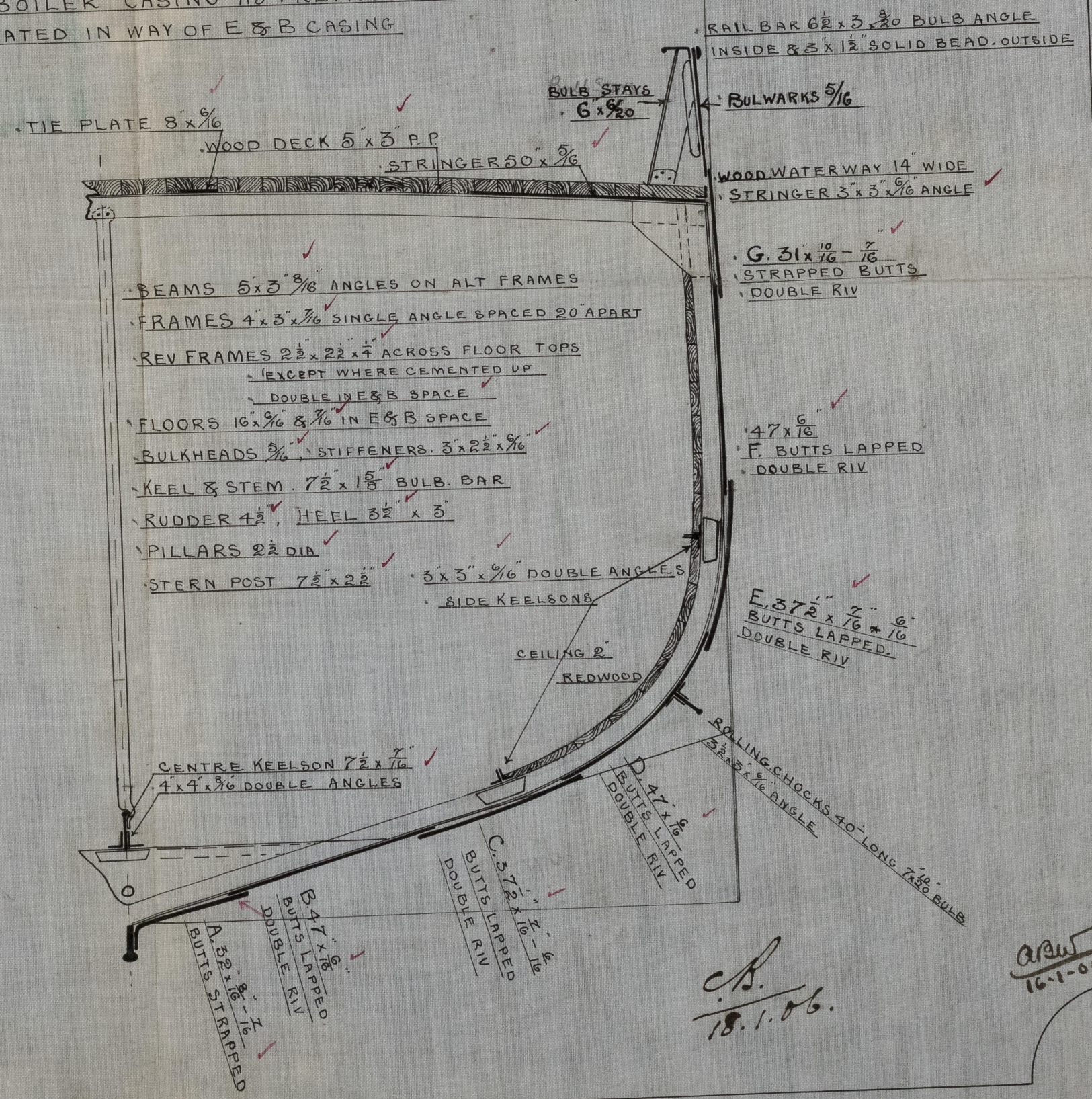
PROPORTIONS

DEPTHS TO LENGTH	9.6
BREADTHS	5.6

EQUIPMENT

1 <sup>ST</sup> BOWER	5 1/2 CWTs EX STOCK
2 <sup>ND</sup>	5
3 <sup>RD</sup>	2 1/2
105 FATH <sup>s</sup>	1 1/2 CABLE
GO	6 HAWSER
GO	4 1/2 WARP

Cochrane & Sons  
Shipbuilders  
Selby.



C.B.  
18.1.06.

ASW  
16.1.06



Cochrane & Sons.

No. 341.

Midship Section.

Sp. Westminster

Hull Report No. 18015

RETAIN

W765-0098

Midship Section 371



© 2021

Lloyd's Register  
Foundation