

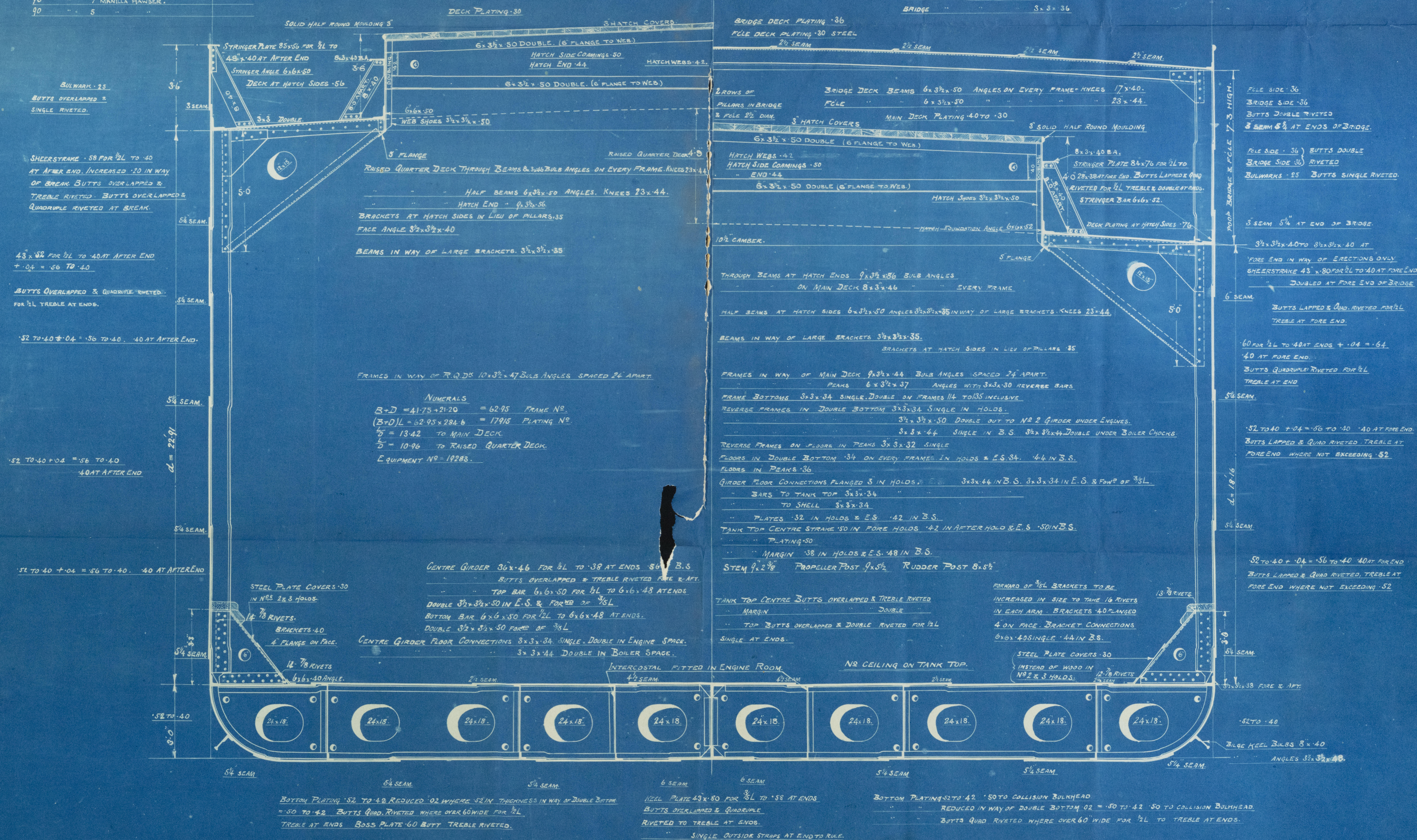
AS BUILT.

PRINCIPAL DIMENSIONS.	
LENGTH B.P.	285'-0"
BREADTH M ^{LD}	41'-8"
DEPTH M ^{LD}	21'-2"

- SCALE $\frac{1}{2}'' = 1$ FOOT.

WOOD SKINNER & CO LTD
SHIPBUILDERS
NEWCASTLE-ON-TYNE.

EQUIPMENT			
2	BOWER	ANCHORS	38 ³ / ₄ CWTs STOCKLESS
1	"	ANCHOR	32 ¹ / ₂ " "
1	STREAM	"	10 " Ex Stock
1	KEDGE	"	5 " "
240	FATHOMS	STUD CHAIN	CABLE 1 ¹⁵ / ₁₆
75	"	44	STEEL WIRE HAWSER.
90	"	TOWLINE	4" STEEL WIRE
90	"	HAWSERS	2 ¹ / ₂ STEEL WIRE 2 OFF
90	"	WARPS	2 ¹ / ₂ " 2 OFF.
90	"	7"	MANILLA HAWSER.
90	"	5	" "



№ 210 SHIP.

W763-0164



Wood Churners 210.

S. S. "WAR BALLOON"
NEWCASTLE ON TYNE.

Report No. 71075.

W763-0164



© 2021

Lloyd's Register
Foundation

RETAIN



© 2021

Lloyd's Register
Foundation