

20.5.14

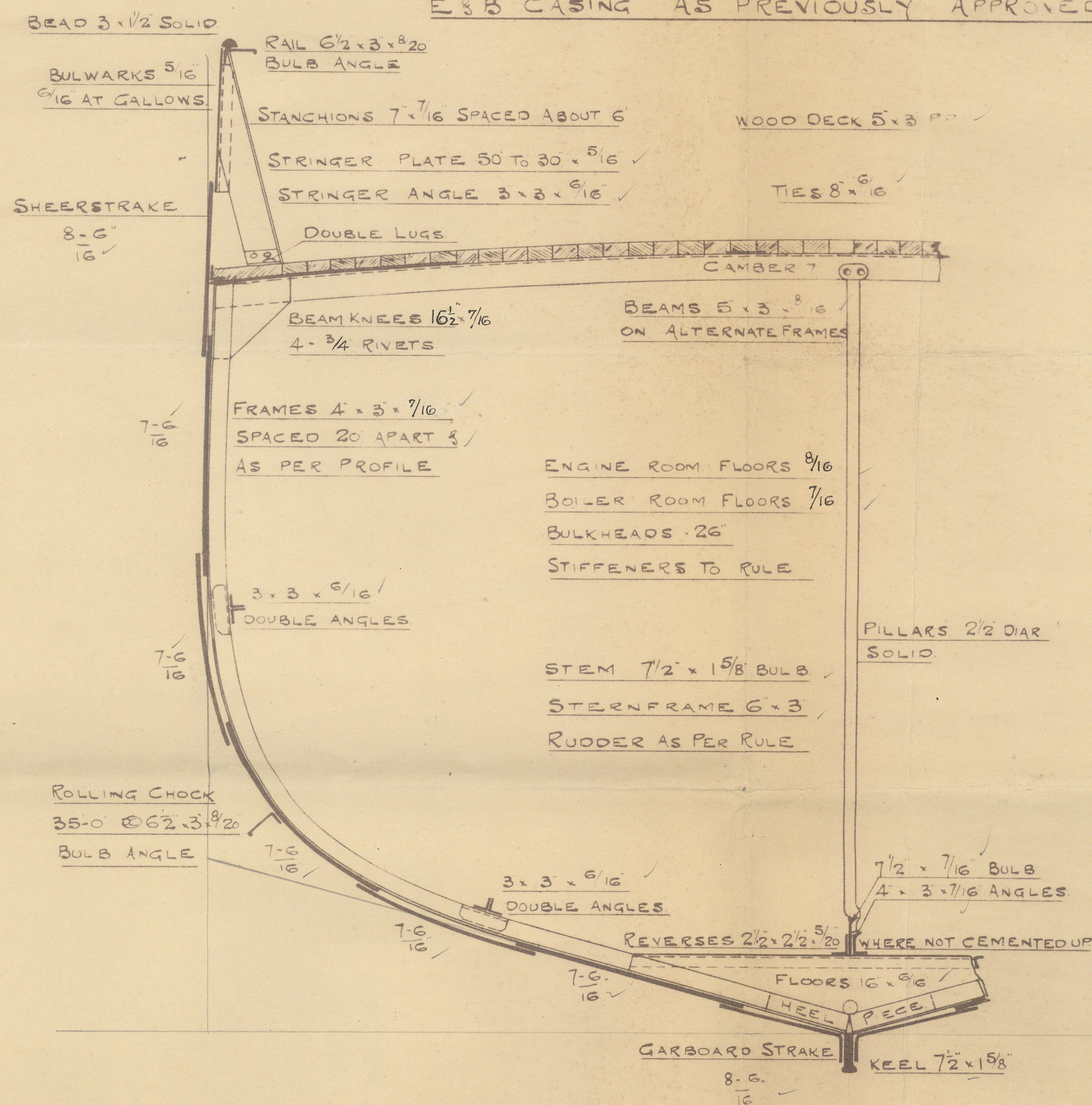
# MIDSHIP SECTION STEEL SCREW TRAWLER N°614

DIMS. 125'-0" B.P. x 22'-3" EX x 12'-9" MLD

SCALE 1/2" INCH

TO CLASS 100A1 - LLOYDS STEAM TRAWLER  
DECK PLATED OVER IN WAY OF MACHINERY  
E & B CASING AS PREVIOUSLY APPROVED

PLAN No. 4314  
FOR ENCLOSURE TO  
MESSRS. LLOYDS SURVEYOR  
HULL FROM  
COCHRANE & SONS, LTD.  
SHIPBUILDERS, SELBY.  
DATE 15/5/14 1810



## NUMERALS

B + D 34.875  
L x (B + D) 4359.375

## PROPORTIONS

L/D 9.8  
L/B 5.6

## EQUIPMENT

1ST BOWER 52 CENTS EX STOCK OR TC STOCK  
2ND 5 6/4  
KEGGE 2 1/4 EX STOCK  
105 FATHOMS 1 1/2 STUOLINK CABLE  
60 6 HAWSER  
60 42 WARP

## RIVETING

BUTTS OF SHELL PLATING TO BE LAPPELLED  
DOUBLE RIVETED EXCEPT GARBOARD  
& SHEERSTRAKE WHICH ARE TO BE  
STRAPPED  
SHELL SEAMS DOUBLE RIVETED  
BULWARK SEAM SINGLE RIVETED  
RIVETS IN KEEL, STEM & STERNFRAME 1 DIA  
SHELL RIVETS 3/4 DIA

*ccp*  
20.5.14.



© 2021

Lloyd's Register  
Foundation

W760-0069



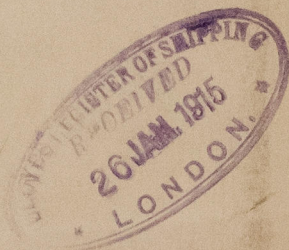
Midship Lecler.

Cochrane: no 614.



sp. "Tajpo" Hull Rpt. No. 28225.

RECEIVED



RECEIVED



© 2021

Lloyd's Register  
Foundation

W760-0069