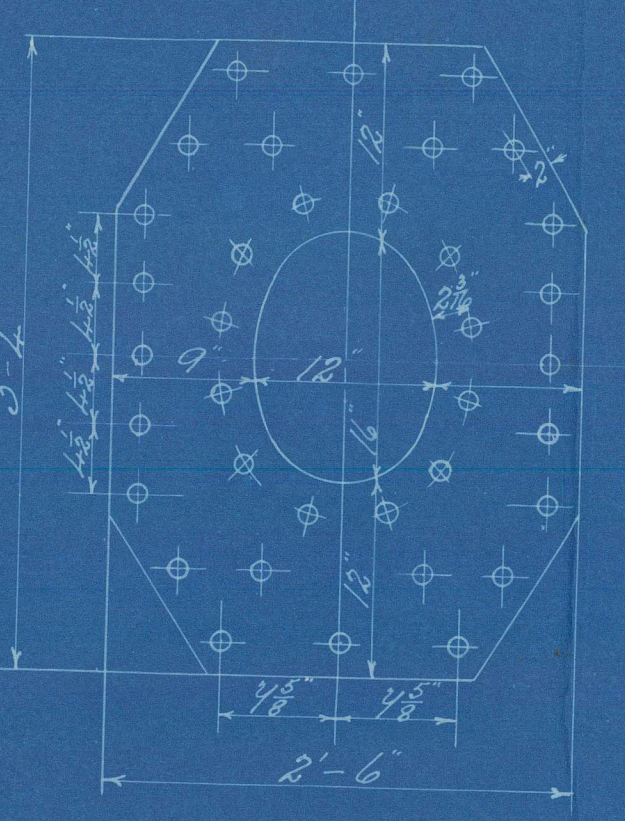


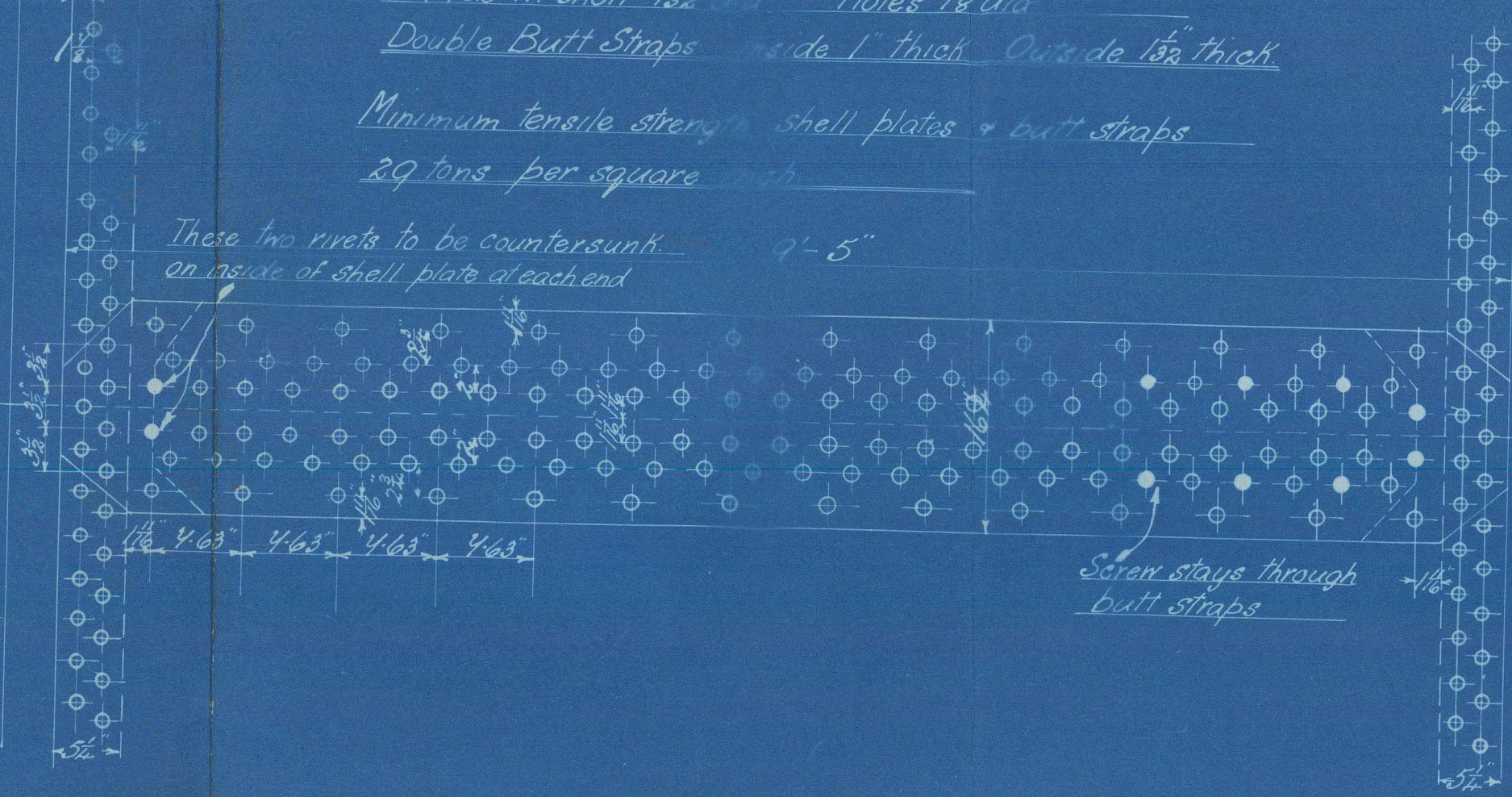
DIA OF BOILER 13'-0" ins dia.
 LENGTH OF D^o 10'-2" inside bottom plates
 NUMBER OF TUBES 180
 LENGTH OF D^o 6'-6" between plates
 DIA OF D^o 3 1/2" AREA THRO TUBE 9.3 sq ft
 HEATING SURFACE IN TUBES 1090 sq ft
 TOTAL HEATING SURFACE 1400 sq ft
 FIRE BAR SURFACE 4'-6" Bars 40 1/2 sq ft
 DIA OF SAFETY VALVES
 CUBIC FEET OF STEAM SPACE 290 (6 above C.G. 74 1/2)
 WORKING PRESSURE 180 lbs

Note 1
 Studs on manhole doors are
 not to project through nuts
 when nuts are nipped up.

Doubling plate 1/2" thick.
 Rivets 1 1/2" Holes 1 1/2" dia.
 Fitted outside shell with stud
 rivets longitudinally.



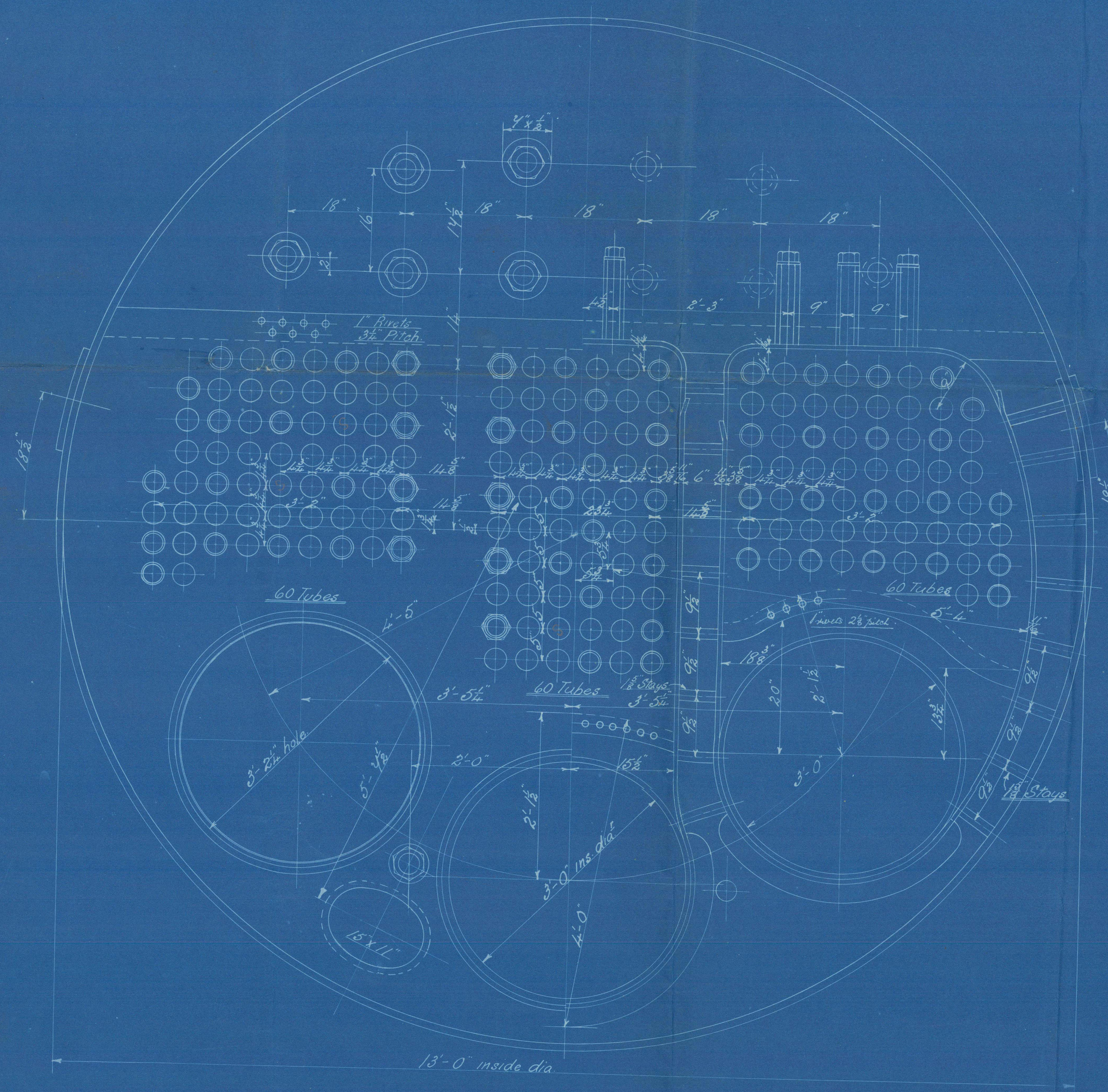
Circumferential seams 3/4" pitch.
 1/2" plate 64 1/2"
 1/2" rivet 4 1/2"
 Longitudinal seams 4 1/2" pitch.
 1/2" plate 64 1/2"
 1/2" rivet 4 1/2"
 All rivets in shell 1 1/2" dia. Holes 1 1/2" dia.
 Double Butt Straps inside 1" thick Outside 1 1/2" thick.
 Minimum tensile strength shell plates & butt straps
 29 tons per square inch.



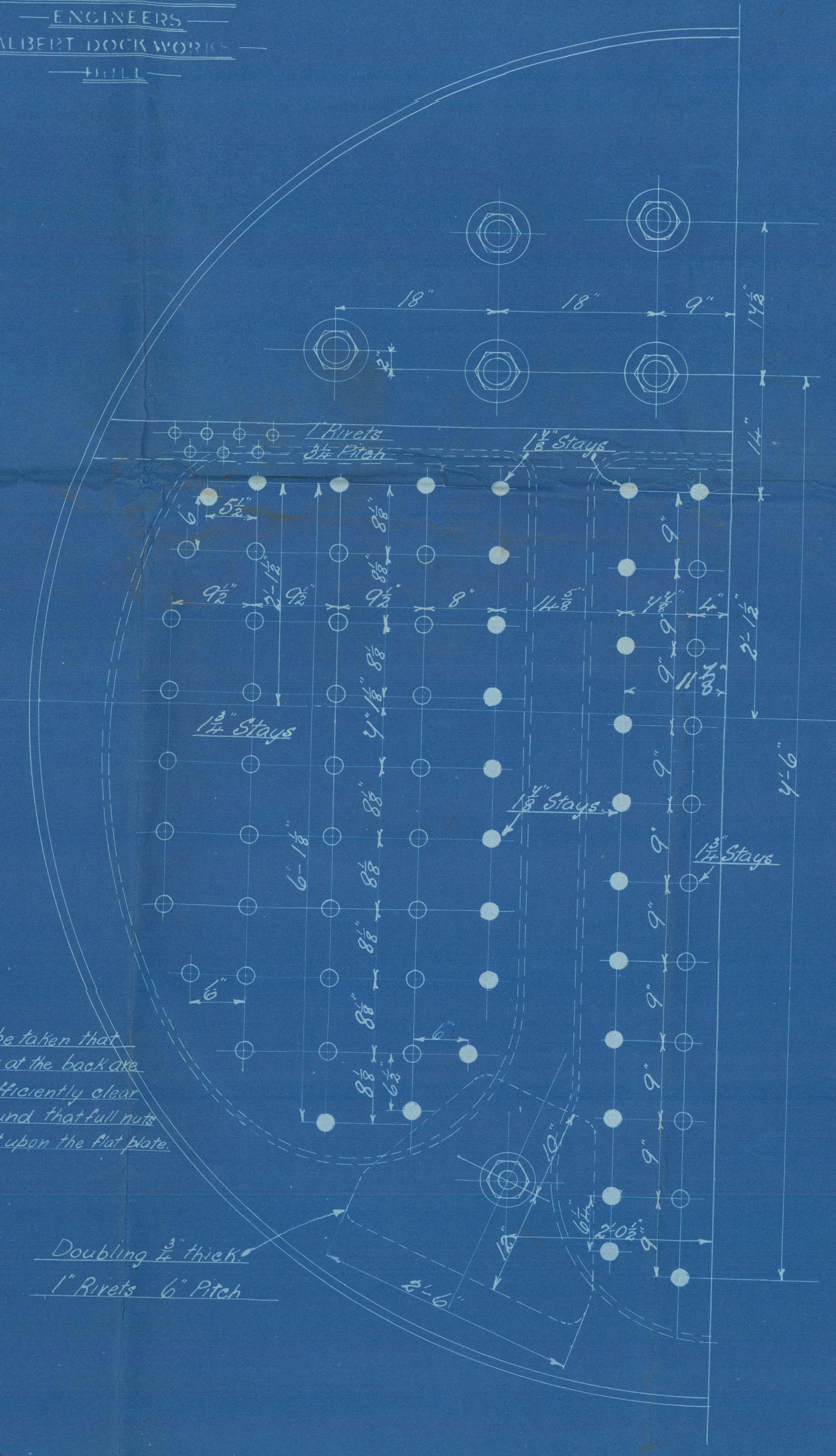
Note: The plates rivets & stays of steel by the Siemens Martin
 process. All rivet holes drilled throughout the boiler
 these in shell after the plates are bent. Stays are not to
 be welded. Tubes are of iron.
 All flanged plates to be annealed after the plates are bent.
 The combustion chamber stays are screwed into both
 plates and fitted with a nut at each end.
 Washers on outside of shell only. None inside C.C.

Particulars of Staying

Stay	Dia"	No. of threads per inch	Eff area of bottom of thread
Steam Space Stays	3"	6	6.10 sq ins
Tube Plate	2 1/2"	6	5.055 sq ins
Bottom Stays	3 1/2"	9	2.364 sq ins
Stay Tubes	1 1/2"	10	1.74 sq ins
C.C. Stays	1 1/2"	10	2.066 sq ins
"	1 1/2"	10	2.394 sq ins



AMOS & SMITH LTD
 ENGINEERS
 ALBERT DOCK WORKS
 LONDON



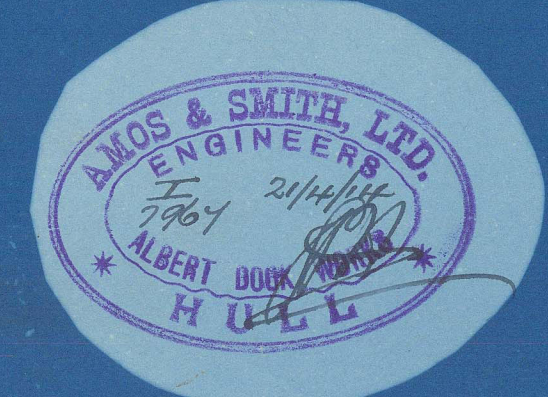
Care to be taken that
 C.C. stays at the back are
 kept sufficiently clear
 of the round that full nuts
 can be got upon the flat plate.

Doubling 1/2" thick
 1" Rivets 6" Pitch

10465

STEEL BOILER No 2506

Paul
 23.4.14
 J.P.R.



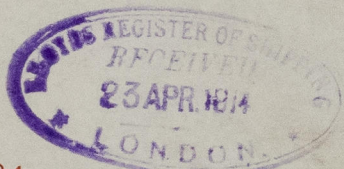
TITLE Steel Boiler
 FOR WHOM A & S L^{td}
 DATE 20/4/14
 ORDER 2506 (102)
 IF MADE
 SCALE 1 Foot
 Register
 Foundation

Amos & Smith Boiler

No. 2506

W.P. = 180 lbs

This boiler is a duplicate

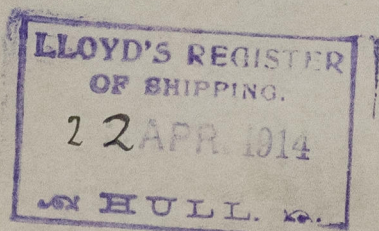


of

No. 2502-5

As Tapes - Hull Rpt. no. 28225

No 3046
Lloyds test
3 bolts
1-12-14 F.L.S.



© 2021

Lloyd's Register
Foundation

W760-0068