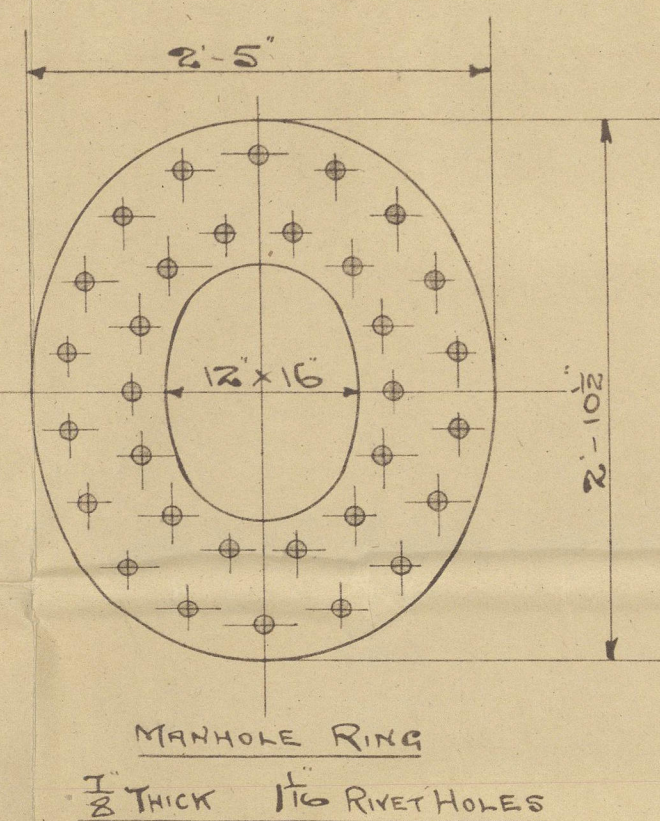
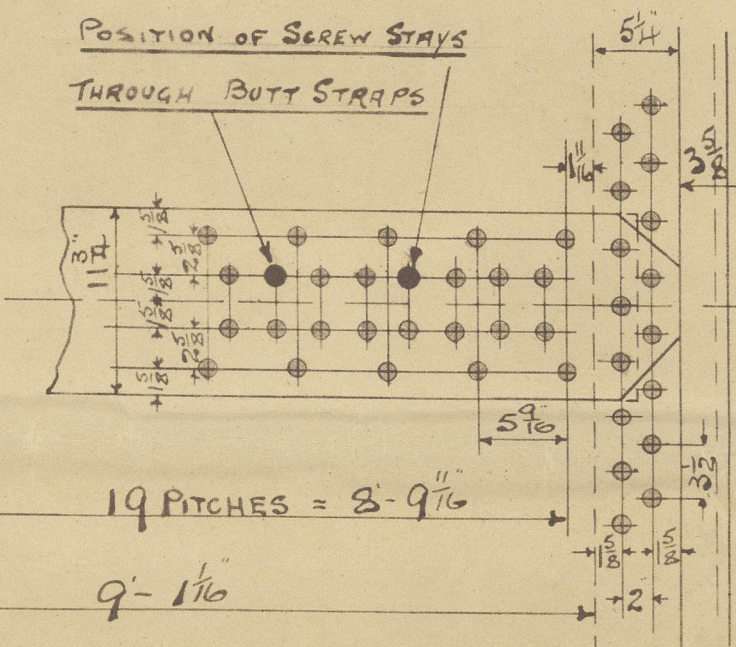


HEATING SURFACE	
TUBES	1703
CHAMBERS	237
FURNACES	120
FRONT TUBE PLATE	30
TOTAL	2080

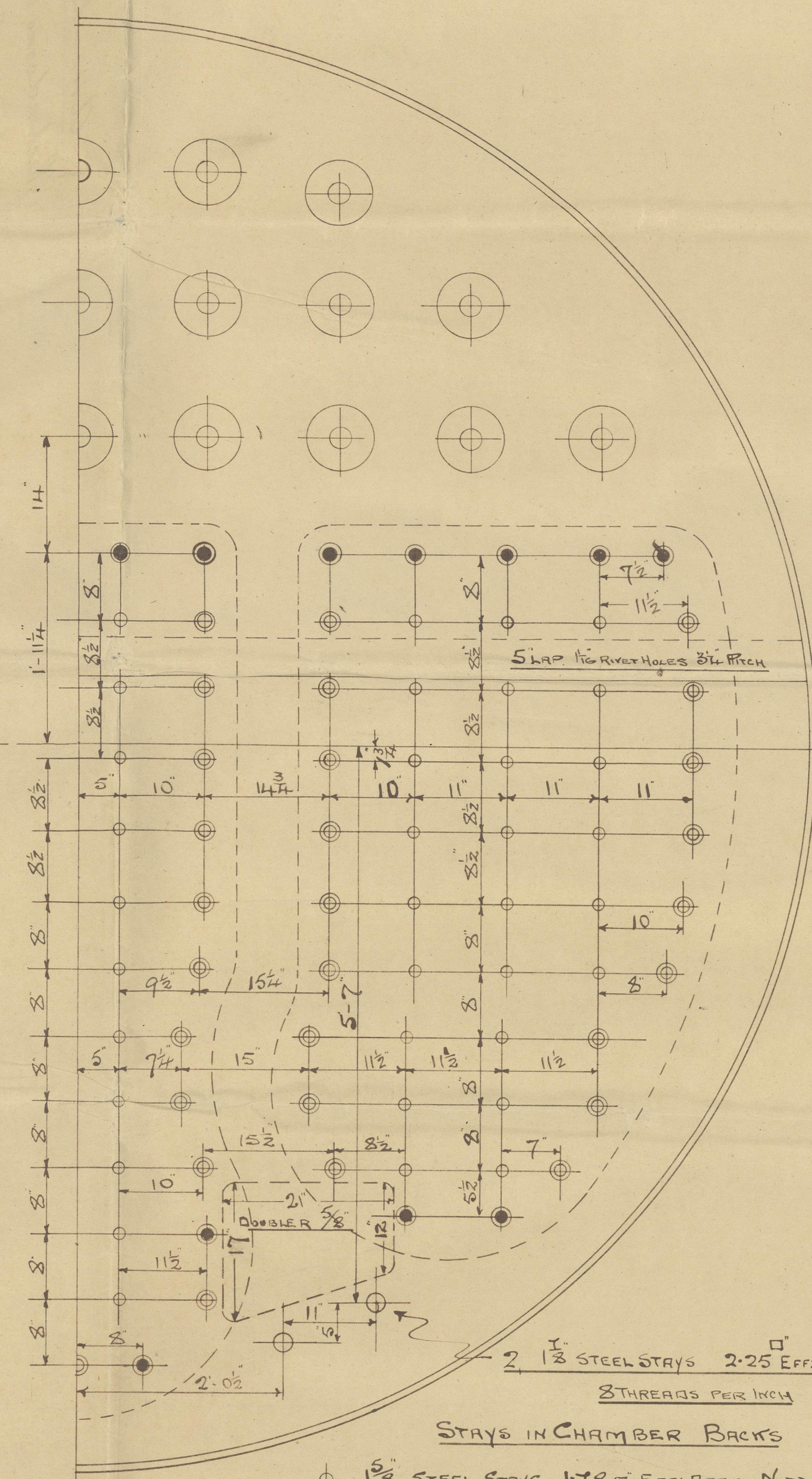
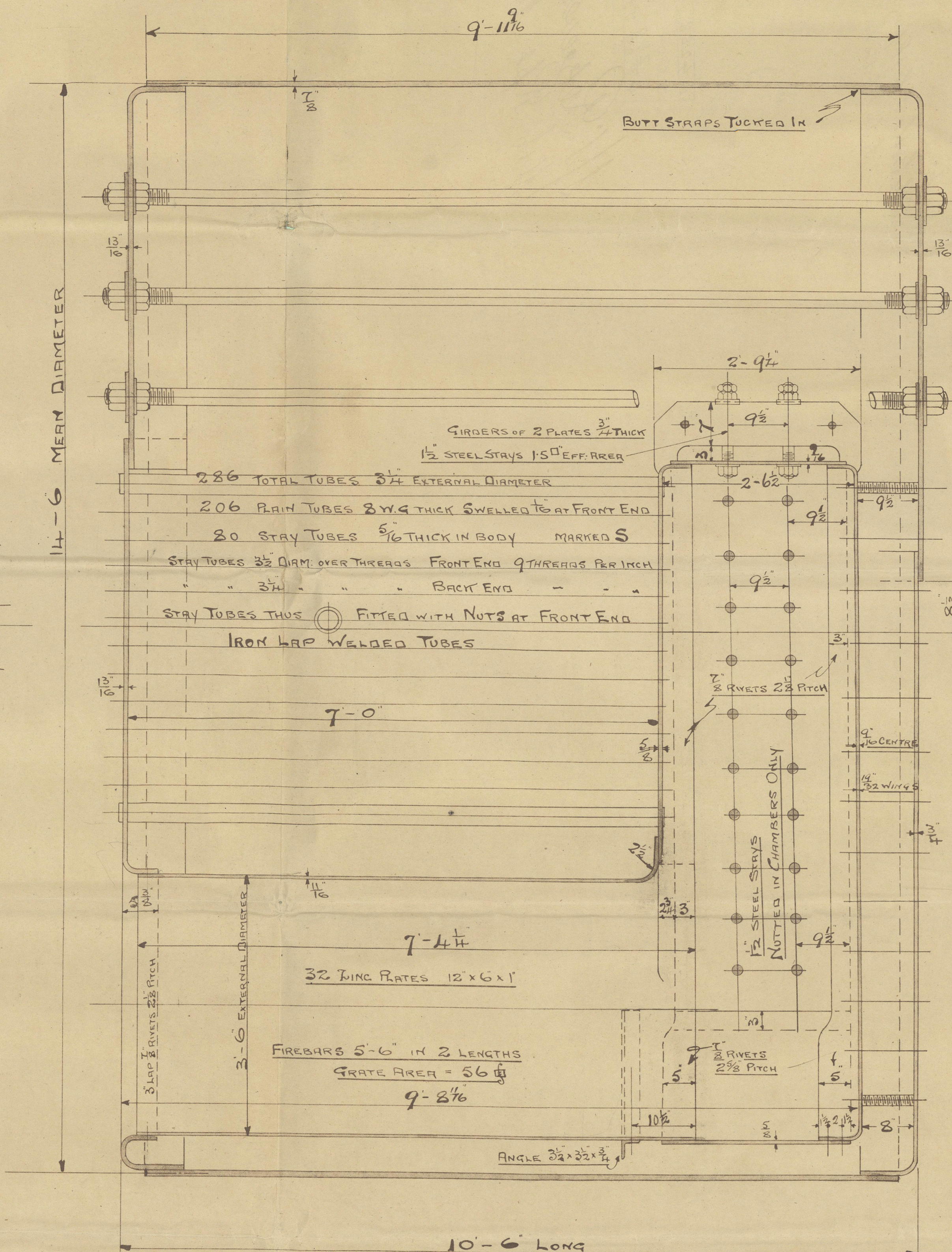
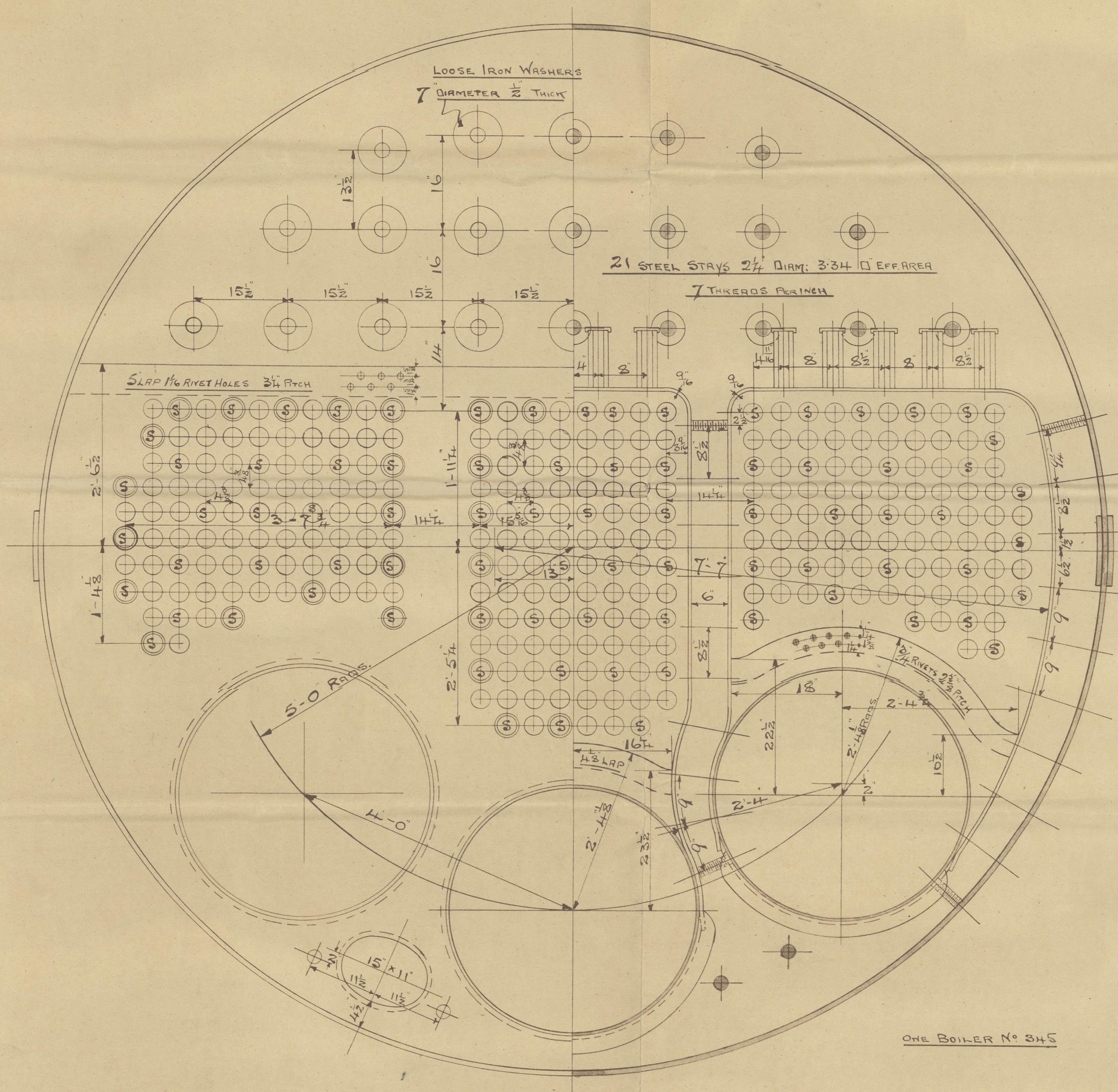
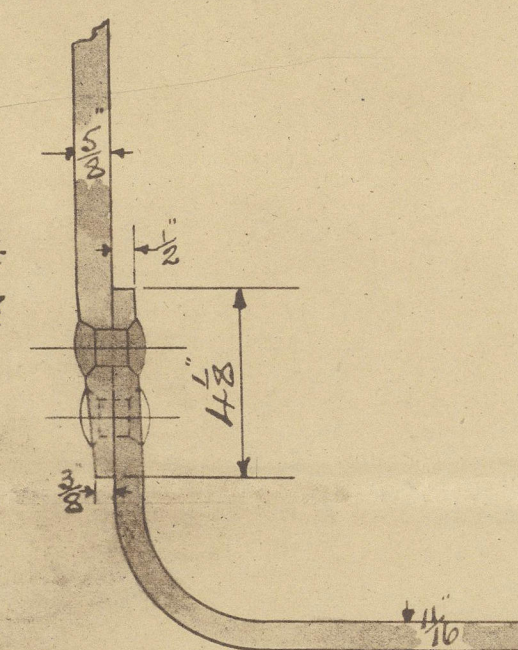


14/12/08

LONGITUDINAL SEAMS, 1/16" RIVET HOLES, RIVETS, 5 9/16" PITCH
CIRCULAR - 1/16" - 1 - 3 1/2" -
DOUBLE BUTT STRAPS 3/8" THICK



DETAIL OF BACK TUBE
PLATE & FURNACE JOINT



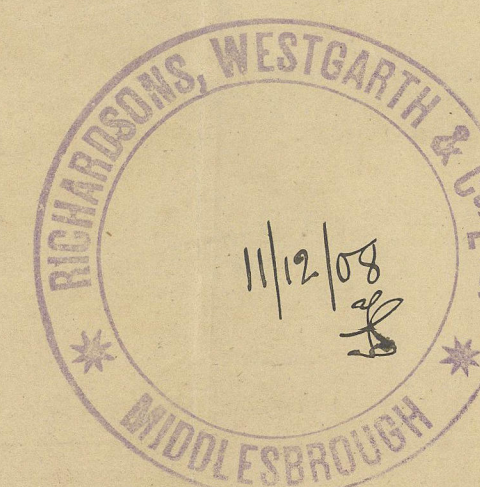
TO PASS LLOYDS SURVEY FOR 120 LBS WORKING PRESSURE
TENSILE STRENGTH OF SHELLS, BUTTS, & MANHOLE PLATES 28 3/4 TO 32 TONS
" " OF ALL OTHER PLATES & SCREW STAYS 26 TO 30 "
" " OF LONGITUDINAL STAYS 28 TO 32 "

BOILER NO 345

FOR MESSRS THE GOOLE SHIPBUILDING & REPAIRING CO. 3/8 NO 124

SCALE 1" = 1 FOOT

7/12/08
14/12/08
14.12.08



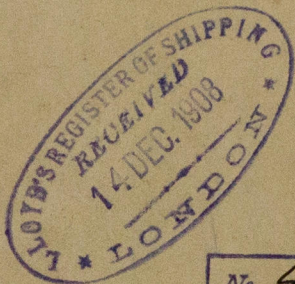
Amended Print



12/12/08

Amended plan
Richardsons, Westgarth & Co. Ltd.
Main Boiler No. 345
for
The Goolle S. B. & Rpyng. Co. Ltd.
S. S. No. 124

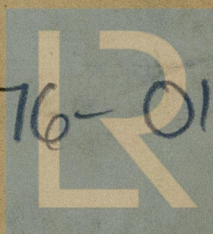
120 lbs 10. 8.



No. 4258
LLOYD'S TEST
240 lbs.
4.5.09 J.K.

S/S Retriever
Lab. Rpt. No. 5852.

W76-0119



© 2020

Lloyd's Register
Foundation