

Lloyd's Register of British & Foreign Shipping.

Surveyors' Office, DÜSSELDORF.

This is to certify, that Paul Abel the undersigned surveyor to this society tested in the works of Eutechhoffnungshütte bet. Verein of Oberhausen the Siemens Martin Boilersteel plates specified hereunder, ordered by Messrs. Charles F. Holmes & Co. of Hull for the ship No. 833 and that the results of tests proved to be as set forth below.

Batch-number.	Dimensions.			Designed for	Sample number	Charge-number	Tensile tenacity			Elongation in 200 mm. in %.	Bending tests		Remarks.
	Length.	Breadth.	Thick-ness.				As per rules.	Ord-ered.	By test.		Cold.	Tem-pered.	
	Conn. 1800.						Tons per sq. inch						
<i>Plates</i>													
1	11' 6"	9' 4 1/2"	1 1/32"	Shellplate	7	85429	28-32	28-32	28.7	27	good	good	
1	6' 10"	9' 5"	7/8"	Endplate	2	85440	26-30	26-30	27.0	29	"	"	
1	"	"	15/16"	"	6	"	"	"	26.6	29	"	"	
2	"	4' 8"	1 1/16"	"	1	85441	"	"	27.9	23	"	"	
2	11' 3"	8' 1"	1 1/16"	fireman	14	85437	"	"	27.1	28	"	"	
2	8'	6'	7/8"	Backtubepol.	12	85440	"	"	27.8	28	"	"	
2	7' 10"	"	1 1/16"	Cumbr. ch. back	8	85437	"	"	28.4	24	"	"	
2	5' 6"	2' 9"	2 3/32"	" " top	17	"	"	"	27.9	26	"	"	
2	17' 9"	2' 11"	"	" " sides	"	"	"	"	"	"	"	"	
2	9' 5 1/2"	1' 4"	1 1/32"	Buttstraps	5	85429	28-32	28-32	28.1	31	"	"	
2	8' 7 1/2"	"	"	"		"	"	"					
1	2' 6"	2' 2"	"	Liner	"	"	"	"	"	"	"	"	
1	4'	2' 6"	3/4"	"	1	85437	26-30	26-30	28.1	26	"	"	
1	3' 11"	2"	27/32"	"	12	85440	"	"	27.8	28	"	"	

Düsseldorf 23rd March 1907.

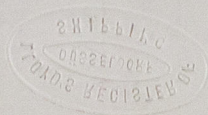
P. Abel



N.B.—Material with less than 26 Tons tensile strength may not be used in the construction of boilers for classed vessels, unless specially sanctioned by the Committee.

1 Ton per square inch = 1,574 Kilo per square millimeter. 1 Kilo per square millimeter = 0,635 Tons per square inch.

W757-0080



Southward



© 2021

Lloyd's Register
Foundation