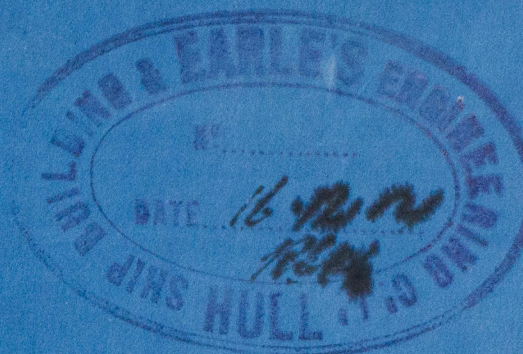




31-12-04



MIDSHIP SECTION.

Nº 495.

DIMS-108'-4" 21'-6" EX 11'-6" HOLD

CLASS 100 A.1

FOR FISHING PURPOSES

SCALE 1/2"=1 FOOT

STEEL

LLOYD'S NUMERALS

1/2 BREADTH 10.68

1/2 GIRTH 19.00

DEPTH 12.77

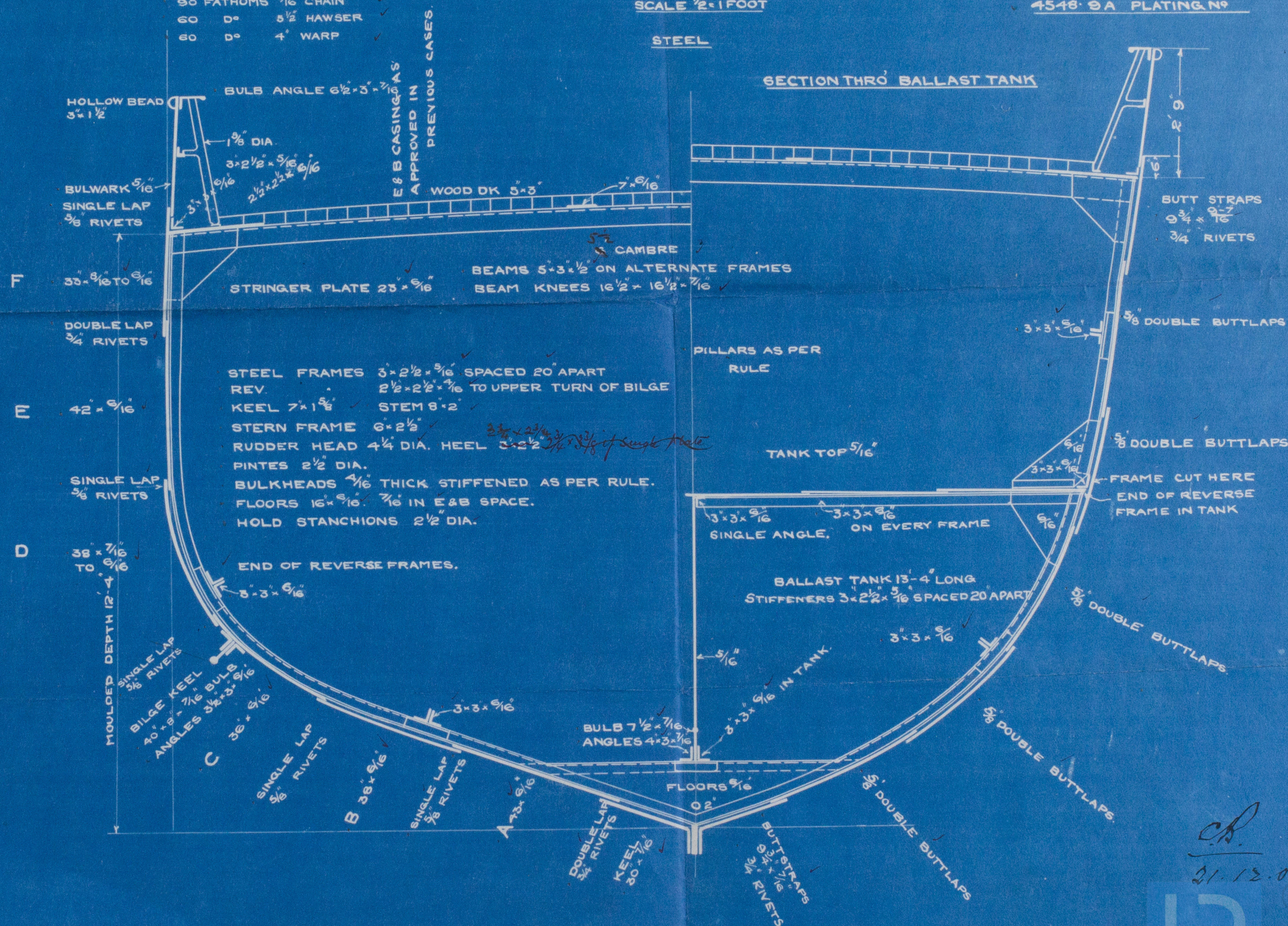
12.45 1ST NO

LLOYD'S LENGTH 107.16

4548-9A PLATING NO

EQUIPMENT

- 1 ANCHOR 4 3/4 CWT. EX STOCK
- 1 " 4 1/4 " "
- 1 " 2 1/2 " "
- 90 FATHOMS 1 1/2" CHAIN
- 60 D° 5 1/2" HAWSER
- 60 D° 4" WARP



LLOYD'S REGISTER
OF SHIPPING.
17 DEC. 1904
+ HULL. +

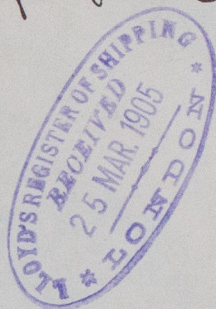


21-12-04
© 2021
Lloyd's Register
Foundation

Earle's S. & E. Co. Ltd.

N^o 495.

Midship Section.



s/s "Staffa"

Hull Report No. 16857



W 156 0071