

MARINE ENGINES N^o 1686.

MESSRS RICHARDSON, DUCK & CO S.S. N^o 612.

14/3/10

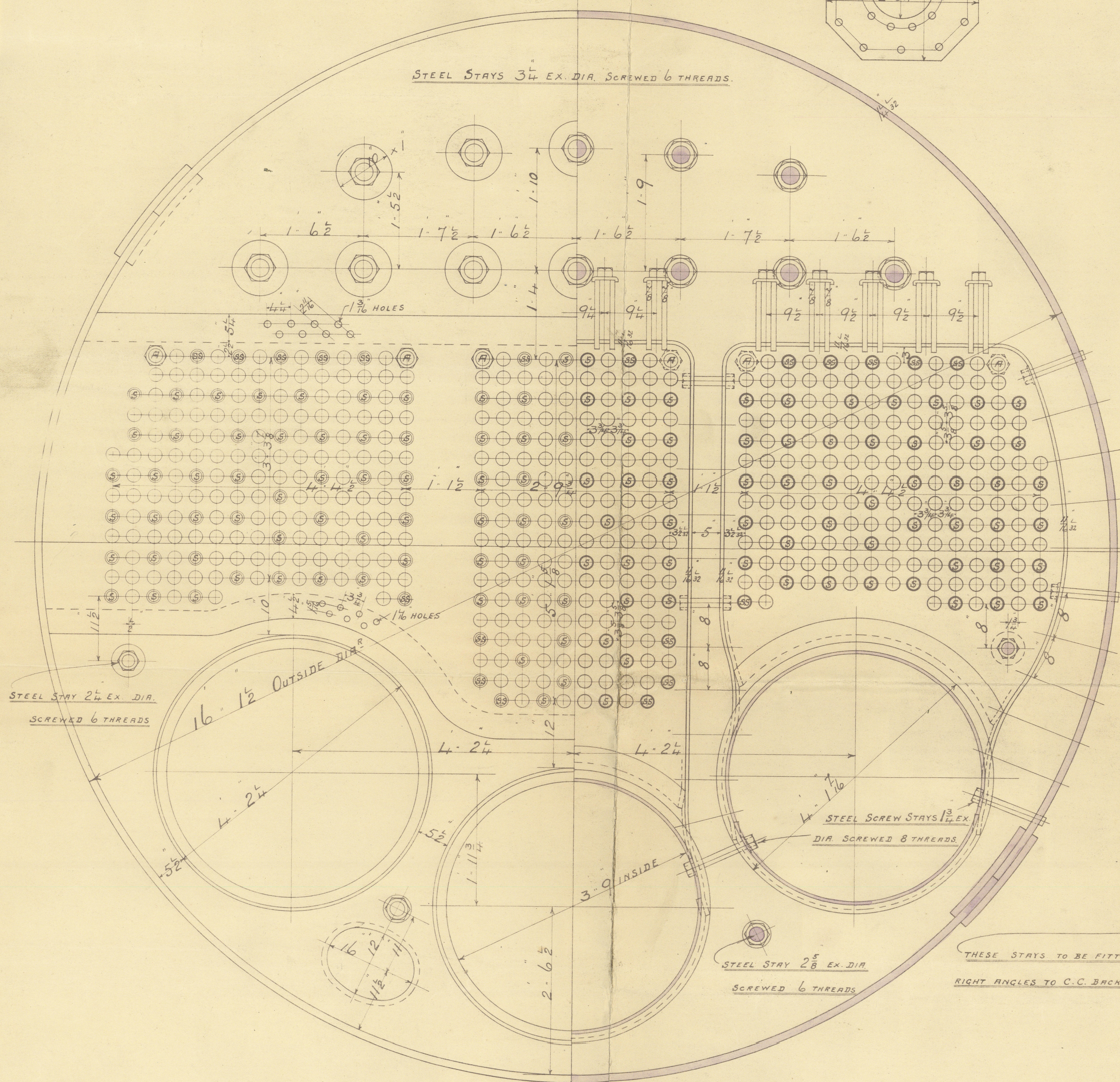
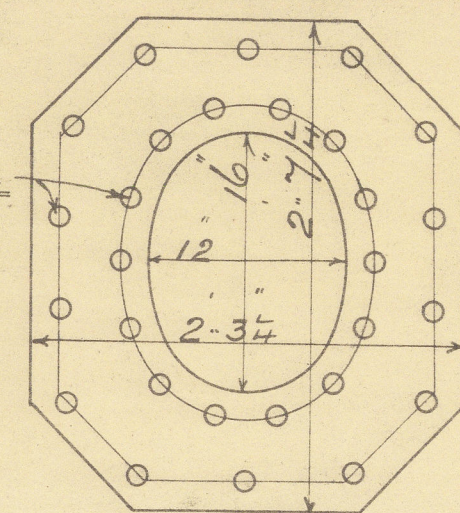
TOP MANHOLE STIFFENING PLATE 1 1/4" THICK

BOILERS.

SCALE 1 INCH TO A FOOT.

180 LBS. WORKING PRESSURE. 2-OFF

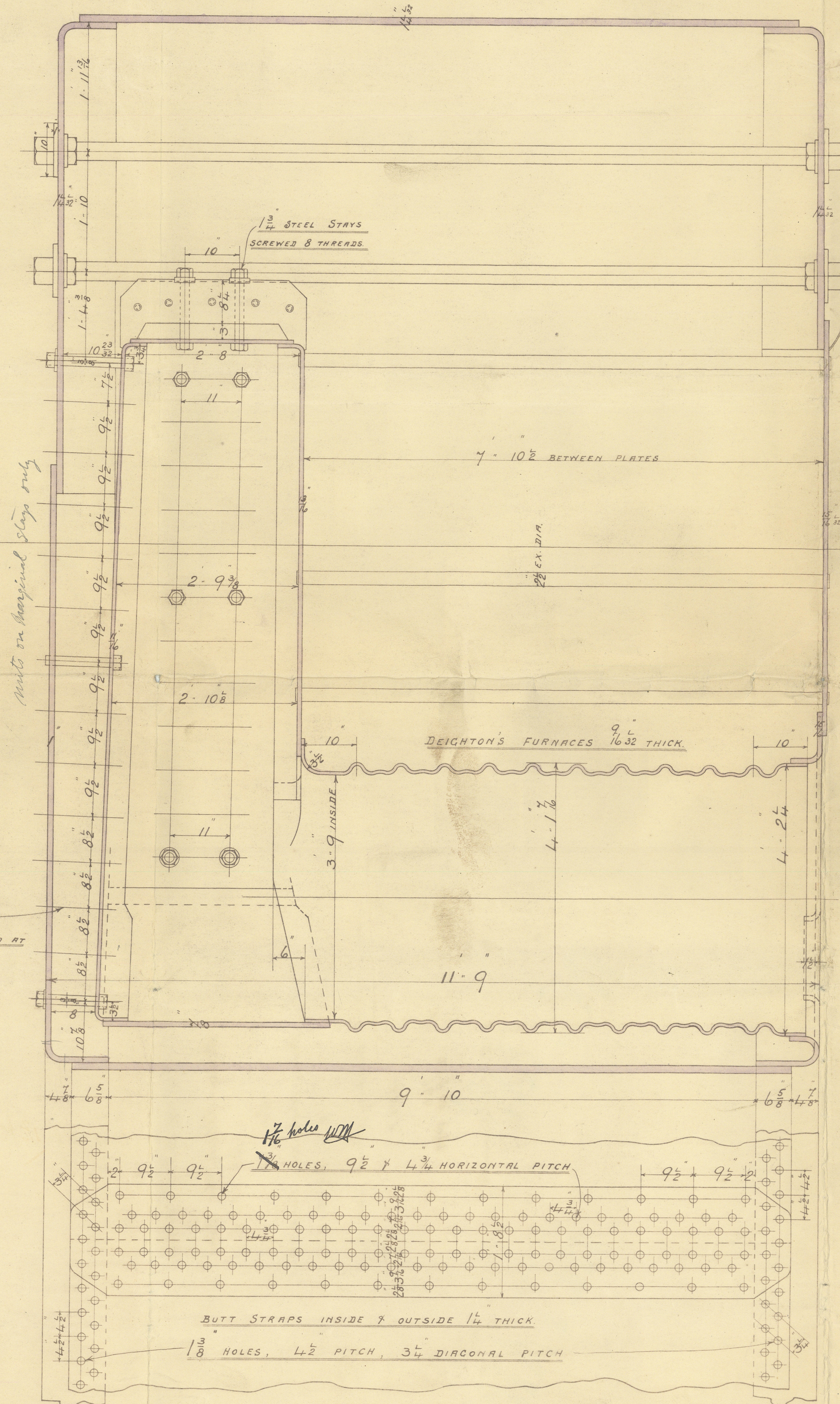
FITTED WITH HOWDEN'S SYSTEM OF FORCED DRAUGHT.



SOLID STEEL STAYS MARKED "A" ARE SCREWED 2 1/2 DIA INTO BACK TUBE PLATES & 2 1/2 DIA INTO FRONT TUBE PLATES WITH A RUT AT OUTSIDE OF EACH END.

STAY TUBES "S" ARE 3/8 THICK SCREWED 2 1/2 DIA INTO BACK TUBE PLATES & "S" 5/16 " 2 3/4 " FRONT " 7/8 THREADS PER INCH.

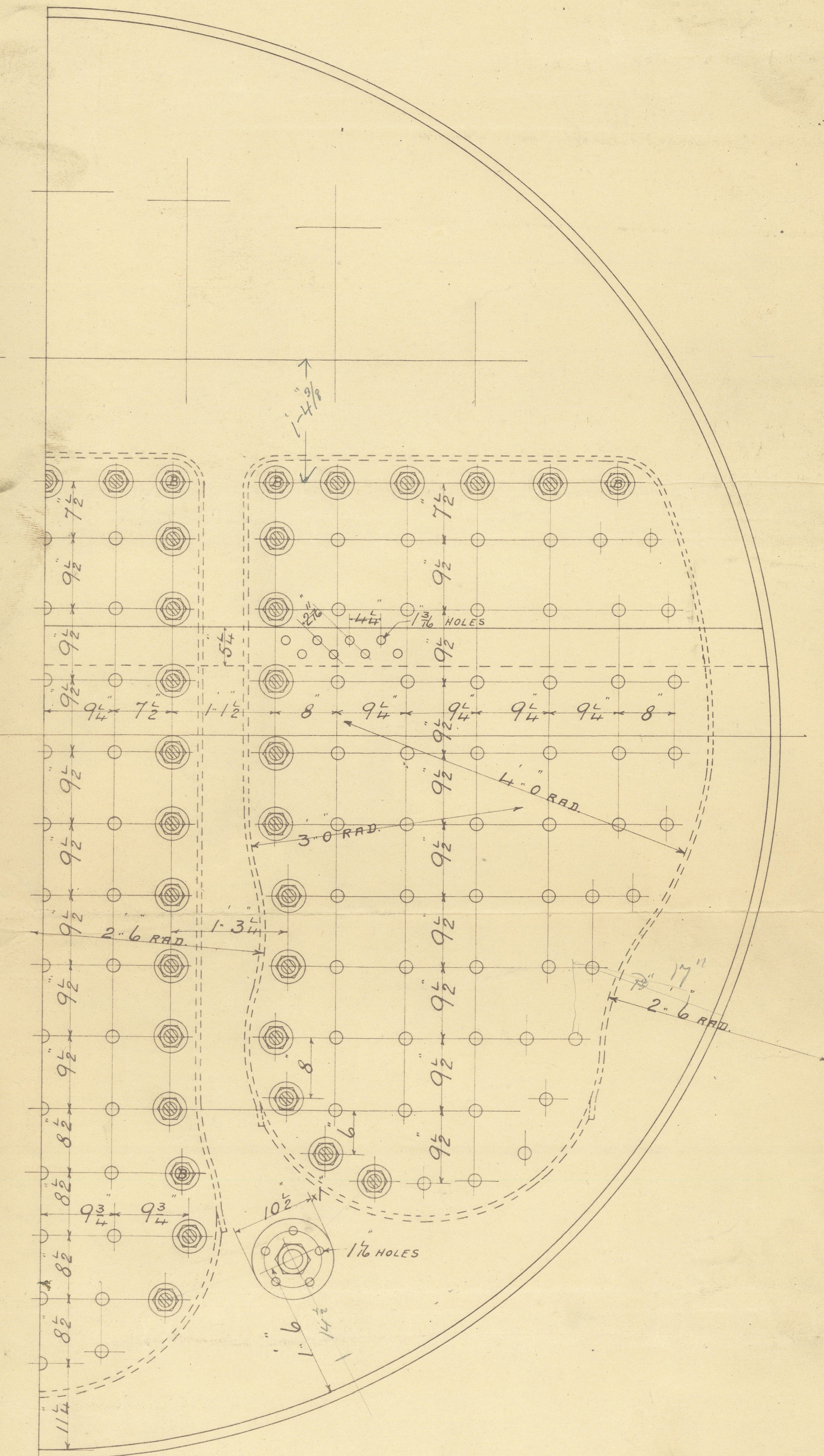
THE ORDINARY TUBES ARE 8 W.G. THICK.



TOTAL HEATING SURFACE IN TWO BOILERS = 6670 SQ FEET

GATE " " = 125

THE MINIMUM TENSILE STRENGTH OF SHELL & GIRDER PLATES IS TAKEN AT 28 TONS PER SQ INCH.



STEEL SCREW STAYS MARKED "B" ARE 2 EX DIA
THUS: 1 1/8 " SCREWED 8 THREADS.
OTHER " ARE 1 3/4 EX DIA



88M
19/3/10
19/3/10

BLAIR & COY., LTD
ENGINEERS,
17 MAR 10
STOCKTON-ON-TRES

© 2020

Lloyd's Register
Foundation

MARINE ENC

March 17th 1910

From BLAIR & CO., Ltd.,
STOCKTON-ON-TEES.

CK & C

To Messrs Lloyd's Engineer Surveyors
Middlesbrough.

Main Boilers
Engines No: 1686.

B 1412

Lloyd's Register
W752 - 0214
Foundation

2 Main Boilers

Messrs Blair & Co Lim^d.

No 1686

for

Messrs Richardson Buck & Co's

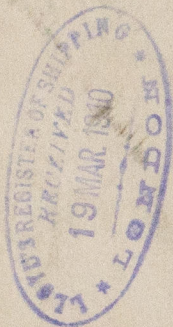
S. S. No 612

Working Press 180 lbs.

No. 4503
LLOYD'S TEST
360 lbs.
23-9-10-WM

S. S. "Watermouth"

Indt Rpt No 6609



RETAIN

W752 - 0214



© 2020

Lloyd's Register
Foundation