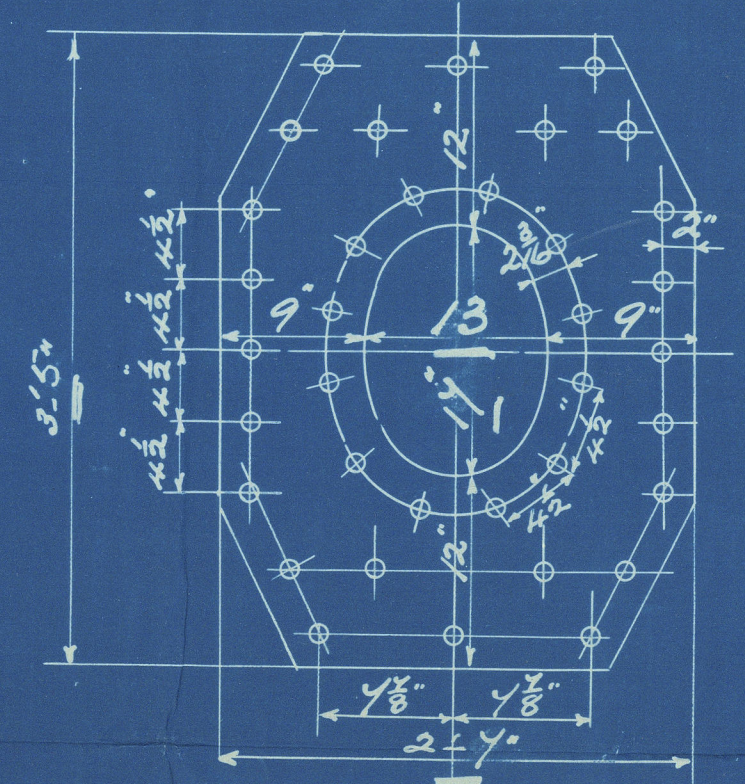


DIAM. OF BOILER 13'-6"
 LENGTH OF DO 10'-6"
 NUMBER OF TUBES 194
 LENGTH OF DO 6'-8" between plates
 DIAM. OF DO 3 1/2" AREA THRU TUBES 10.3 sq ft.
 HEATING SURFACE IN TUBES 1180 sq ft.
 TOTAL HEATING SURFACE 1485 sq ft.
 FIRE BAR SURFACE 5'-6" bars 41.69 sq ft.
 DIAM. OF SAFETY VALVES
 CUBIC FEET OF STEAM SPACE 292 cu ft.
 WORKING PRESSURE 180 lbs LLOYDS

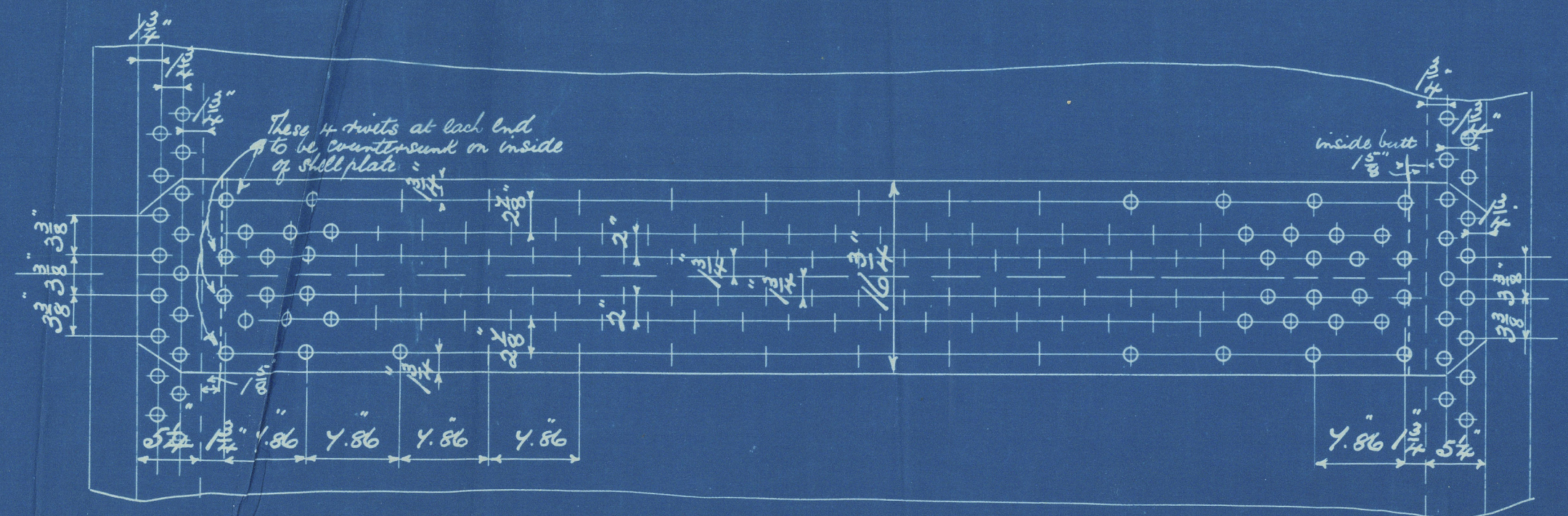
14/12/08

Doubling plate 1 1/2" thick
 Rivets 1 1/2" holes 1 1/2"
 Fitting outside shell with short axis
 longitudinally



Longitudinal Seams 3 1/2" rivet
 1/2 plate = 6.5
 1/2 rivet = 4.8
 Longitudinal Seams 4.86 rivet
 1/2 plate = 85.6
 1/2 rivet = 85.4

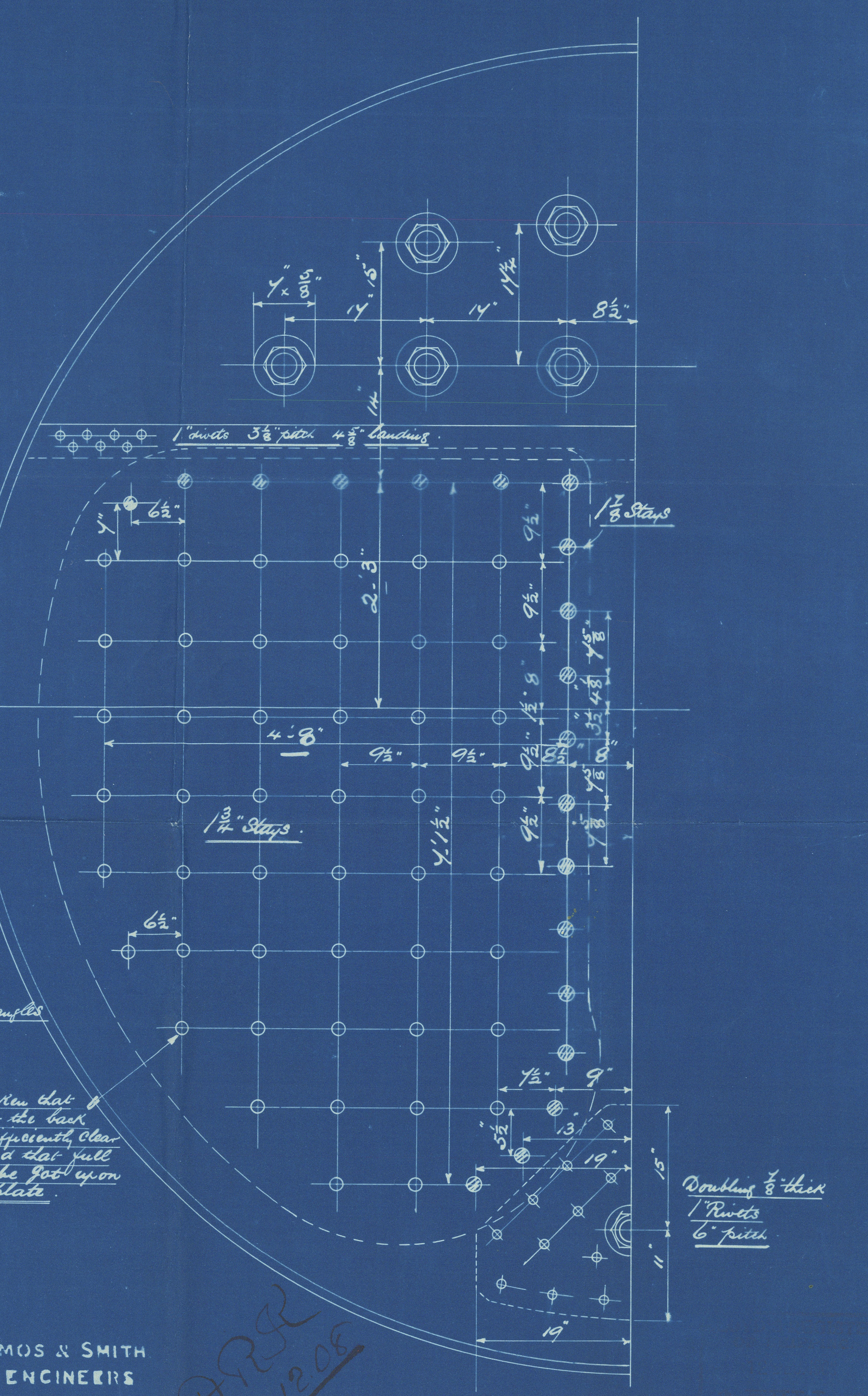
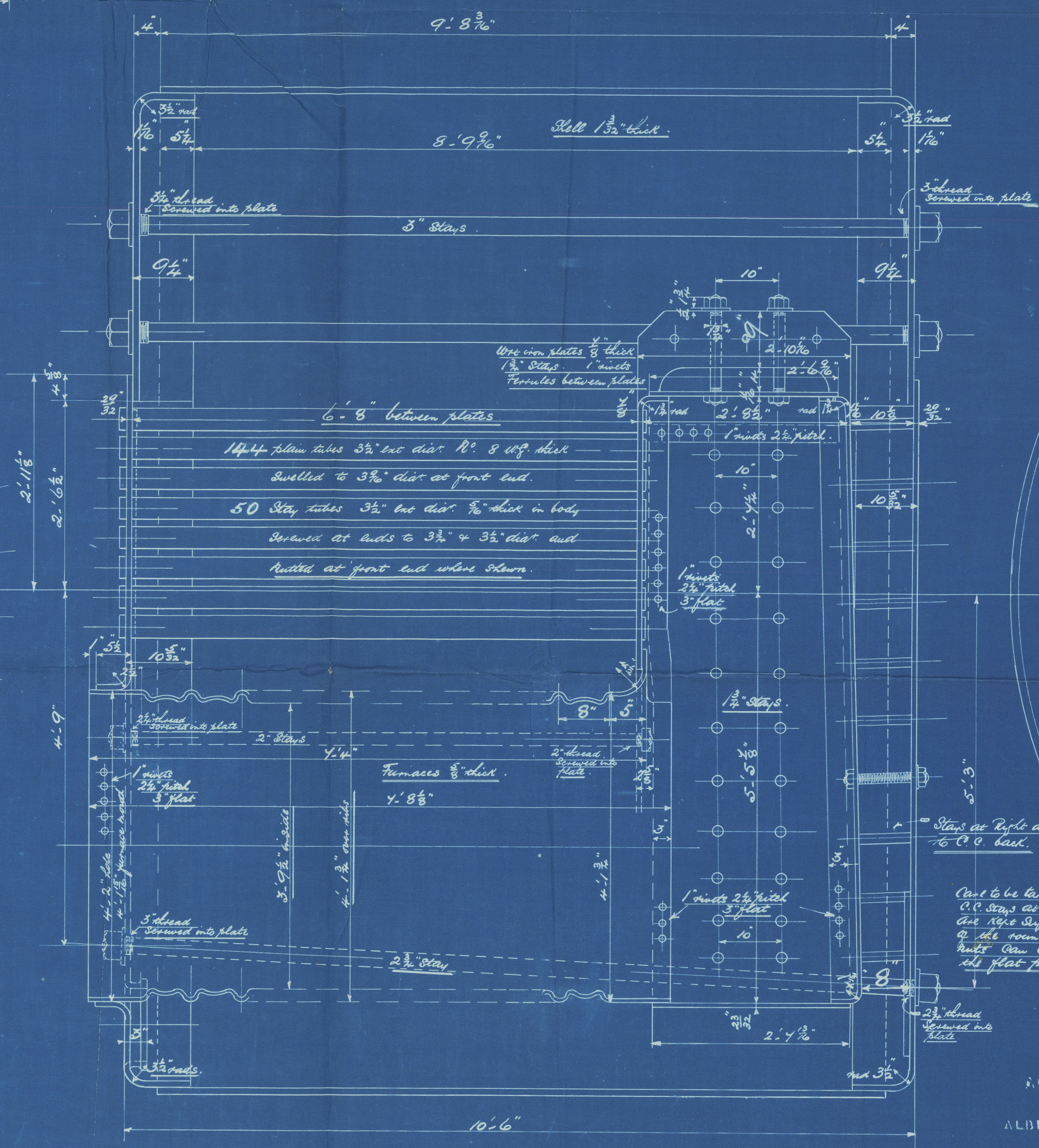
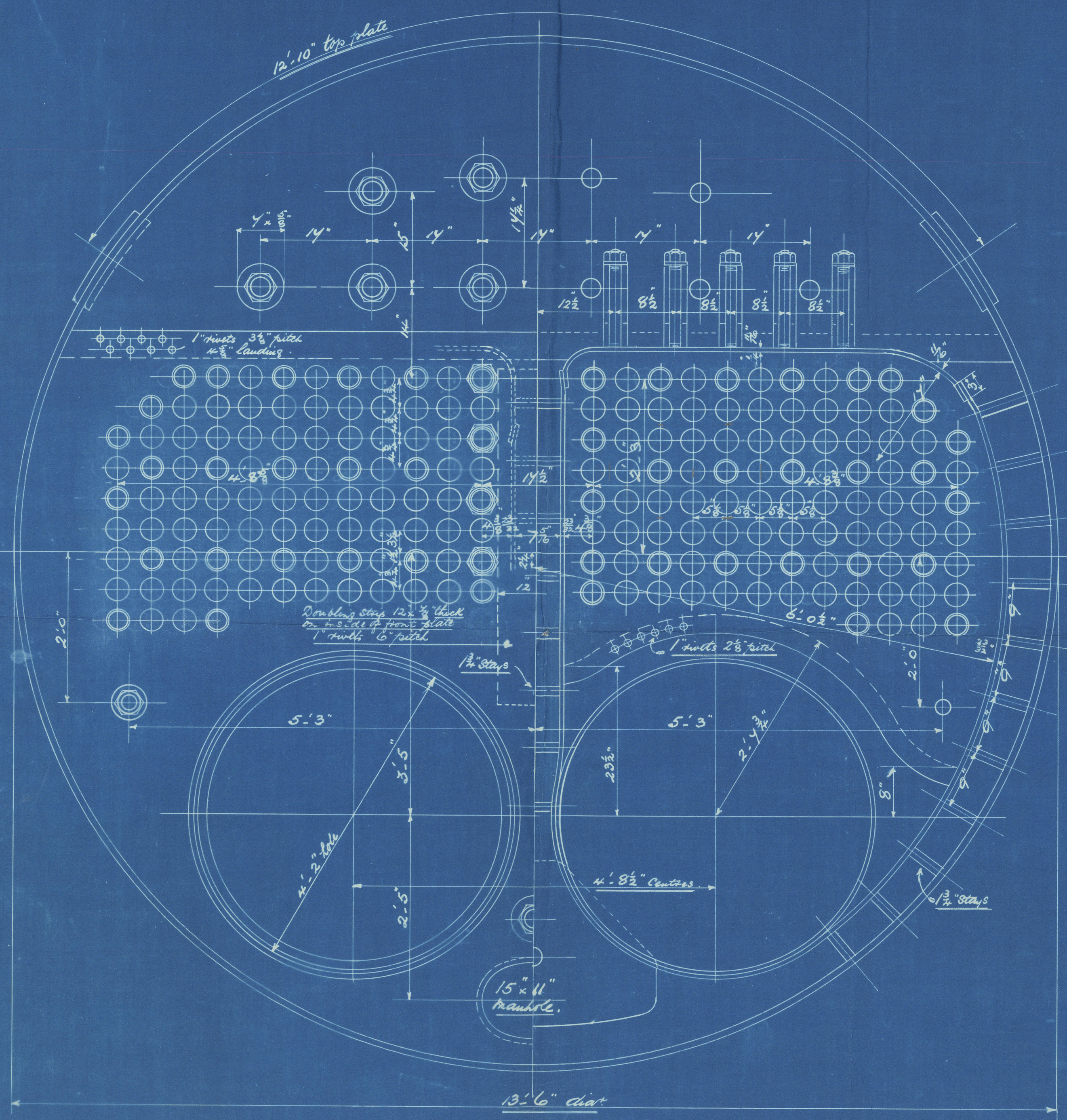
Double butt straps 1 1/2" thick outside 1" thick inside
 All rivets in shell 1 1/2" dia. Holes 1 1/2" dia.
 Parallel Seamed Shell plates & butt straps 28 to 32 lbs sq inch.



Note: The plates, rivets & stays of steel by the Siemens-Martin process
 All holes drilled throughout the boiler those in shell after the plates are bent
 All flanged plates to be annealed after the plates are bent
 Stays are not to be welded
 Tubes are of iron.
 C.C. under plates are of iron.
 The combustion chamber stays are screwed into both plates and fitted with a
 nut at each end. Washers on outside of shell only, none inside C.C.

Particulars of Stayings.

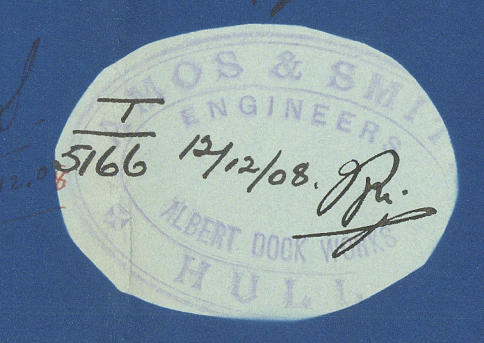
Stays	Dia.	No. of stays per inch	Area at bottom of thread
Steam space stays	3"	6	6.10 sq in
Tube plate	2"	8	2.60 "
Bottom	2 3/4"	6	5.055 "
C.C. stays	1 3/8"	10	2.066 "
"	1 1/8"	10	2.394 "
Stay tubes	3 1/2"	9	2.364 "



AMOS & SMITH
 ENGINEERS
 ALBERT DOCKWORKS
 HULL

STEEL BOILER N^o 1569

Revised Copy.



TITLE Steel boiler
 FOR WHOM New Consolidated S.F.C. Ltd
 DATE 4/12/08
 ORDER R^o 1569
 IF MADE
 SCALE 1" = 1 foot
 Lloyd's Register
 W752-0064

10221

© 2020
From AMOS & SMITH, HULL.

Enclosure for

Lloyds Surveyors, Hull

W752-0067 $\frac{2}{2}$

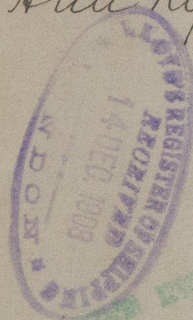
Amended Plan

Amos Smith

Boiler No 1569

Working pressure 180 lb

s/s Claudin's
Hull Report No. 21.076



RETAIN



© 2020

Lloyd's Register
Foundation

WT52 - 0067 1/2