

## STEEL BOILERS № 736

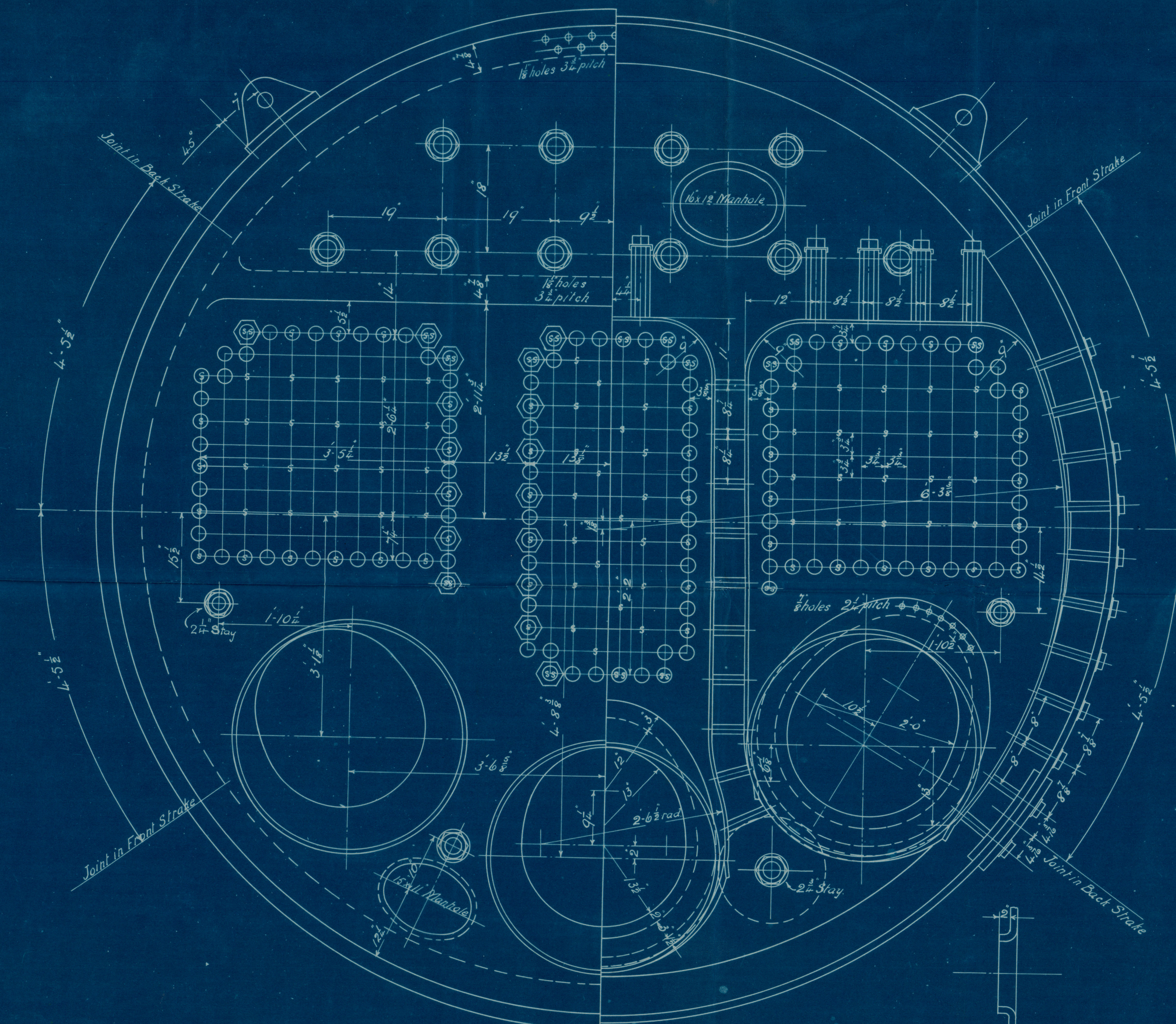
WORKING PRESSURE = 180 LBS TO LLOYDS

- TO BE FITTED WITH HOWDEN'S SYSTEM OF FORCED DRAUGHT.

-2 BOILERS

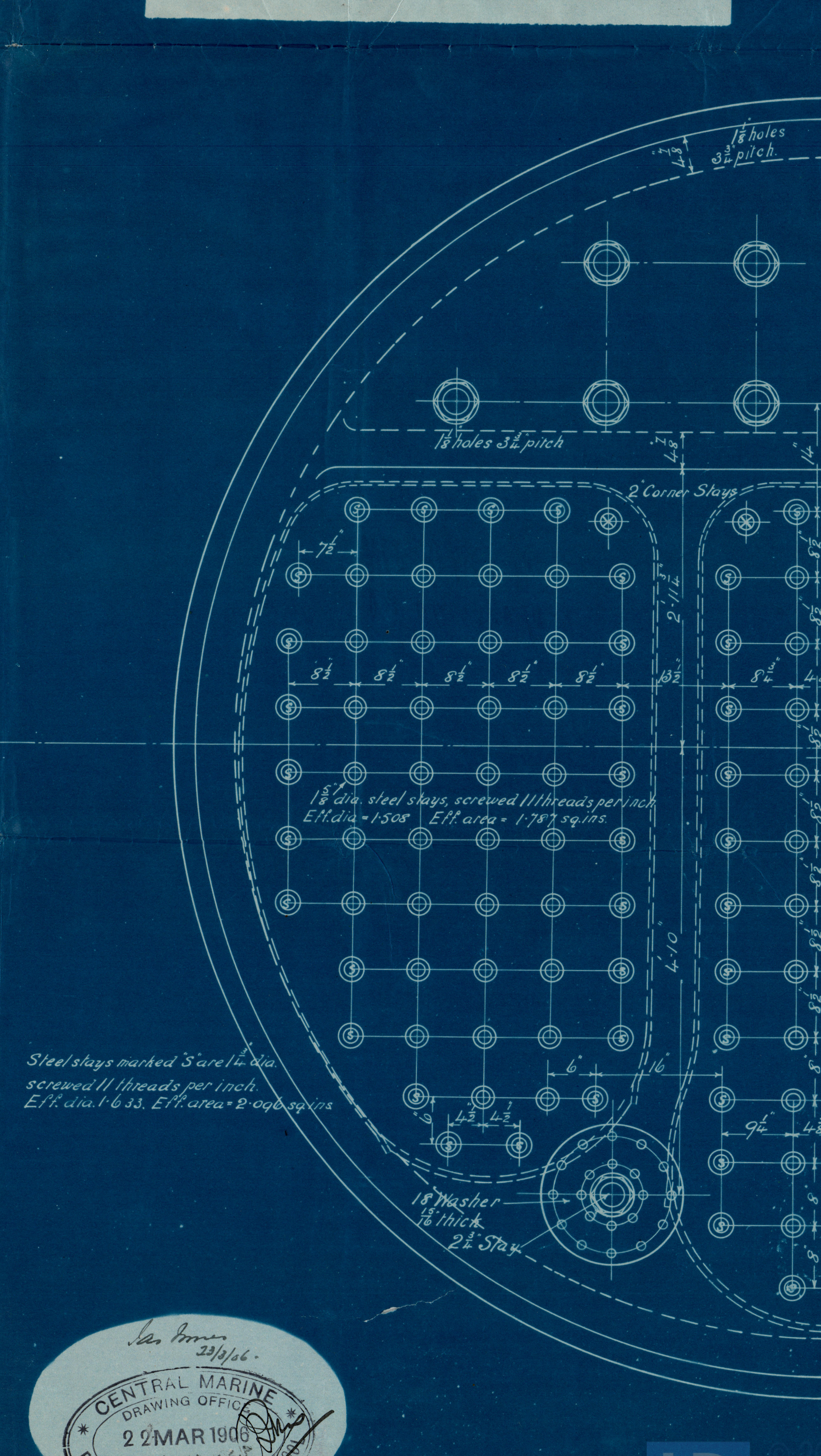
Shell plates to have a tensile strength of	27 to 30 tons
Butt Straps . . . . .	27 to 32 tons
Main Stays . . . . .	27 to 32 tons
Other plates & stays . . . . .	26 to 30 tons

Particulars of 2 Boilers		
Heating surface of Tubes		4000 sq ft
" " " Furnaces		240 "
" " " Comb. Chambr.		378 "
" " " Back Loke Plate		84 "
" " " <del>Back Loke Plate</del>		
Total Heating Surface		4702 "



№ 736.

Section of Bottom Manhole.



Steel stays marked "S" are  $1\frac{1}{4}$ " dia.  
screwed 11 threads per inch.  
E<sub>1</sub>" dia. 1-633, E<sub>1</sub>" area = 2.096 sq. ins.

Las Palmeras  
23/3/66.

CENTRAL MARINE  
DRAWING OFFICE  
22 MAR 1966  
No. 21243  
ENGINE WORKS WEST HART



Central No 736

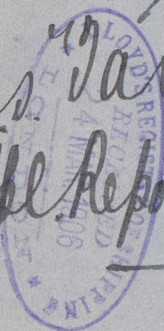
180 lbs to P

two Antennae

In

Stays No 736.

as "Tangistan"  
Hpl. Report No. 13100.



RETAIN



© 2021

Lloyd's Register  
Foundation

W751-0128