



13.2.14

MIDSHIP SECTION

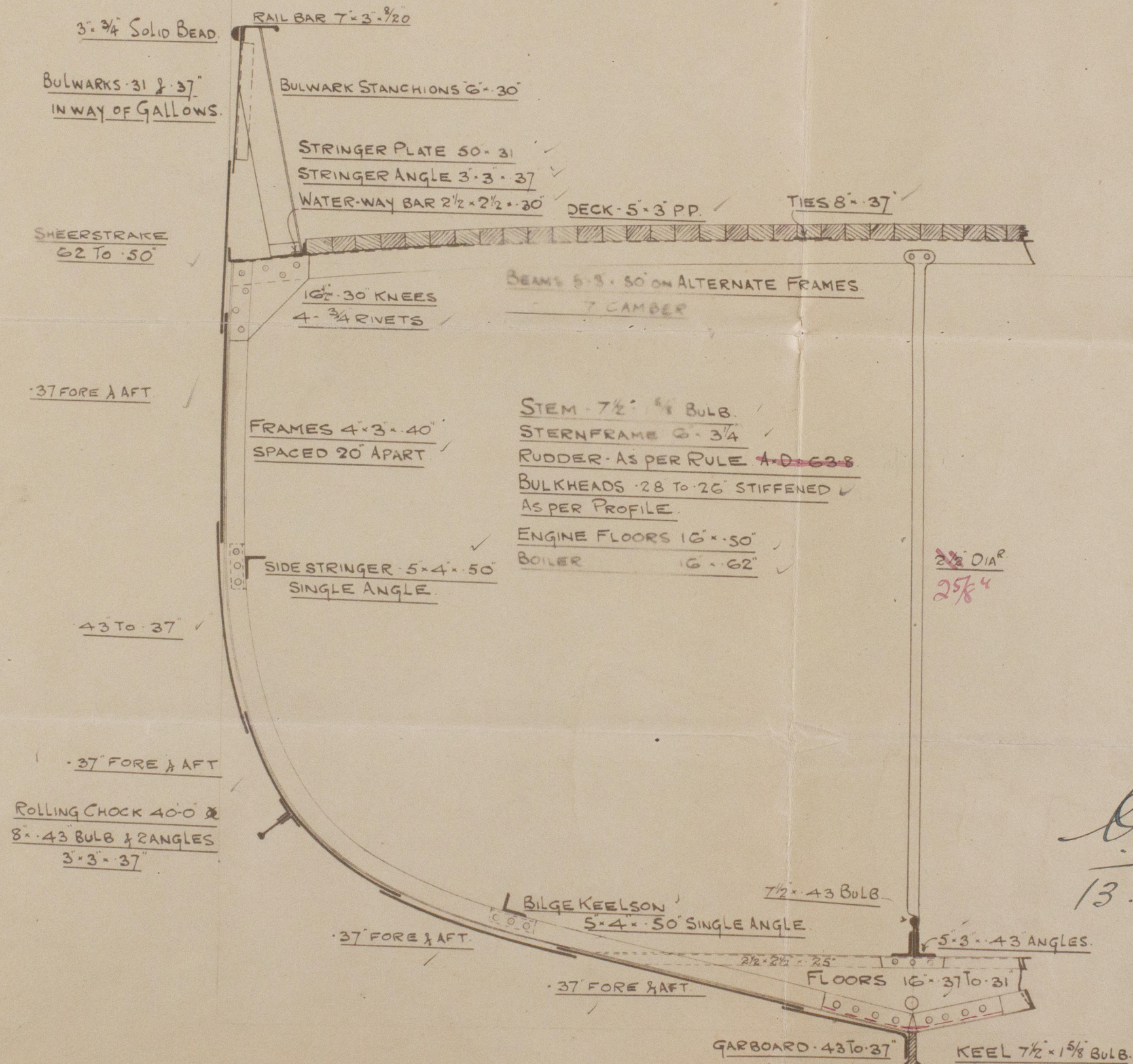
STEEL SCREW TRAWLERS

N^{OS} 601-2

DIM^NS 136'-8" B.P. x 23'-9" EXT x 13'-0" MLD.

SCALE 2 INCH

TO CLASS 100A1 STEAM TRAWLER.
DECK PLATED OVER IN WAY OF MACHINERY CASING
AS PREVIOUSLY APPROVED



PLAN No. 3920
FOR ENCLOSURE TO
Messrs Lloyd's Surveyor
Hull FROM
COCHRANE & SONS, LTD
SHIPBUILDERS, SE
DATE 9/2/14

NUMERALS

B+D	36.62	✓
L (B+D)	5004.48	✓

PROPORTIONS

10	10.51	✓
10	5.78	

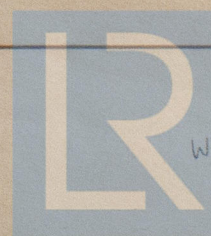
EQUIPMENT

1 ANCHOR	6 CWTSEX STOCK	✓
1 "	5 1/2 "	✓
1 "	3 "	✓
120 FATHOMS	1 1/2 STUDLINK CABLE	✓
60	6 HAWSER	✓
60	5 WARP	✓

BB
13.2.14.

RIVETING

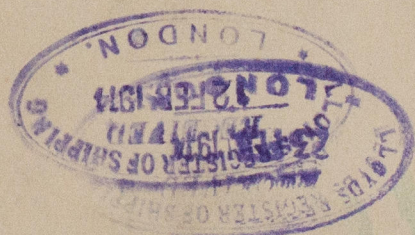
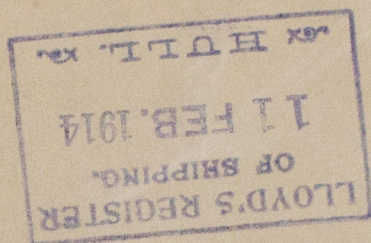
BUTTS OF SHELL PLATING OVERLAPPED &
DOUBLE RIVETED EXCEPT GARBOARD AND
SHEER STRAKE WHICH ARE TO BE STRAPPED
AND DOUBLE RIVETED LANDINGS DOUBLE
RIVETED. BULWARKS STRAPPED & SINGLE RIVETED



© 2021

Lloyd's Register
Foundation

W351-0043



s/s Thomas Butler R/L No 27792
" Lord Osman - - 27799

- No. 601 + 602 -

Lockhart & Sons Ltd.

Middlebury & Son -



© 2021

Lloyd's Register
Foundation