

30/12/07

DIMENSIONS.	
LENGTH OF FIRE BARS	34
AREA OF FIRE CRATE	
DIAM OF TUBES OUTSIDE	34
LENGTH OF TUBES	over plates 6' 7 1/2"
Nº OF TUBES	202
SURFACE OF TUBES	1107
TOTAL HEATING SURFACE	1415
WORKING PRESSURE	180

### Particulars of riveting

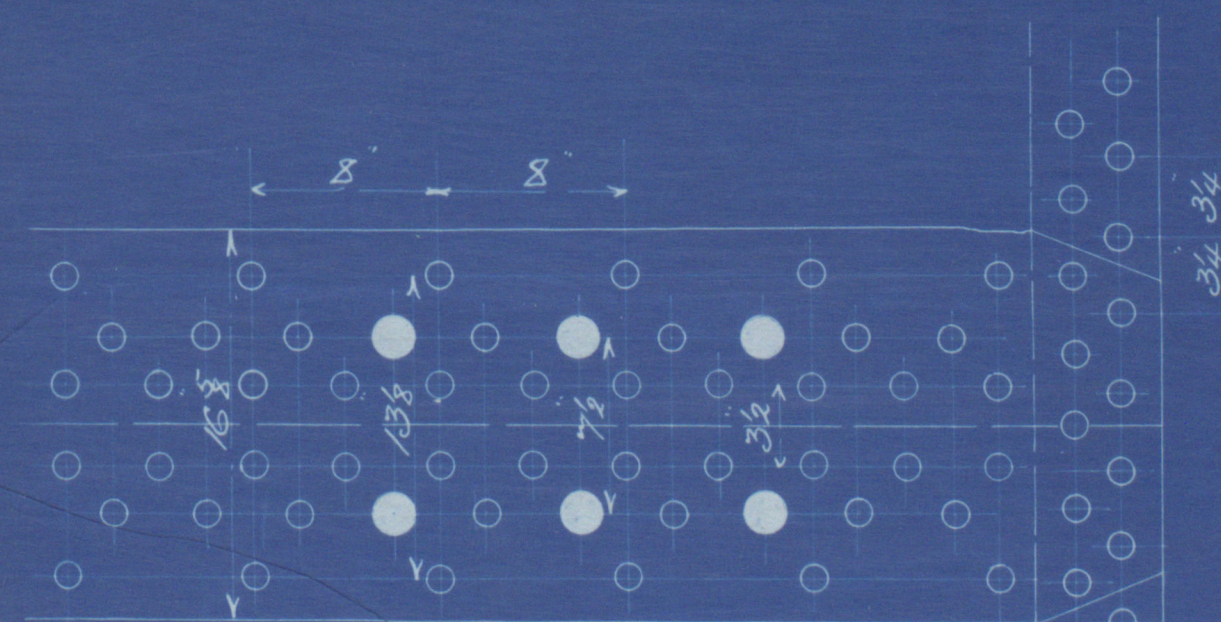
Shell :- Longitudinal seams to be triple riveted double butt straps  
 tubes drilled 1 1/2" dia 8 pitch  
 Circumferential seams to be double riveted 4 1/2 joints  
 tubes drilled 1 1/2" dia 8 pitch

Furnaces :- Front ends to be half double riveted, Bottom half single riveted  
 Back ends single riveted

Comb<sup>n</sup> Chan<sup>rs</sup> :- To be double riveted along bottom & up sides to  
 level of furnace tops, remainder single riveted

End Plates :- Cross seams to be double riveted

transverse in shell 16 x 12  
 and inside with 1 1/2" plate  
 7' 6" long

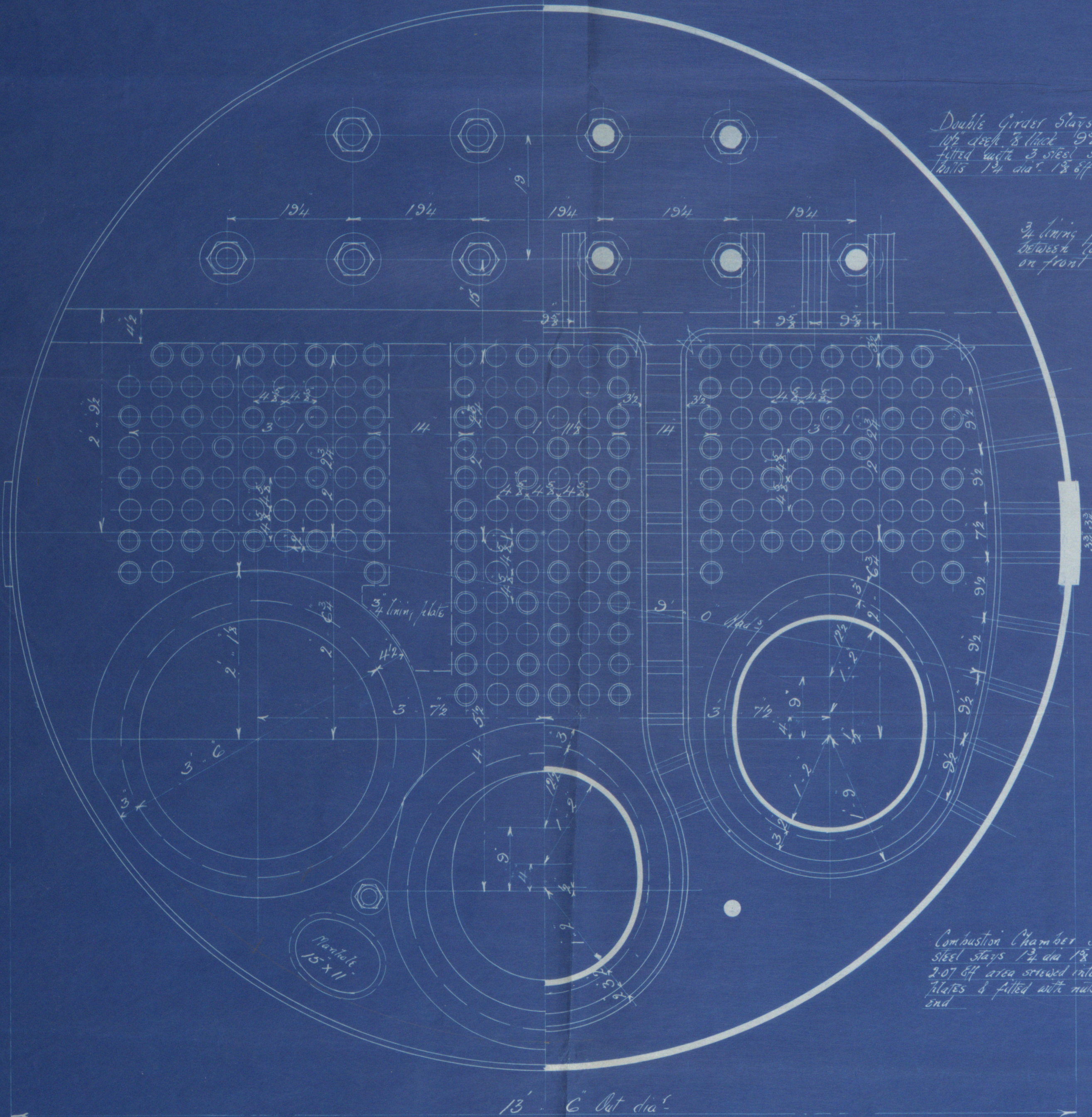


Percent of Joint

Plate 85-5%

Welds 80-0%

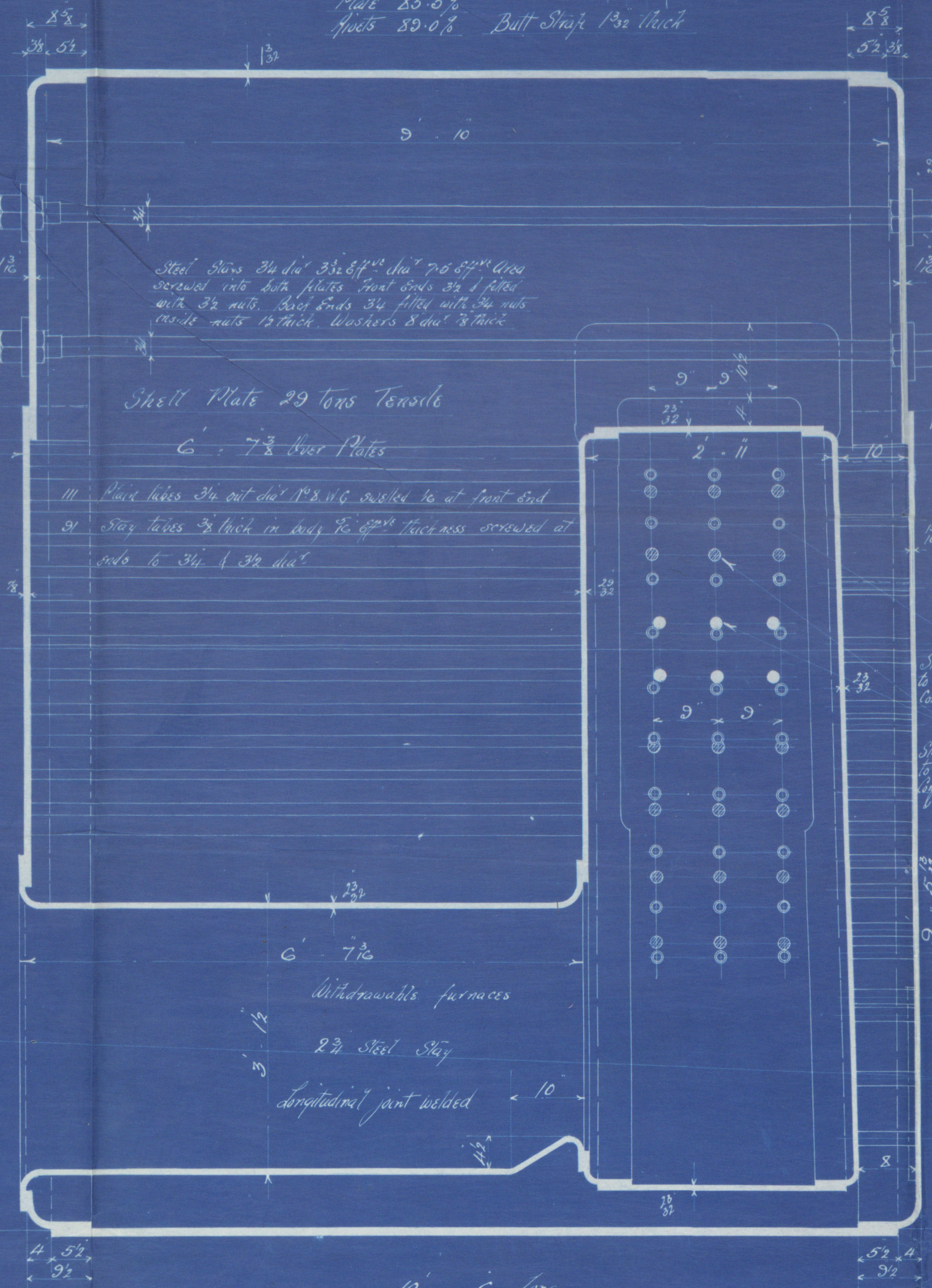
Butt Strap 1 1/2" thick



Double Girder Stays of Iron  
 1 1/2" dia 8 pitch 9 1/2" pitch  
 fitted with 3 steel staybolts  
 1 1/2" dia 18 off 8 pitch

3/4" lining plate fitted  
 between tube nests  
 on front tube plate

Combustion Chamber Stays  
 steel stays 1 1/2" dia 18 off dia  
 207 sq area spread into 4 1/2"  
 stays & filled with nuts at each  
 end



Shell Plate 29 tons Tensile

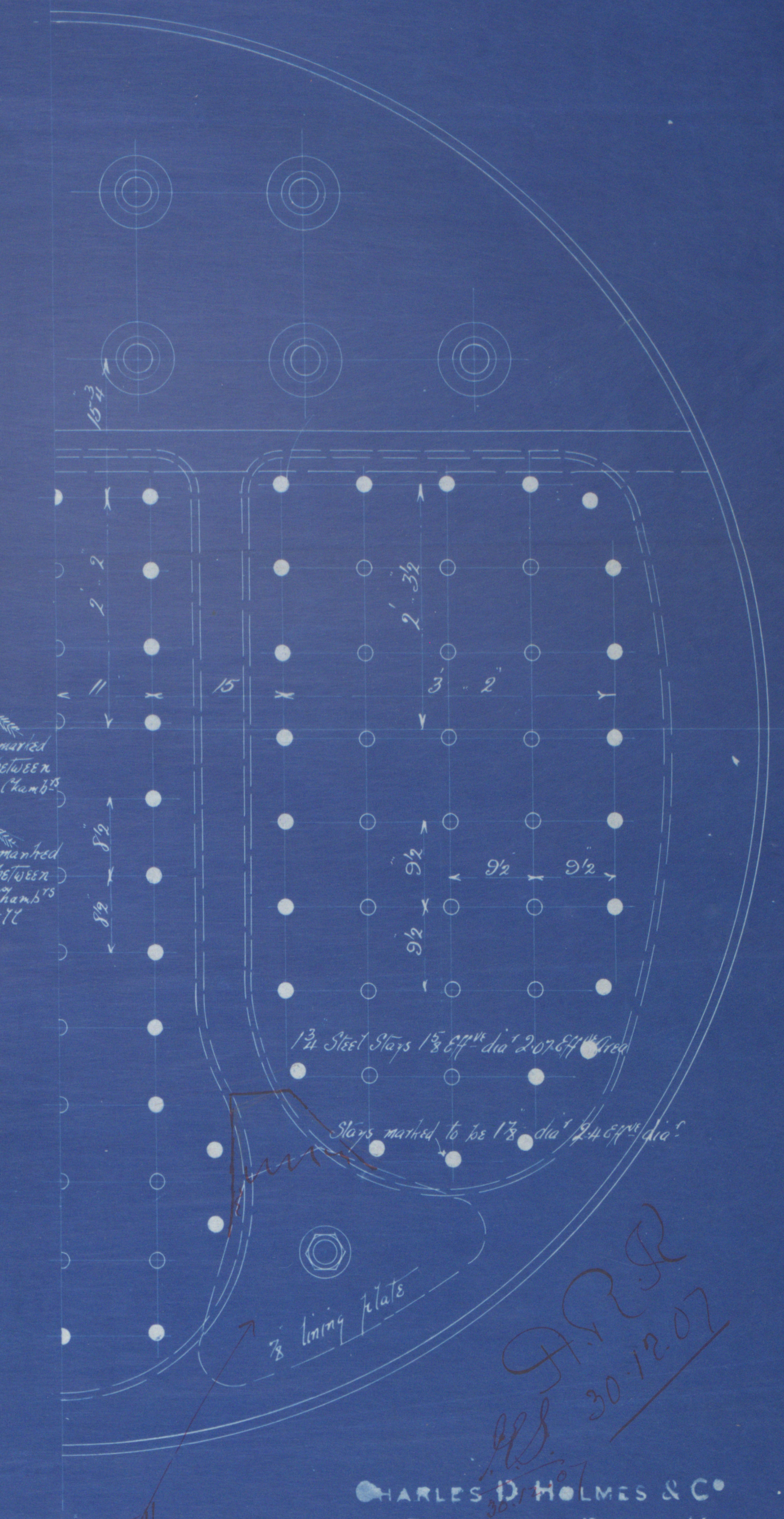
6' 7 1/2" over Plates

III Plate tubes 3/4" out dia 1 1/2" dia 8 pitch welded to at front end  
 9" stay tubes 3/4" thick in body to 8" off thickness screwed at  
 ends to 3 1/4" & 3 1/2" dia

Withdrawable furnaces

2 1/2" steel stay

Longitudinal joint welded



1 1/2" steel stays 1 1/2" dia 18 off 8 pitch

Stays marked to be 1 1/2" dia 24 off 8 pitch

3/4" lining plate

CHARLES D. HOLMES & CO  
 ENGINEERS & BOILER MAKERS  
 Dec 25<sup>th</sup> HULL 1907

BOILER Nº 857

LLOYD'S REGISTER  
 OF SHIPPING  
 27 DEC 1907  
 HULL

Lloyd's Register  
 Foundation





Messrs.  
Charles D. Holmes & Co  
Boiler No 857



180 lbs

of Xerxes  
Hull Report No. 20.166



© 2020

Lloyd's Register  
Foundation