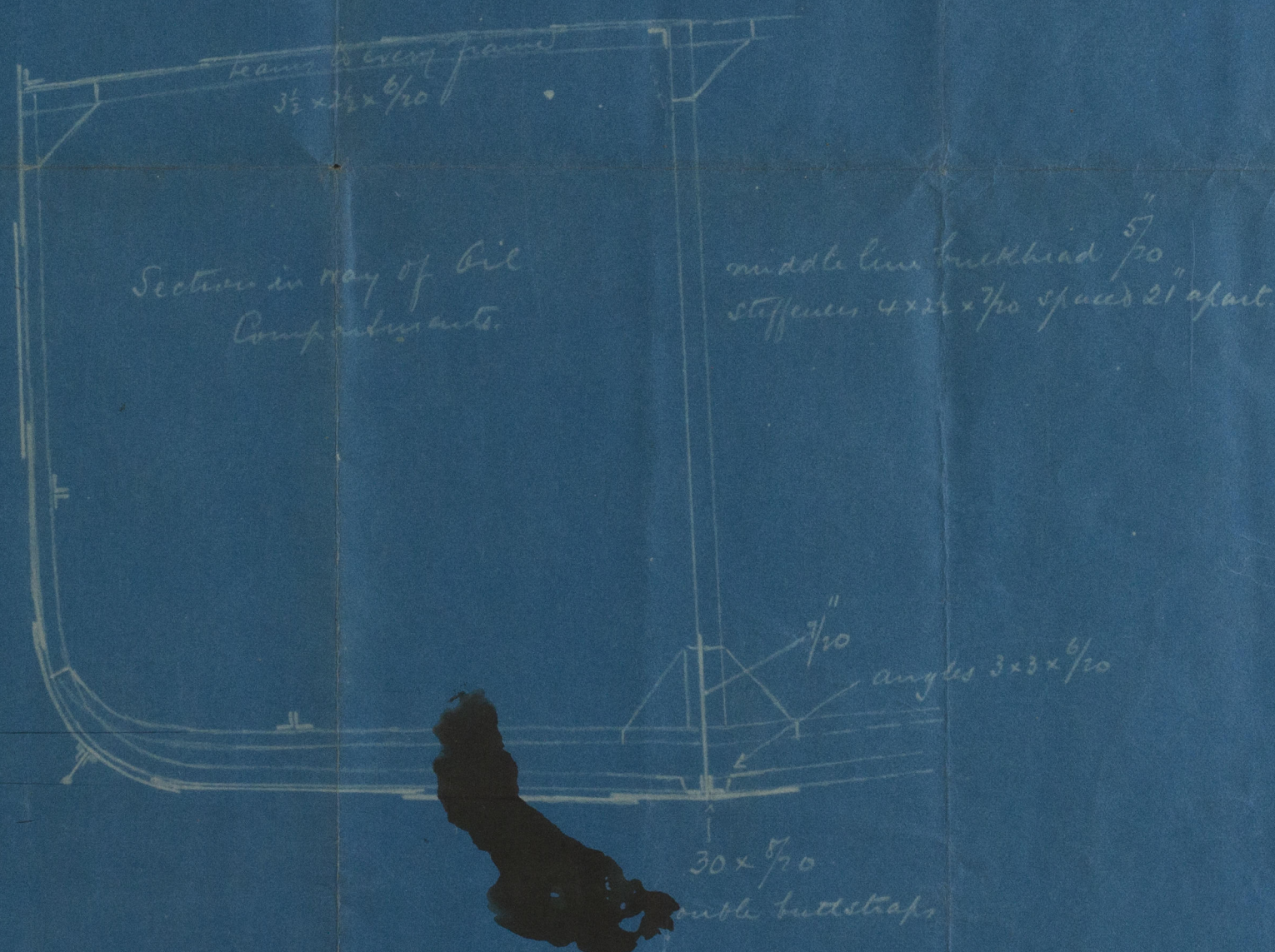


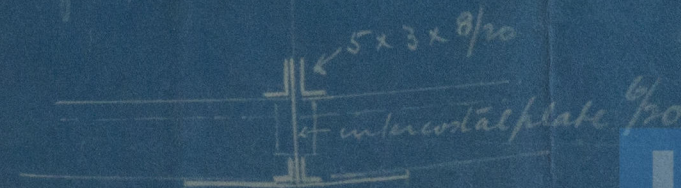
4-3-03

N^o 2

H Parry & Son
Lisbon



Centre bulkhead forward & aft
of bil compartments

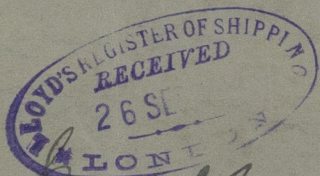


© 1900-20

Lloyd's Register
Foundation

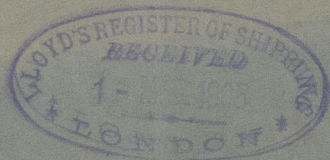
W744-0066

H. Parry, Ton
Amended M.S.



Geo. H. H. H.

Lis. 426



RETAIN



© 2020

Lloyd's Register
Foundation
W744-0066