

N<sup>o</sup> 1

Equipment number 3502-  
Anchors & chains to be tested as required by Rules

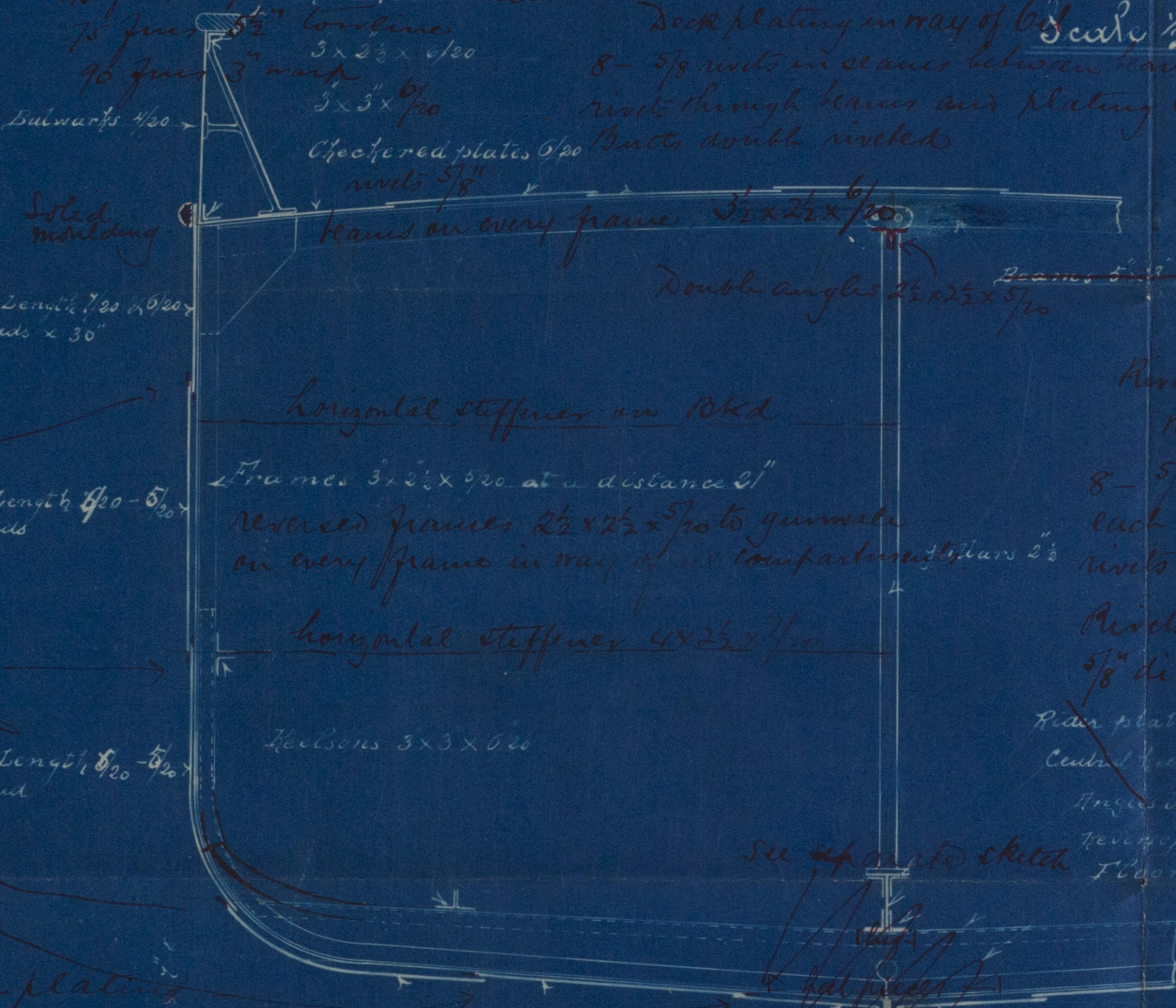
Section indicating sizes of scantlings

1  
2 Breadth 90  
Depth 10 5/8  
1 1/2 17 5/8  
1 1/2 36 8/16  
1 1/2 89 06  
1 1/2 22 83  
1 1/2 4 94 5 8 59  
4 3 03

2 lower anchors 5 Cwt. ex stock  
1 Stream " 1 1/2 " " "  
1 Hedge " 3/4 " " "  
135 fms 13/16 stud chain cable  
45 fms 8/16 stream chain  
75 fms 5/8 wireline  
90 fms 3 wire  
Bulwarks 4/20

Deck plating in way of 6 Scale 1/2 = one foot  
8 - 5/8 rivets in seams between beams  
rivets through beams and plating 6 diameters apart  
rivets 5/8"

Seams of plating double riveted in way of oil compartments

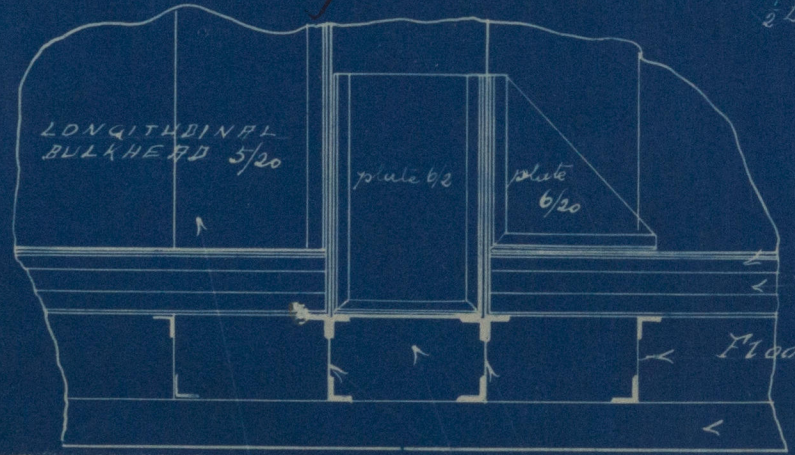


Riveting of outside plating in way of oil compartments  
8 - 5/8 rivets between frames in each row in seams and two rivets through frame at landings  
Rivets through frames & plating 5/8 dia. spaced 6 diam. apart.

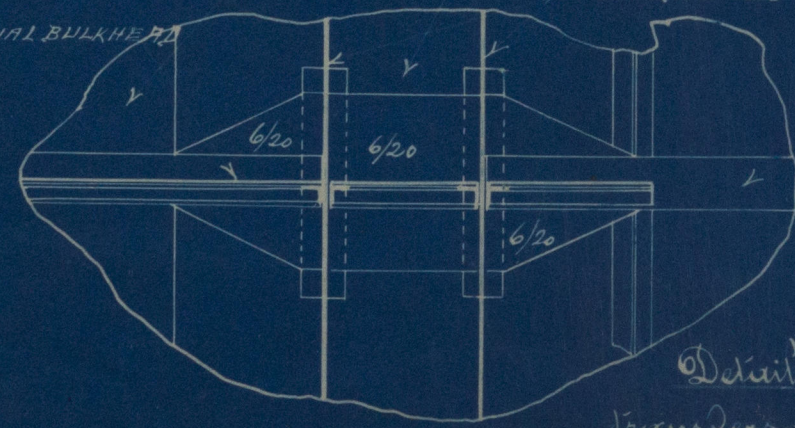
Plating plates 6 1/2 x 7/20  
Central keelson 3 2 x 7/20  
Angles bars 3 x 3 x 5/20  
Reversed frames 2 1/2 x 2 1/2 x 5/20  
Floors 11 1/2 x 5/20 - 6/20 under engine

See separate sketch

Butts of outside plating double riveted throughout



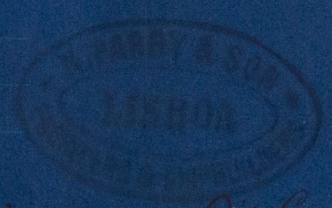
OIL SPACE WATER SPACE  
LONGITUDINAL BULKHEADS 6/20



Detail of connection of centre keelson in the transverse bulkheads of water space, fore and aft.

Plan like submitted

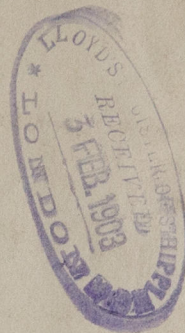
Transverse Bulkheads in way of oil compartments  
Plating 9/20  
Vertical stiffeners 4 x 2 1/2 x 7/20 spaced 21" apart bracketed top and bottom  
Horizontal stiffeners 4 x 2 1/2 x 7/20 bracketed to side of keel and middle line bulkhead  
Middle line bulkhead 5/20, vertical stiffeners 4 x 2 1/2 x 7/20 bracketed top and bottom  
Frame bars to transverse bulkheads 4 x 4 x 7/20  
Single angles double riveted



Lisbon 21-I-03

W 744-0064

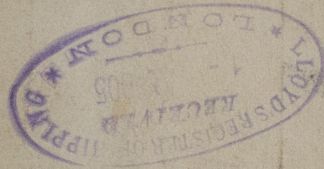




*H. Shipping Section*



*Moskato*  
*Lis #26*



RETAIN



© 2020

Lloyd's Register  
Foundation

W744-0064