

Hand-drawn technical sketches of various types of tubes and stay tubes, showing dimensions and specifications.

1. 398 PLAIN TUBES G-10 LONG N° 8. I.W.G. SWELLED $\frac{1}{8}$ " 3"

2. 30 PLAIN TUBES G-9 LONG N° 8 I.W.G.

3. 98 STAY TUBES G-10 LONG $\frac{5}{16}$ " THICK SWELLED $\frac{1}{4}$ " 3"

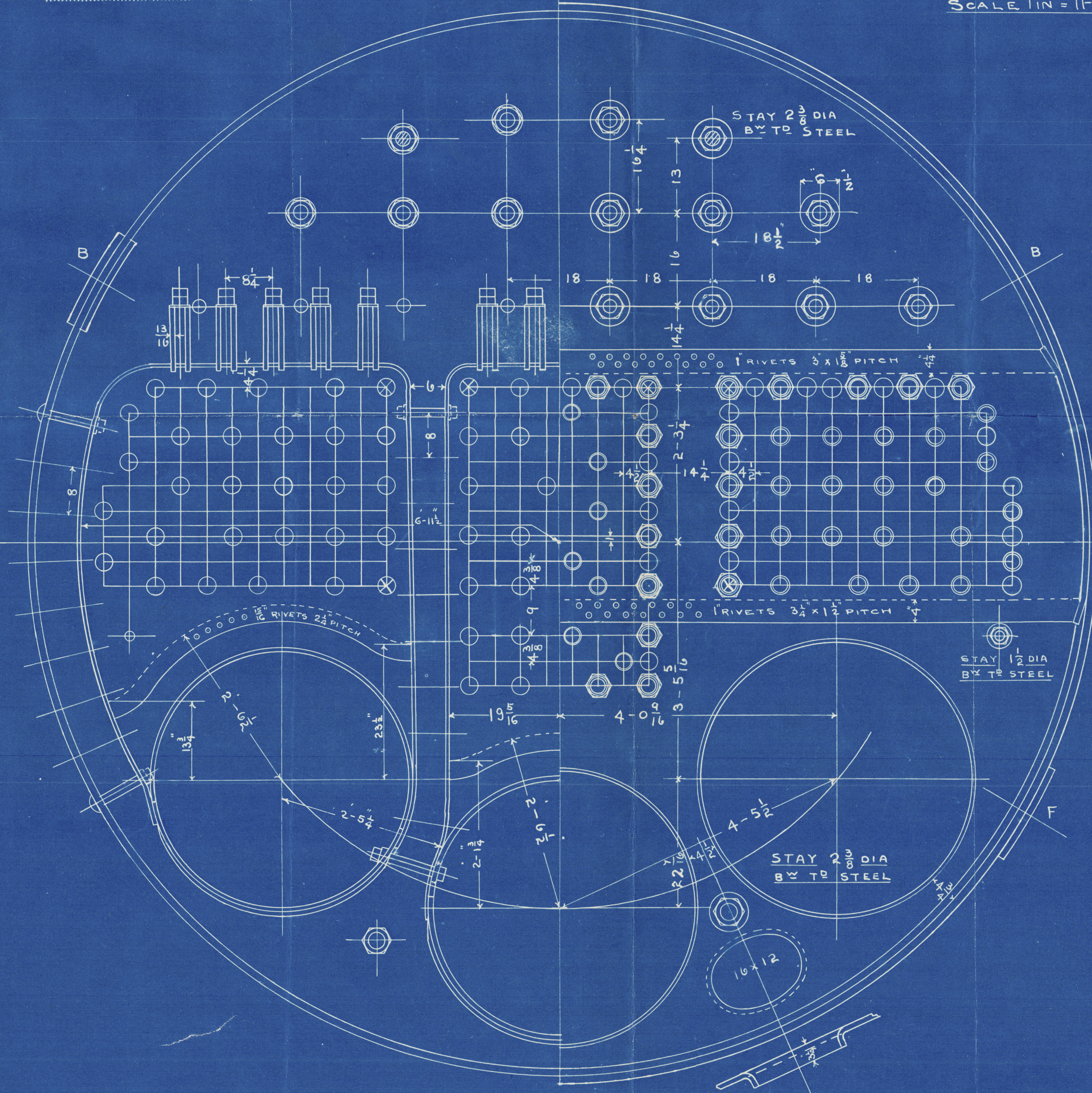
4. 2" 6 STAY TUBES G-9 $\frac{5}{16}$ " THICK 3"

5. 48 STAY TUBES G-11 LONG $\frac{5}{16}$ " THICK 3"

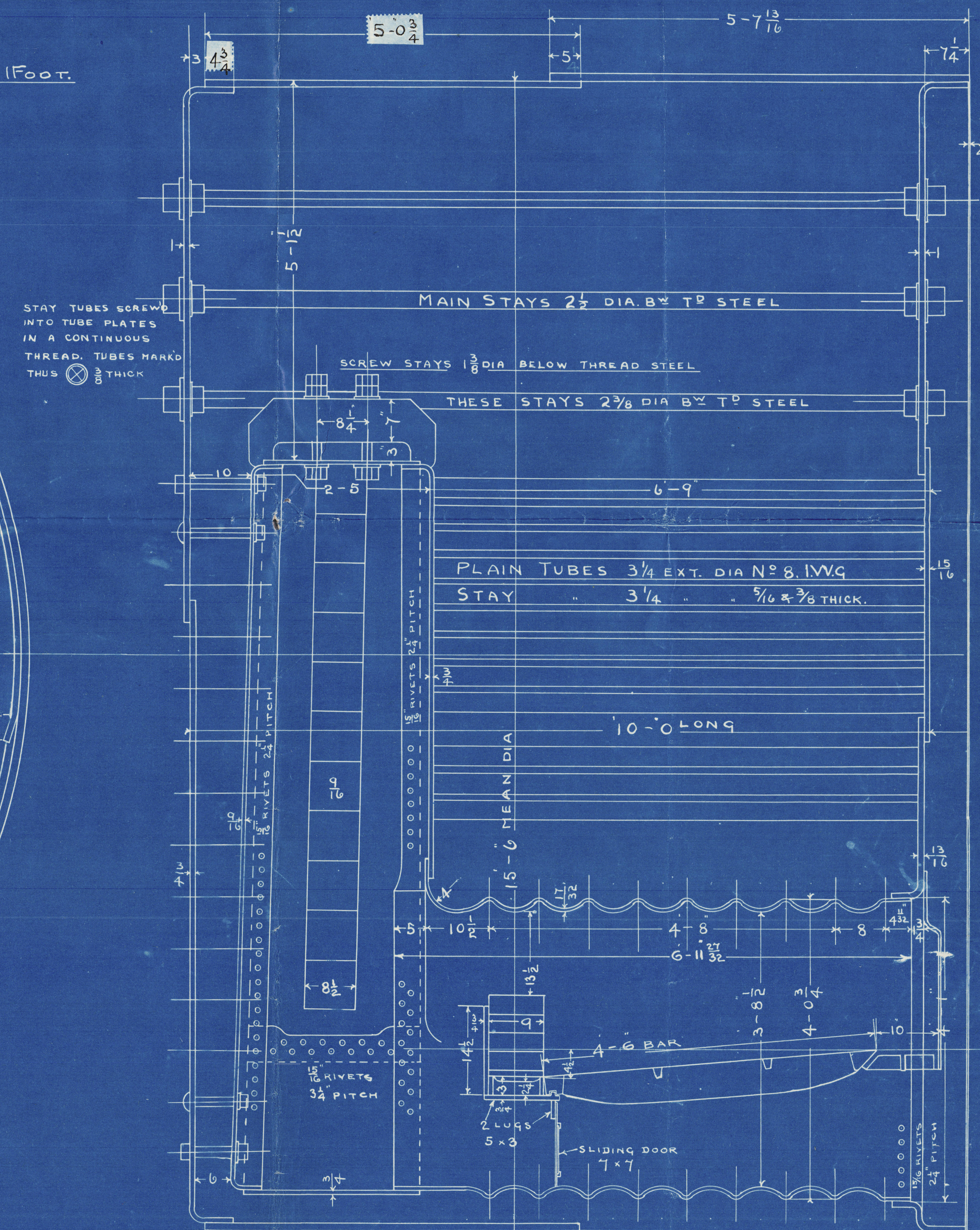
6. 12 " " G-10 " " " " SWELLED $\frac{1}{4}$ " 4"

7. 12 STAY TUBES G-11 LONG $\frac{3}{8}$ " THICK 4"

STAY TUBES SCREWED 9 THREADS PER INCH



SCALE 1 IN = 1 FOOT.



RICHARDSONS, WESTGARTH & CO. LIMITED	
DRAWING OFFICE, HARTLEPOOL.	
NO. OF DRAWING	- - B1193.
NO. OF TRACING	- - 24087.
WHERE SENT	- - Lloyds
EXAMINED BY	- - Rk.
DATE	- - 3rd Oct 1905

BOILERS N° 1202.4.21.2

Plan of Main Boilers
Ironics S B & D D Co

SS Nos 151-2-3-4 45

R Westgarth & Co's Nos 1202-4-21-22

Working pressure 160 lbs

No. 151 - "Inverdon Range"

Hpl. Report No. 13025

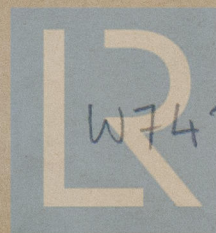
No. 152 - "Ripon"

Hpl. Report No. 13054

No. 154 - "Kenda Fell"

Hpl. Report No. 13125

DETAIN



© 2020

W743

0039

Lloyd's Register
Foundation