

28.3.12.

HOWALDTSWERK
KIEL.
№ 26822 d. 14/3.1
EIGENTHUMS- & VERWIRKLICHUNG
FÜR DEN VERKEHR

CLASS 35 100 A 1 BRIT. LLOYD MATERIAL: STEEL. 410

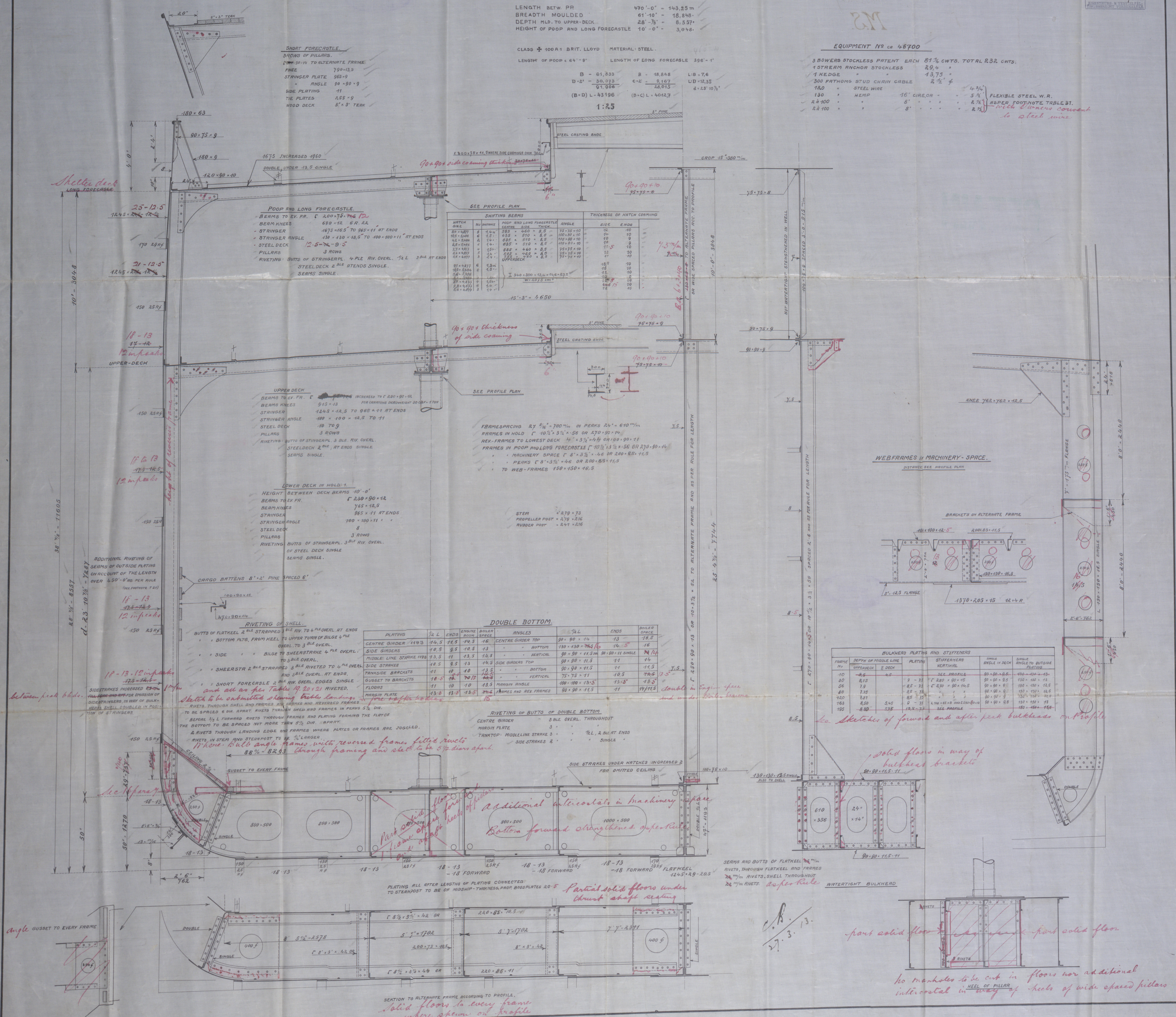
LENGTH OF POOP c 64' - 0" LENGTH OF LONG FORECASTLE 396' - 1"

B = 61,833	B = 18,848	L/B = 7.6
D + 2' = 30,273	C + 2' = 9,187	LD = 12.35
91,906	28,015	d = 2.3' 10"
(B+D) L = 43,196	(B+C) L = 40,42,7	

1:25

3 BOWERS STOCKLESS TANTLE EACH	81 1/2 CWTs.	TOTAL R22 CWTs.
1 STREAM RANCH STOUTLESS	20 1/2 "	
1 KEDGE "	13 7/8 "	
300 FATHOMS STUD CHAIN CABLE	2 1/2 "	
120 " STEEL WIRE		4 3/4 "
130 " HEMP	16" GIRE.	5 1/2 "
R 100 "	8' "	8 1/2 "
R 100 "	8' "	8 1/2 "

FLEXIBLE STEEL W.R.
 ASPER FOOTNOTE TABLE ST.
with dimensions converted



Transverse Plan

HAMBURG Report No 14138

Heimatschutz Nr 583

Heimatschutz Letter 18. 3. 13

"Frostburg"

M.S.

EQUIPMENT IN CR #6700

2 BOWERS STOCKLESS PATENT 8 1/2 CWT. TOTAL 835 CWT.

1 STEAM ANCHOR STOCKLESS

1 KEDGE

300 FATHOMS STUD CHAIN CABLE

150 " STEEL WIRE

150 "

HEMP

2 1/2 100 "

2 1/2 100 "

FLEXIBLE STEEL W.R.

RESPER FOOTNOTE TABLE 27.

RETAIN



© 2020

Lloyd's Register
Foundation

W730-0151