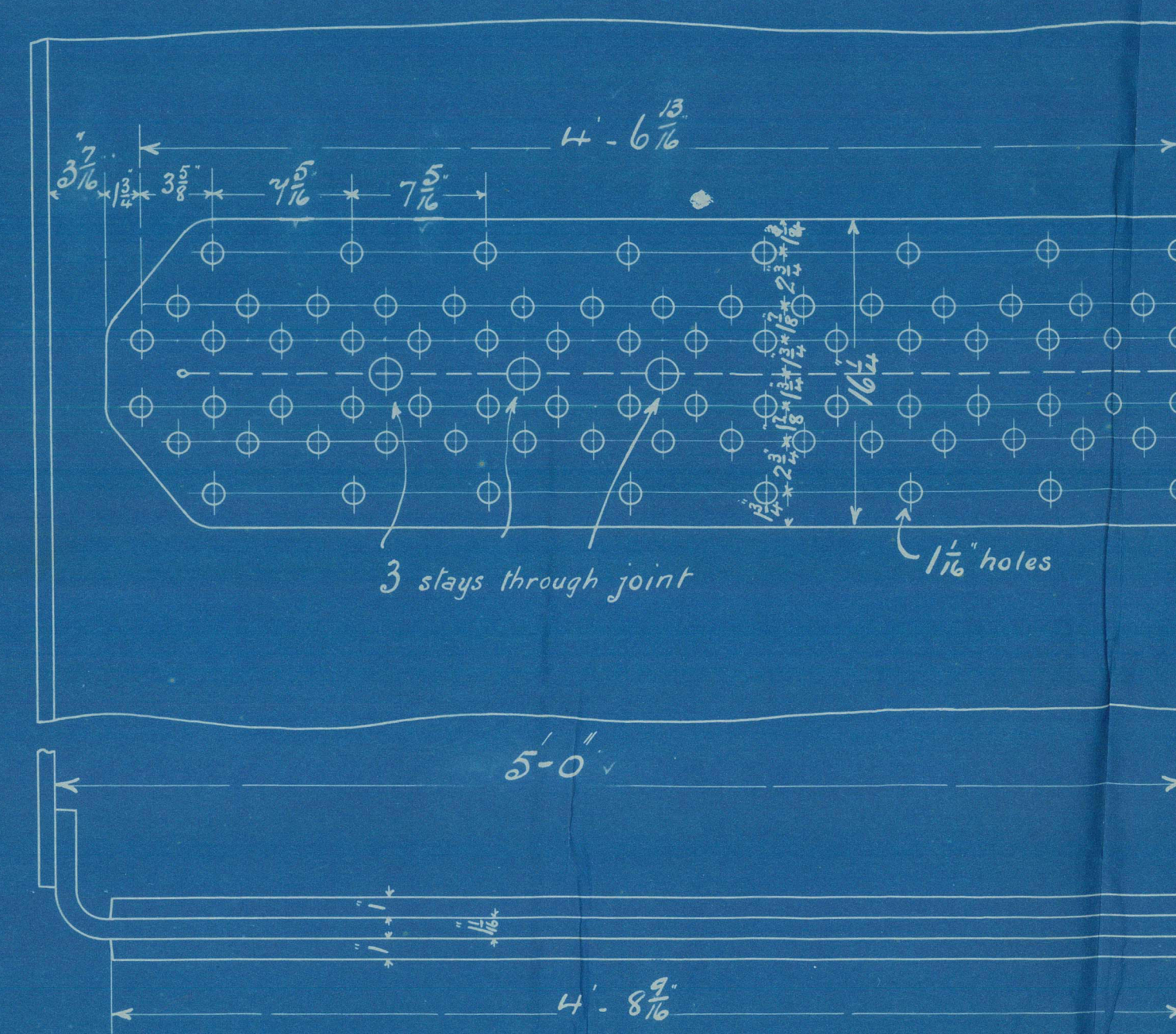


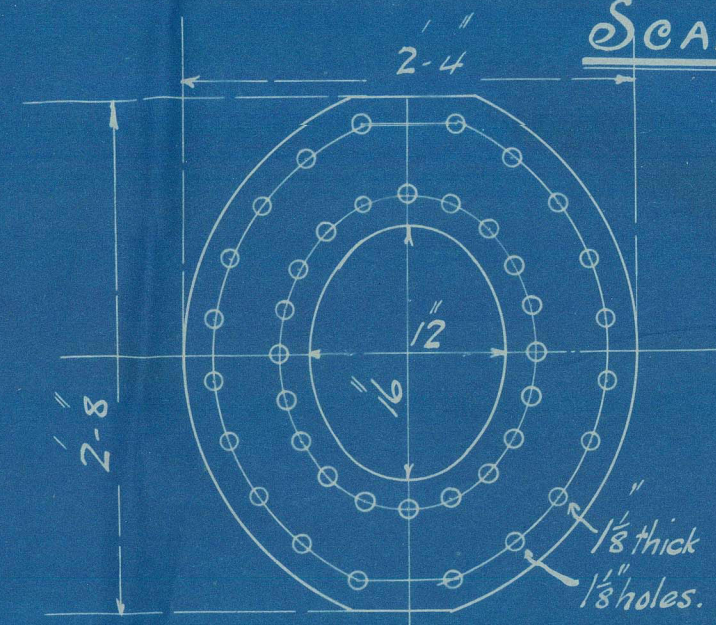
25: 2.05



# BOILER NOS R122.123.

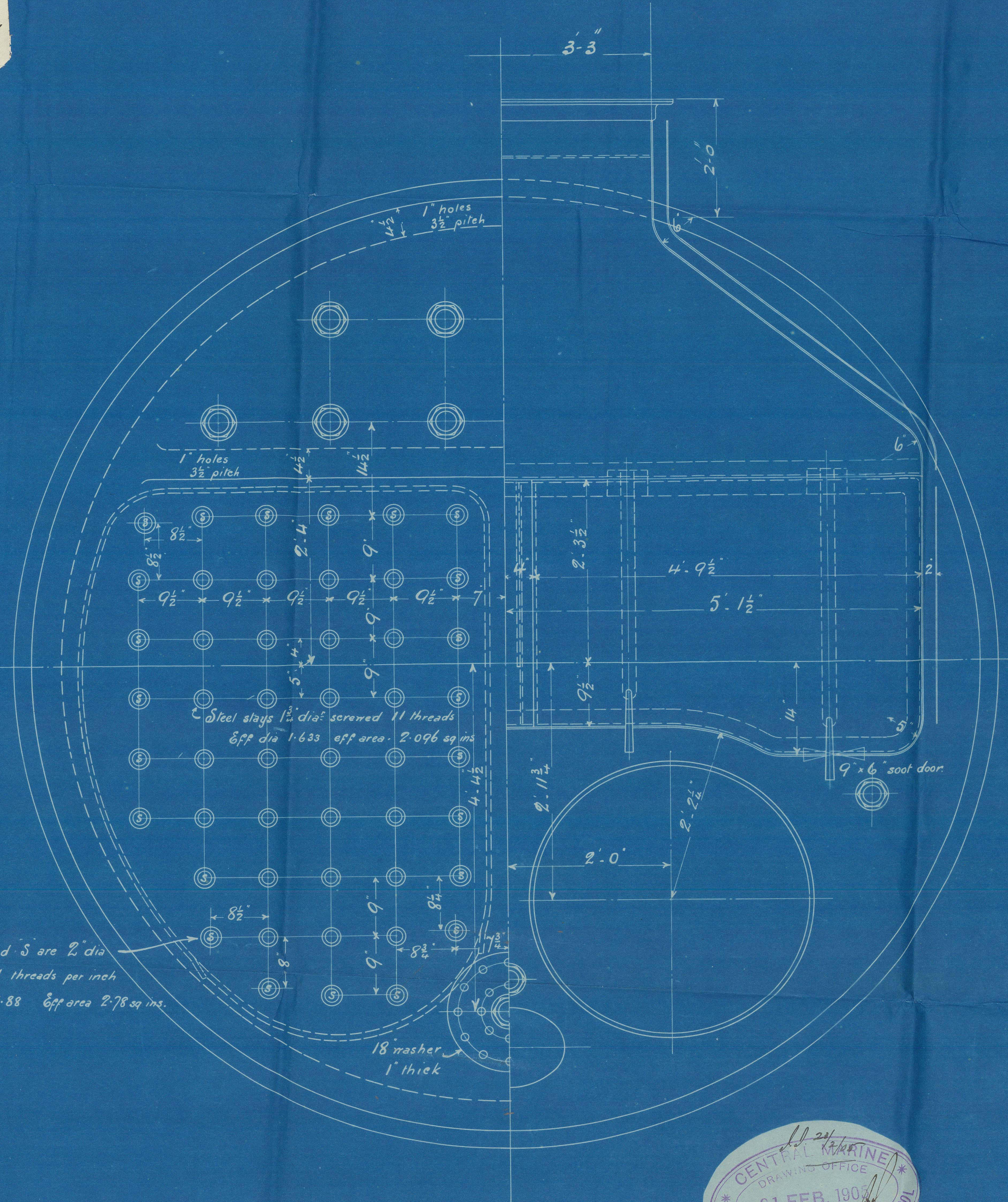
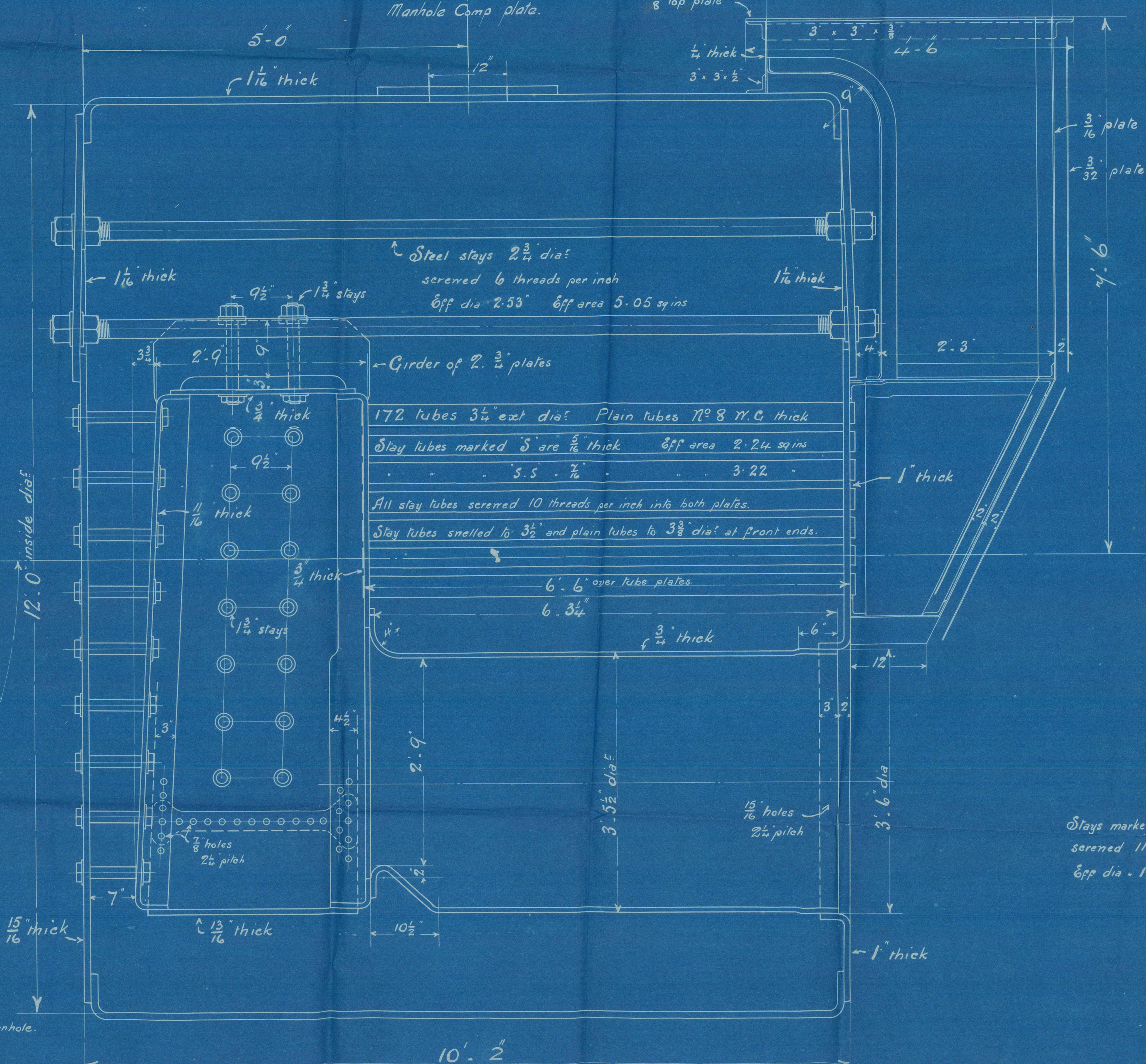
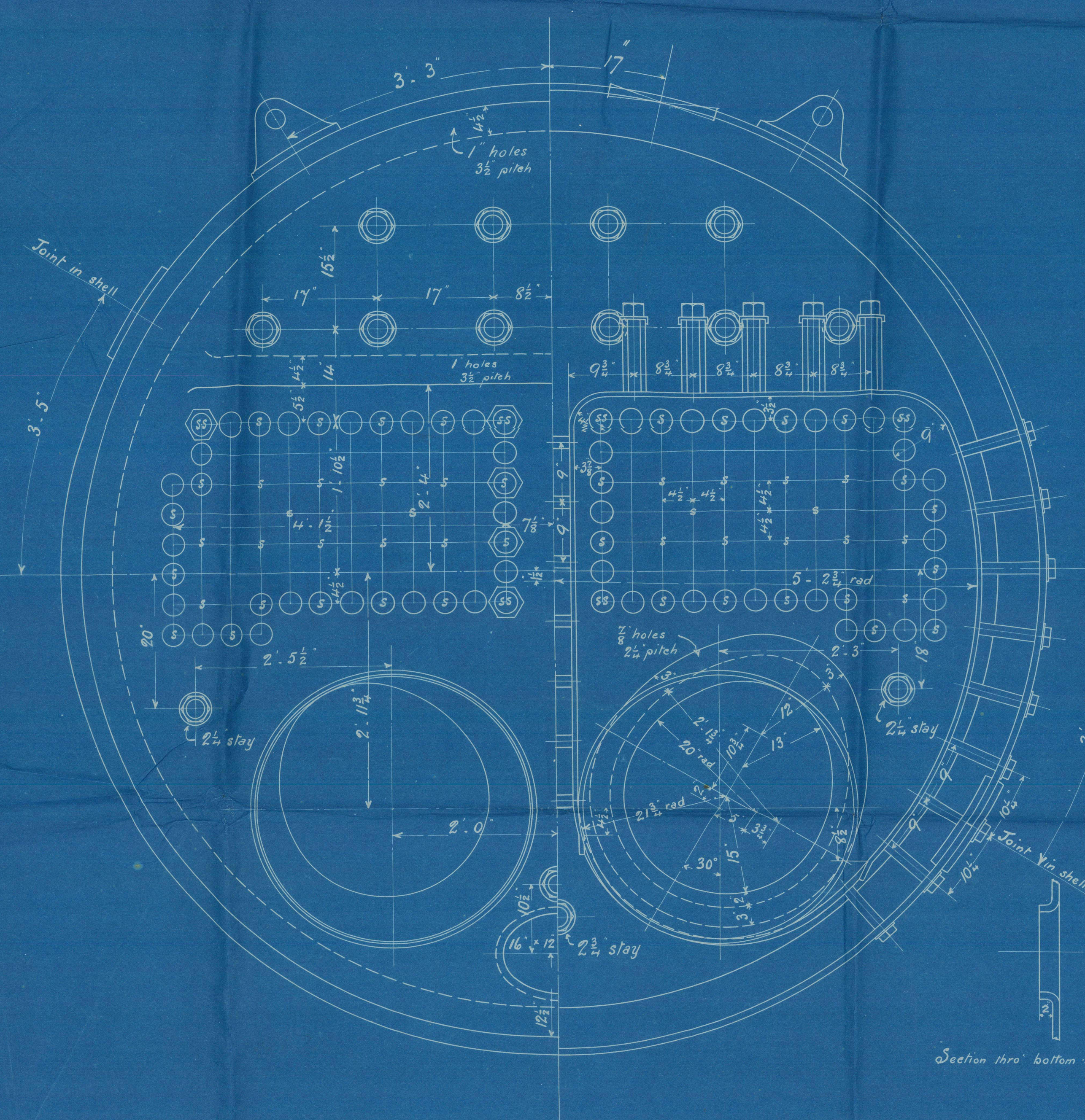
WORKING PRESS 185 LBS TO LLOYDS.

SCALE 1" = 1 FOOT.



Sheet plate to have a tensile strength of 27 1/2 30 Tons.  
But Stays & Main Stays 27 1/2 32 Tons.  
Other plates and stays 26 to 30 Tons.  
Lutes of Iron - Lapwelded.

Heating Surface = 1148 sq ft



NOS R122.123.





Central Marine  
Engine Works

R 122, v R 123

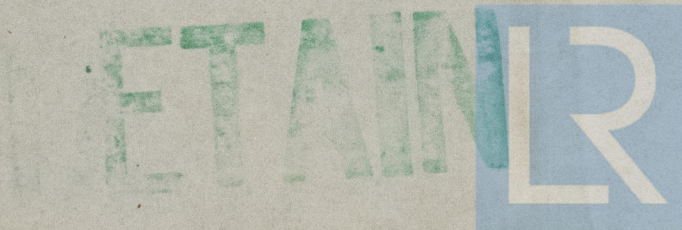
for  
Cochrane House

nos. 342 v 343

Hpl Reports nos. 12626 v 12627

St. Clitus

Hull 16847



© 2021

Lloyd's Register  
Foundation

W737-0065