

# Reinforced Concrete Tugs. 126.

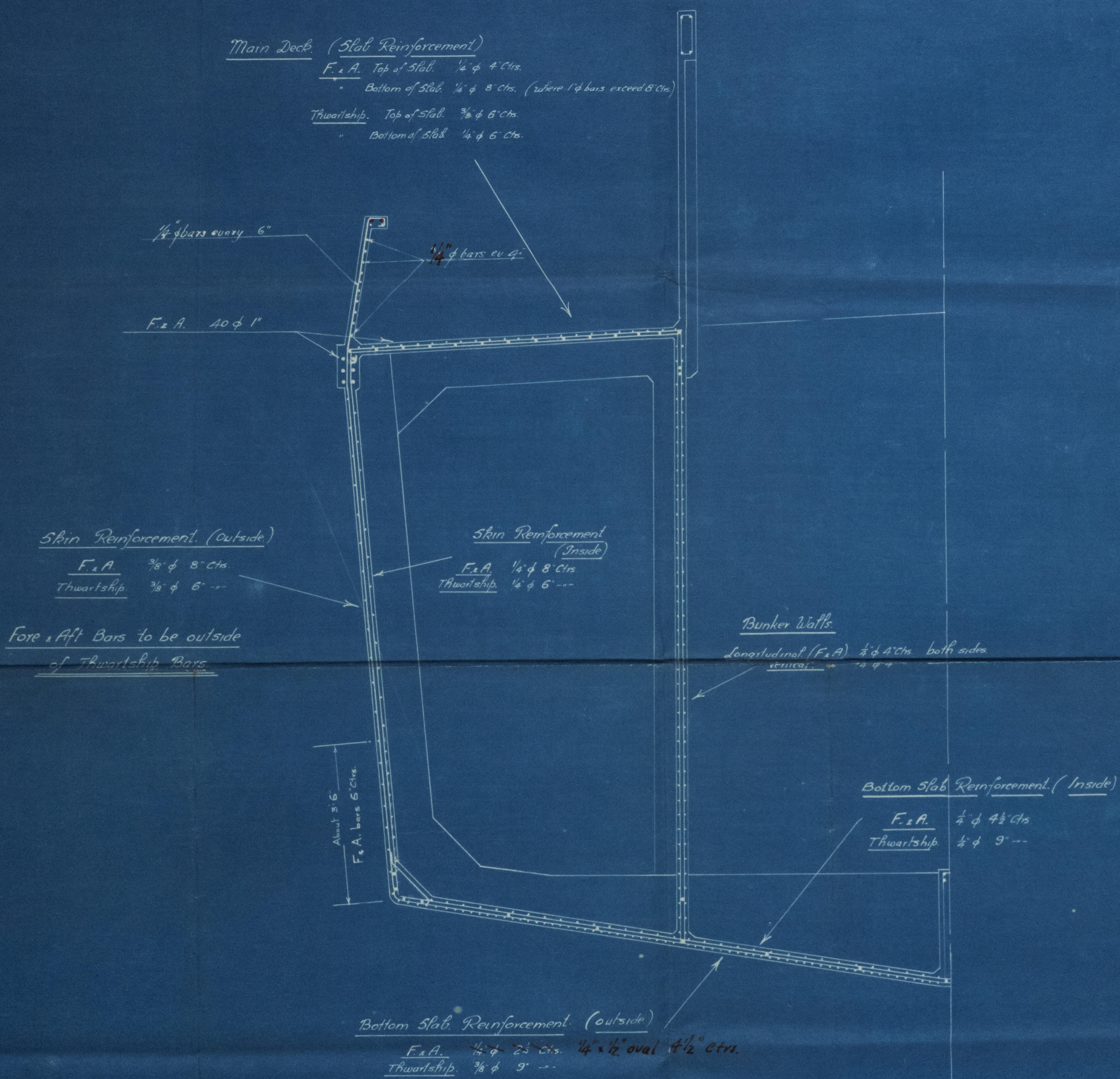
"Crutceable."

Lloyds  
London  
Stamp.

28/5/18.

## Amended Arrangements of Slab Reinforcement.

Scale:  $\frac{1}{2}$ " to 1 foot.



Half Section at Midship

(sign.) Ct  
27.5 18

1-6 24/5/18.  
186. London.  
L.H.S. 2/c

Lloyds Stamp entered 24/5/18.  
Reference to Reinforcement letter 12/1/18

W. H. Southwick 30/6/19.



Lloyds Register  
1837-0057



SUNDERLAND  
SECTIONS OF  
REINFORCED CONCRETE TUG  
"CRETECABLE"

*Wear Concrete Building Co's  
Yard N<sup>o</sup> 3*

SUNDERLAND RPT. NO. 27654

DETAIN



© 2021

Lloyd's Register  
Foundation

W737-0057