

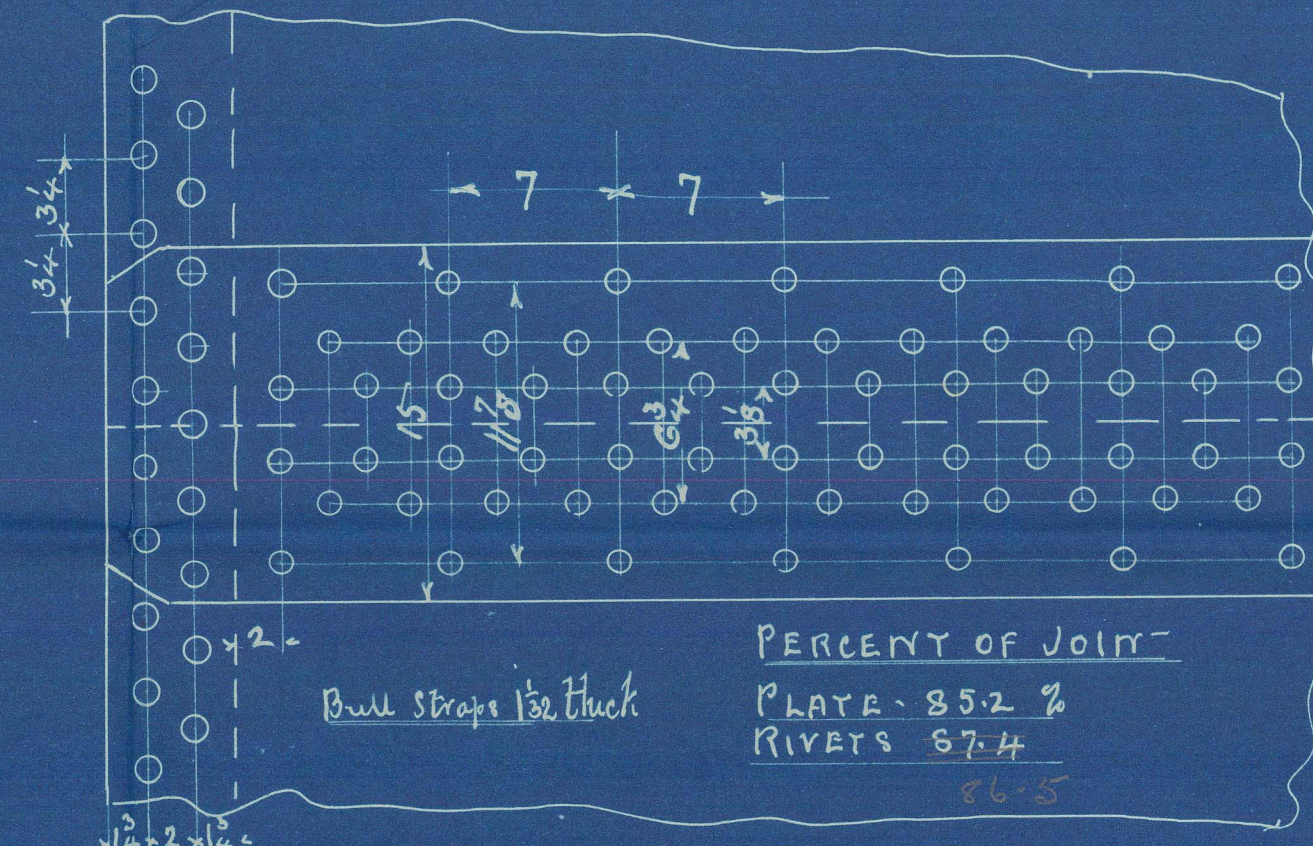
14-11-04

DIMENSIONS.

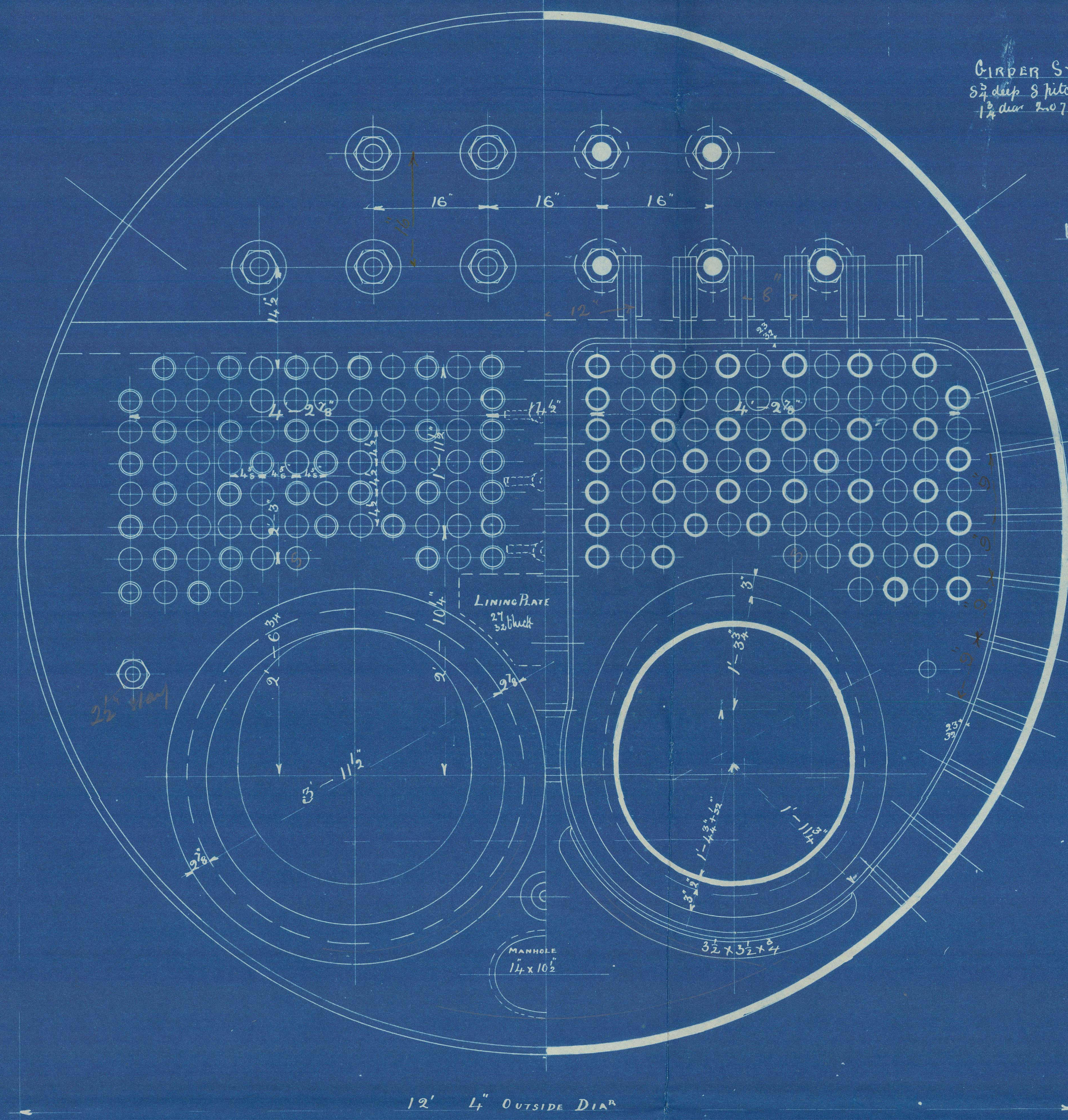
LENGTH OF FIRE BARS	
AREA OF FIRE GRATE	
DIAM OF TUBES OUTSIDE	3 1/4
LENGTH OF TUBES	Over Plates 6' 5 3/4"
NO OF TUBES	168
SURFACE OF TUBES	900 sq ft
TOTAL HEATING SURFACE	1120 sq ft
WORKING PRESSURE	180
DIAM OF SAFETY VALVE	2 1/4"

PARTICULARS OF RIVETING
 SHELL Longitudinal joint to be triple riveted double Butt joint. Holes drilled 1 1/2" dia 7 pitch. Circumferential Seams to be double riveted Lap joints. Holes drilled 1 1/2" dia 3 1/4 pitch.
 FURNACES Front & Back Ends to be single riveted.
 COMB CHAMBERS Bottom & Sides to level of Furnace tops to be double riveted rest to be single riveted.
 END PLATES Cross Seams to be double riveted.

MANHOLE IN SHELL 16 X 12
 lined inside with 1/2" plate 7 Bored



PERCENT OF JOINT
 PLATE - 85.2 %
 RIVETS - 87.4

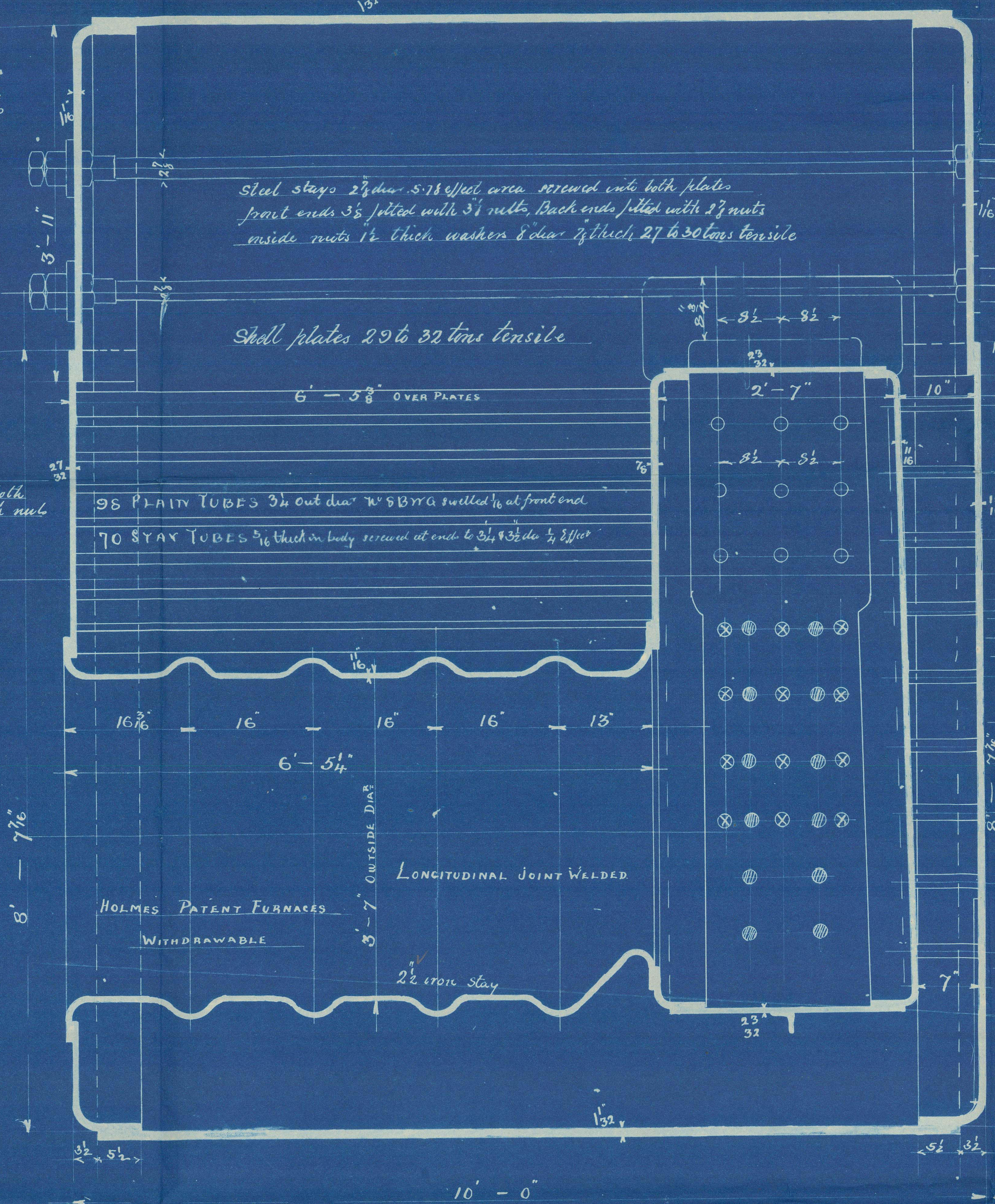


CIRCUER STAYS Double Iron 7 thick 5 1/2" deep 3 pitch fitted with 3 supporting bolts 1 1/2" dia 2-07 3/16" Area 8 pitch

DOG STAYS To be fitted between tube nests

COMB CHAMBERS To be fitted with stays 1 1/2" dia 1 1/2" pitch 2-07 3/16" Area

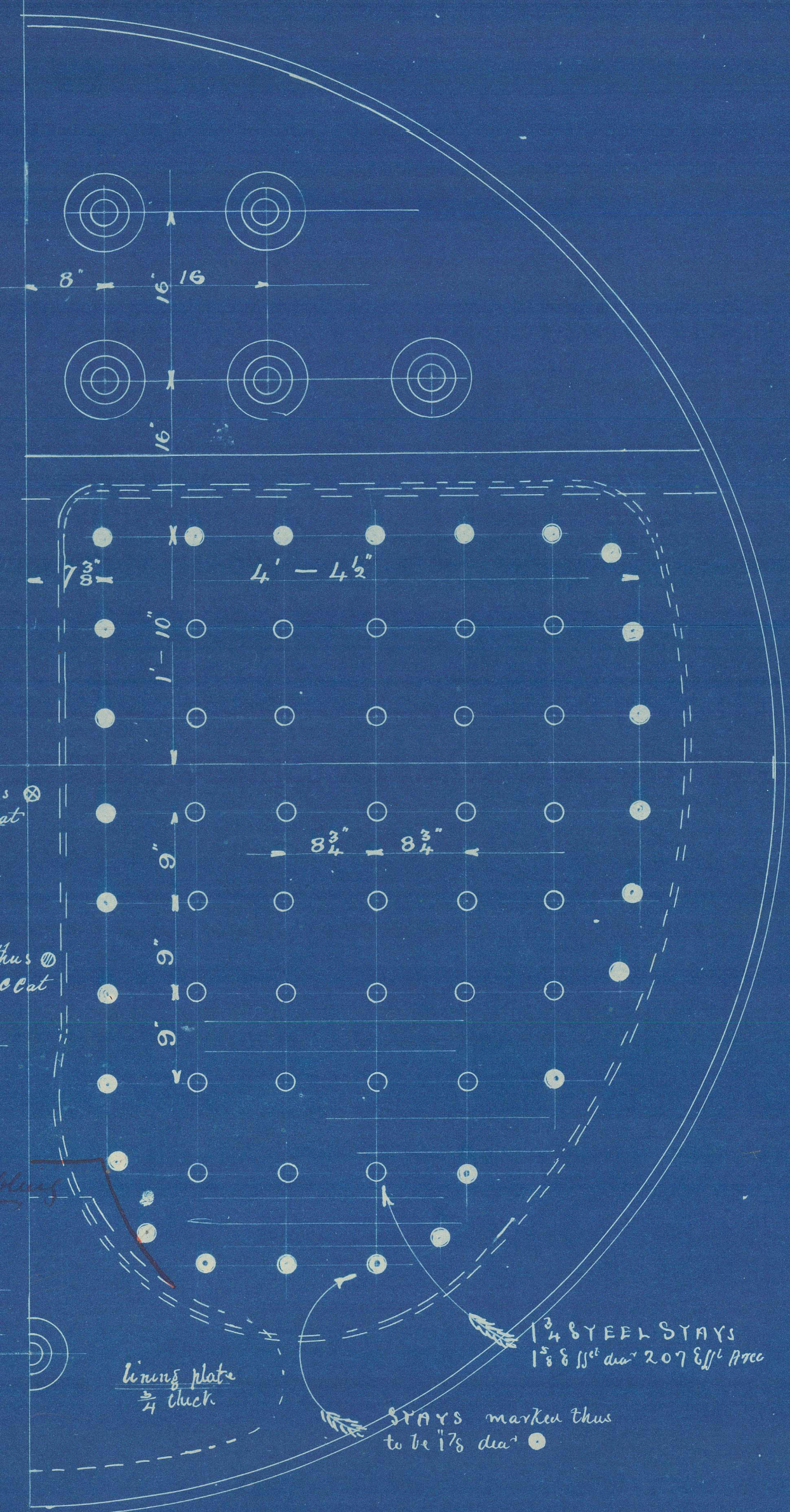
All Screw Stays to be screwed into both plates & fitted with nut at both ends



Stays marked thus to be between C.C. & centre

Stays marked thus to be between C.C. & sides & shell

Stays marked thus to be 1 1/2" dia



12-4 OUT DIA X 10-0 LONG
 180 LBS W/P

BOILER NO 746

746 10-11-04
 13-11-04
 LLOYD'S REGISTER
 OF SHIPPING
 11 NOV 1904
 + HULL +

CHARLES D HOLMES & CO
 HULL

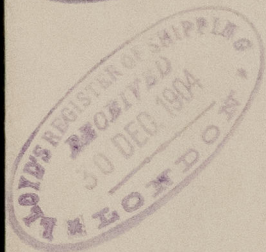
13-11-04
 13-11-04

Hull. Rept No 16641



Boiler No 746
Sc. K. Calabria

180lb



RETAIN



© 2021

Lloyd's Register
Foundation

W736-0007