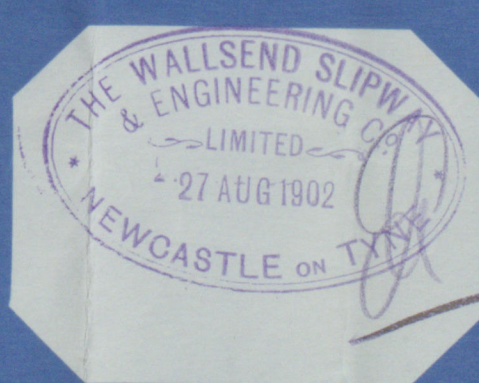


2.9.12

CHECKED BY *R.D.*
DATE *Aug. 24/1912*
TIME CHARGED TO No. 1



BOILER CONTRACT No. 568-D.

MESSRS SIR W. G. ARMSTRONG WHITWORTH & CO. S.S. No. 736.7

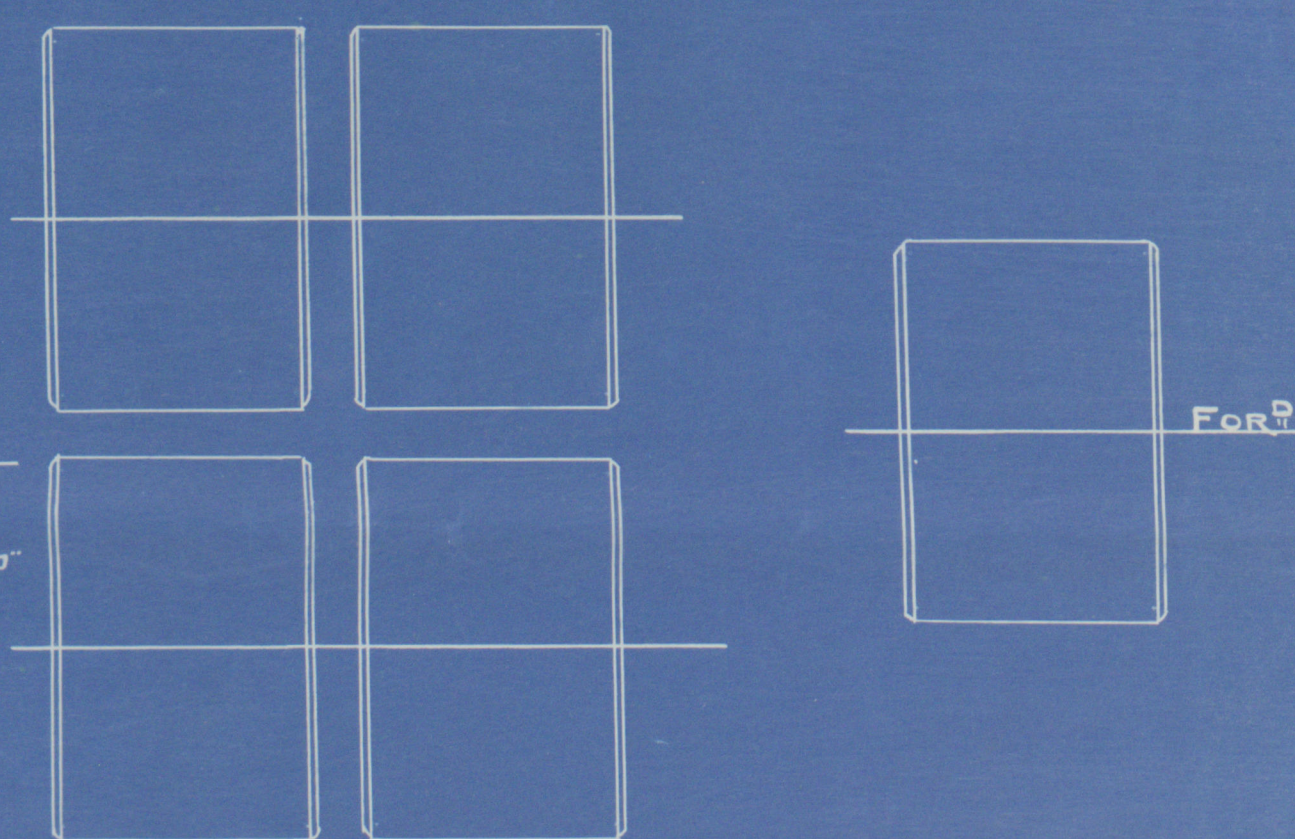
To PASS BOARD OF TRADE & LLOYD'S REQUIREMENTS

5.0 OFF THIS FOR EACH CONTRACT. SCALE 1"=1 FOOT.

HEATING SURFACE SQR. FT.
TUBES 2,021
FURNACES 165
COMBUSTION CHAMBERS 251
TUBE PLATES 85
1. BOILER 2,522 SQR. FT.

TOTAL 5. BOILERS 12,610 SQR. FT.

WORKING PRESSURE 180 LBS. PER SQR. INCH. TEST PRESSURE 360 LBS.



PLAN OF BOILERS

AUG. 21ST 1902

MATERIAL MANUFACTURED BY
MESSRS

PLATES STEEL
RIVETS "
STAYS "
TUBES IRON

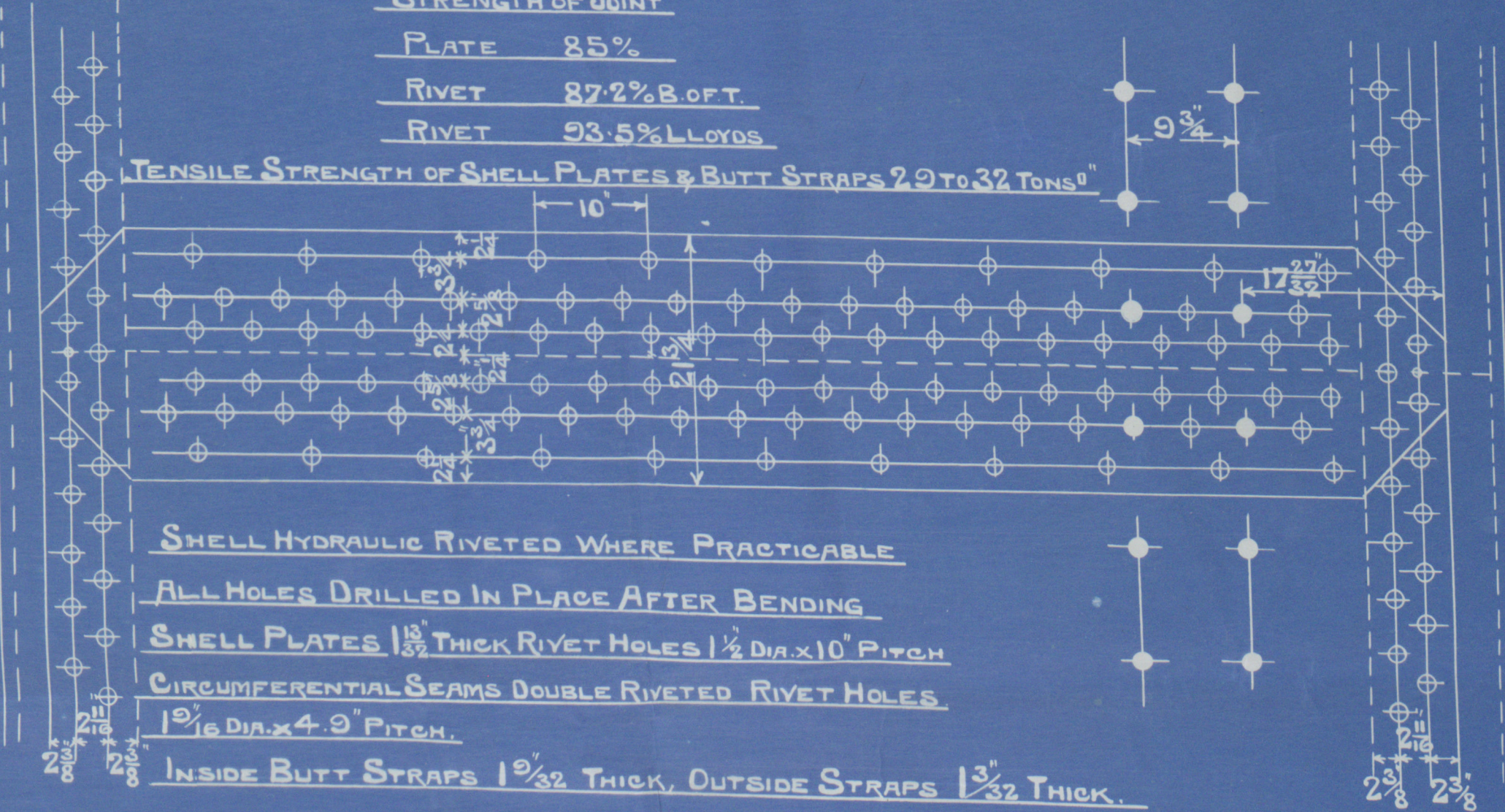
SPARE GEAR

- 30. PLAIN BOILER TUBES
- 4. STAY " "
- 8. BOLTS & NUTS FOR MANHOLE DOORS
- 8. GLANDS FOR MANHOLE DOORS
- 15. SCREWED STAYS ASSORTED LENGTHS WITH NUTS

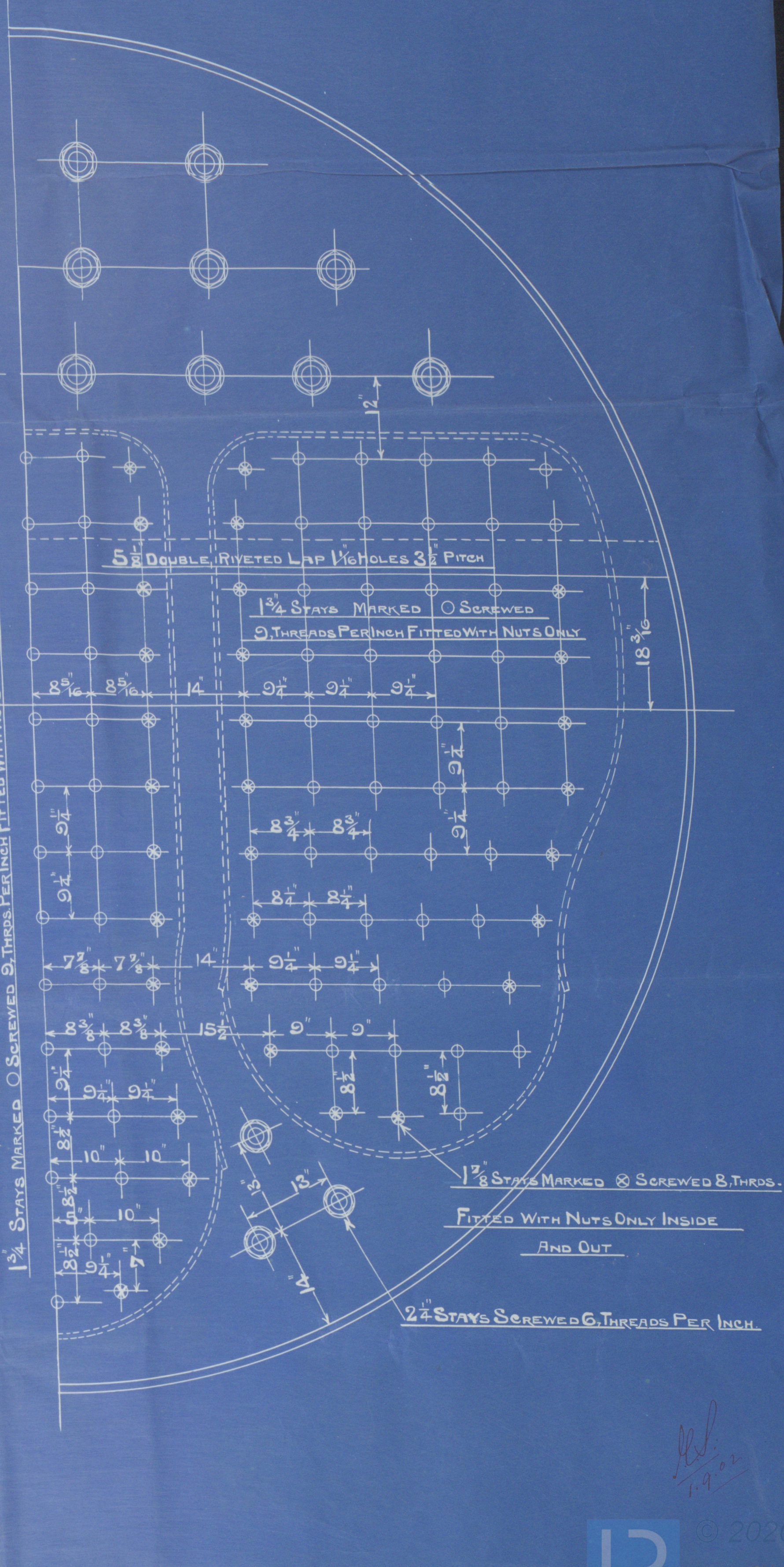
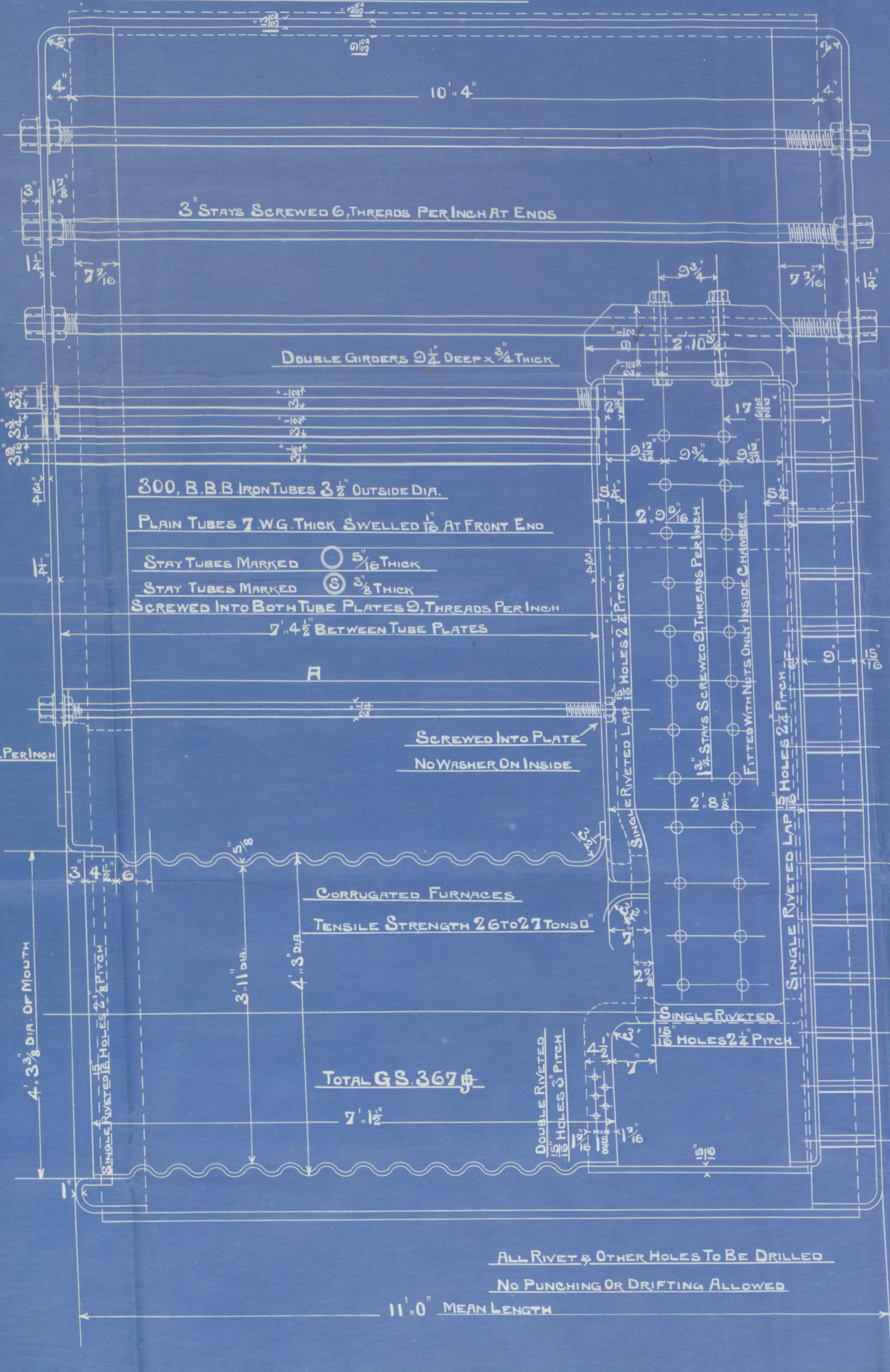
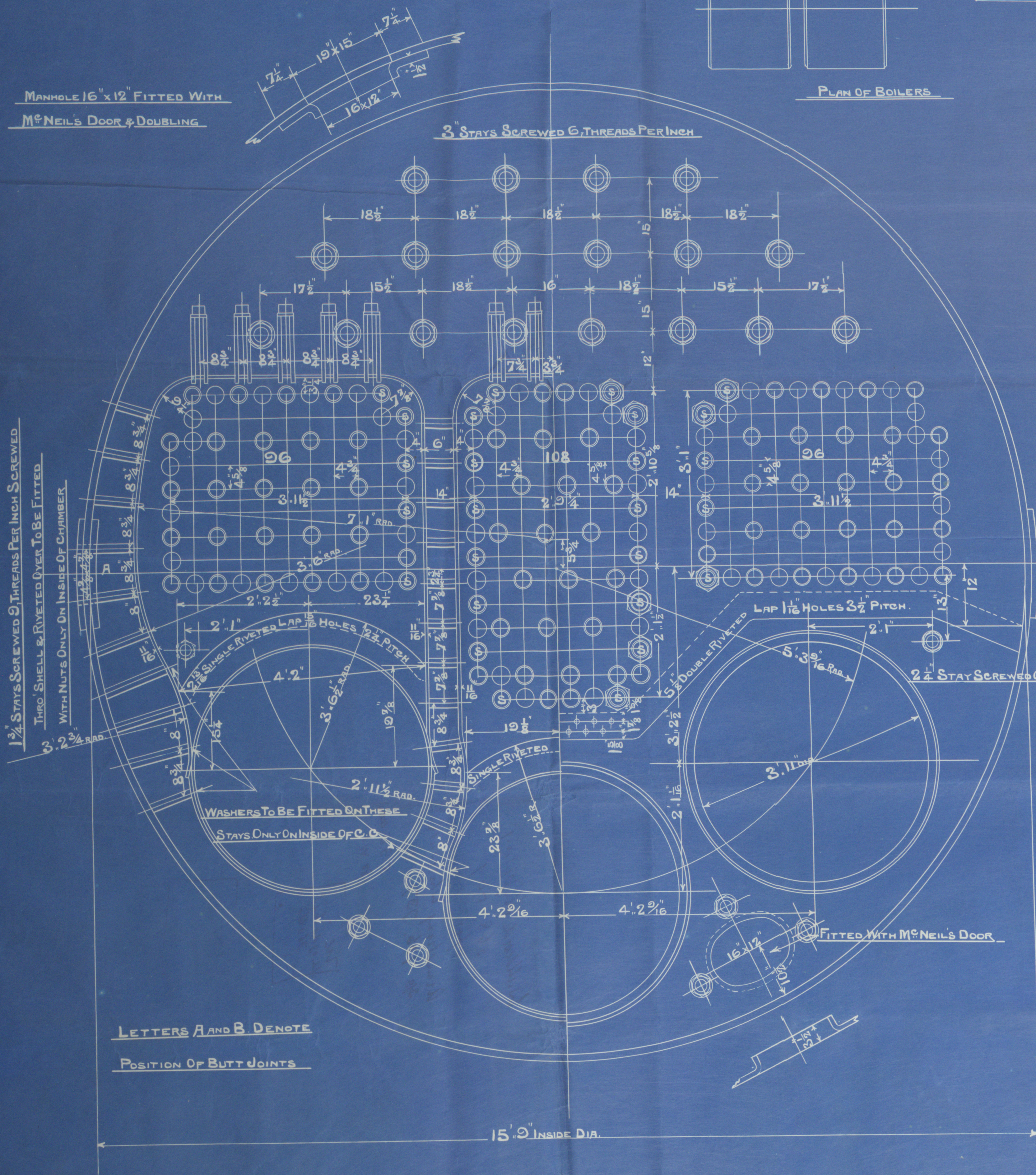
PLAN OF SHELL RIVETING

STRENGTH OF JOINT
PLATE 85%
RIVET 87.2% B.O.F.T.
RIVET 93.5% LLOYD'S

TENSILE STRENGTH OF SHELL PLATES & BUTT STRAPS 29 TO 32 TONS



MANHOLE 16" x 12" FITTED WITH
McNEIL'S DOOR & DOUBLING



Walsund Shipway

568, 569

for

Armstrong Whitworth

S/S 736, 737.

5 S.E. (wh)

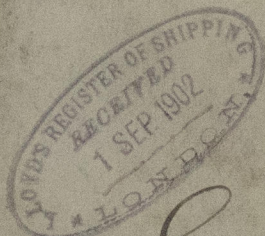
180 W.P.

No 6511
Lloyd's List
360/40
G.A.H. 27/2/03

S/S "Yongala"

No 6560
Lloyd's List
360/40
G.A.H. 24/4/03

S/S "Grantala"



S.S. Grantala

Newcastle Report

S/S 736 737
4636H



Lloyd's Register
Foundation