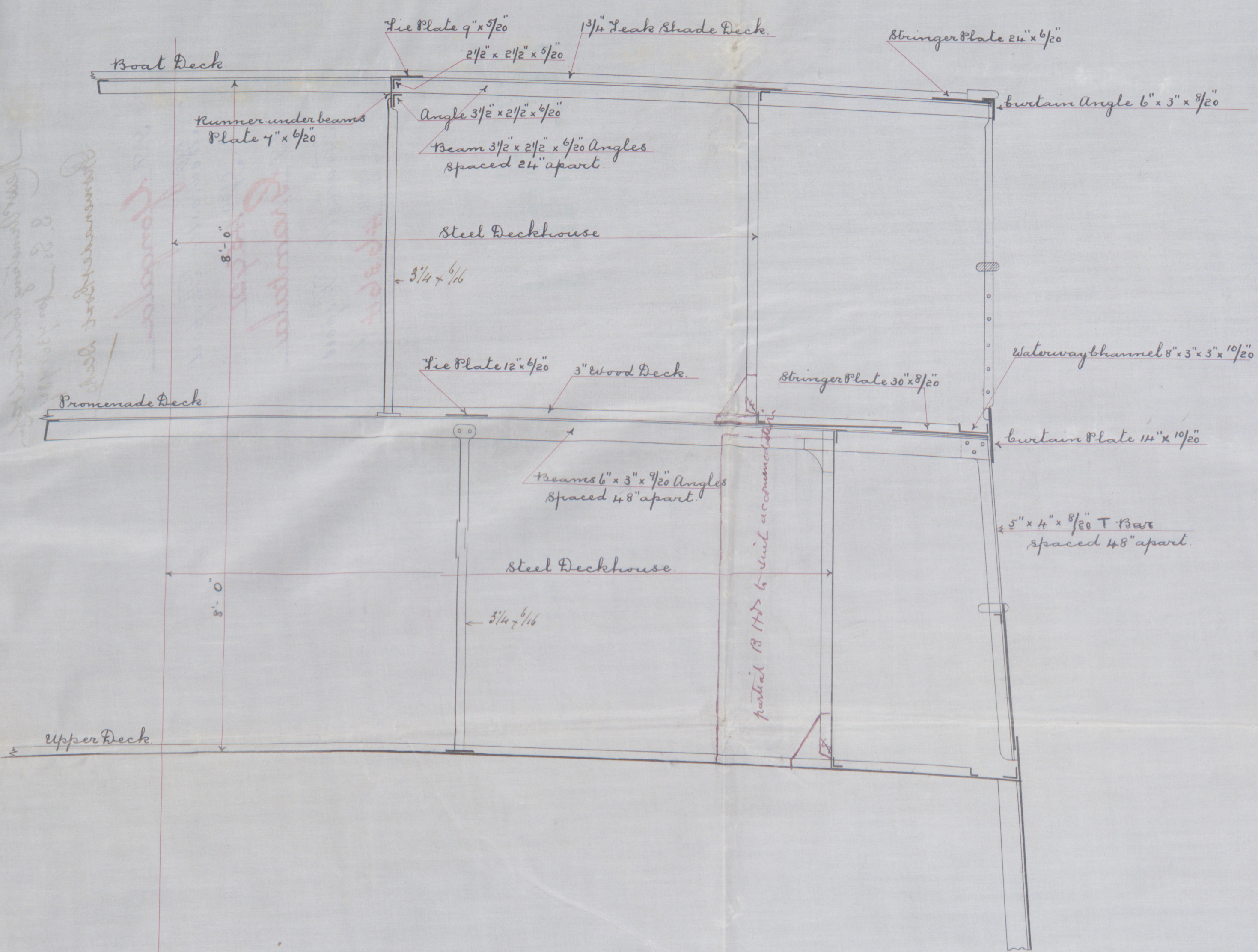


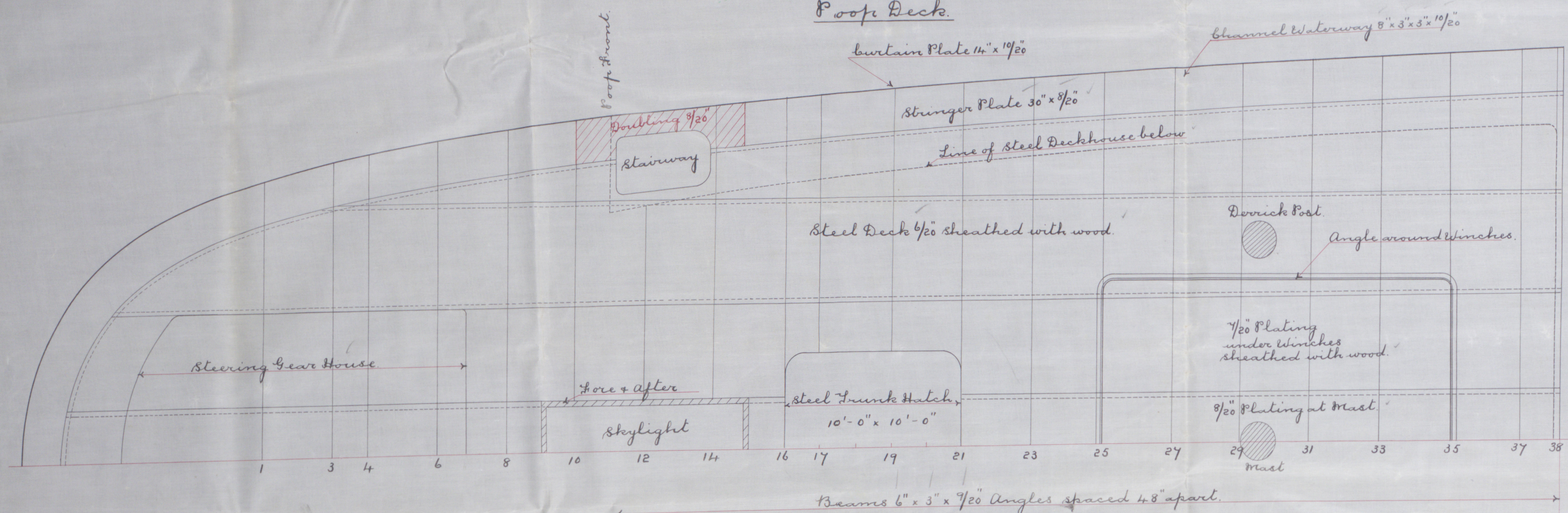
16.9.02

Section thro' Boat & Promenade Decks

Scale $\frac{1}{2}'' = 1'$ Foot



Poole Deck

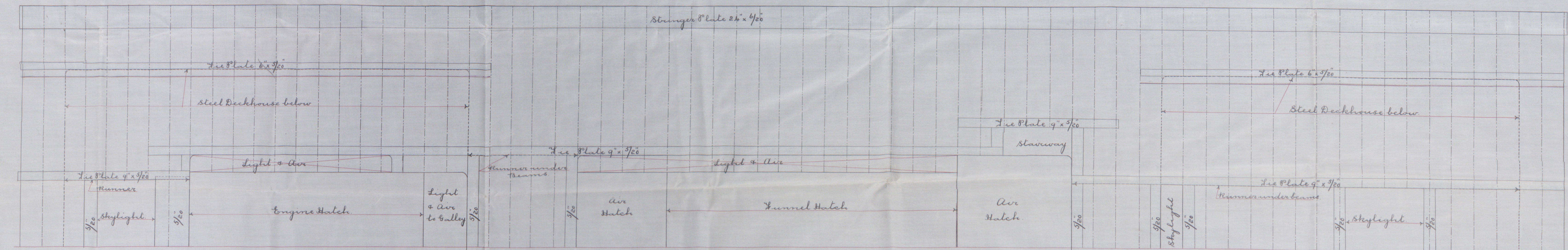


No. 736 - 7 Ships

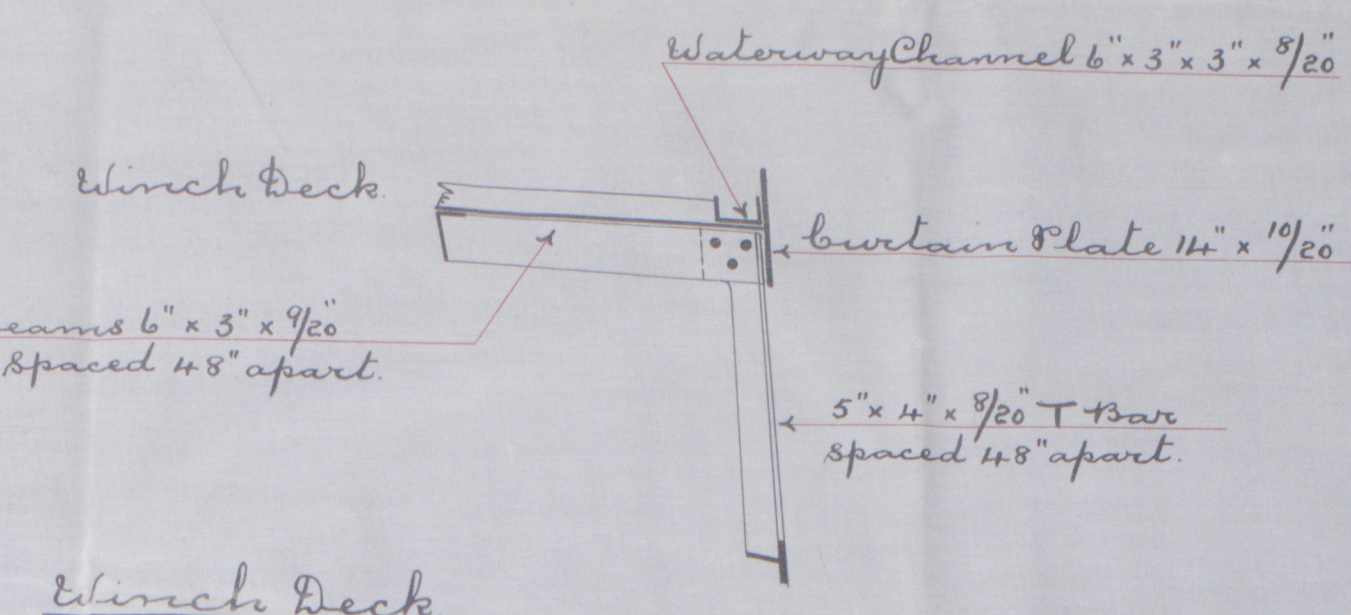
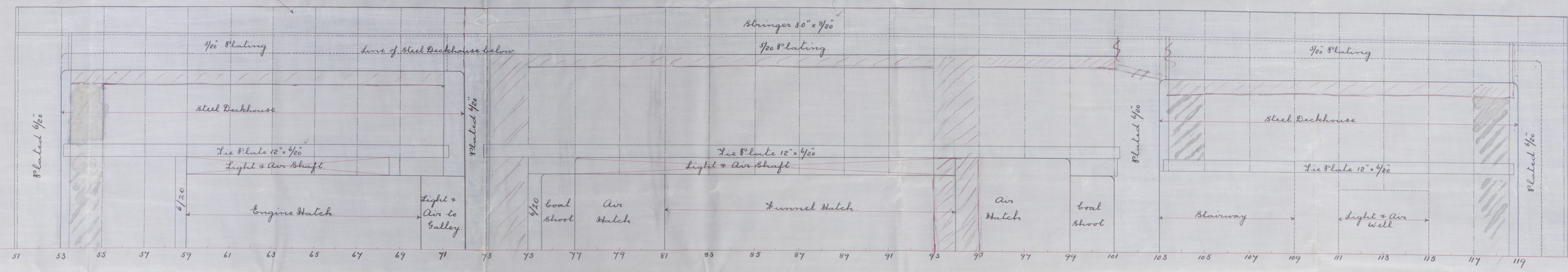
Promenade & Boat Deck Plans &c.

Scale $\frac{1}{4}'' = 1'$ Foot

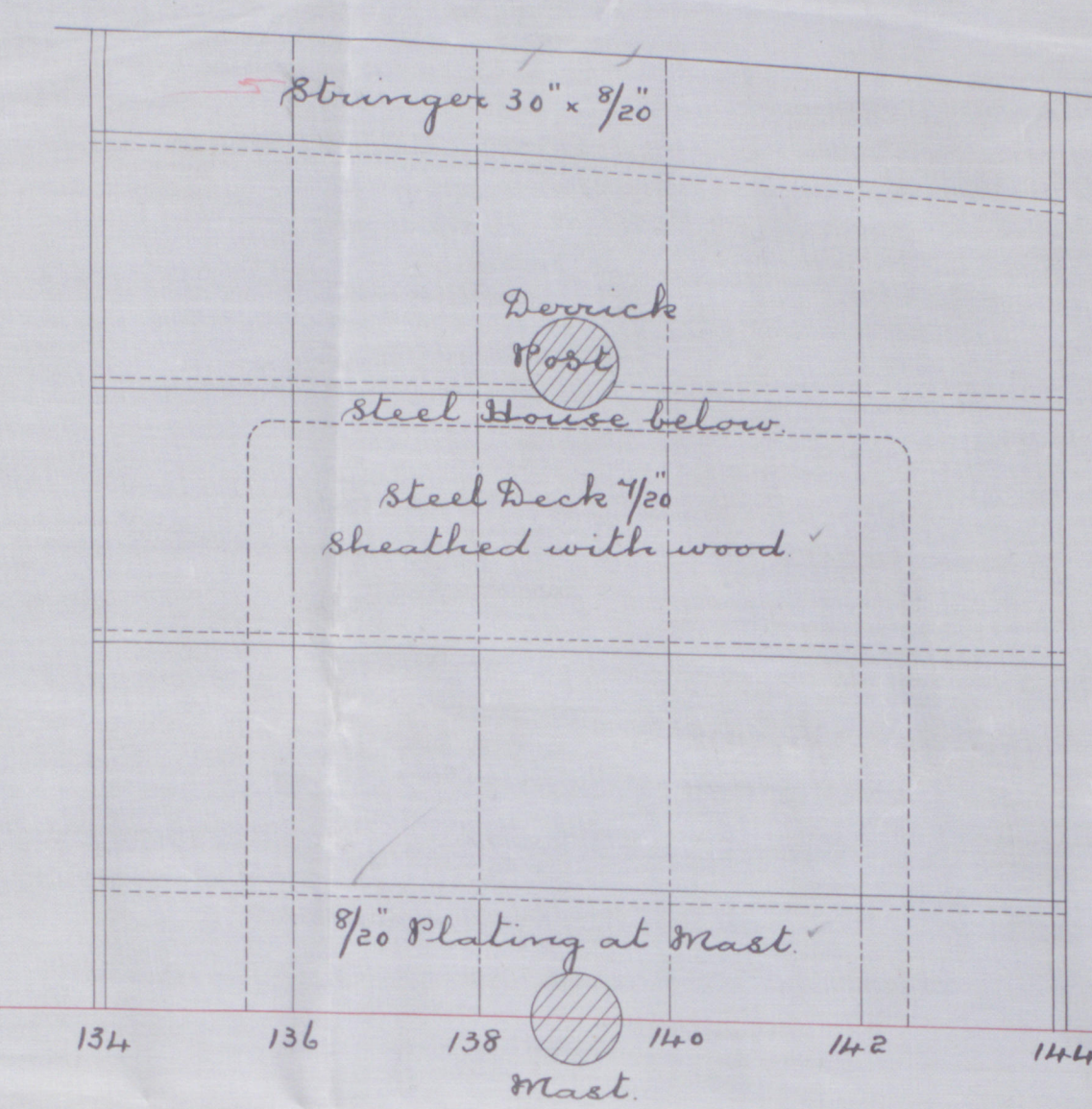
Boat Deck



Promenade Deck



Winch Deck



A circular purple ink stamp is located in the upper right corner of the document. The text within the stamp is arranged in a circular pattern. The outer ring contains the words "REGISTER OF SHIPPING". The inner part of the stamp contains the word "RECEIVED" at the top, the date "5 OCT 1909" in the center, and the initials "N. B. G. W." at the bottom.

Invc. 45921

N^o 434. S.S. Grantala

7
LOFNS REGISTER OF SHIPPING
RECEIVED
13 JAN. 1904
* LONDON *

[illegible]

[Faint handwritten notes visible through the paper]