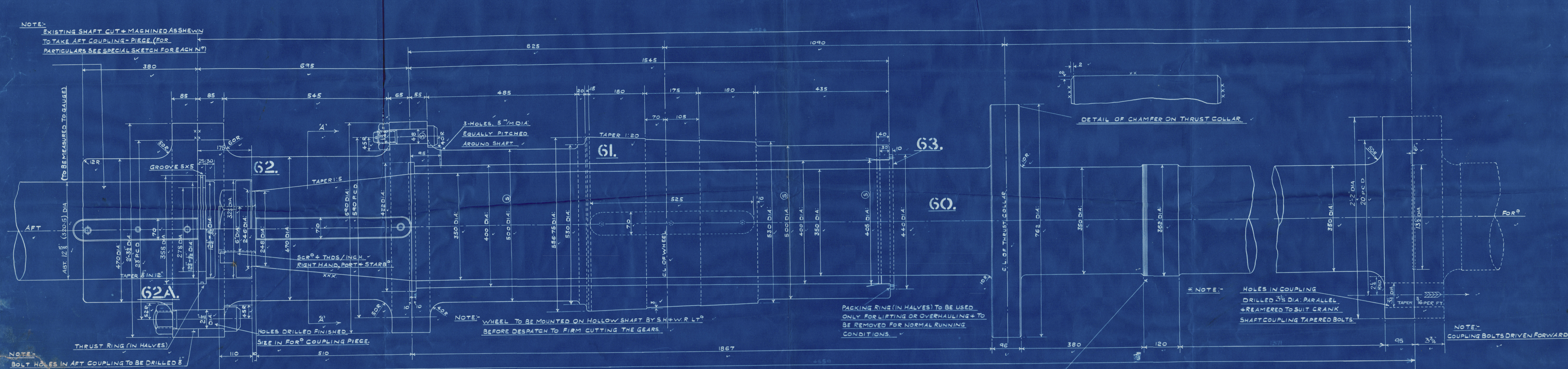


NOTE:-
EXISTING SHAFT CUT & MACHINED AS SHOWN
TO TAKE AFT COUPLING-PIECE (FOR
PARTICULARS SEE SPECIAL SKETCH FOR EACH N°)



NOTE:-
BOLT HOLES IN AFT COUPLING TO BE DRILLED 1/8\"/>

* NOTE:-
HOLES IN COUPLING
DRILLED 3/8\"/>

NOTE:-
COUPLING BOLTS DRIVEN FORWARD

NOTE:-
BOLT HOLES IN AFT COUPLING TO BE DRILLED 1/8\"/>

NOTE:- TOP FACE OF KEY TO BE
PARALLEL TO CROWN OF SHAFT

REFERENCE MARKS RELATING TO MACHINED SURFACES.
X = ROUGH MACHINED TO DIMENSION
XX = ACCURATELY MACHINED TO DIMENSION
XXX = SPECIAL SMOOTH SURFACE TO BE GROUND OR SCRAPPED
S = SLIDING FIT. VIZ. SPIGOTS, ETC.
P = FIT TIGHT

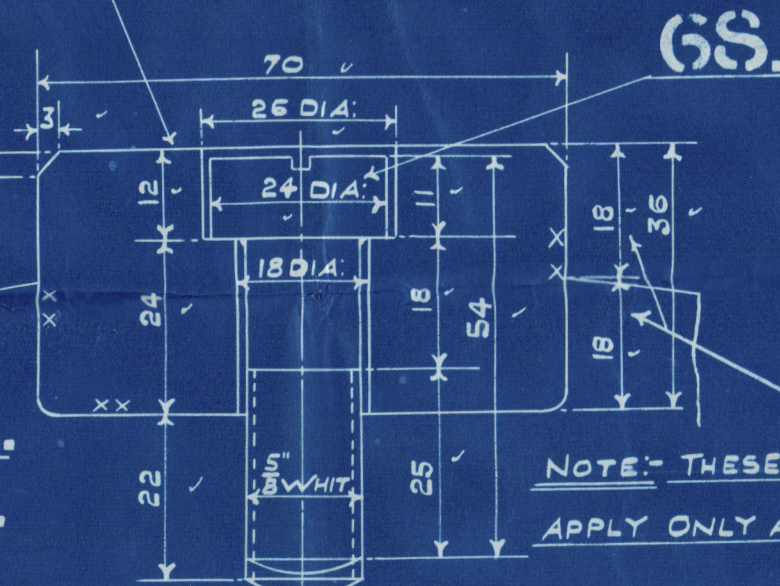
SERRATIONS AT AFT END ONLY

DETAIL OF SERRATIONS ON THRUST SHAFT

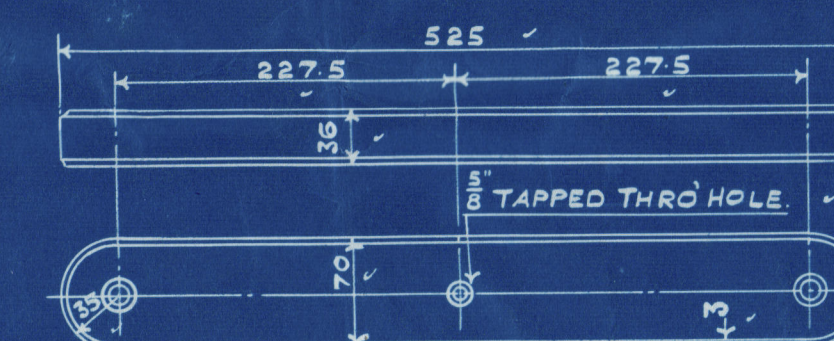


LOOKING AFT ON
AFT COUPLING

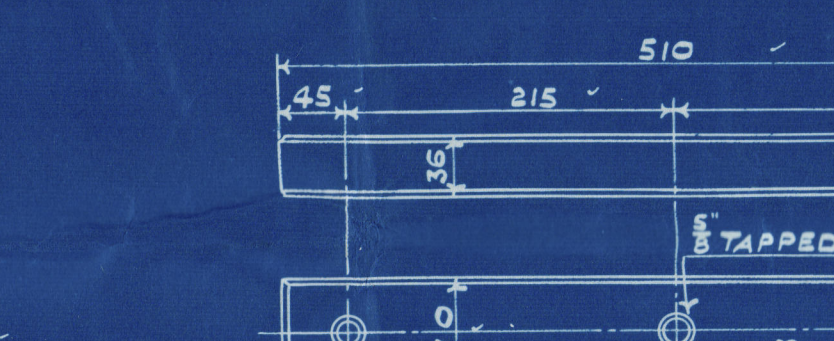
LOOKING FOR°
ON SECTION 'A-A'



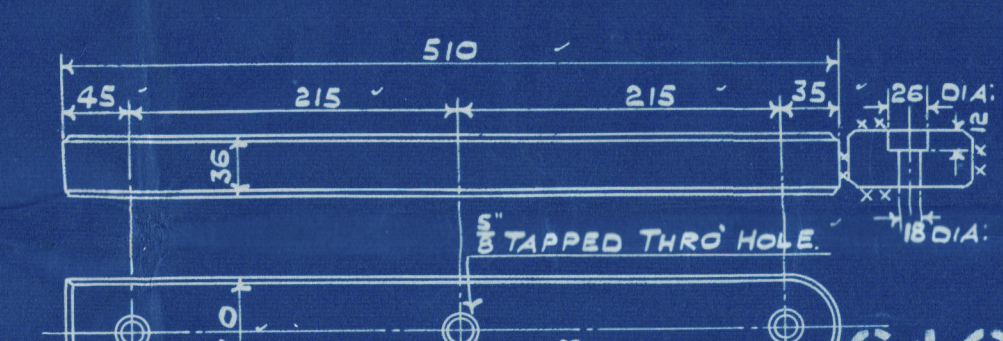
NOTE:- THESE DIMENSIONS
APPLY ONLY AT MID-LENGTH



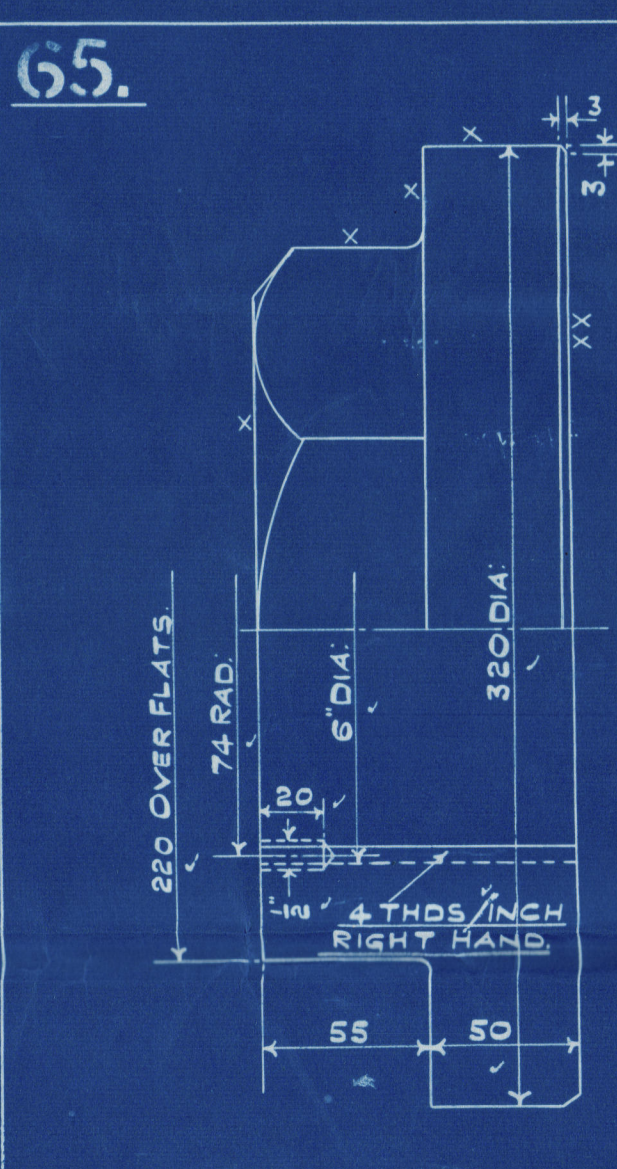
GEAR WHEEL KEY



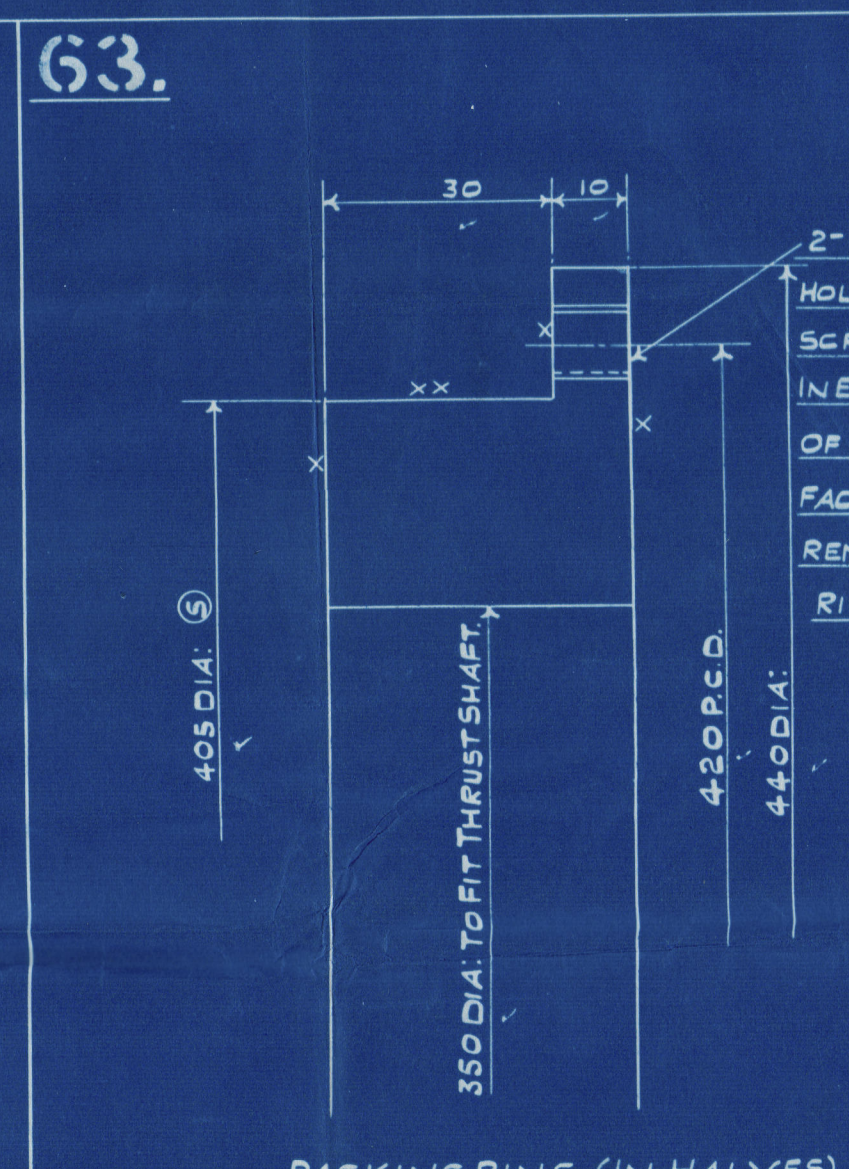
AFT COUPLING PIECE KEYS



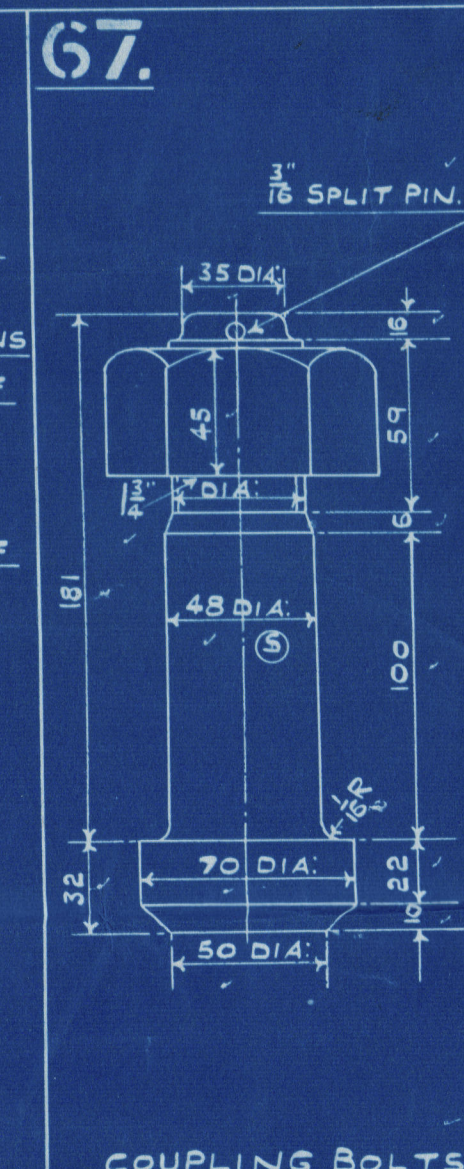
FOR° COUPLING-PIECE KEYS



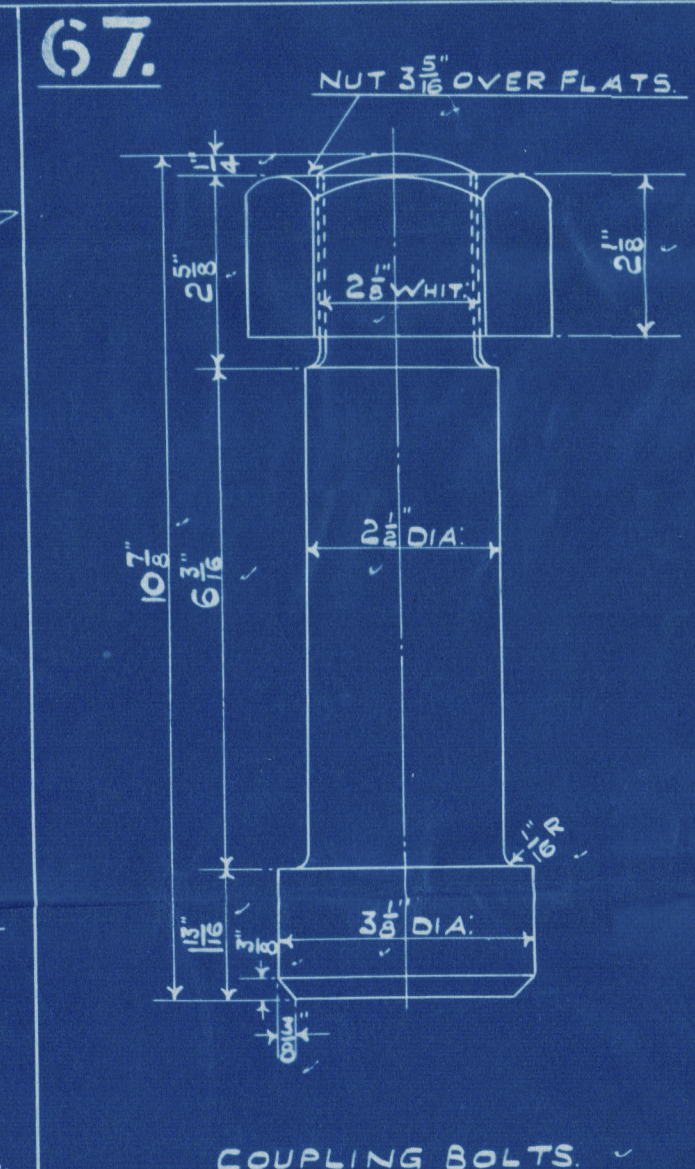
COLLAR NUT



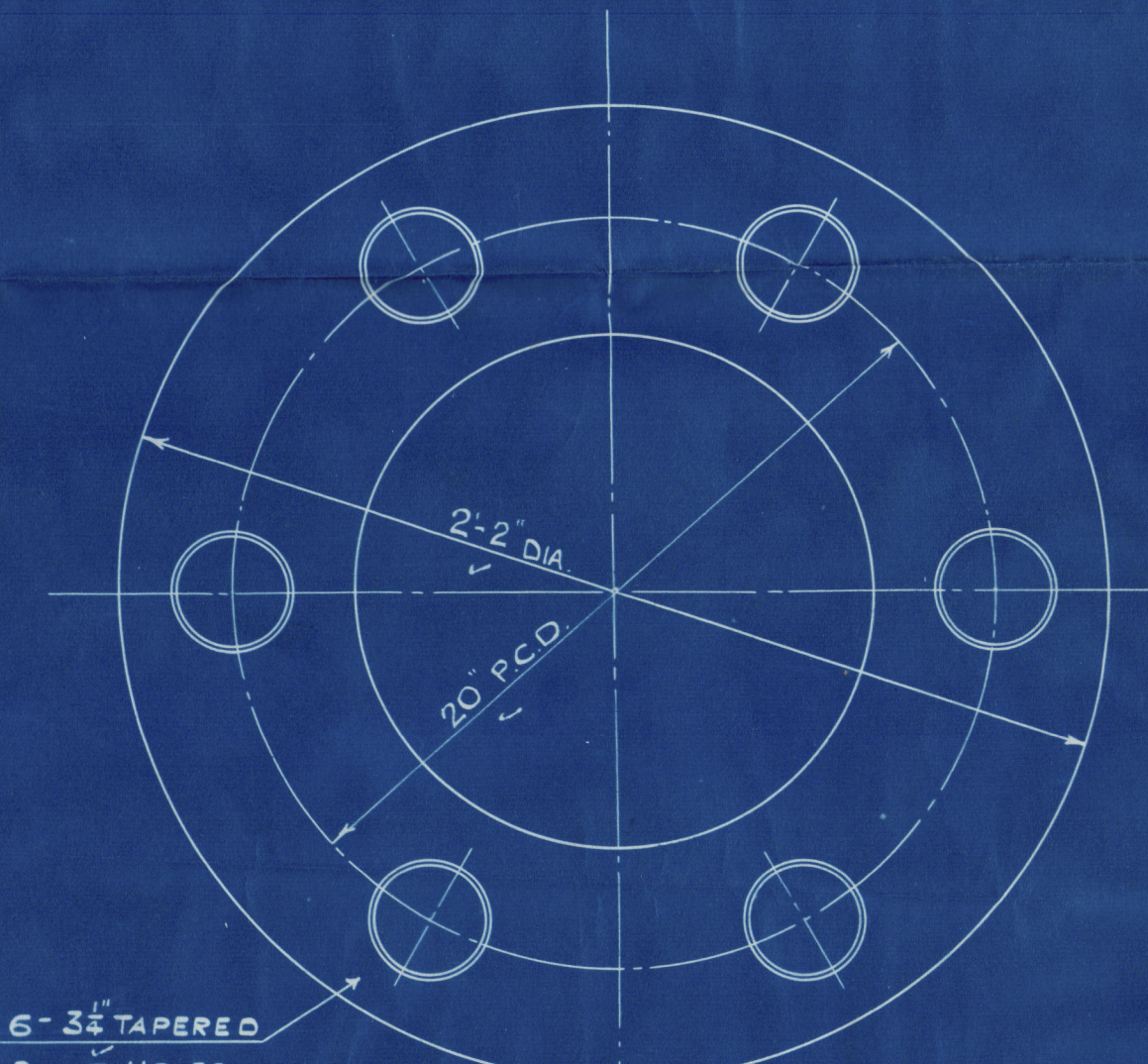
PACKING RING (IN HALVES)



COUPLING BOLTS



COUPLING BOLTS



LOOKING AFT
ON FOR° COUPLING

MAKE FROM THIS DRAWING FOR EACH N°

MAKE FROM THIS DRAWING FOR PARTS				N° REQ			
GROUP	DESCRIPTION	MAT	REMARKS	PORT	STAR	SPARE	
BW60	THRUST SHAFT	SMST	ORD° OUTSIDE	1	1	—	—
61	GEAR WHEEL	SMST	ORD° OUTSIDE	1	1	—	—
62	FOR° COUPLING PIECE	SMST	ORD° OUTSIDE	1	1	—	—
62A	AFT " "	SMST	ORD° OUTSIDE	1	1	—	—
63	PACKING RING (IN HALVES)	MST	STOCK PLATE	1	1	—	—
63A	THRUST " (FOR AFT COUPLING)	MST	STOCK PLATE	1	1	—	—
64	KEYS FOR AFT COUPLING-PIECE	MST	STOCK	2	2	—	—
64C	" " FOR°	MST	STOCK	2	2	—	—
64G	" " GEAR WHEEL	MST	STOCK	1	1	—	—
65	COLLAR NUT	MST	STOCK	1	1	—	—
67	COUPLING BOLTS+NUTS (48" / 4)	ST+WL	STOCK BAR	9	9	1	1
67	" " " (2 1/2")	ST+WL	ORDERED OUTSIDE	9	9	9	9
68	CHEESE HEADED SCREWS	STEEL	STOCK (FOR COUPLING PIECE KEYS)	4	4	—	—
68	" " " "	STEEL	STOCK (GEAR WHEEL KEYS)	2	2	—	—
68	" " " "	STEEL	STOCK (AFT COUPLING PIECE KEYS)	4	4	—	—
68	SCREWED PINS (1/2 DIA)	STEEL	STOCK	1	1	—	—
68	SPANNER FOR COUPLING-PIECE	YGL	SEE SPECIFICATION	1	—	—	—

SWAN, HUNTER, &
WICHAM RICHARDSON LTD
ENGINEERING DEPARTMENT
NEPTUNE WORKS.
NEWCASTLE-ON-TYNE.
DATE

A.K.
AD+B.K.
23/10/28

T. S. S. "PORT DENISON"

N°
1318
DATE
23/10/28

THRUST SHAFT, WHEEL SHAFT
& COUPLING PIECE.

SCALES:- 1\"/>

73-0109

I being in two
an additional
rd has been
to cover any
ible waste.

Swan Hunter, Wigham
Richardson.

9. 1318.

Duplicate copy of shipping
for
S. S. S. "FORT DENISON."
Bauer - Wash Lubiner.

Port Denison
NEWCASTLE ON TYNE.

Report No. 94248.

W73-0109



© 2019

Lloyd's Register
Foundation