

# I. STEEL BOILER NO A124.

15/9/09

WORKING PRESSURE = 180 LBS PER SQ IN.  
TEST PRESSURE = 360 " " " " } LLOYD'S.  
SCALE 1 INCH = 1 FOOT

NOTE. ALL PLATES, STAYS & RIVETS TO BE OF SIEMENS MARTIN STEEL.  
ALL FLANGED PLATES TO BE ANNEALED AFTER FLANGING.  
ALL RIVET HOLES TO BE DRILLED IN PLACE AFTER THE PLATES ARE BENT.  
THE SCREW STAYS ARE 1 1/8 DIA. & 1 1/2 DIA EFF. SCREWED INTO BOTH  
PLATES AND NUTTED AT EACH END EXCEPT ON OUTSIDE OF SHELL  
WHERE THEY ARE CAULKED AS SHOWN. ALL SCREWED 10 THS PER INCH.  
THE TUBES ARE OF IRON. THE ORDINARY TUBES ARE 3 1/2 EXT DIA  
X 1/2 THICK IN BODY. 1/4 THICK EFF. SCREWED AT ENDS TO 3 1/2 X 3 1/2  
DIA. 10 THS PER INCH. THE ORDINARY TUBES ARE 3 1/2 EXT DIA X  
NO 8 L.S.G. THICK SWELLED 1/2 AT FRONT END.  
A MANHOLE IN SHELL 16 X 12 WITH SHORTER AXIS LONGITUDINALLY  
AND A DOUBLING PLATE 2'-7" X 2'-4" X 1/2 THICK FITTED ROUND IT.

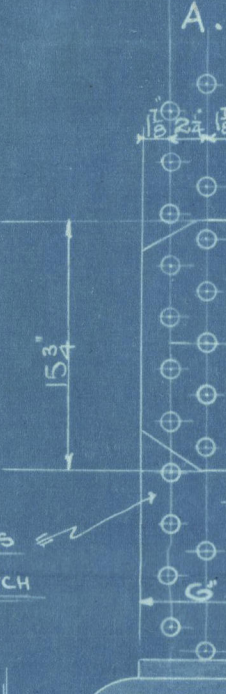
DOUBLING PLATE ROUND MANHOLE 1/2 THICK  
ALL 1/16 RIVET HOLES. INNER ROW COUNTERSUNK



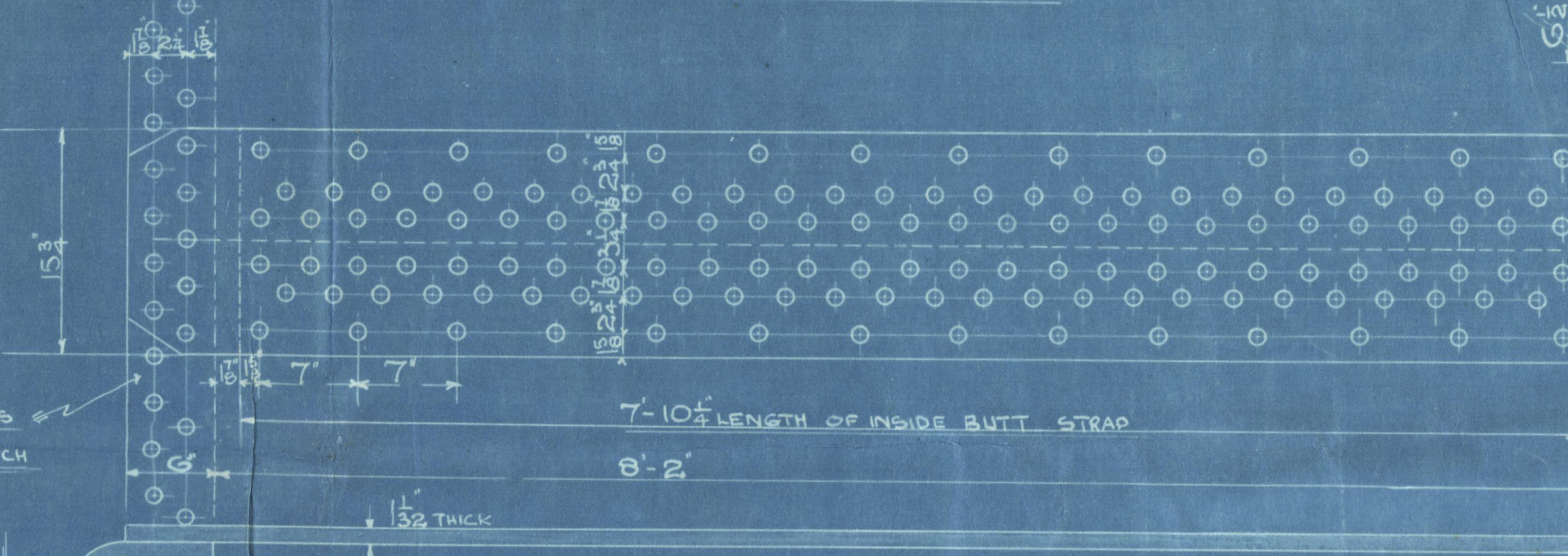
PLAN OF RIVETING  
FOR LOWER PART  
OF CIRCUMFERENTIAL  
SEAMS



PLAN OF RIVETING  
FOR UPPER PART  
OF CIRCUMFERENTIAL SEAMS



PLAN OF SHELL RIVETING  
1 1/8 HOLES 7 PITCH  
PERCENTAGE OF PLATE = 84.8  
PERCENTAGE OF RIVETS = 91.5



PLAN OF RIVETING  
FOR UPPER PART  
OF CIRCUMFERENTIAL  
SEAMS



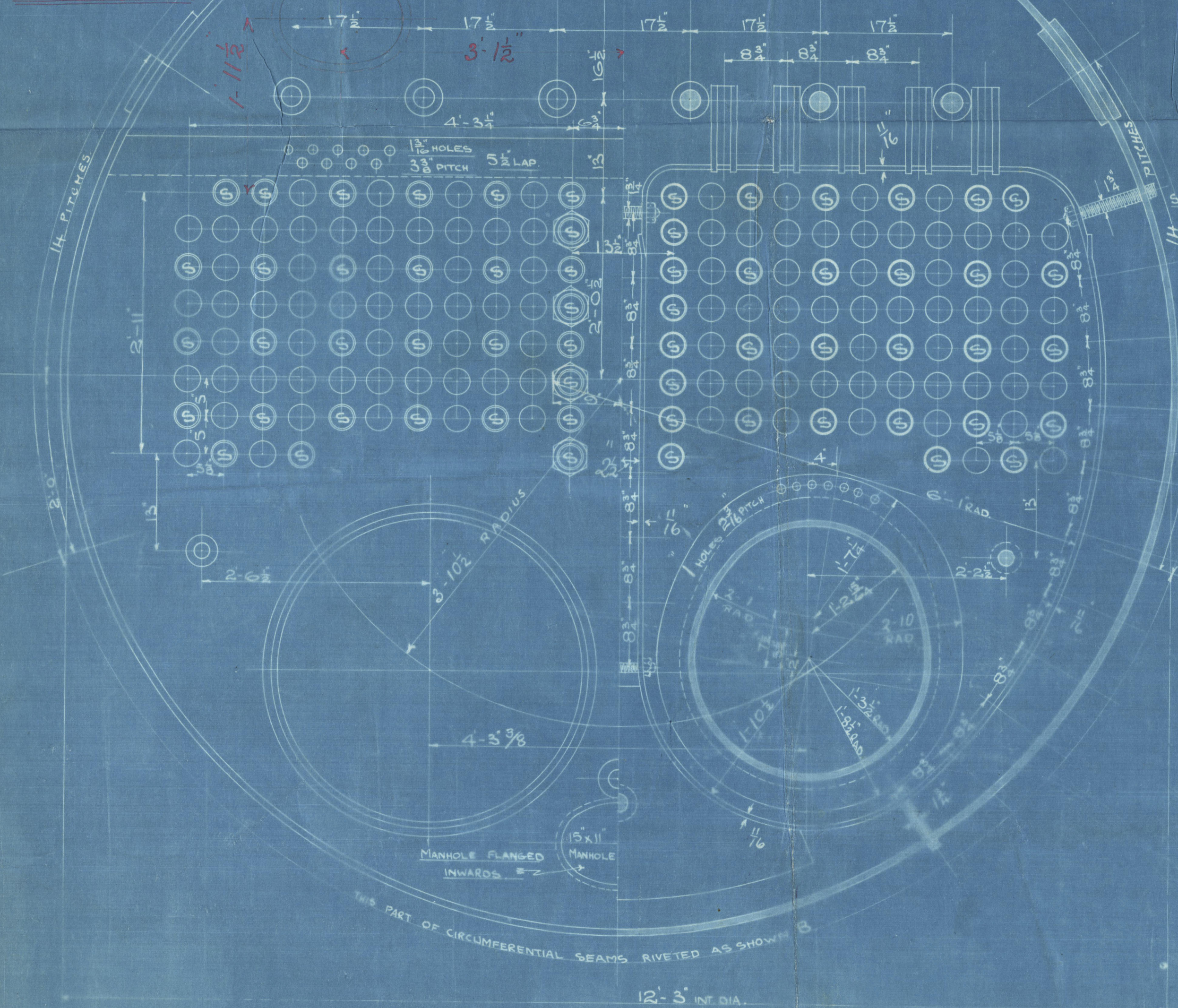
PLAN OF RIVETING  
FOR LOWER PART  
OF CIRCUMFERENTIAL  
SEAMS



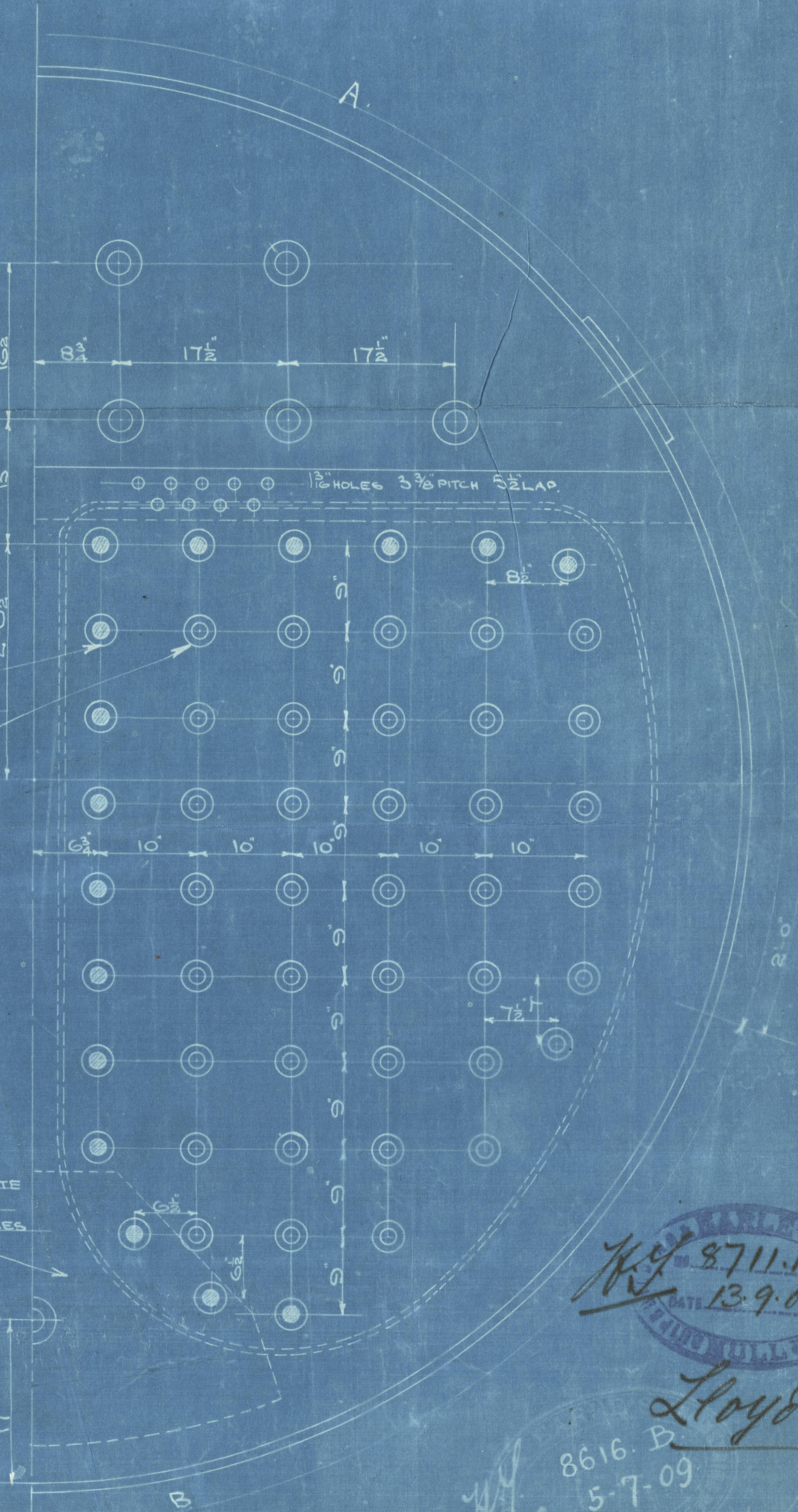
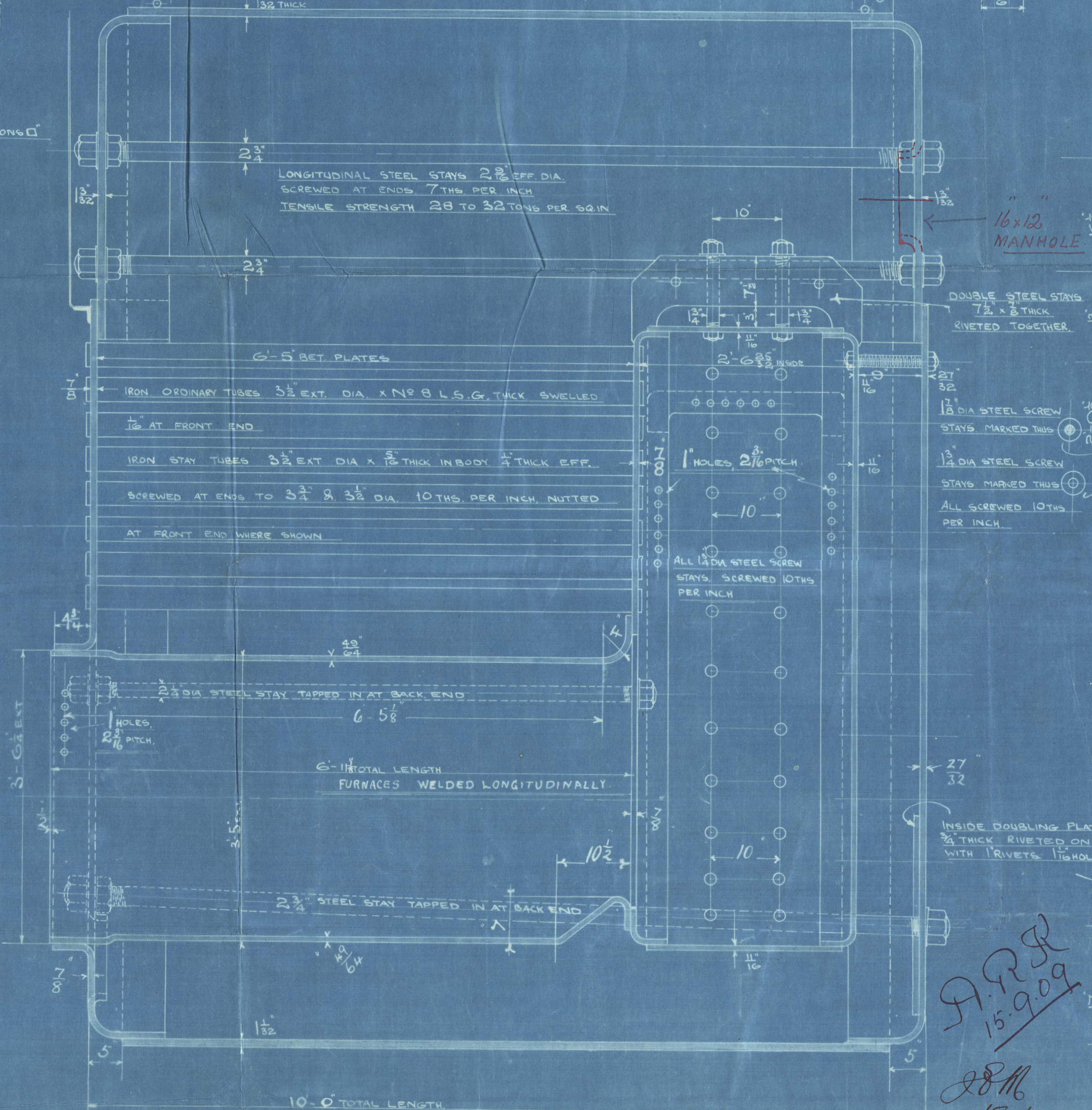
## DIMENSIONS

LENGTH OF FIRE BARS	5'-0"
AREA OF FIRE GRATE	13.5 sq ft
DIAM OF TUBES OUTSIDE	3 1/2"
LENGTH OF TUBES BET PLATES	6'-5"
NO OF TUBES	162
AREA THROUGH TUBES	8.3 sq ft
SURFACE OF TUBES	951 sq ft
TOTAL HEATING SURFACE	1200 sq ft
WORKING PRESSURE	180 LBS SQ IN

MANHOLE 16 X 12  
FLANGED INWARDS  
IN DATA END



SHELL PLATE 1/2 THICK  
INSIDE BUTT STRAP 1/2  
OUTSIDE BUTT STRAP 1/2  
TENSILE STRENGTH 28 TO 32 TONS PER SQ IN



A.R.R.  
15/9/09

8711.13  
13.9.09

Lloyds.

8616 B  
5-7-09

NO A124.

2021  
Lloyd's Register  
727-0103 dation



Boiler for.

Charles No 124 A

Goole S. B. Co. 129

Sc. Sr. Thames

No 1737

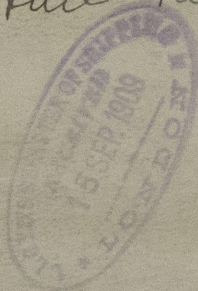
Lloyds Test.

360 lbs. □

J. B.

21. 3. 10

Hull Report No 22797



© 2021

Lloyd's Register  
Foundation

W727-0103