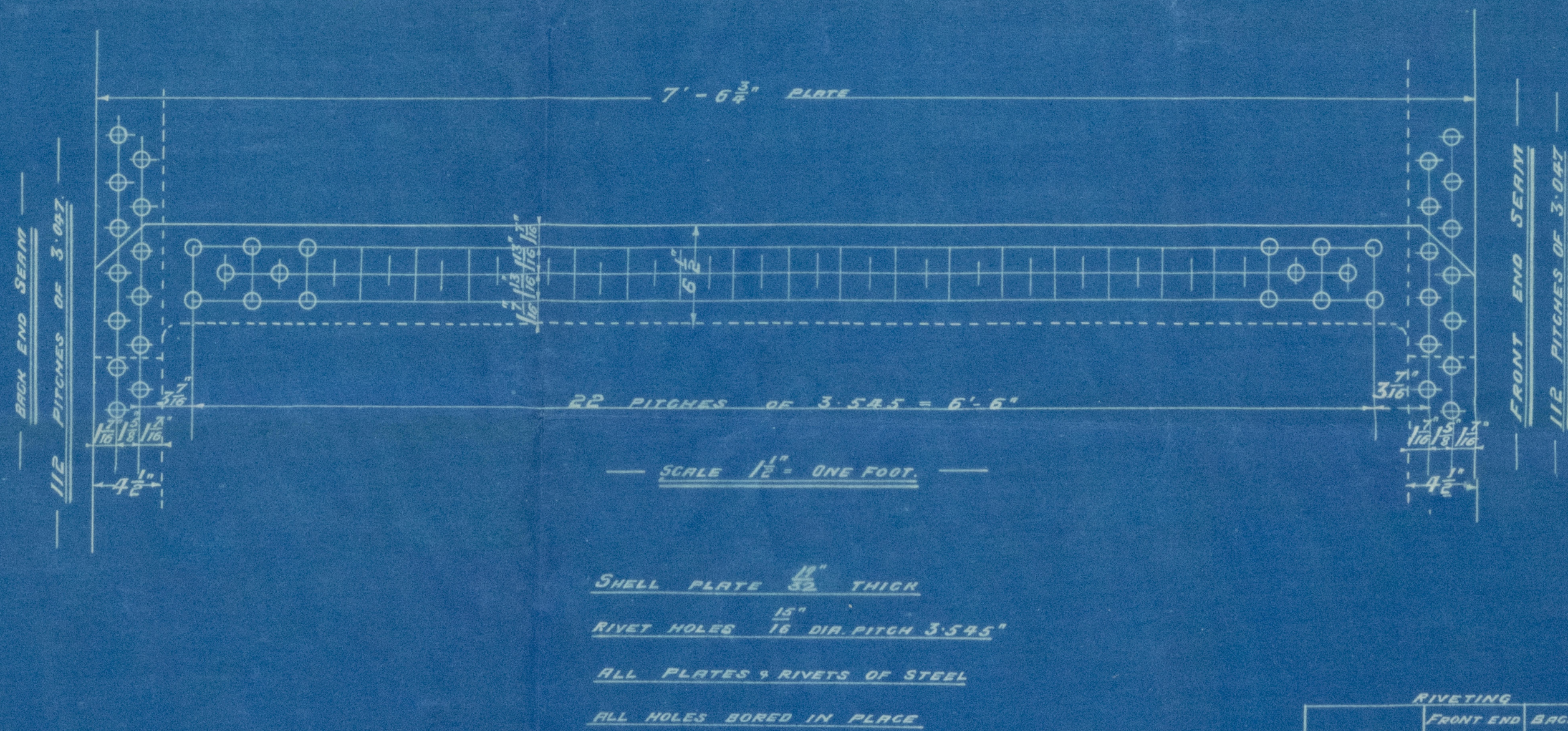


29.9.05

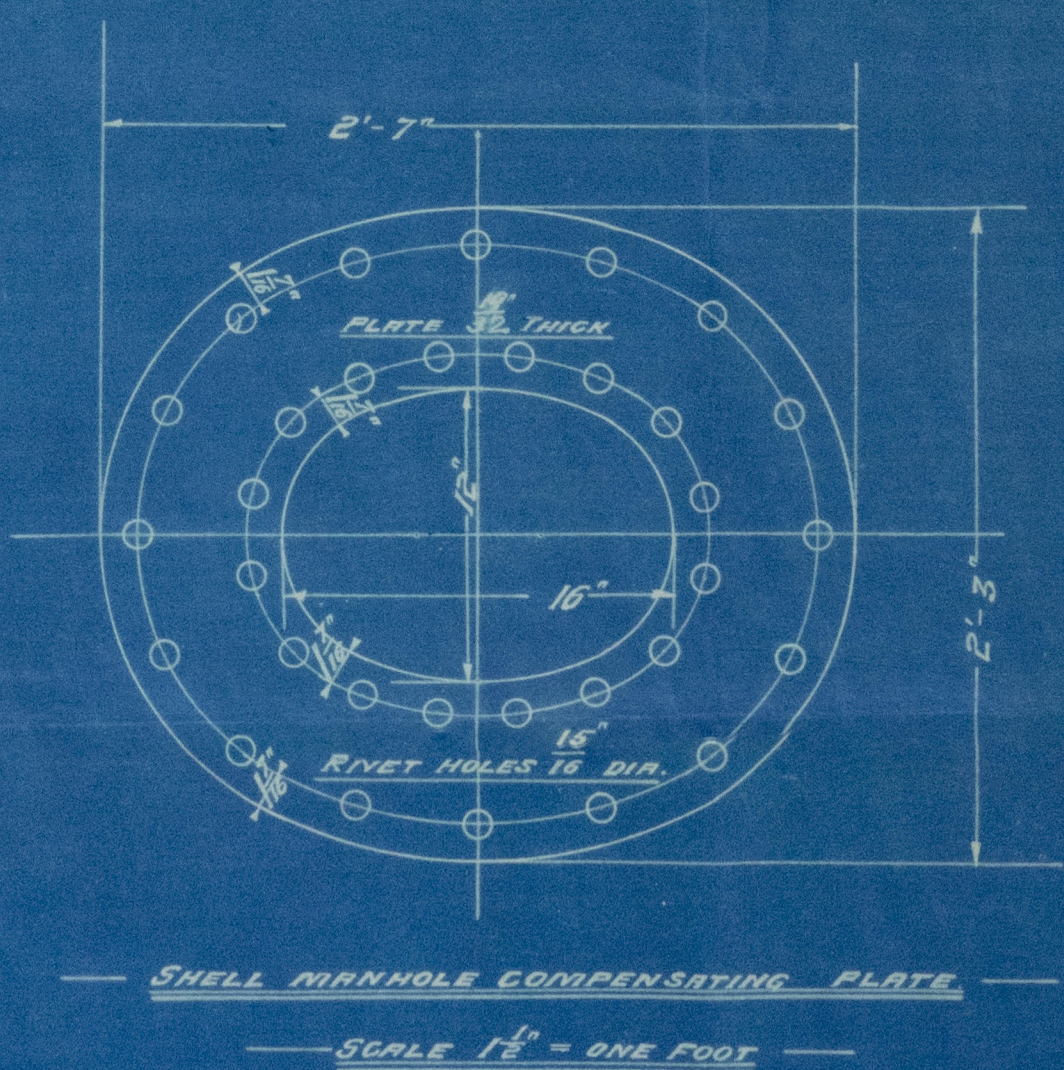
THICKNESSES		
SHELL	STEEL	19/32
END PLATES	"	3/4"
BACK TUBE PLATE	"	5/8"
FIREBOX BACK	"	1/2"
" TOP & SIDES	"	3/16"
BOTTOM	"	3/16"
GIRDERS	"	3/16"
FURNACES	"	3/16"
MANHOLE DOOR	"	3/16"

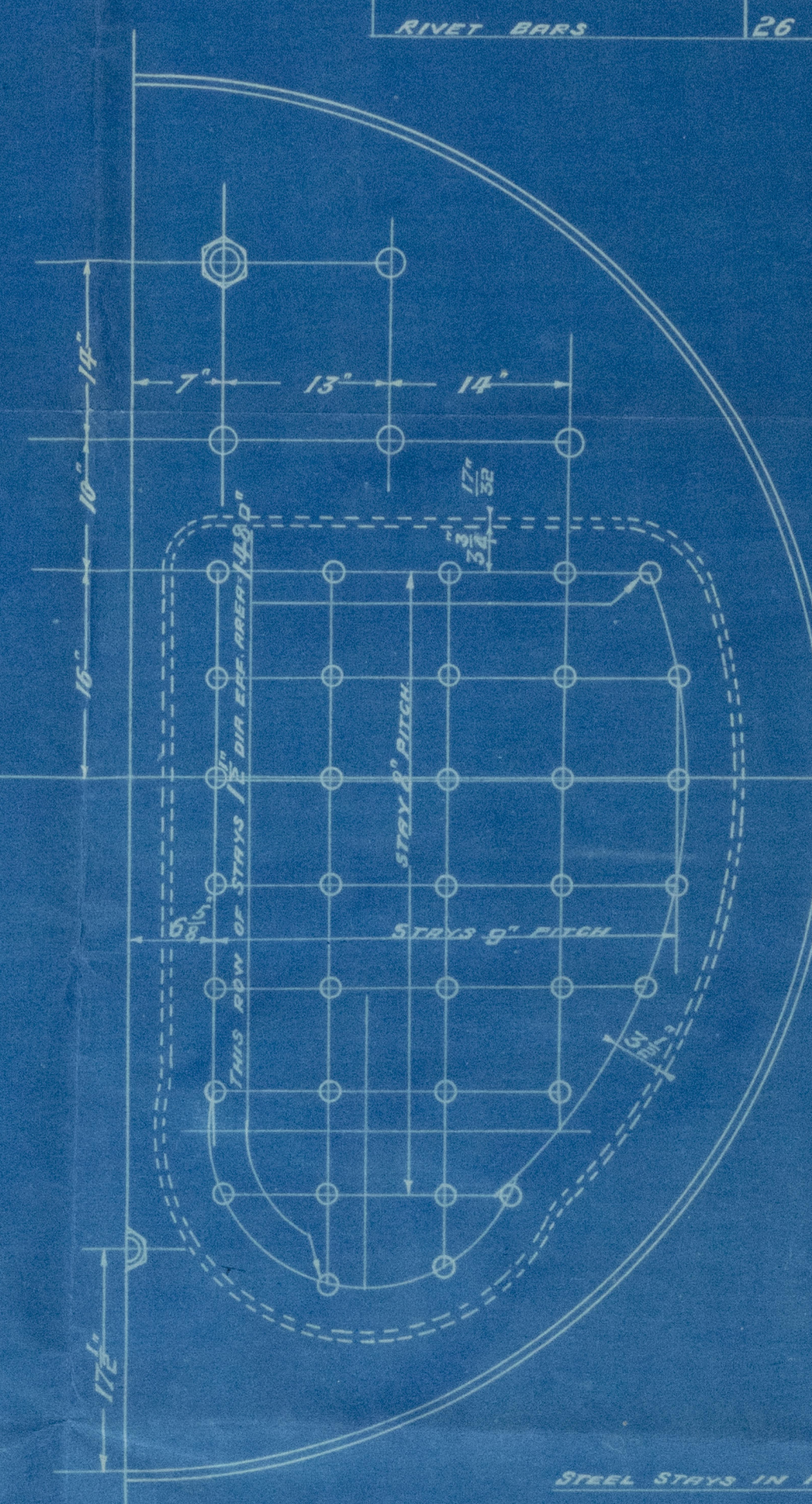
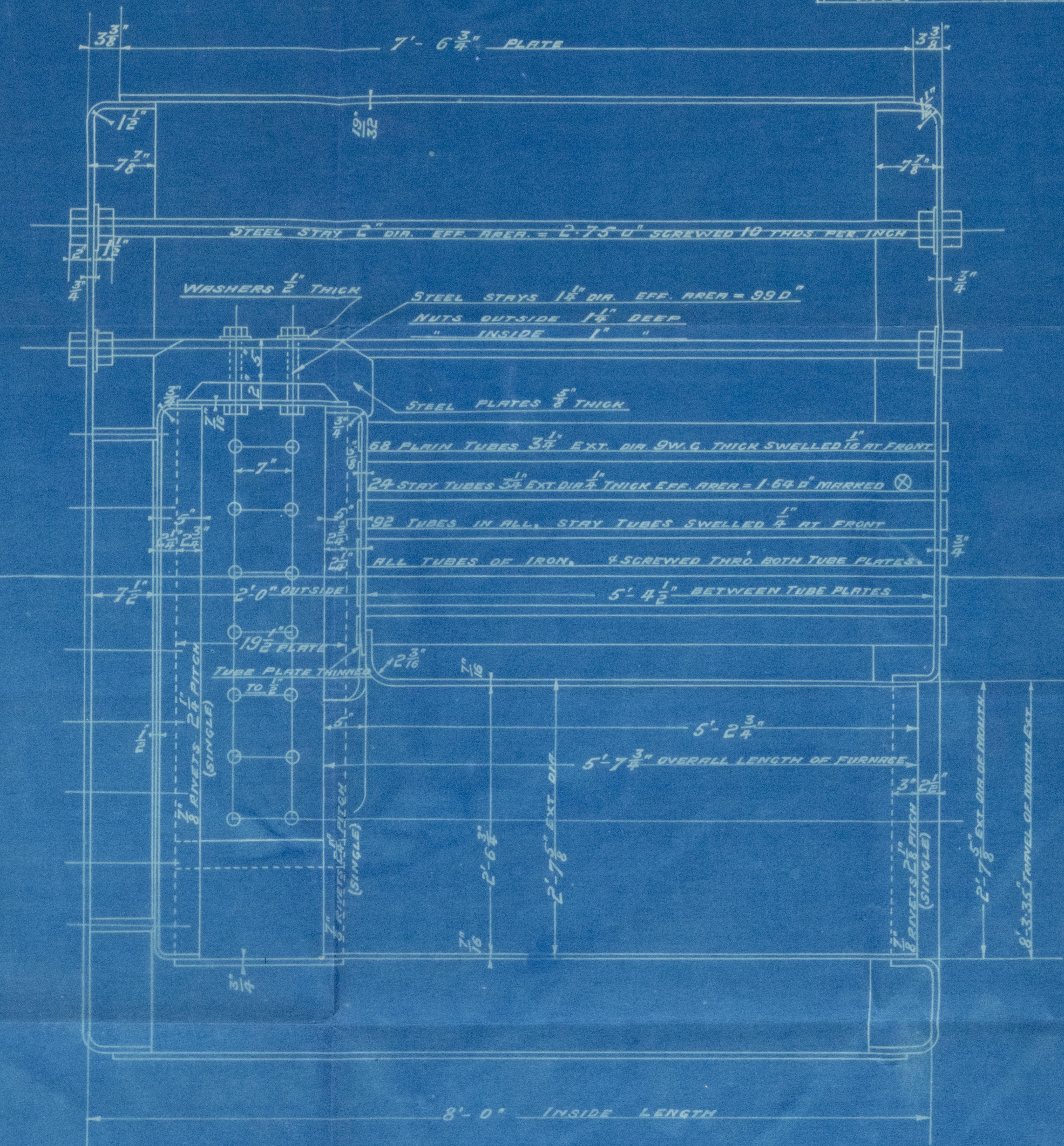
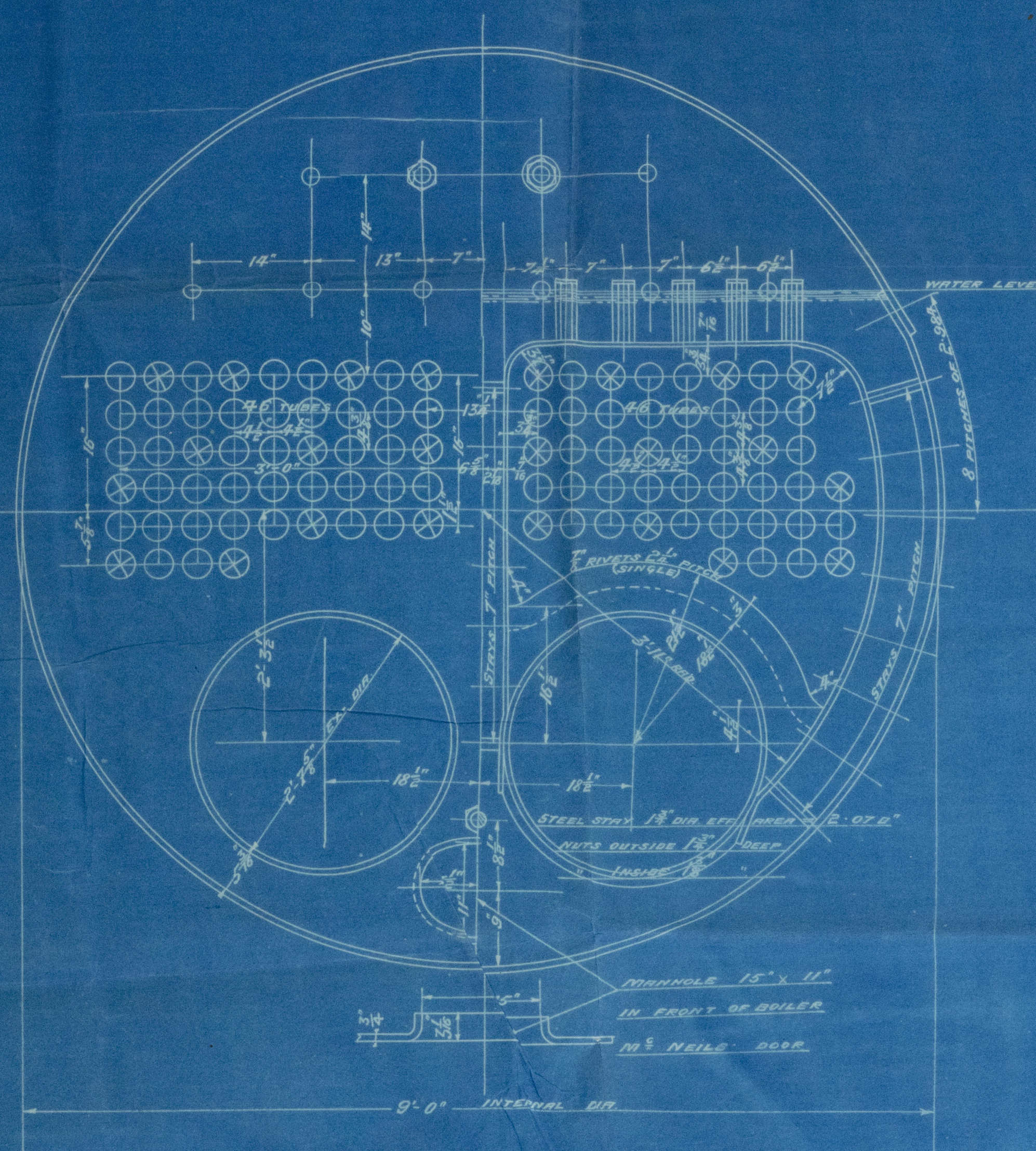
SURFACES ETC.		
92 TUBES @ 4-STY		2205 £
FURNACES		23.5 £
FIREBOXES		65
TOTAL HEATING SURFACE		550 £
GRATE AREA @ 2'-6 3/4" DIA		23 £
TUBE AREA		
WATER		53 £
STEAM SPACE		103 £
RATIO GRATE AREA TO HEATING SURF.		
" " " " " TUBE		
" " " " " AREA		
" " " " " WATER		
" " " " " STEAM SPACE		
% BOILER ABOVE FIREBOX		31.5
LENGTH OF FIREBOX		4'-6"
WEIGHT OF WATER		



	RIVETING		
	LONG JOINT	SEAM	BACK END
DIA OF RIVETS	7/8"	1 1/8"	1 1/8"
PITCH	3'-5 1/2"	3'-0 1/2"	3'-0 1/2"
% PLATE	75	80	80
% RIVET	70.3	84.7	84.7



TENSILE STRENGTHS	
SHELL PLATE	28 TO 32 TONS PER Q"
OTHER "	26 " 30 " "
MAIN STAYS	27 " 32 " "
SCREW "	26 " 30 " "
FURNACES	26 " 30 " "
RIVET BARS	26 " 30 " "



STEEL STAYS IN FIREBOX TOP  
SIDES & BACK 1 1/2" DIA. EFF. AREA = 39 Q"

OUTER ROW IN FIREBOX BACK  
1 1/2" DIA. EFF. AREA = 1.68 Q"

ALL NUTS 1" DEEP

ALL STAYS SCREWED TANG BOTH  
PLATES WITH NUTS AT EACH END

**DONKEY BOILER.**  
**CON<sup>T</sup> N<sup>O</sup> 441.**

1 - OFF

WORKING PRESSURE 100 LBS. PER Q"

TO PASS LLOYDS SURVEY.

SCALES 1" & 1 1/2" = ONE FOOT





W725-005 1 1/2

From DAVID ROWAN & CO., GLASGOW.

ENCLOSURE

FOR

Foundation

Messrs Lloyds Surveyors

D. Rowan & Co's

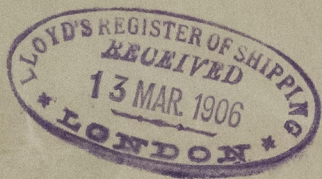
No. 441



Winga

S-S. Winga

pls. rft. No. 23569



RETAIN



© 2021

Lloyd's Register  
Foundation

W725-0051