

22:11:06

BOILER ORDER No 2181

From The North Eastern Marine Eng. Co. Ltd. to C. 1420

To be constructed to class Lloyd's, 9, Lombard Place, London

1 off thus

Nov. 1906

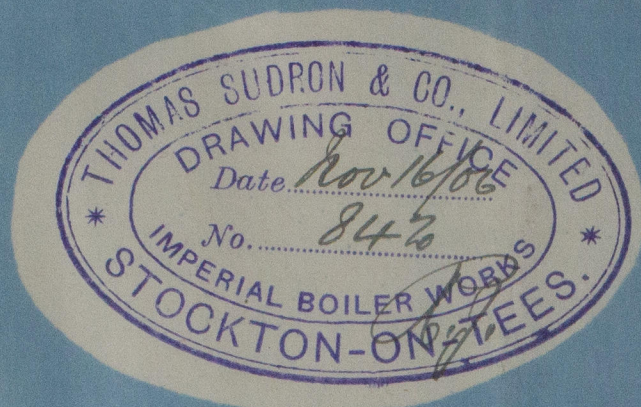
Made by Messrs John Spencer & Son

Plates Steel

Rivets "

Tubes Iron

all Iron



Heating Surface	Sq. ft.
Tubes	432 40.1 m
Furnaces	66 6.14 m
Combustion Chambers	68 6.31 m
Tube Plates	25 2.32 m
Total	591 Sq. ft. 54.34 m

Total Grate Surface 26 1/2 Sq. ft.

Furnaces 5'0" long

Working Pressure 90 lbs per sq. inch

Test do 180 " " "

Plan of Shell Riveting

Strength of Joint

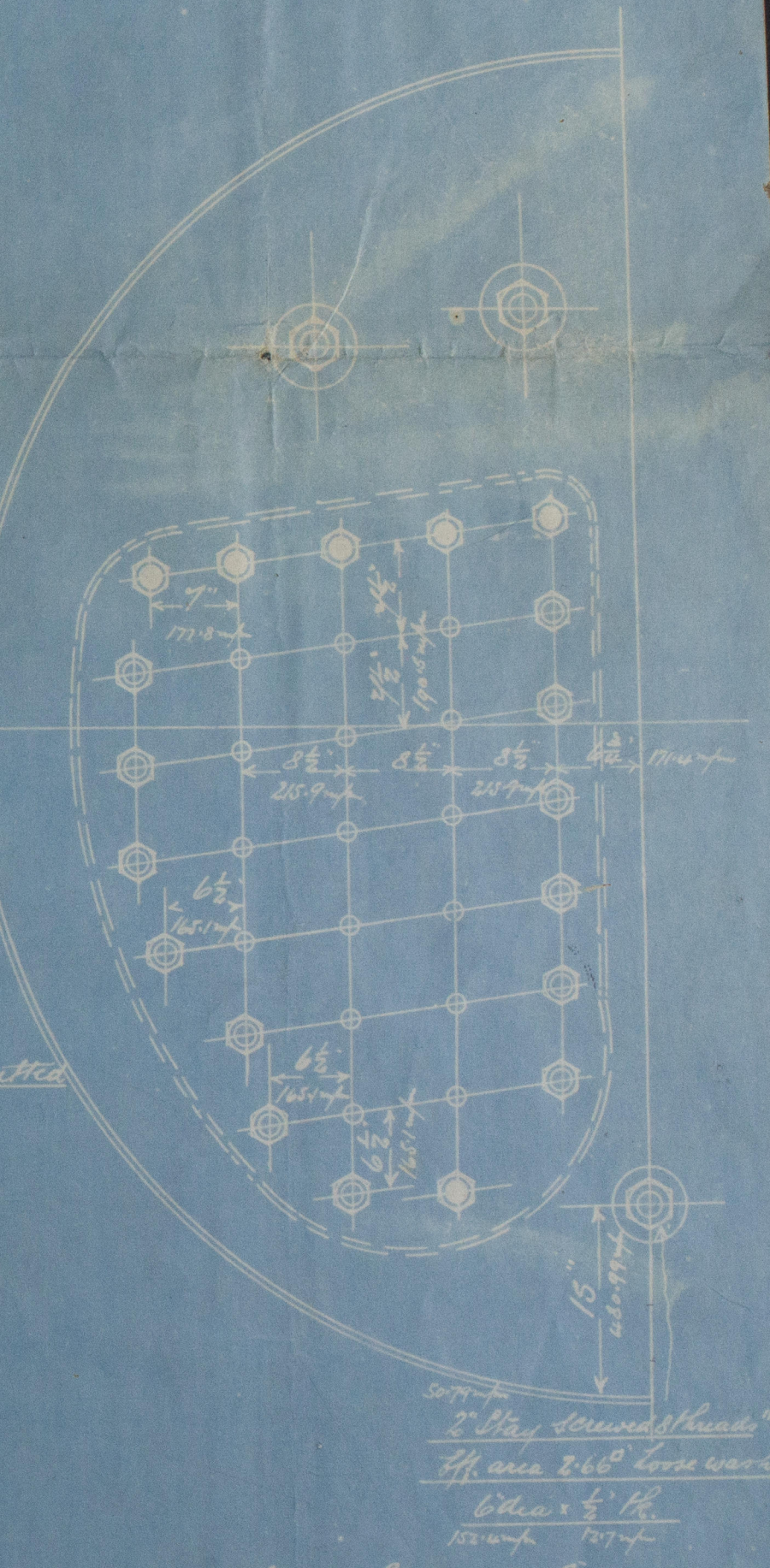
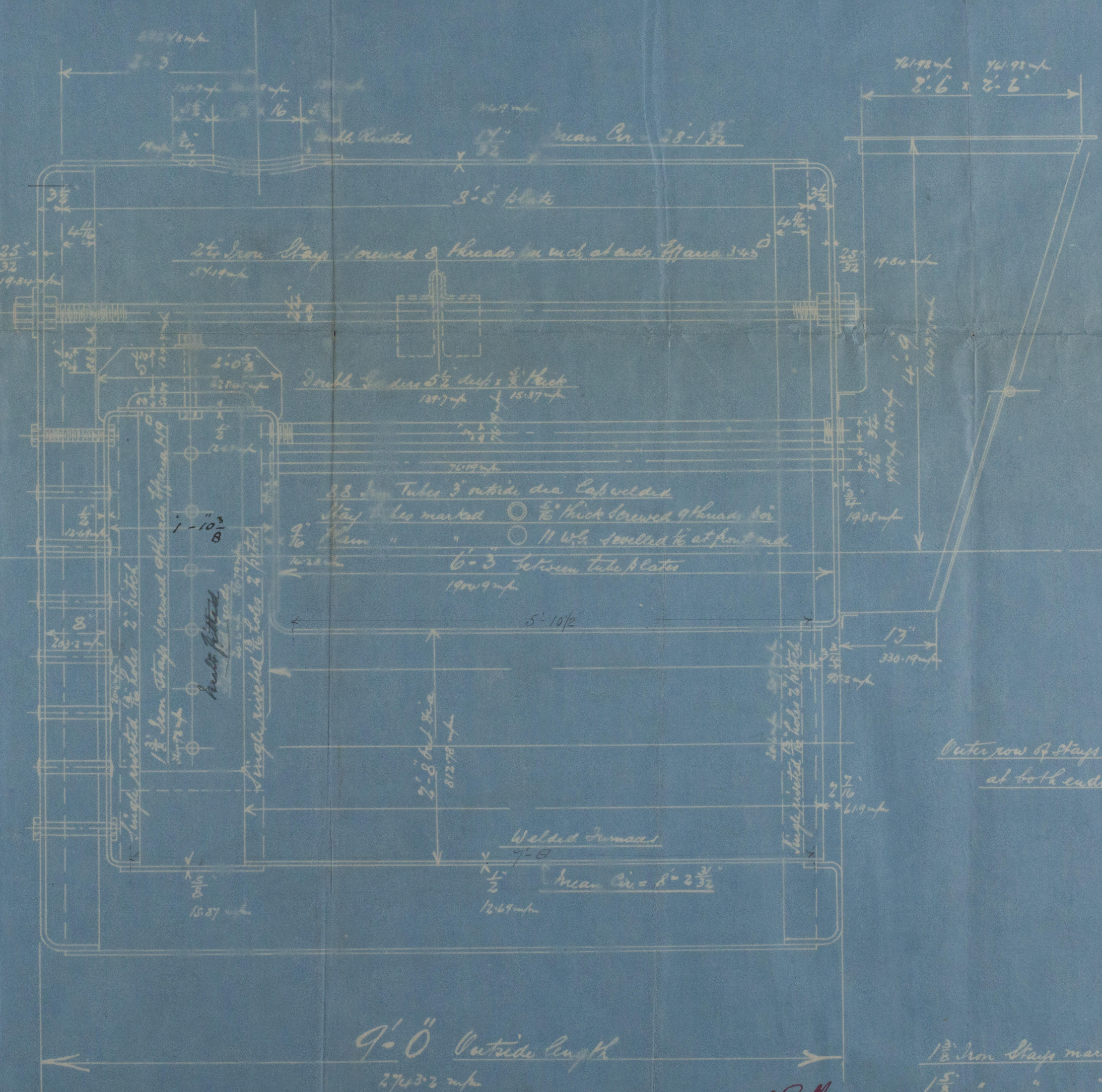
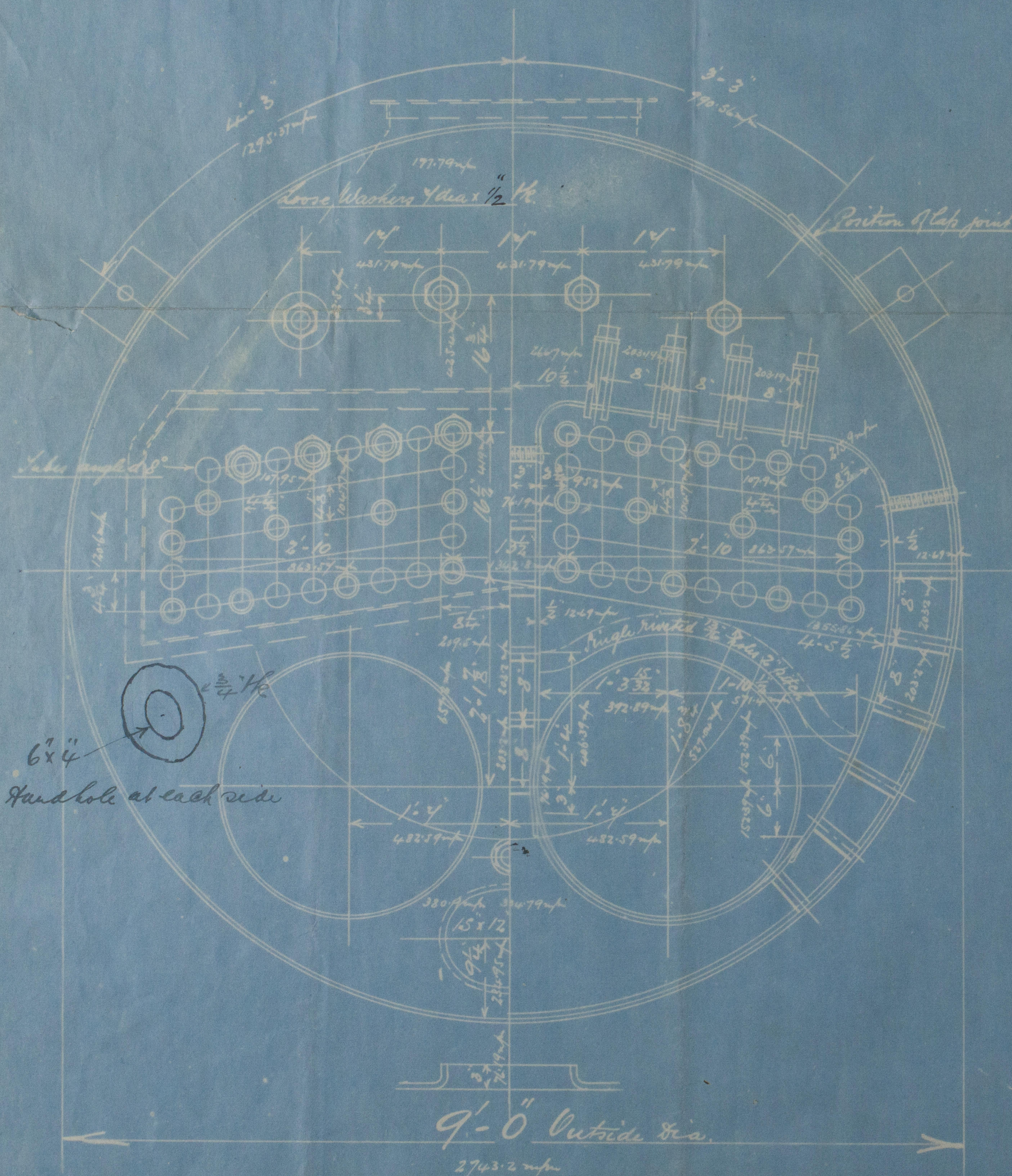
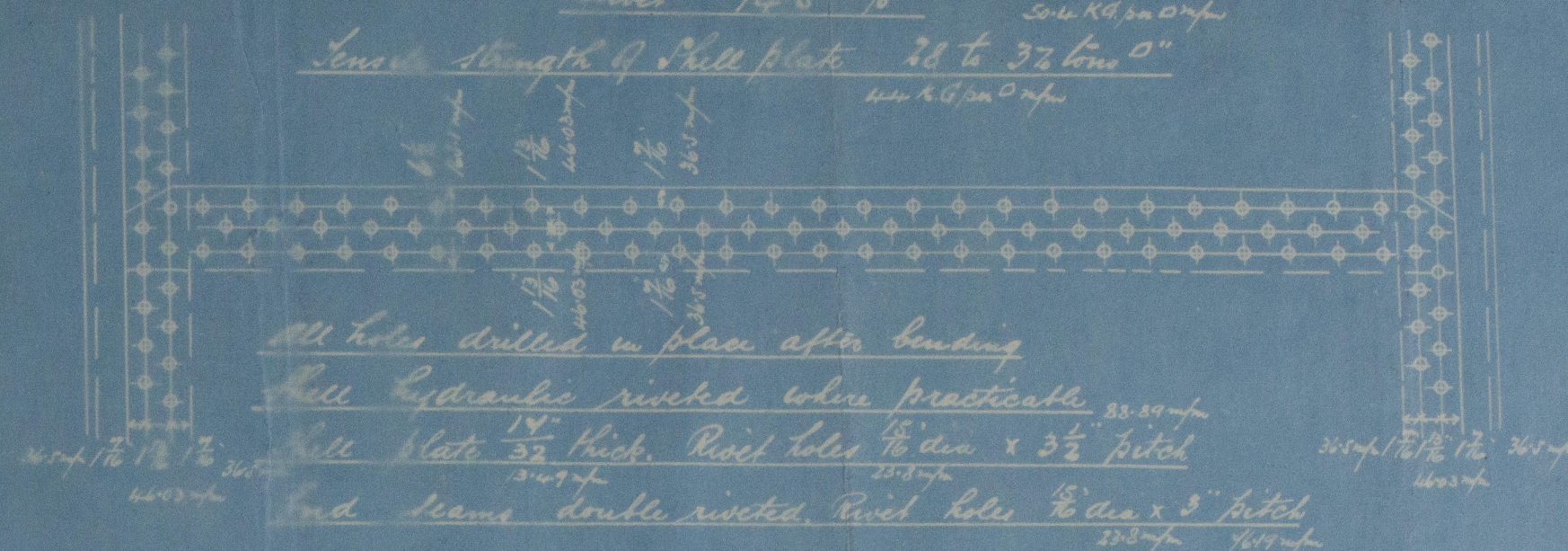
Plate 73.3 %

Rivet 94.5 %

50 lb 100 lb 200 lb

Length of Shell plate 38 to 39 tons

50 lb 100 lb 200 lb



21/11/06

Stays to have riveted heads except where shown
Lloyd's Register
Foundation

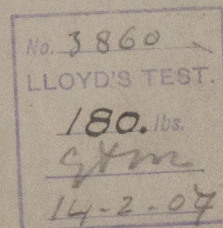
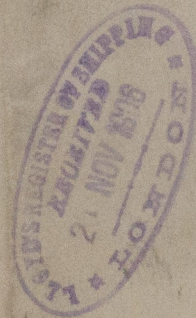
J. Sudron & Co^{rs}

No 2181

For N E Marine Corp Co^{rs}
Contract 1725

W. P. 90 lbs

Mello report No. 4944



RETAIN



© 2021

Lloyd's Register
Foundation
No 712-0094