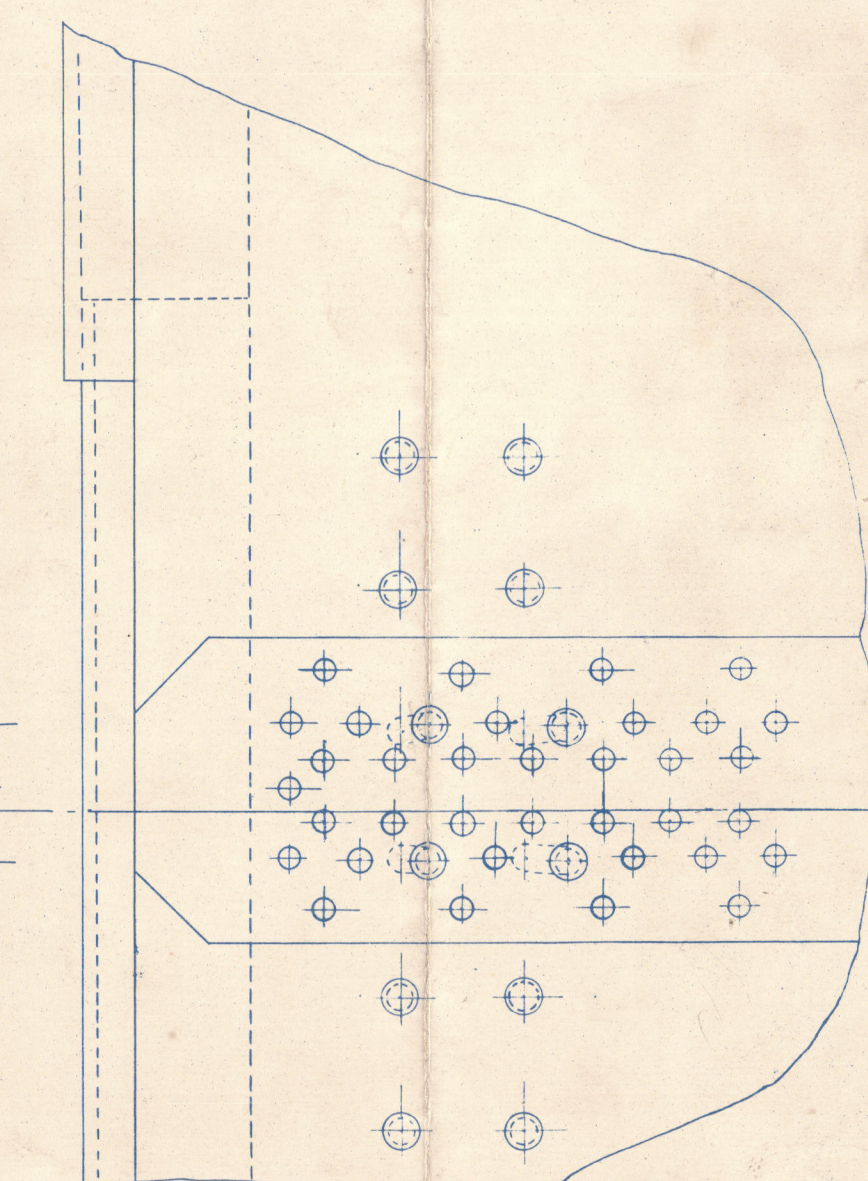
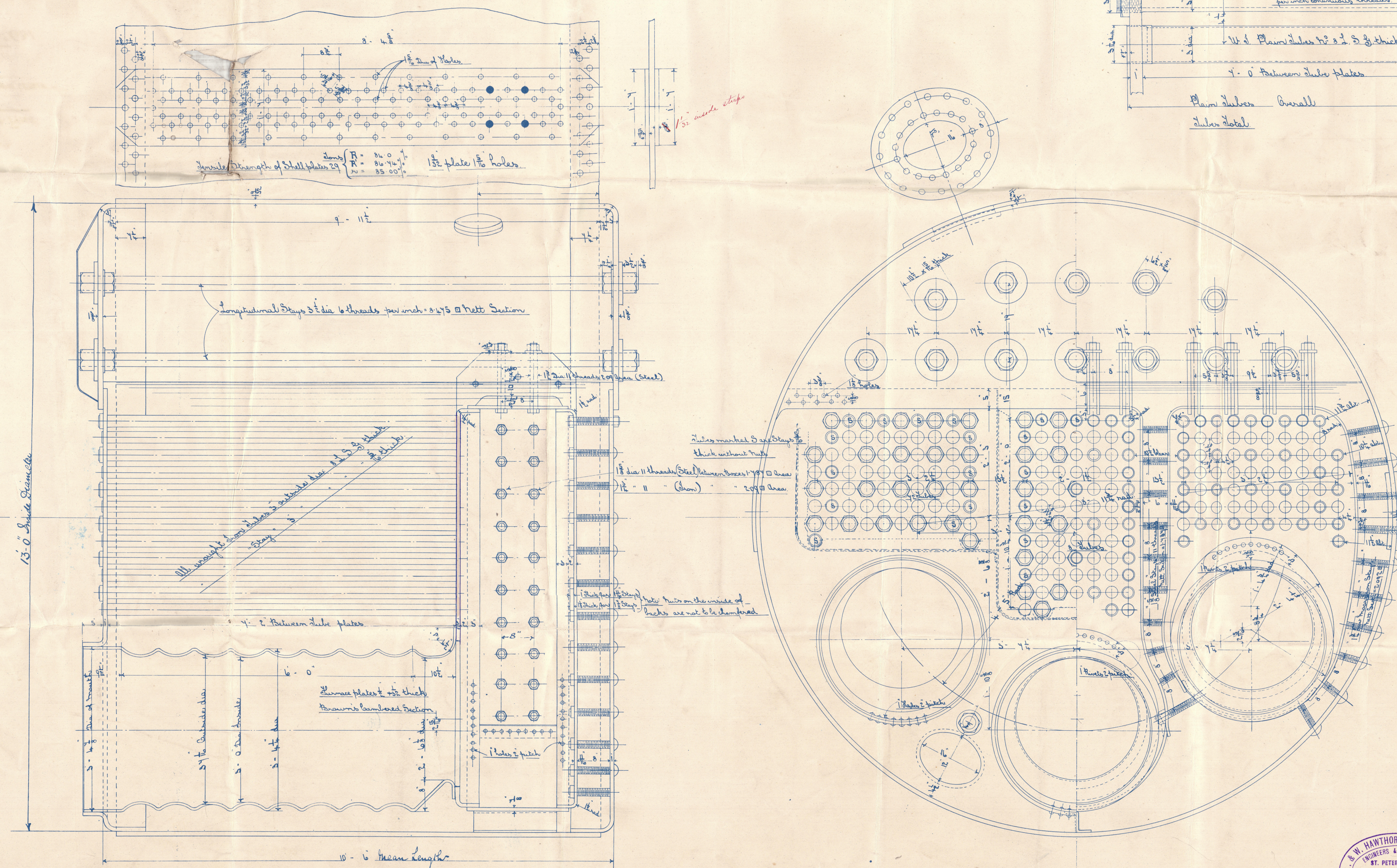
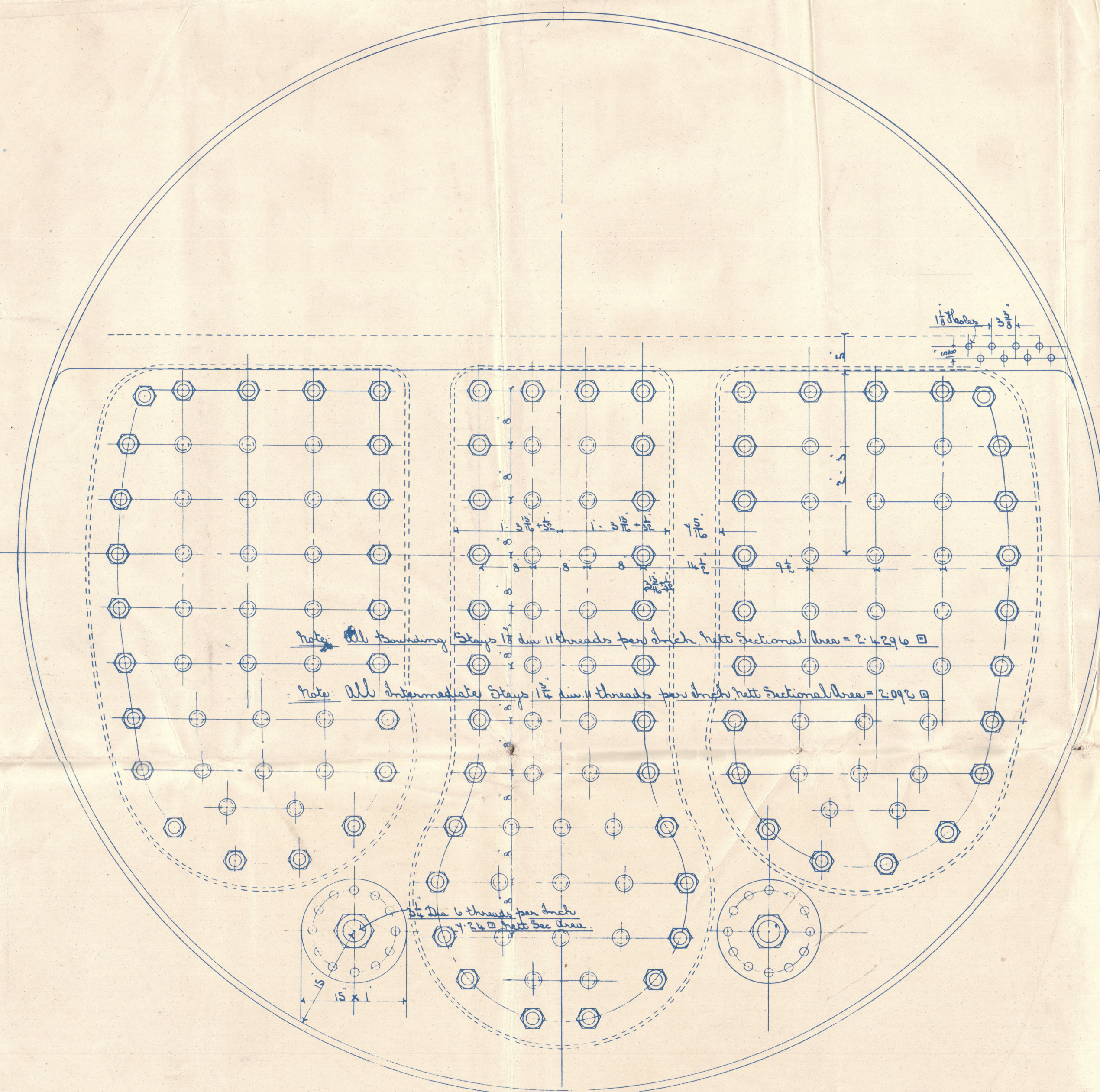
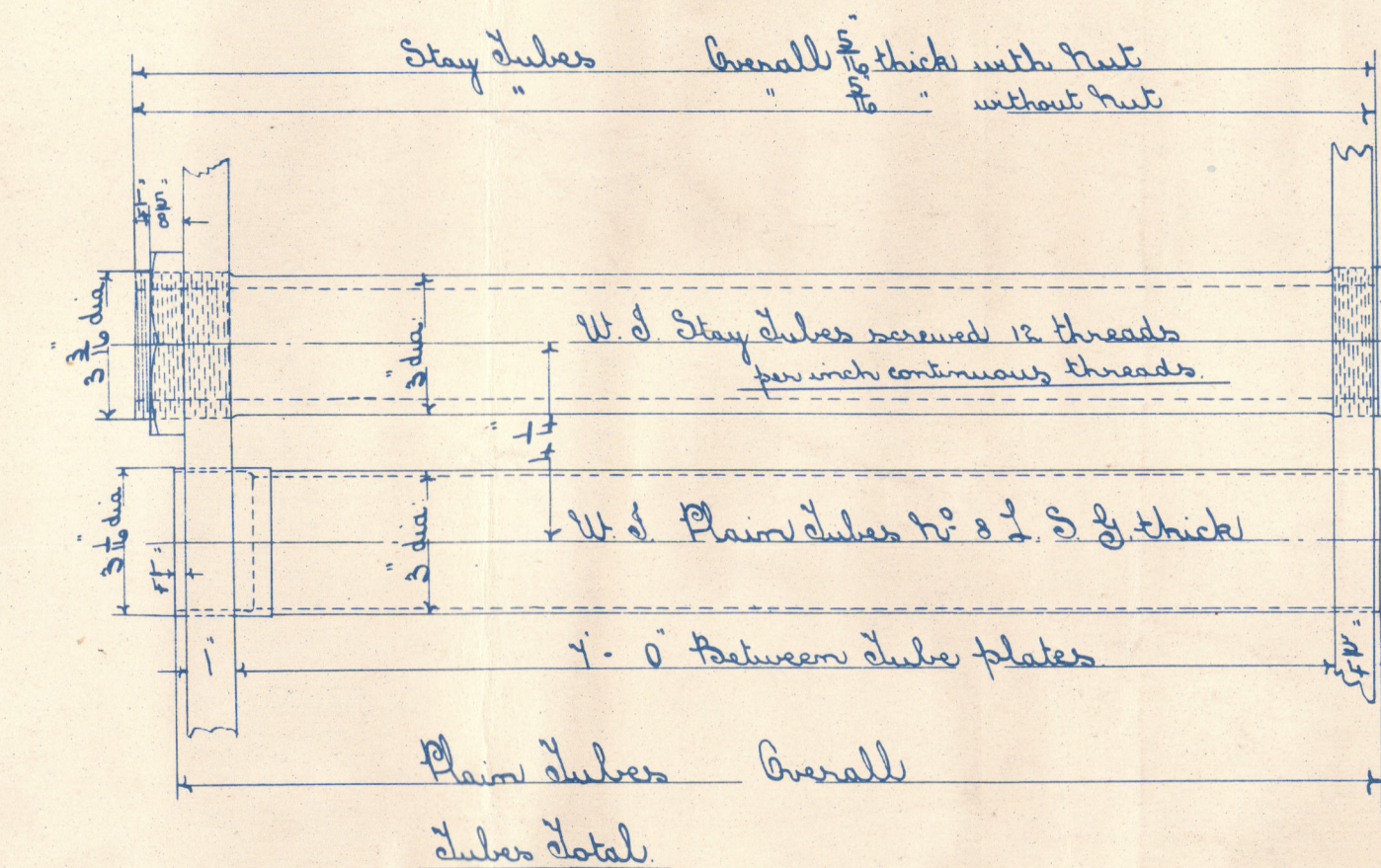


AUXILIARY BOILER

Working Pressure 200 lbs. Test pressure 400 lbs.
To meet of ASME & Lloyd's requirements.
All material of Steel, except where otherwise specified
All plates drilled on place.
Minimum tensile strength of shell plates 29 tons.

Working Surface in	Chutes	Plate Surface	
"	Stumps	Water	
"	Bank Chambers	Area thru Chutes	8.4
"	Bank T Plats	Steam Capacity	6.1



ENCLOSURE TO

Lloyd's Register
Foundation

From R. & W. HAWTHORN, LESLIE & CO. Ltd.,
ST. PETER'S WORKS, NEWCASTLE-ON-TYNE.

S.S. "Yurakina"
NEWCASTLE-ON-TYNE

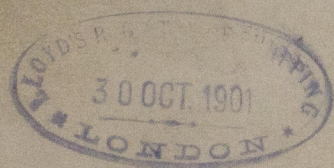
Messrs. R. W. HANTHORN, LESLIE & CO.

AUXIL. BOILER

ORDER N° 631

ENGINE

N° 2495



No 6304
Kloy de Lent
400 k
S H 4
29-4-02.

RETAIN

W713 - 0073



S.S. "Yurakina"
Siemens & Co
S H 4, 089



© 2020
Lloyd's Register
Foundation