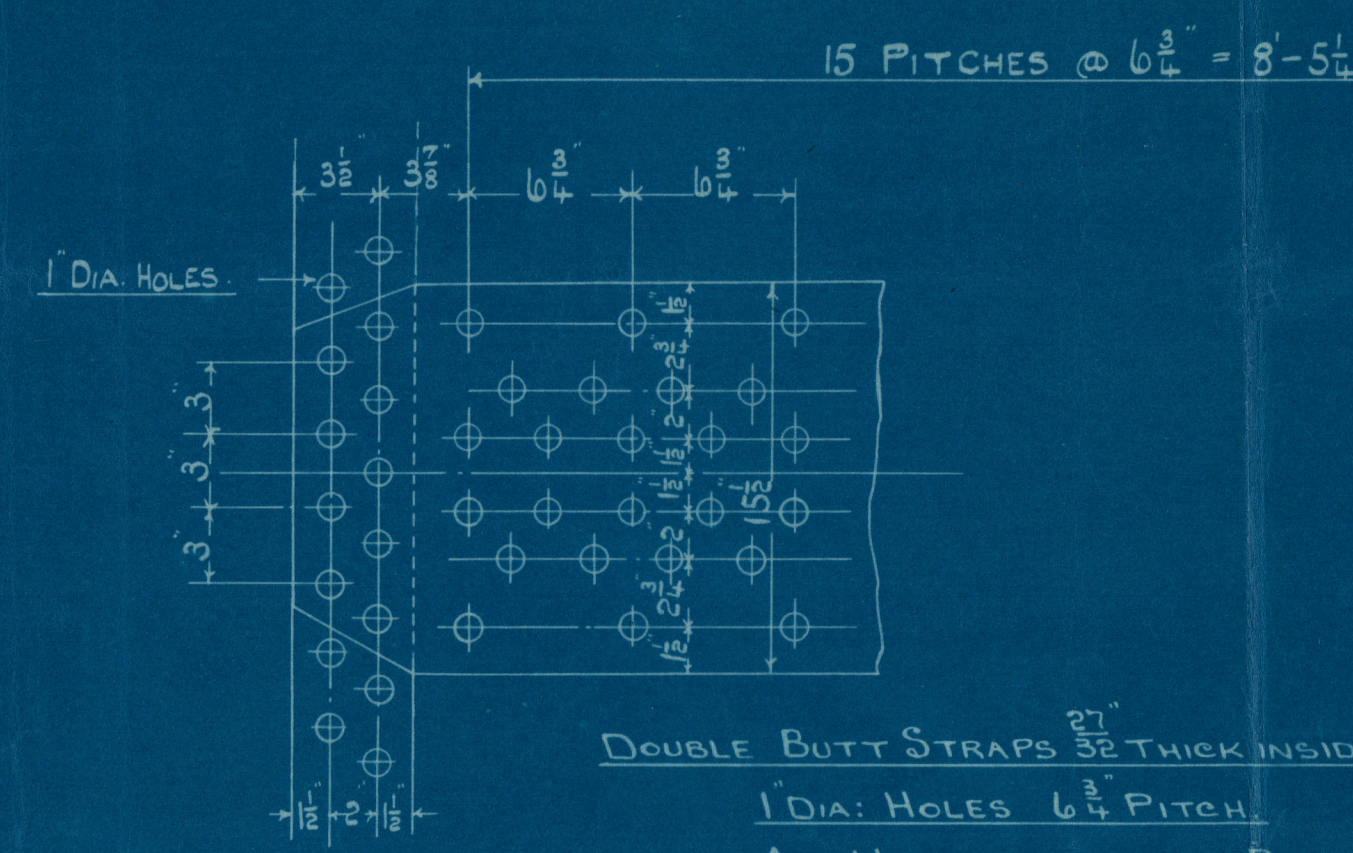


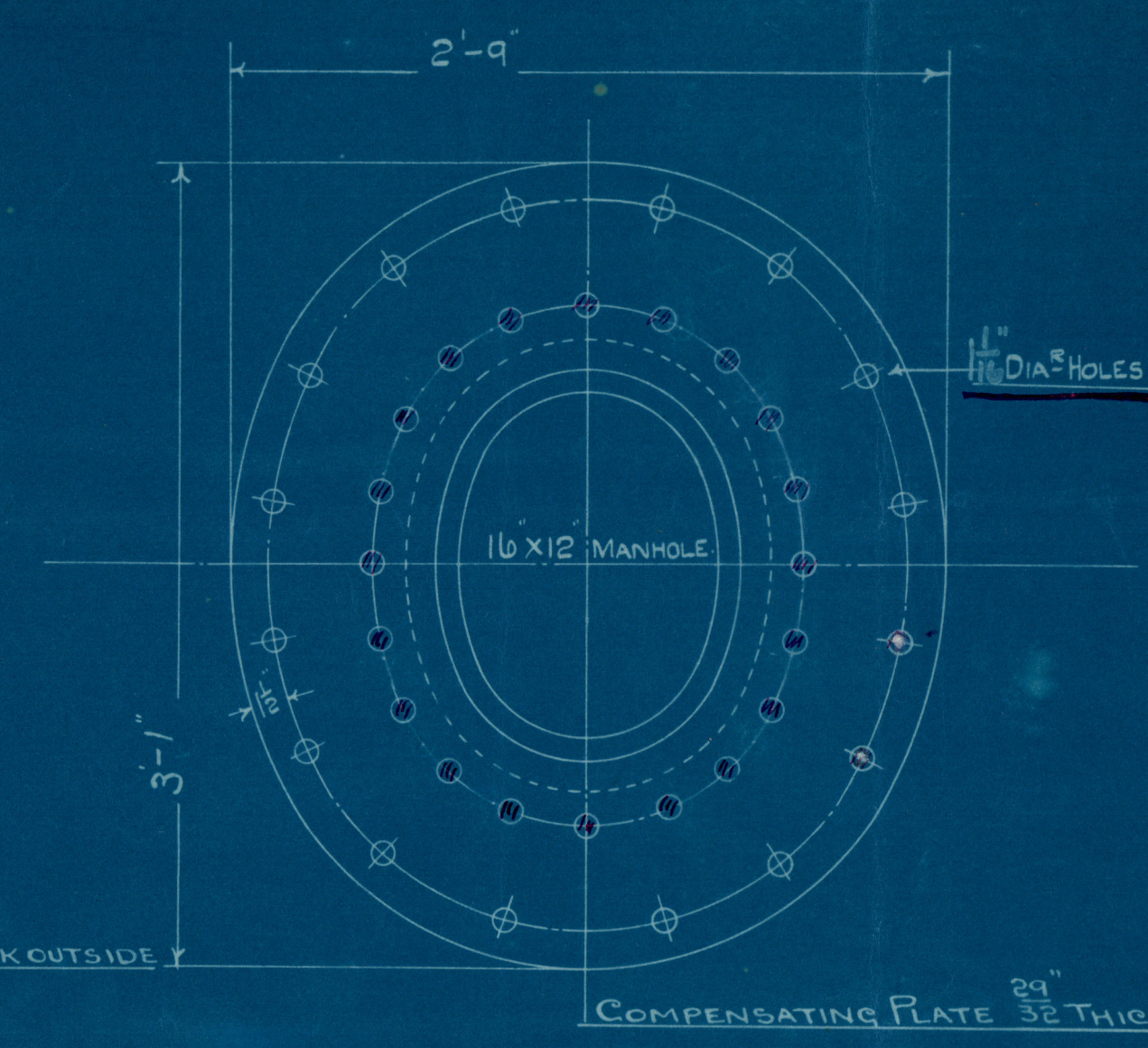
Screwed continuous thread 9 threads per inch.
 7/16 stay tubes thus with 1/8 thick working off spare.
 28 X 3/16

PARTICULARS OF BOILER		ONE B.L.	TWO B.L.
HEATING SURFACE	TUBES	790	
	FURNACES	83	
	8" COMB. CH.	40	
	8" T.V. PLATE	23	
	SIDES OF C.C.H.	62	
	FRONT T.V. P.	16	
	TOTAL	1014	2028
GRATE AREA	3'-0" X 5'-6" BAR	33	66

TESTS OF MATERIAL	
SHELL PLATE	28-32 TONS
COMPENSATING PLATE	28-32 TONS
BUTT STRAPS	28-32 TONS
ALL COMB. CH. PLATES	28-32 TONS
PLANING PLATES	28-32 TONS
FURNACE	28-32 TONS
GIRDERS	28-32 TONS
LONGITUDINAL STAYS	28-32 TONS
SCREWED STAYS	28-32 TONS

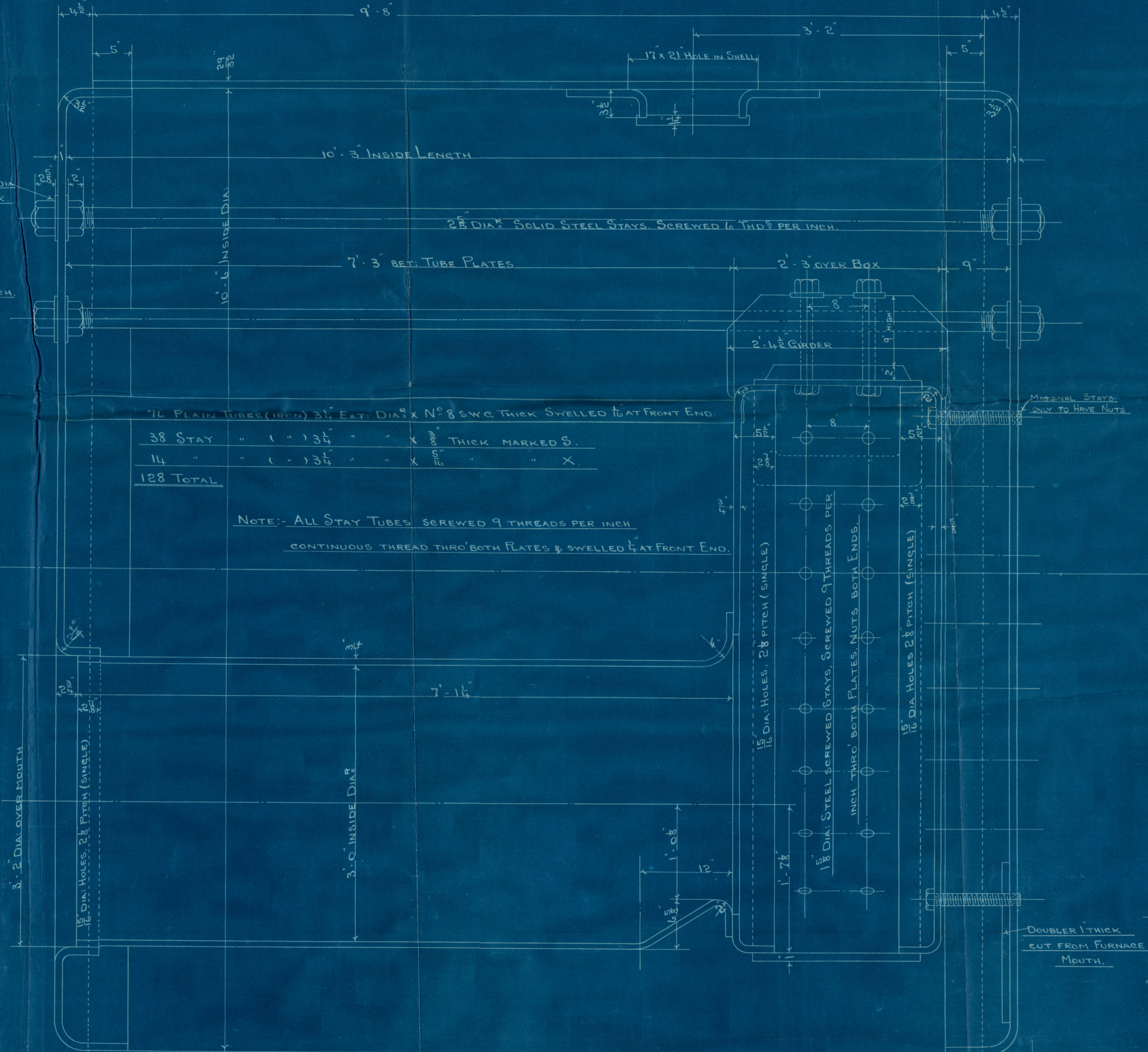


DOUBLE BUTT STRAPS 1/2 THICK INSIDE 1/2 THICK OUTSIDE
 1 DIA. HOLES 6 1/2 PITCH
 ALL HOLES DRILLED IN PLACE
 TENSILE STRENGTH OF SHELL & BUTT STRAPS 28-32 TONS
 TO PASS 1-40709 SURVEY
 W.P. 180 LBS PER SQ. IN.
 TEST PRESS 360 LBS PER SQ. IN.



MARK	DESCRIPTION	NO. OFF	DIMENSIONS	REMARKS
1	SHELL PLATE	2	33-3 1/2 x 9-5 1/2 x 3/4	1/2" THICK
2	BUTT STRAPS OUTER	2	9-5 1/2 x 1-1/2 x 1/2	
3	" INNER	2	9-1 1/2 x 1-1/2 x 1/2	
4	COMPENSATING PLATE	2	3-1/2 x 3-0 x 1/2	
5	MANHOLE DOORS	4	1-9 x 1-5 x 1/2	
6	GIRDERS	32	2-5 x 1-2 x 1/2	
7	BACK TUBE PLATE	4	7-0 x 5-0 x 1/2	1/2" THICK
8	Box	4	x x x	
9	FRONT & BACK END PLATES	4	11-9 1/2 DIA. x 1" THICK	
10	CC BOTTOM & SIDES	4	10-4 1/2 x 1-1/2 x 1/2 + 11-1/2 x 5-1/2	

16	steam space stays	2 3/4 dia x 10-11 1/2 long	28-32 TONS
17	"	2 1/4 " x 10-10 1/2 "	
18	water	3 " x 11-0 "	
19	Boiler stays	2 " x 7-9 1/2 "	
20	secured	1 3/8 " x 12-0 "	28-30
21	"	1 1/2 " x " "	



BOILER. 2 - OFF
 SCALE 1 1/2" = ONE FOOT

ENCLOSURE TO
 Messrs. Anglo Siam
 FROM R. & W. HAWTHORN, LESLIE & CO., LTD.
 ST. PETERS WORKS, NEWCASTLE-ON-TYNE.
 W712-0012 1/2



ORDER NO. 8050

Compensation Ring?
manhole door awarded
As to Rwhet area

S. S. CANTERBURY BELL
NEWCASTLE ON TYNE.

Report No. 72051.



© 2021

Lloyd's Register
Foundation