

Telephones: Central 9280 (18 lines)

Telex: Central 8215

Telegrams: "Colvillett, Glasgow"

WORKS:

DALZELL STEEL WORKS, Motherwell.

CLYDEBRIDGE STEEL WORKS, Cambuslang.

GLENGARNOCK IRON & STEEL WORKS, Glengarnock.

CLYDE IRON WORKS, Tolleross, Glasgow, E.2.

MOSSEND WORKS, Bellshill.

COLVILLES LTD.,

195 WEST GEORGE STREET,

GLASGOW, C.2.

All Steel tested before leaving the Works

W71-0055

CODES USED

A.B.C. 5th & 6th Editions.

Bentley's Phrase, 1st.

2nd.

Lieber's 5 Letter.

Western Union.

5 Letter.

Engineering.

Marconi International.

Acme Selwyn's.

Universal Trade, Etc.

A6422

Boiler Steel Plates Branded



Ship Steel Sections Branded

COLVILLES



DALZELL STEEL

BRITISH-STEEL

3rd. October, 1939.

MB.

LONDON OFFICE:
6 Spring Gardens.
Cockspur Street, S.W.1.

SOLD TO Messrs. Cochran & Co., (Annan) Ltd., ANNAN.

PRIORITY
GRADE 6.

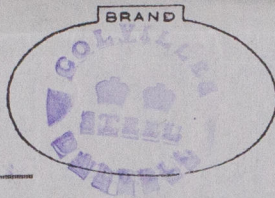
WAGON No: LMS.217939

Carriage:

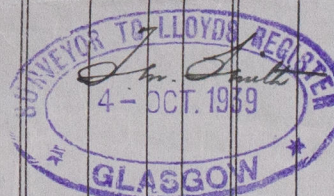
Tests: LLOYDS.

W.O. 1088

To: Newbie Siding, ANNAN.



DATE AND No. OF ORDER	MARKS	NO. OFF	DIMENSIONS	TONS CWT. Q. LBS.	TONS CWT. Q. LBS.	TONS CWT. Q. LBS.	TONS CWT. Q. LBS.	RATE	£	S.	D.
15.9.39. 8670 PB.9/267	14444		ACID STEEL BOILER PLATE.								
	8670/14444	1	4'8.1/4 Dia 19/32	3 3 19	8876 ✓	26/30 ✓	B239	3/69 ✓			



© 2020

Lloyd's Register
Foundation

D.L.

D.L.

14444

1068

1880/MAY 14

4.8.14 Dis 1880

3.3.14

VOID STRENGTH OF PLATE

For: Heppie & Co., Ltd.

Wagon No. 111-5122

SOLD TO Messrs. Gough & Co., (Glasgow) Ltd., Glasgow.

Bolton Steel Plate, Standard.

All steel tested before use by the Works.

GLASGOW, G.D.

102 WEST GEORGE STREET

COLVILLE LTD.

3rd Oct 1914

Product No. 1

COVULTE

BRITISH STEEL

BRITISH STEEL

COVULTE LTD.



© 2020

Lloyd's Register Foundation