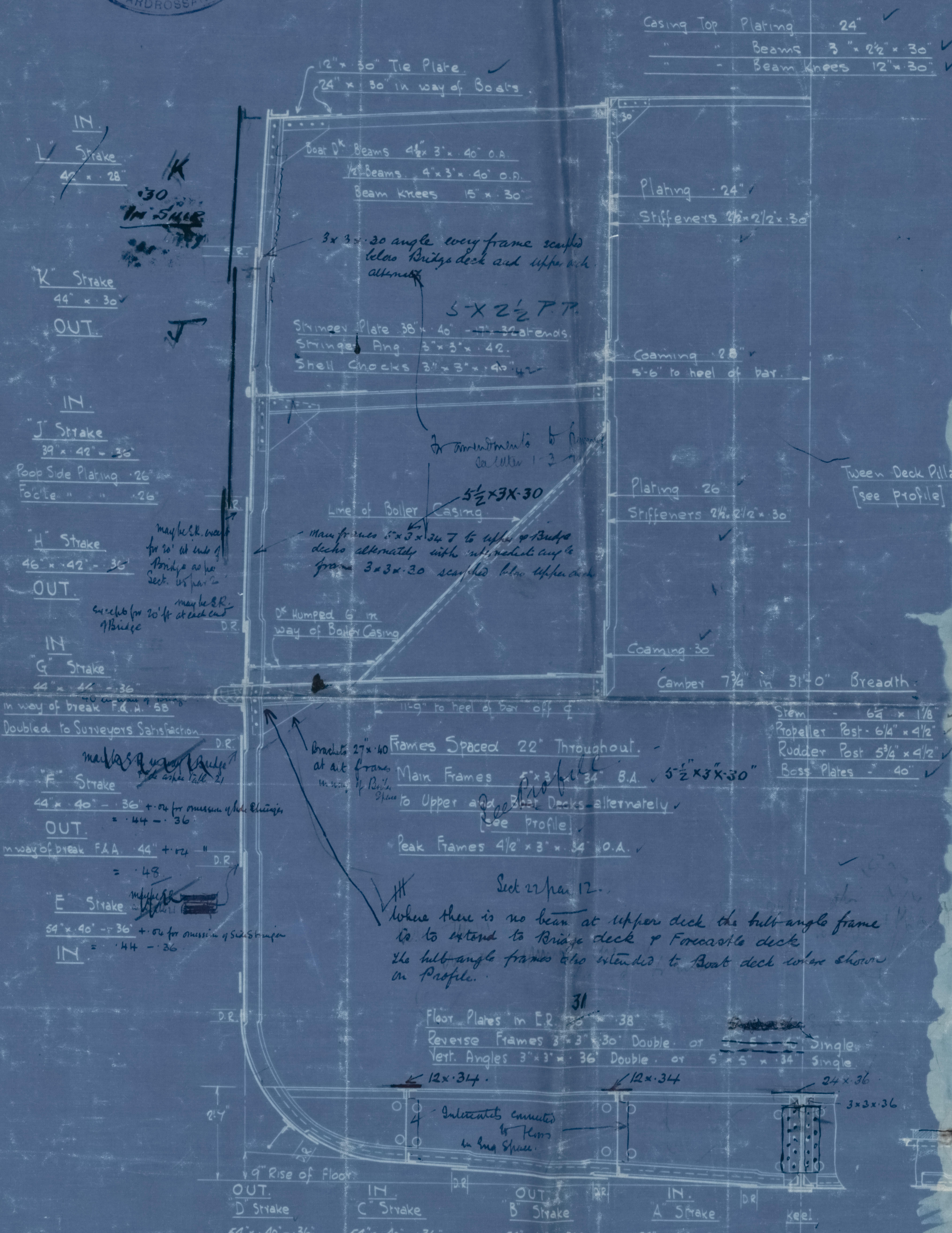


PLAN N° 1  
SHIP N° 333  
MIDSHIP SECTION  
SCALE: 1/2" = 1 FOOT

DIMENSIONS  
Length B.P. 185'-0"  
Breadth [Mid.] 31'-0"  
Depth Mid. to Upper D<sup>1</sup> 13'-6"  
" " " Bridge D<sup>1</sup> 2'-6"

LLOYD'S NUMERALS  
Transverse N° B + D = [31 + 13.5] = 44.5  
Longitudinal N° L (B + D) = [185 x 44.5] = 8232.5  
d in Holds = 12.17  
d in Boiler Space = 12.67  
Proportions 1/6 to Upper Deck = 13.7  
" 1/6 to Bridge Deck = 8.60

Equipment	Numerals
L (B + D)	185 x 44.5 = 8232.5
Peep Bridge & for	185 x 8 x 75 = 1110.0
Casings [L x H]	75 = 65 x 5 x 7 x 75 = 291.37
2 Bow Anchor	9633.87
1 Stream	19 9650.8
1 Kedge	19 9650.8
210 Fathoms	1/16 Stud Chain Cable
60 "	3/4 Steel wire (stream)
90 "	3/4 Wire (downline)
90 "	6 Hemp Haulers
90 "	5 Wreps

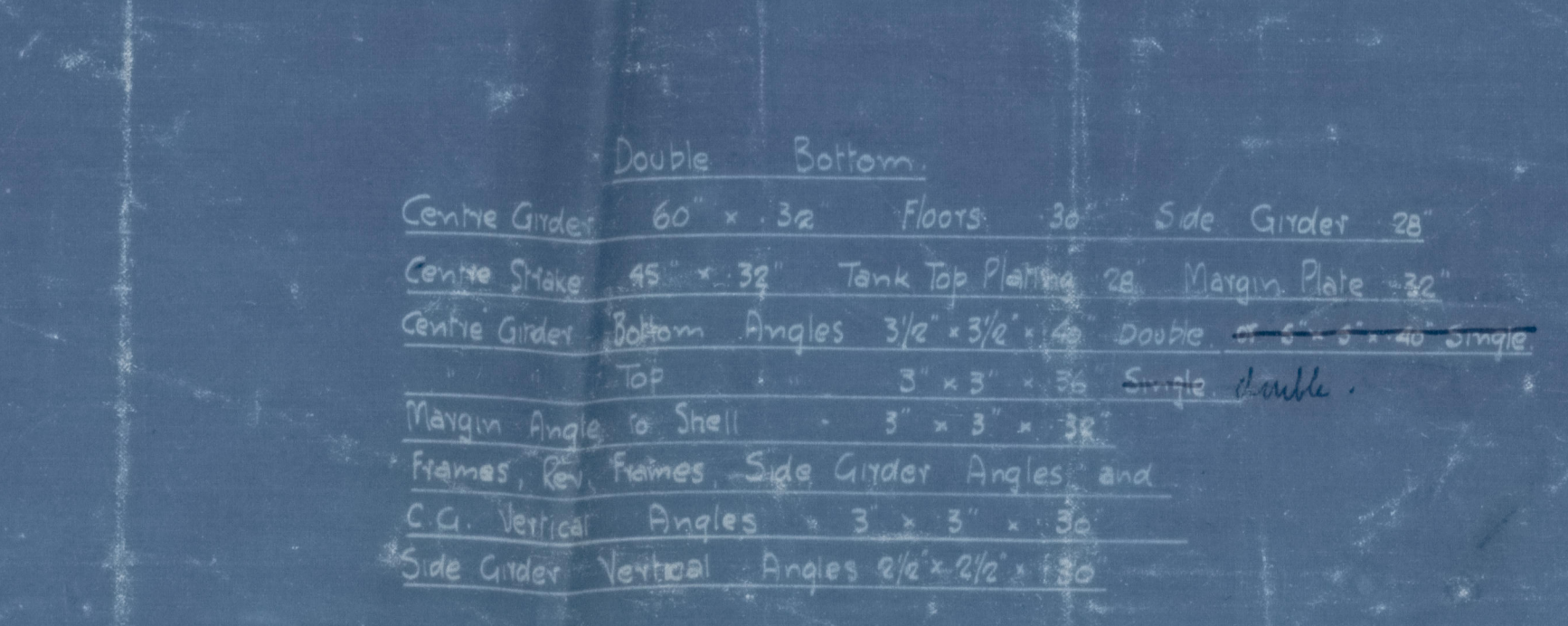


As Built

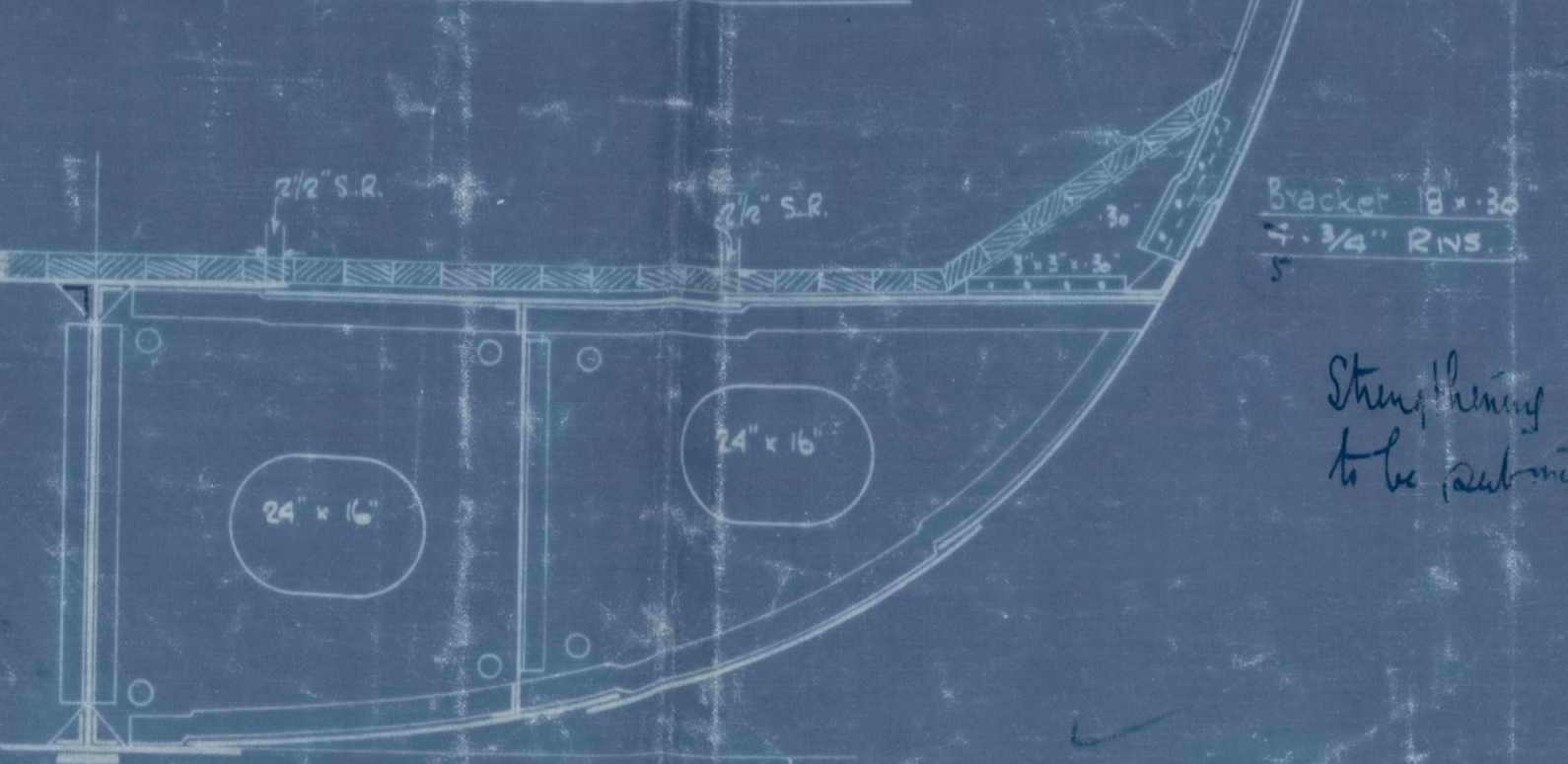


ROUTING NOTE  
Seams of Shell from Keel to Strike below ✓  
Sheerstrake ✓ D.R. 3/4 Rivers to S.R. 1/4 Rvs. at ends ✓  
Seams of Sheerstrake D.R. 3/4 Rivers Throughout ✓  
Butts of Shell from Keel to upper turn of bilge T.R. 1/4 Rvs ✓  
D.R. 3/4 Rivers at ends ✓  
Butts of Shell from upper turn of bilge to strike below ✓  
Sheerstrake T.R. 1/4 Rvs. 1/2 L - D.R. 1/4 Rvs. at ends ✓  
Butts of Sheerstrake and strike below T.R. 1/4 Rivers to ✓  
D.R. 3/4 Rivers at ends ✓  
Butts of Keel Plate T.R. 1/6 Rvs. or Q.R. 1/4 Rvs. for 1/2 L ✓  
to D.R. 3/4 Rivers at ends ✓  
Seams of Deck Plating 1/6 and 1/4 Rivers S.R. ✓  
Butts " " 1/6 " 1/4 " D.R. for 1/2 L to S.R. at ends ✓  
Rivets to Shell 3/4 Rivers Throughout. Spaced 7 diam. apart except ✓  
forward of 1/2 L in Bottom where spacing is 6 diam. apart ✓

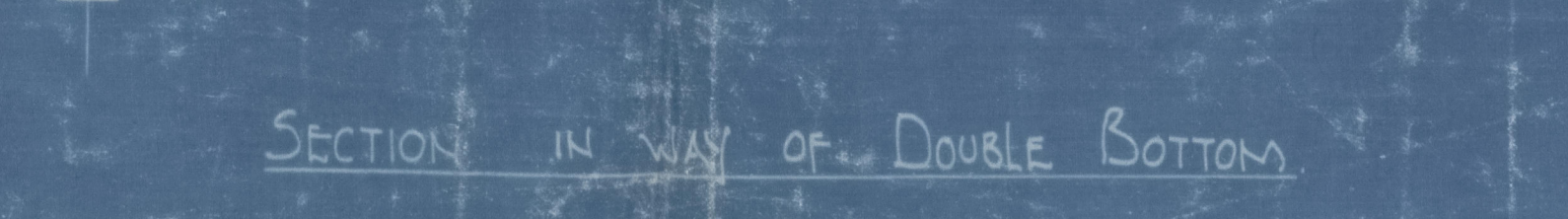
SECTION THRO' ENGINE ROOM  
WHERE NO DOUBLE BOTTOM IS FITTED.  
A, B, & C. Shakes to have midship thickness maintained to  
rule position of forward Collision Bulkhead.



SECTION THRO' HOLD



SECTION IN WAY OF DOUBLE BOTTOM



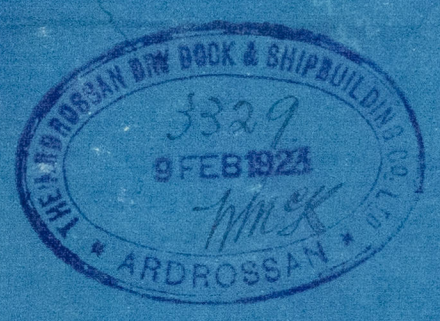
W709-0108 (1:2)

CROSSAN DRY DOCK  
& SHIPBUILDING CO. LTD.

Montgomery

14.2.23

W709-0108



PLAN No 1  
SHIP No 333  
MIDSHIP SECTION

SCALE: 1/2" = 1 FOOT

DIMENSIONS  
Length B.P. 185'-0"  
Breadth [Mid] 31'-0"  
Depth Mid to Upper D<sup>13</sup> 13'-6"  
" " Bridge D<sup>13</sup> 21'-6"

LLOYD'S NUMERALS

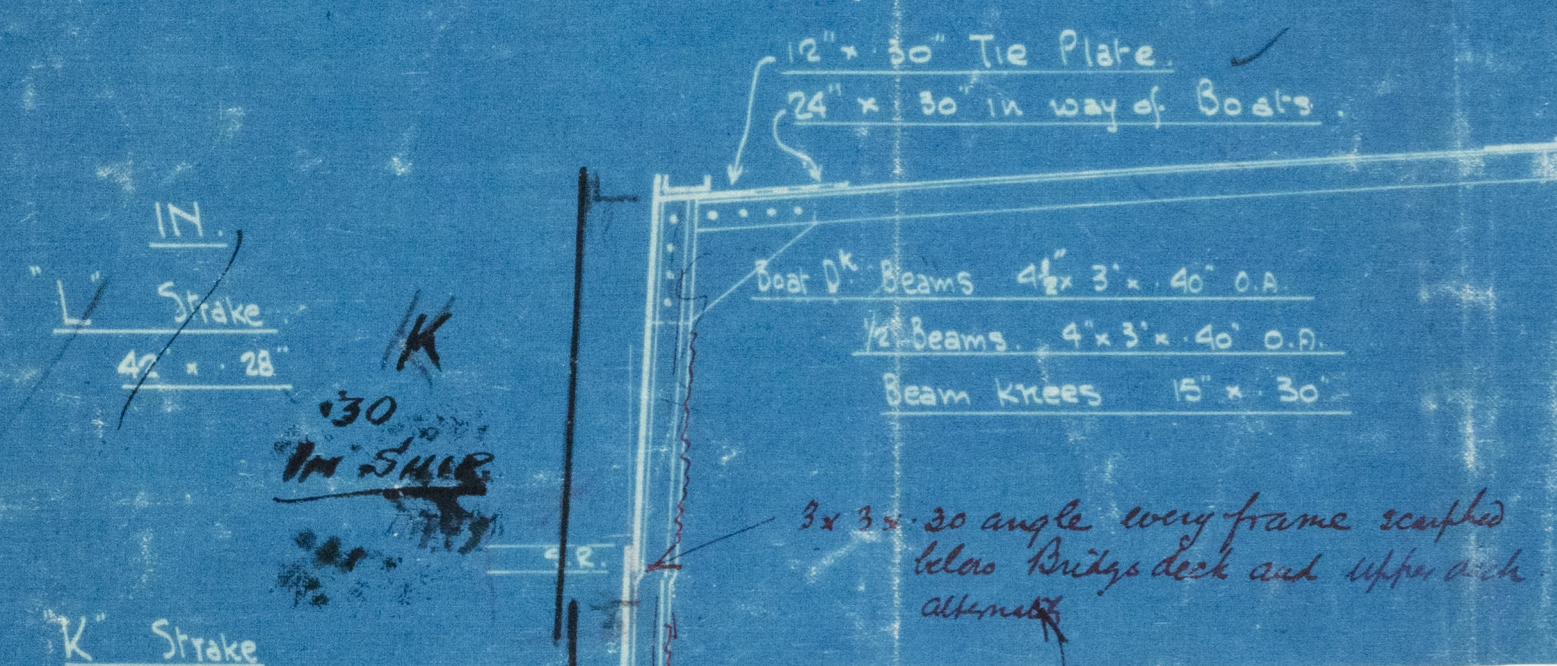
Transverse No B + D = [31 + 13.5] = 44.5  
Longitudinal No L(B + D) = [185 x 44.5] = 8232.5  
d in Holds = 12.17  
d in Boiler Space = 12.67  
Proportions 1/10 to Upper Deck = 13.7  
" 1/10 to Bridge Deck = 8.60

Casing Top	Plating	24"
"	Beams	3" x 4 1/2" x 30"
"	Beam knees	12" x 30"

Equipment	Numerical
L(B + D)	= 185 x 44.5 = 8232.5
Poop Bridge & Deck	= 185 x 8 x 7.5 = 1110.0
Casings	[L x H] x 7.5 = 55.5 x 7.5 x 7.5 = 241.37
Equipment	Letter
2 Bowst Anchors	Stallion
1 Stream	"
1 Kedg	"
210 Fathoms	3/16" Stud Chain Cable
40 "	3/4" Steel Wire Stream
90 "	3 " Wire Towing
90 "	6 " Hemp Hawseers
90 "	5 " Wire Wreps

RIVETING NOTE

Seams of Shell from Keel to Strake below  
Sheerstrake D.R. 3/4" Rivets to S.R. 1/4" Riv. at ends.  
Seams of Sheerstrake D.R. 3/4" Rivets Throughout.  
Butts of Shell from Keel to upper turn of bilge T.R. 3/4" Riv.  
D.R. 3/4" Rivets at ends.  
Butts of Shell from upper turn of bilge to strake below  
sheerstrake T.R. 3/4" Riv. to 1/2" - D.R. 3/4" Riv. at ends.  
Butts of Sheerstrake and strake below T.R. 3/4" Rivets to  
D.R. 3/4" Rivets at ends.  
Butts of Keel Plate T.R. 7/8" Riv. or Q.R. 3/4" Riv. for 1/2"  
to D.R. 3/4" Rivets at ends.  
Seams of Deck Plating 5/8" and 3/4" Rivets S.R.  
Butts " " 5/8" " 3/4" " D.R. for 1/2" to S.R. at ends.  
Frames to Shell 3/4" Rivets Throughout. Spaced 7' dia. apart except  
forward of 3/6L in Bottom where spacing is 5' dia. apart.



K Strake  
44" x 30"

OUT

IN

J Strake  
37" x 42" x 36"

Poop Side Plating 26"  
Focals " " 26"

H Strake  
46" x 42" x 36"

OUT

IN

G Strake  
44" x 46" x 36"

in way of break F.D. II  
Doubled to Survivors S

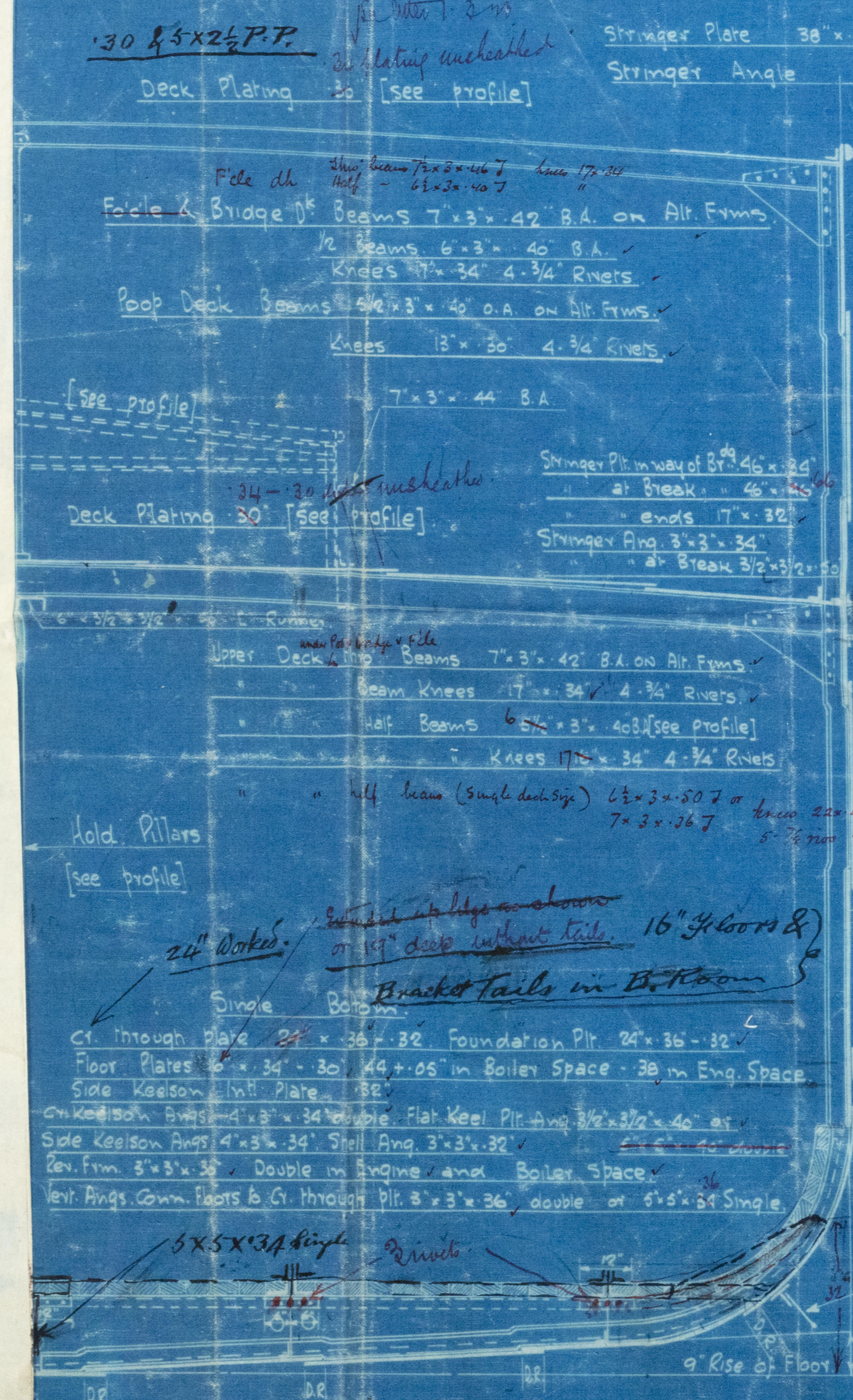
F Strake  
44" x 40" x 36"

OUT

most of break F.A. 4

E Strake  
54" x 40" x 36"

IN



SECTION THRO' ENGINE ROOM  
WHERE NO DOUBLE BOTTOM IS FITTED  
A, B, & C. Shakes to have midship thickness maintained to  
rule position of forward Collision Bulkhead.

Double Bottom.  
Centre Girder 60" x 32" Floors 30" Side Girder 28"  
Centre Strake 45" x 32" Tank Top Plating 28" Margin Plate 32"  
Centre Girder Bottom Angles 3 1/2" x 3 1/2" x 1/4" Double at 5" x 3" x 36" Single double  
TOP 5" x 3" x 36"  
Margin Angle to Shell 5" x 3" x 36"  
Frames, Rev. Frames Side Girder Angles and  
C.G. Vertical Angles 3" x 3" x 36"  
Side Girder Vertical Angles 3 1/2" x 3 1/2" x 36"

SECTION THRO' HOLD



SECTION IN WAY OF DOUBLE BOTTOM

ARROSSAN DRY DOCK  
& SHIPBUILDING CO. LTD.

14.2.23



RETAIN

Anderson

W709-0108  
(2004)

Wp. 333

Mid Section

"Lesmore"

GLASGOW REPORT No 43774

RETAIN

W709-0108



© 2021

Lloyd's Register  
Foundation