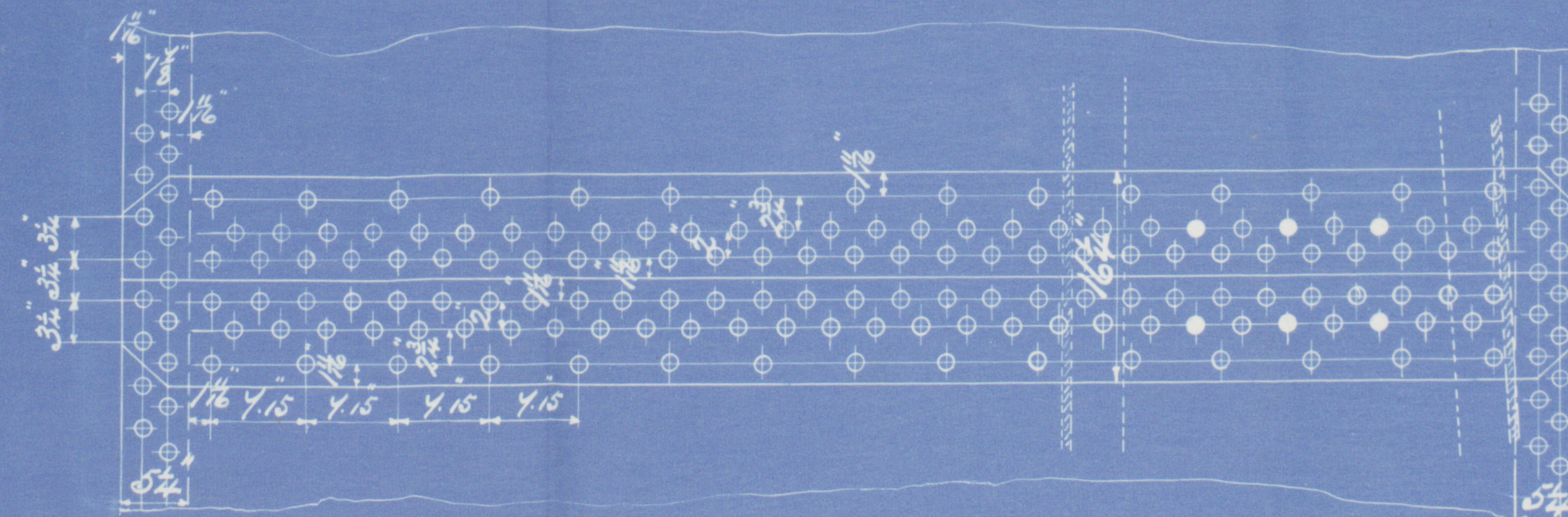
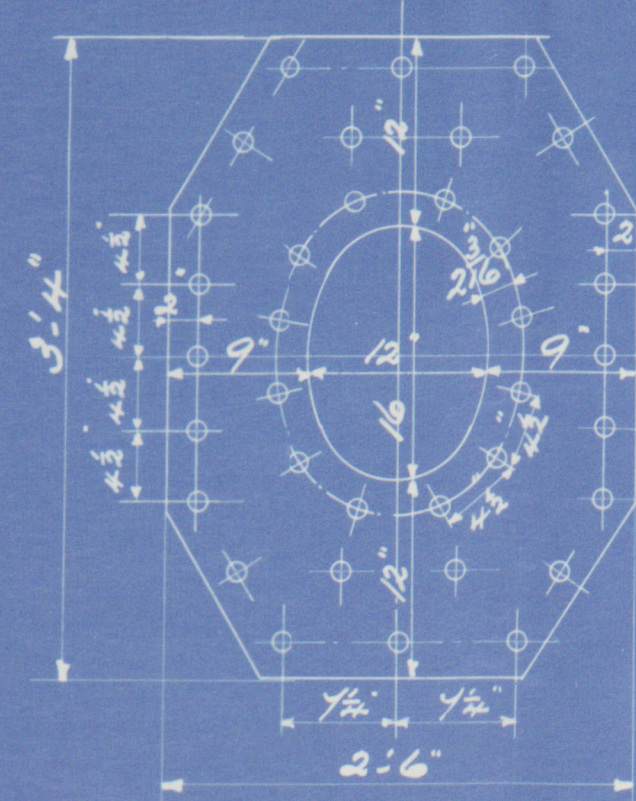


DIA<sup>3</sup> OF BOILER. 11'-6" outside  
 LENGTH OF D<sup>9</sup>. 10'-1 1/8" over plates  
 NUMBER OF TUBES. 138  
 LENGTH OF D<sup>9</sup>. 6'-4 1/2" between plates  
 DIA<sup>3</sup> OF D<sup>9</sup>. 3 1/2" AREA THRU TUBES. 7.14 sq ft.  
 HEATING SURFACE IN TUBES. 806 sq ft  
 TOTAL HEATING SURFACE. 1041 sq ft  
 FIRE BAR SURFACE. 5 ft bars 33 sq ft  
 DIA<sup>3</sup> OF SAF VALVES.  
 CUBIC FEET OF STEAM SPACE. 6' above C.O. top 194 cu ft.  
 WORKING PRESSURE LLOYDS. 180 lbs.

9:11:05

Doubling plate 3/4" thick  
 Rivets 1/2" Holes 1/8"  
 Fitter outside shell with center axis longitudinal.

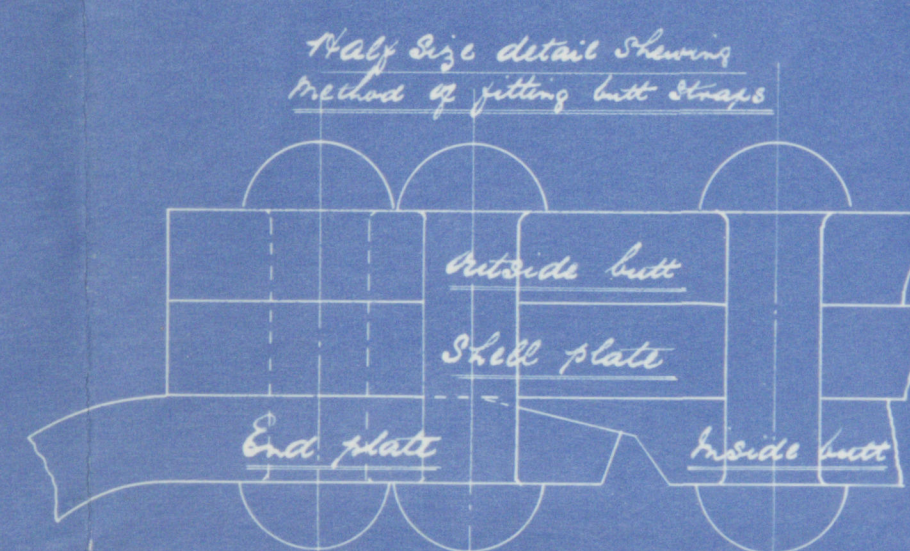
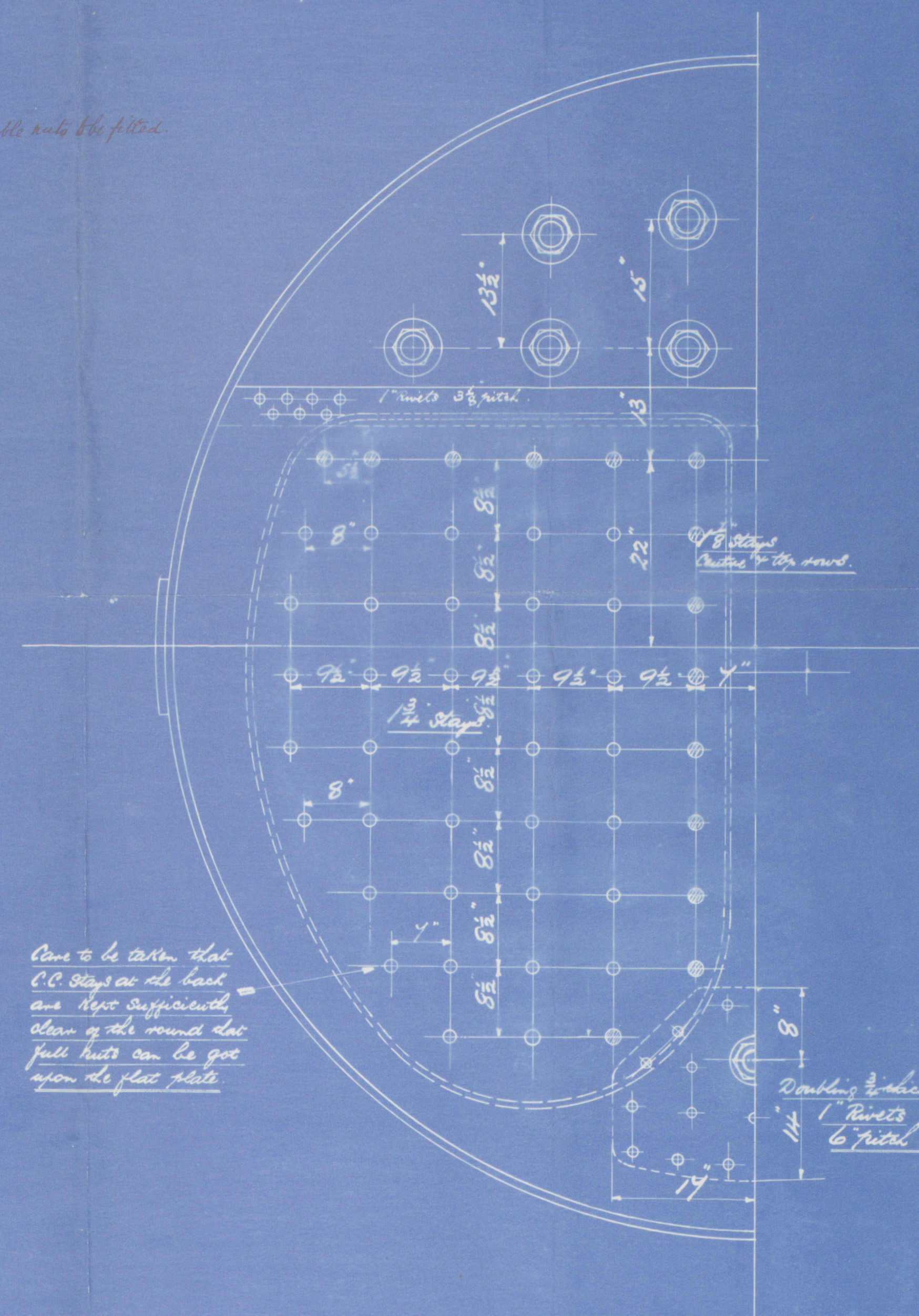
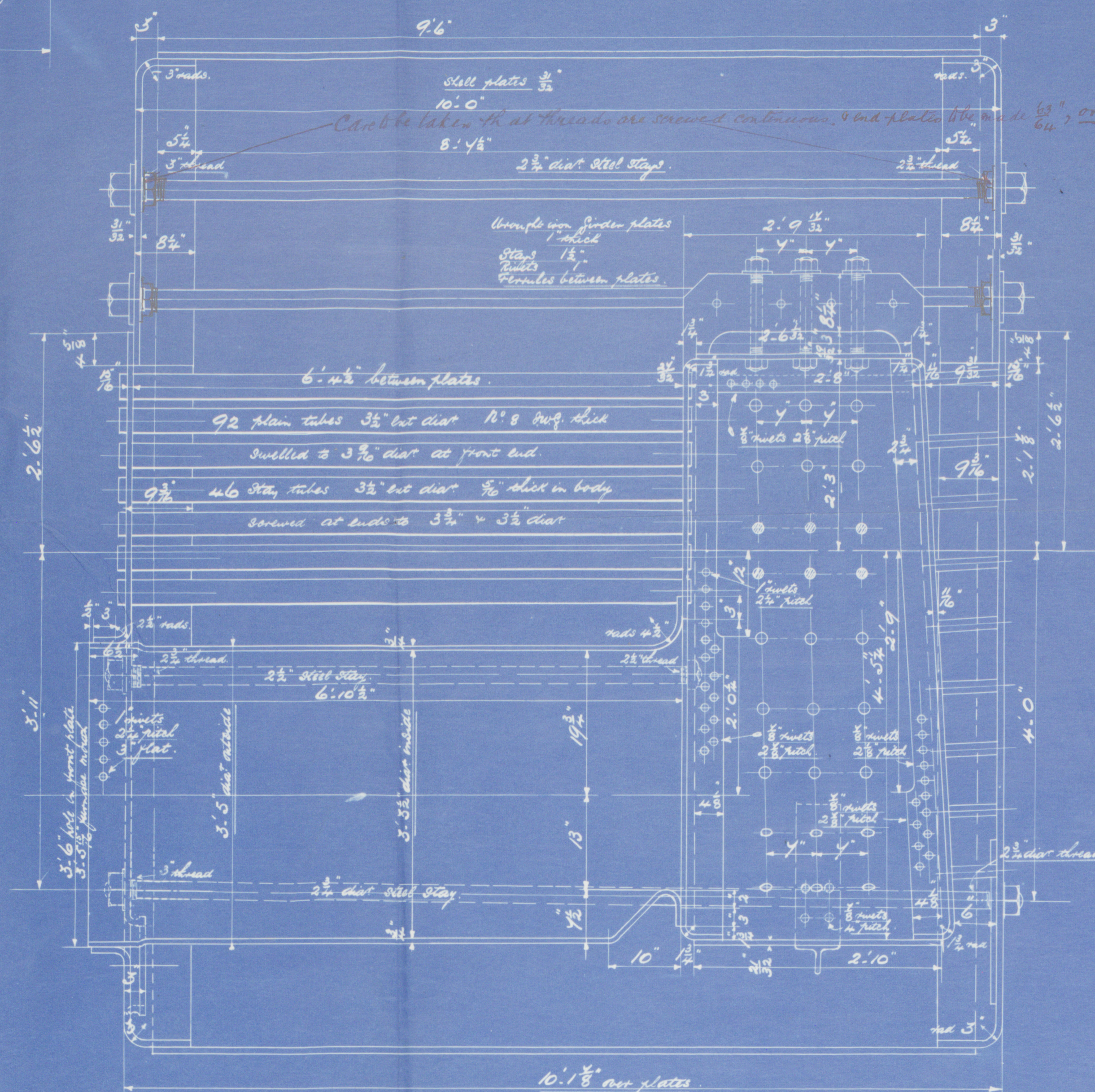
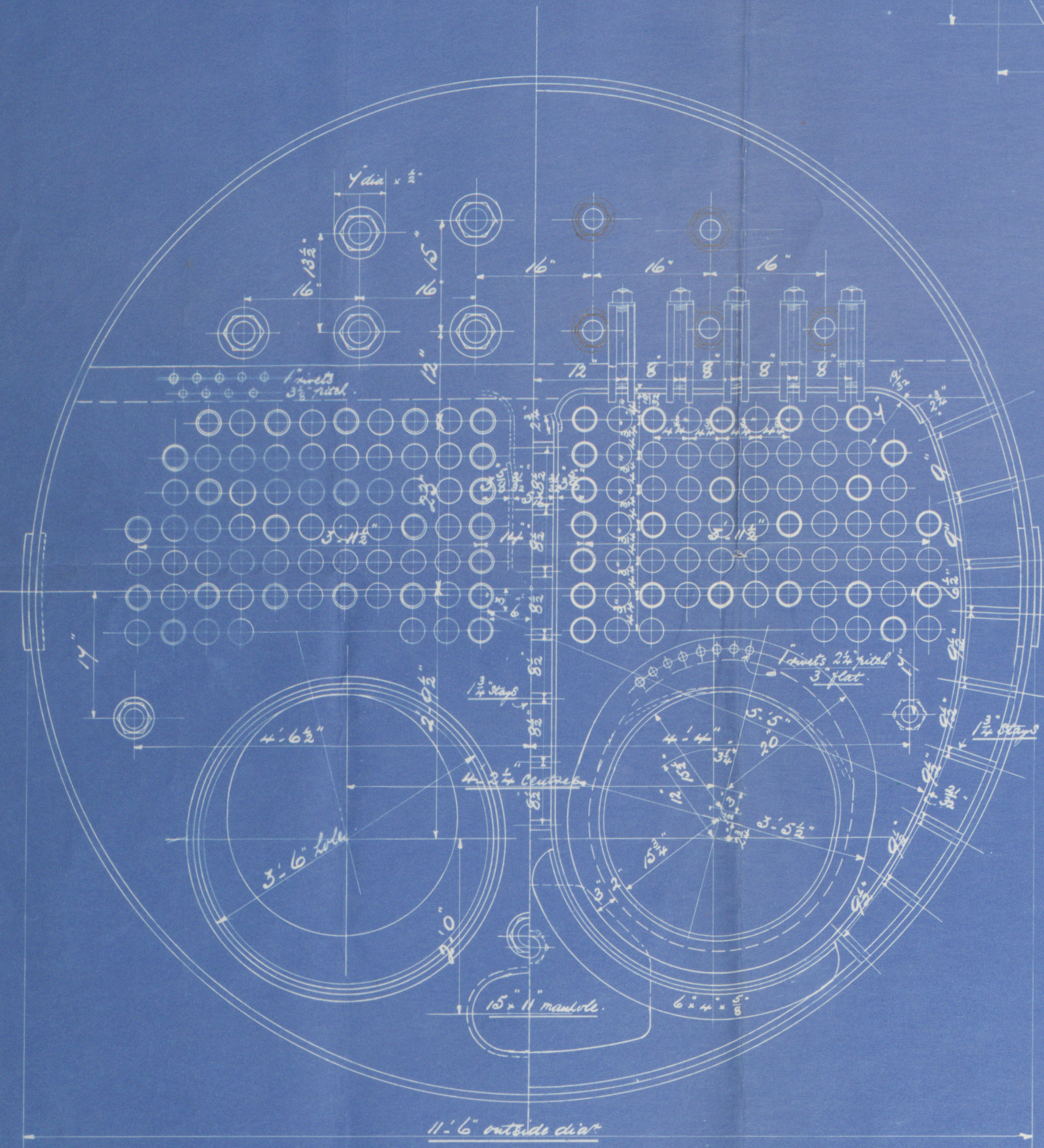


Circumferential Stems 3/4" Holes  
 % plate 65"  
 % rivet 5/16"  
 Longitudinal Stems 1/2" Holes  
 % plate 84-2  
 % rivet 107"  
 Double butt Stems 3/4" Holes  
 All rivets on shell 1/2" dia. Holes 1/8" dia.  
 Minimum tensile strength of shell plates 28 tons per sq in.

Note: The plates rivets & stays of steel by the Siemens Martin Process  
 All rivet holes drilled throughout the boiler close in shell after  
 the plates are bent  
 All flanged plates to be annealed after the plates are bent  
 Stays are not to be welded. Tubes are of iron.  
 The tensile strength of the shell plates to be between 28 & 30 tons  
 per sq inch.  
 The combustion chamber stays are screwed into both plates and  
 fitted with a nut at each end. Washers on outside of shell only,  
 none inside C.O.

Particulars of Stayings.

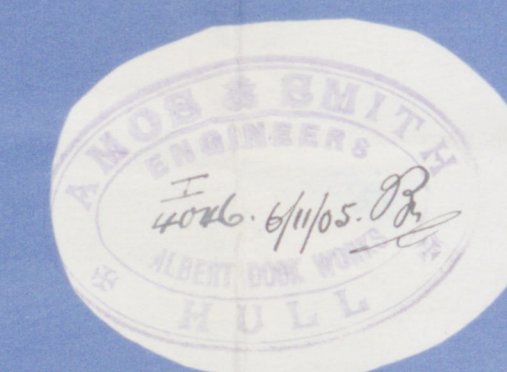
Stays	Dia <sup>3</sup>	N <sup>o</sup> of stays per unit	Area at top of stays
Steam Space stays	2 3/4"	6	5.055 sq in.
Tube plate	2 3/4"	6	4.108 "
Bottom stay	2 3/4"	6	5.055 "
C.O. stays	1 1/2"	10	1.43 "
"	1 1/2"	10	2.056 "
"	1 1/2"	10	2.897 "
Stay tubes	3 1/2"	9	2.364 "



ANOS & SMITH  
 ENGINEERS  
 ALBERT DOCK WORKS  
 HULL.

STEEL BOILER. N<sup>o</sup> 988.

SCALE 1/4" INCH TO ONE FOOT.



988.  
 8/11/05.  
 R.D.  
 8.11.05.

TITLE. Steel Boiler  
 FOR WHOM. Messrs. Butt & Hill  
 DATE. 8/11/05  
 ORDER. N<sup>o</sup> 988  
 IF MADE.  
 SCALE.

R. Rogers's Register  
 Foundation

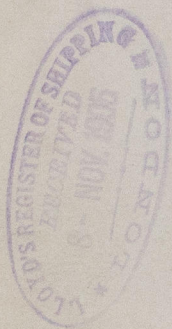
10130.



Messrs Amos Smith.

Nº 988.

Nº 1466  
Lloyds Test  
360 lbs.  
J. K.  
5.4.1906



s/s "Regal"

Hull Report No. 18117



© 2021

Lloyd's Register  
Foundation

W708 - 0155



© 2021

From AMOS & SMITH, HULL

Enclosure for

Lloyd's Register

Hull

Foundation

I  
4046

W708 - ©155½