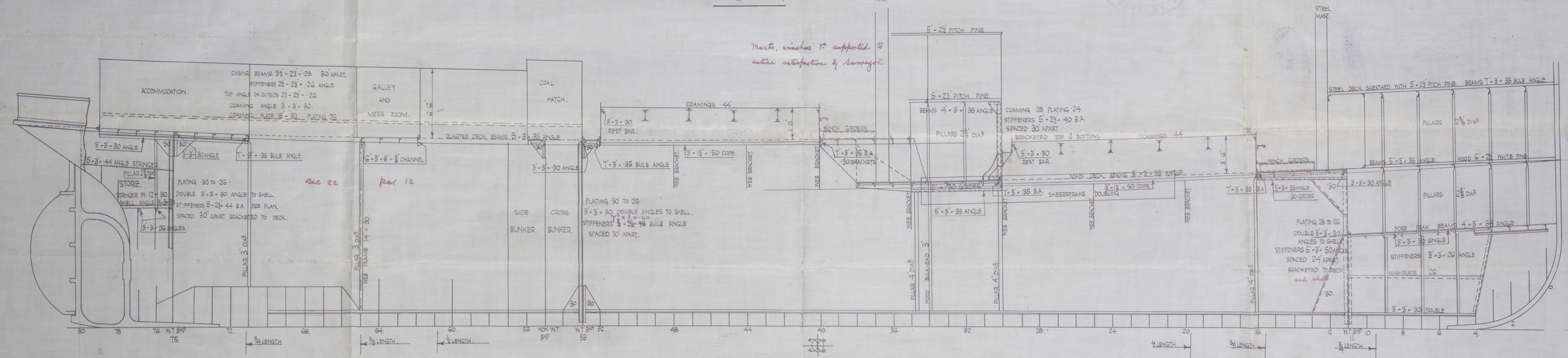


S.S. C.I. TYPE. YARD NOS 262-263.

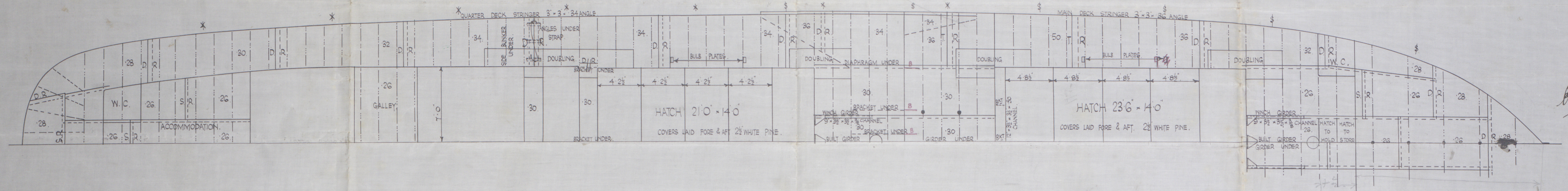
142' - 25' - 12' MOULDED TO MAIN DECK.

SCALE 1/4" = ONE FOOT.

Masts, winches & supported to entire satisfaction of Surveyors.

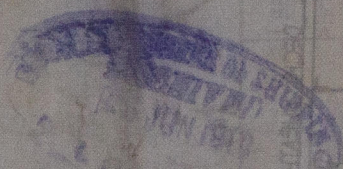


SEE SEPARATE PLAN OF STRENGTHENING FORWARD.



11/18

11/18

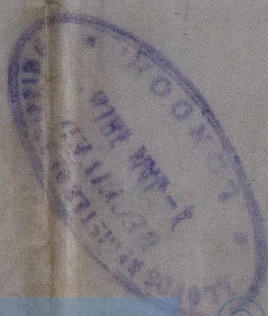


Moyallan

Moyallan

Profile Deck

W 50 Bottom



© 2020

Lloyd's Register
Foundation

W706-0030