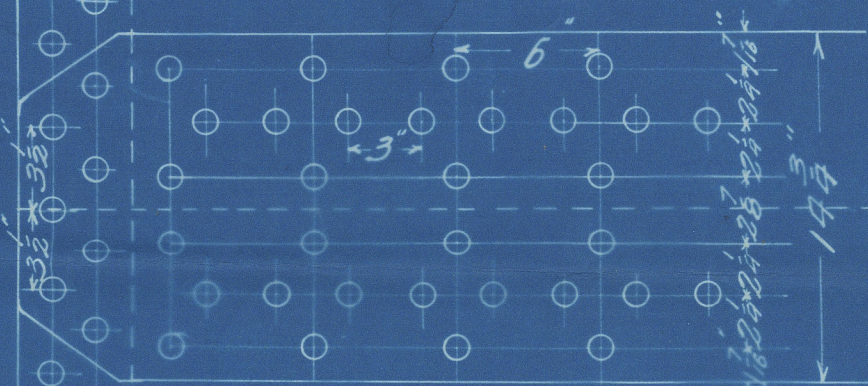


4: 10:05

CIRCUM SEAMS DOUBLE RIVETED
15" HOLES 3 1/2" PITCH 2 1/2" DIA. 5" PITCH

STEEL PLATES BARS & RIVETS

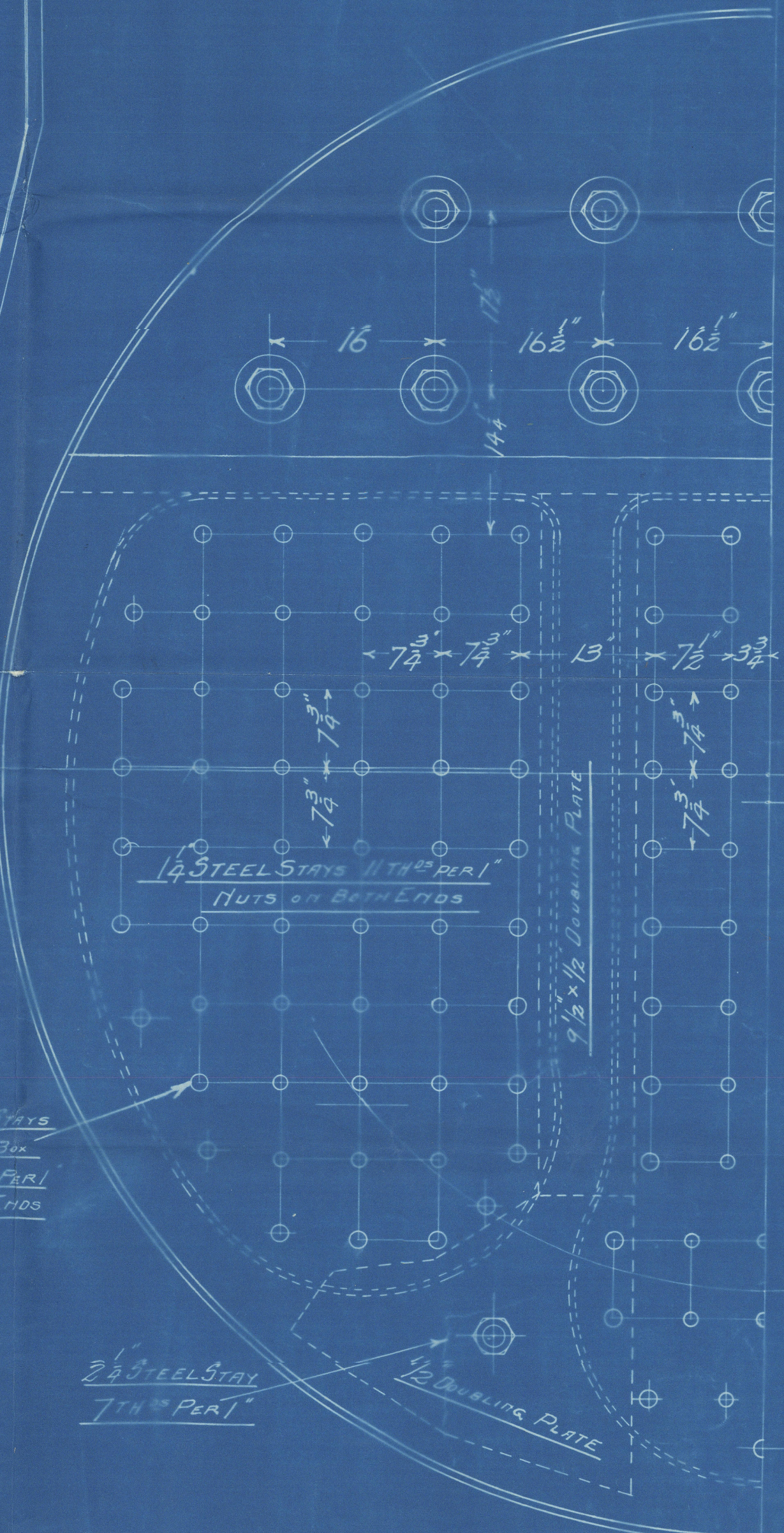
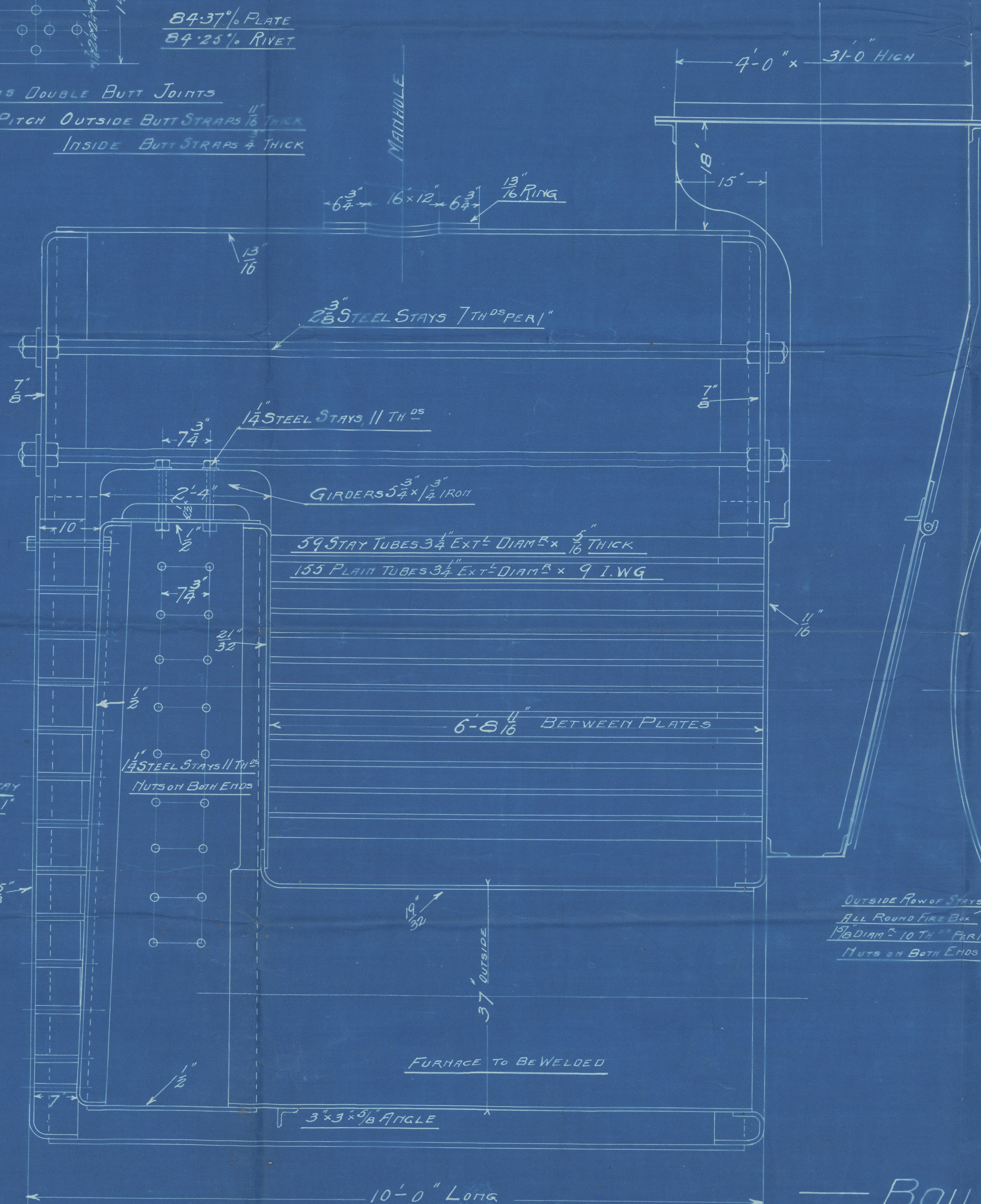
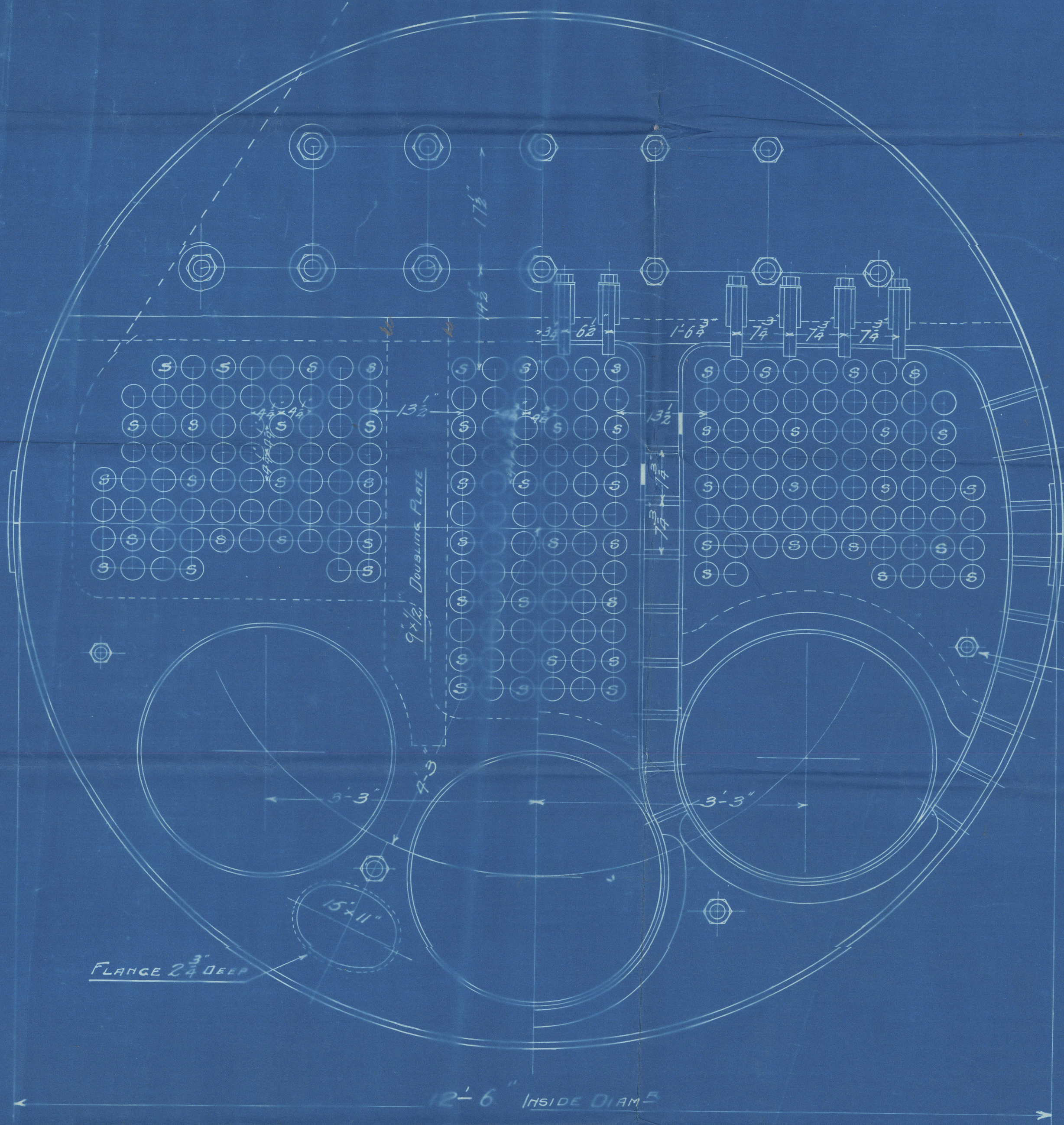
ALL HOLES DRILLED IN PLACE



84.37% PLATE
84.25% RIVET

LONG SEAMS DOUBLE BUTT JOINTS

15 HOLES 6" PITCH OUTSIDE BUTT STRAPS 1/2" THICK
INSIDE BUTT STRAPS 1/4" THICK



OUTSIDE ROW OF STAYS
ALL ROUND FIRE BOX
1/2" DIA. 10 TH PER 1"
NUTS ON BOTH ENDS

2 1/2" STEEL STAY
7 TH PER 1"

BOILER N° 963 1067

WORKING PRESSURE 125 LBS PER INCH

SCALE 1 INCH = 1 FOOT

GRATE SURFACE = 47 #
TUBE HEATING SURFACE = 1245 #
OTHER " = 254 #
TOTAL " = 1499 #
T.H.S. = 31.9

TO HAVE LLOYD'S CERTIFICATE

J.S.M.
3/10/05



Ross & Duncan

1064

Inf No 674 $\frac{19 \times 38}{27} \times 125 \text{ lbs.}$

Duplicate No 963

SS No 193

Williamson & Sons

Workington



N^o 7786

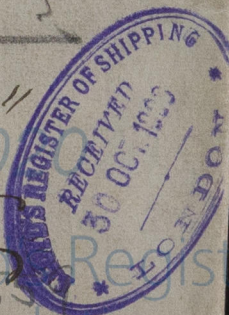
250 lbs

20-4-06

J. S. C.

S. S.
Galava

Cps. No. 245



W703-0169