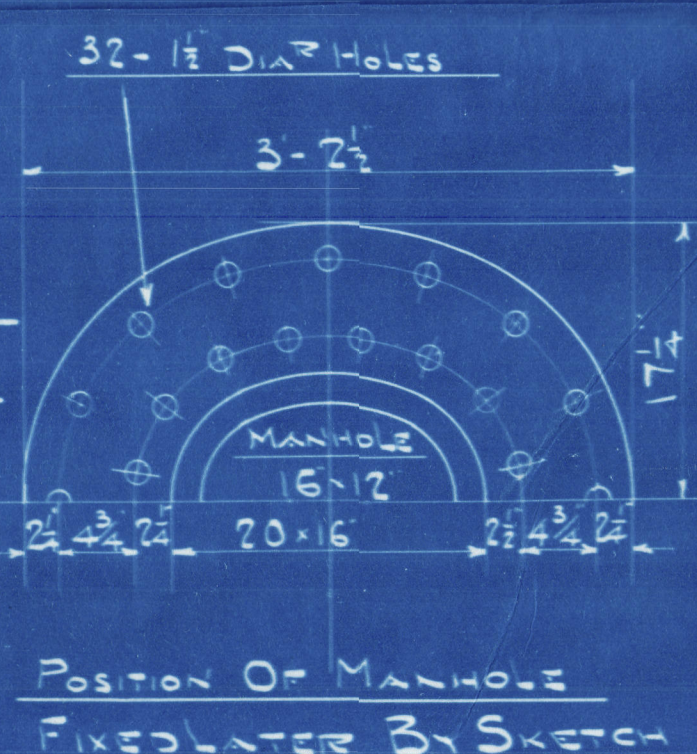
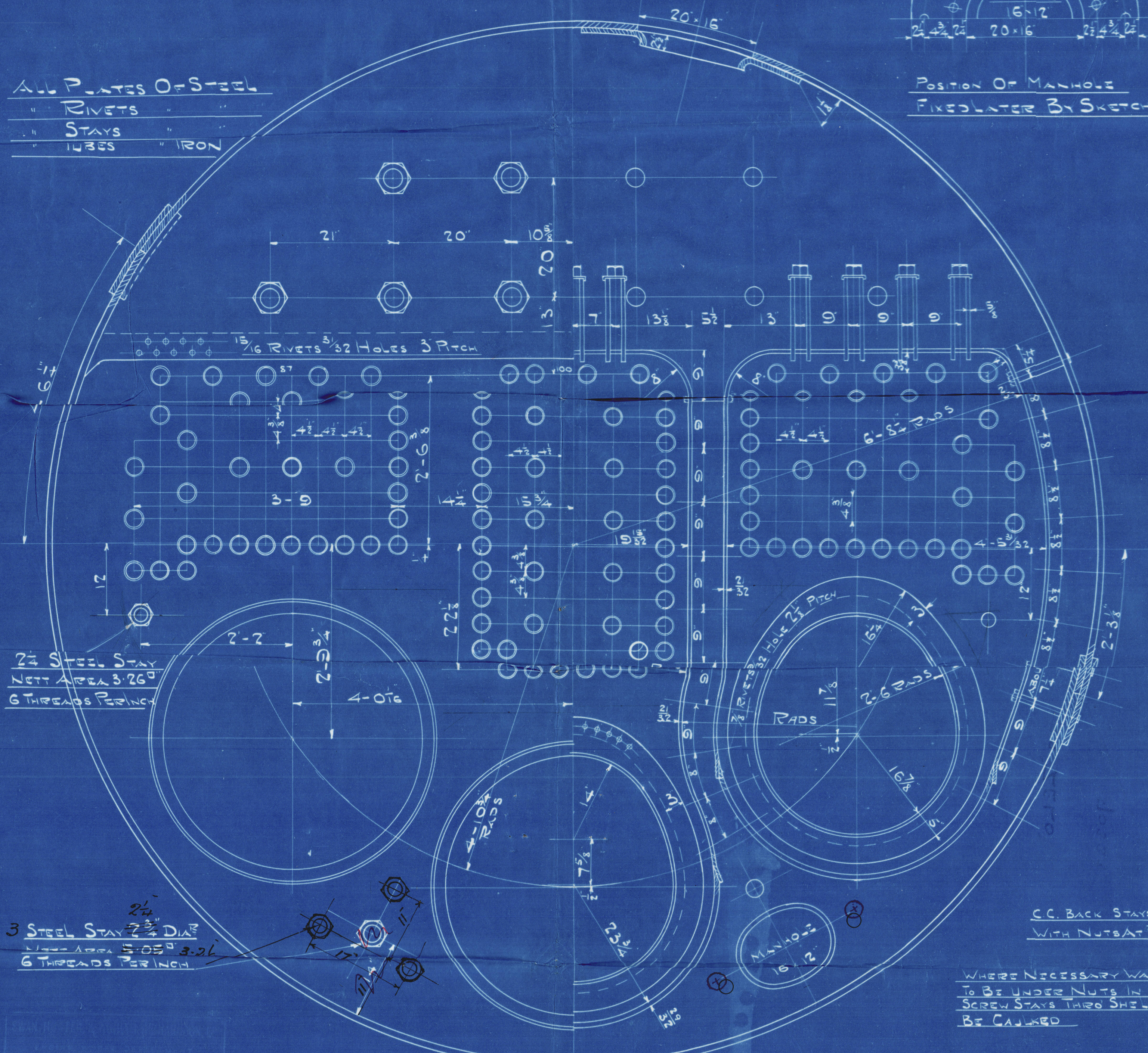


TENSILE STRENGTH OF MATERIAL

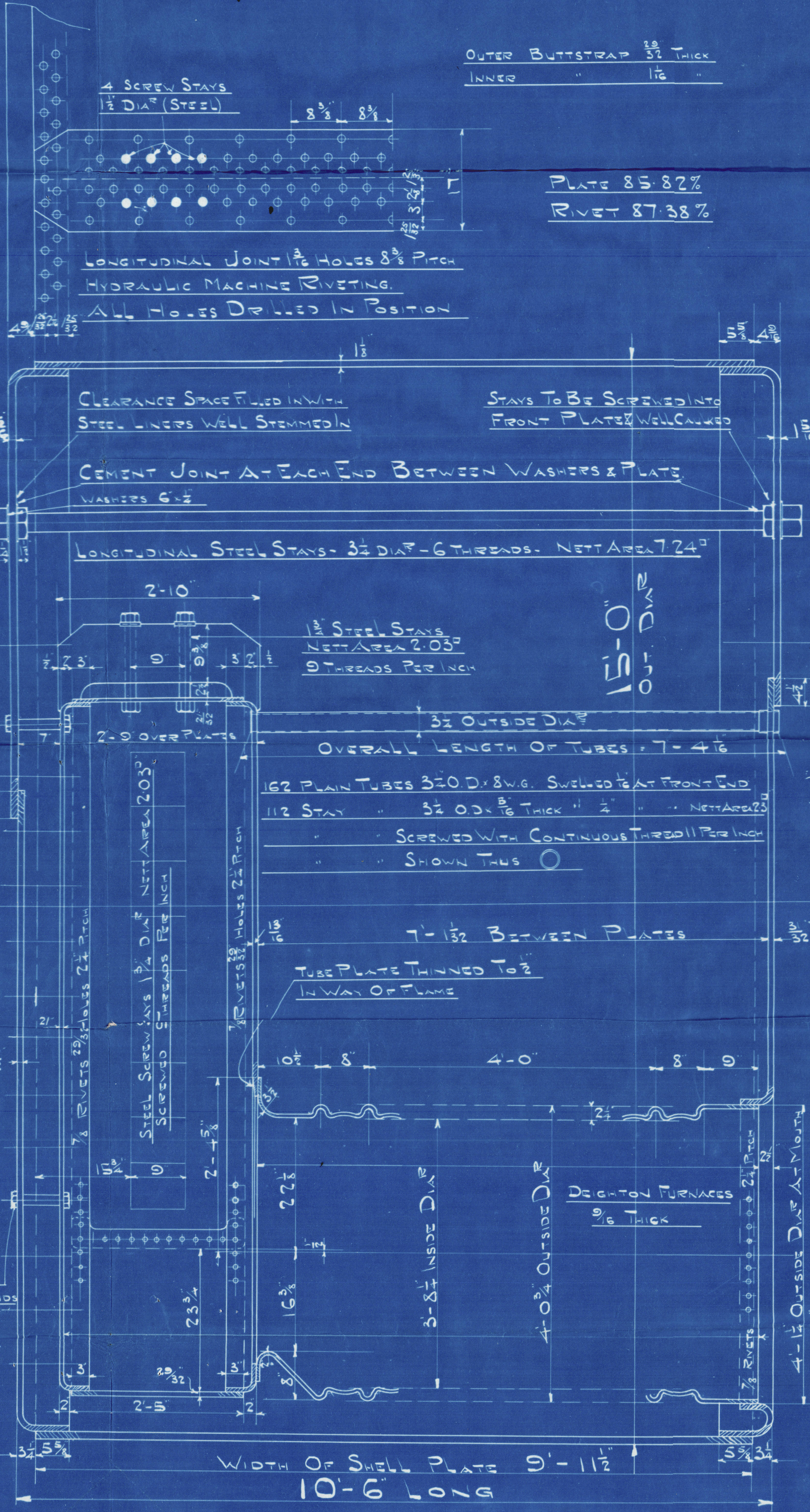
CIRC. SHELL PLATES & BUTTSTRAPS	= 29 ³ / ₄ TO 33 TONS	1057.29 ³ / ₄ to 34 tons
GIRDER PLATES	= 28 TO 32	
MANHOLE DOUBLINGS	= 27 TO 30	
ALL OTHER PLATES & FURNACES	= 26 TO 30	
LONGITUDINAL STEEL STAYS	= 25 TO 27	
SCREW STAY BARS (STEEL)	= 26 TO 30	
STEEL RIVET BARS	= 26 TO 30	

WORKING PRESSURE = 180 LBS PER SQUARE INCH
TEST " = 360 " " " " " " "

ALL PLATES OF STEEL
" RIVETS " "
" STAYS " "
" LUBES " IRON

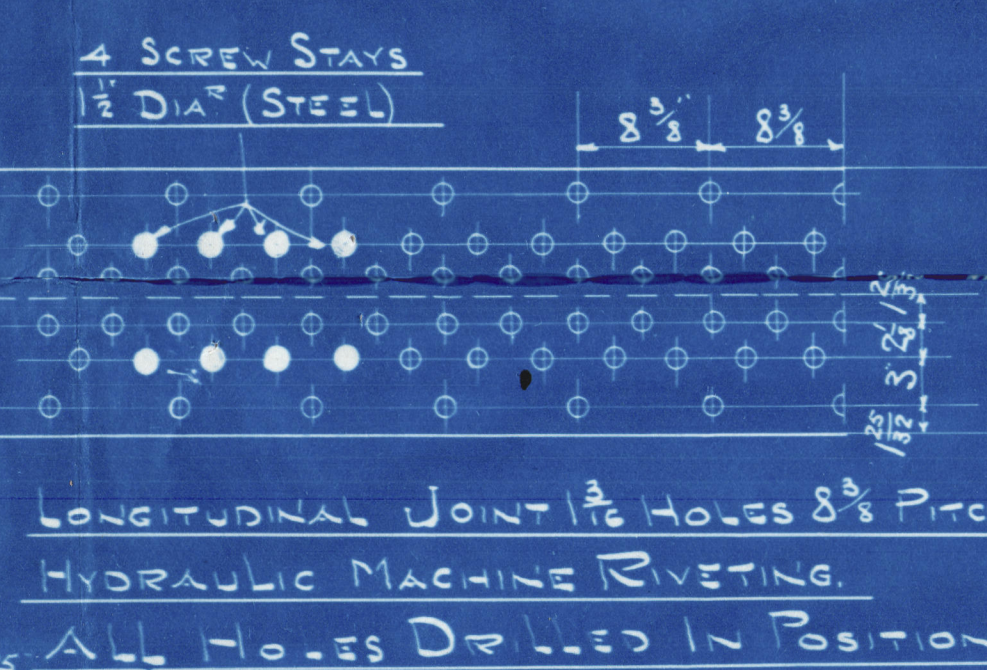


CIRC. JOINT 1 1/2 HOLES 3 1/2 PITCH



OUTER BUTTSTRAP 3/8 THICK
INNER " 1/2 "

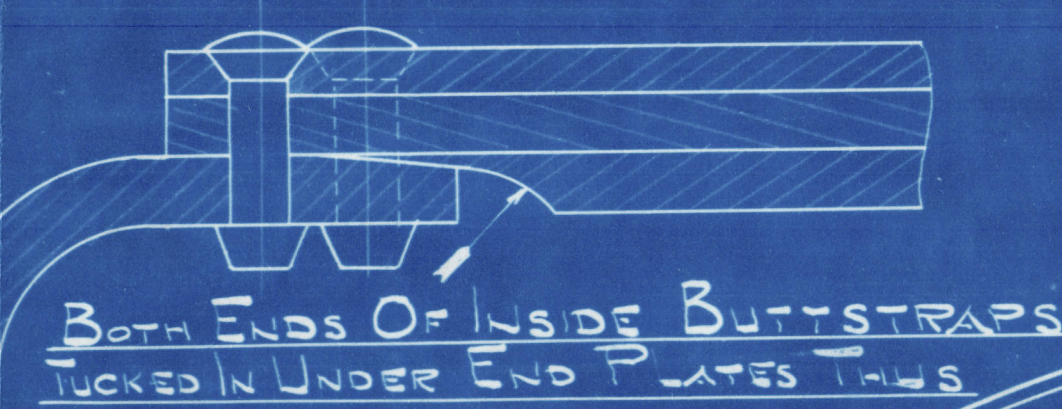
PLATE 85.82%
RIVET 87.38%



TOTAL HEATING SURFACE (2 BOILERS) = 4124 SO. FT.
" GRATE " (2 ") = 130 SO. FT.
FIREBARS 5'-9" LONG - IN TWO LENGTHS

TO LLOYDS SURVEY

3-10-16



BOTH ENDS OF INSIDE BUTTSTRAPS
TUCKED IN UNDER END PLATES THUS



3-10-16
APR

2 OFF (FOR EACH N°)

MAIN BOILERS NOS 1039 & 1041

SCALE = 1" = 1 FOOT

Muller Steel Works & Berlin

Nos 1039 & 1041

1051

by

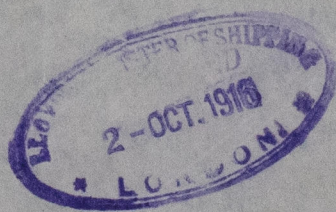
Swan Hunter & Wigham Richardson & Co.

for their Nos 1039 & 1041 Vessels

also No 1051

180 lbs working pressure.

Please return for reference
in dealing with 1041 Berlin



SS "ZELO"

NEWCASTLE ON TYNE.

Report No. 70333

SS. "HOPELYN"

NEWCASTLE ON TYNE.

Report No. 70599.



Lloyd's Register
Foundation

W702-0222