

Officer

3/11-26 P.L.

Draw. 97425

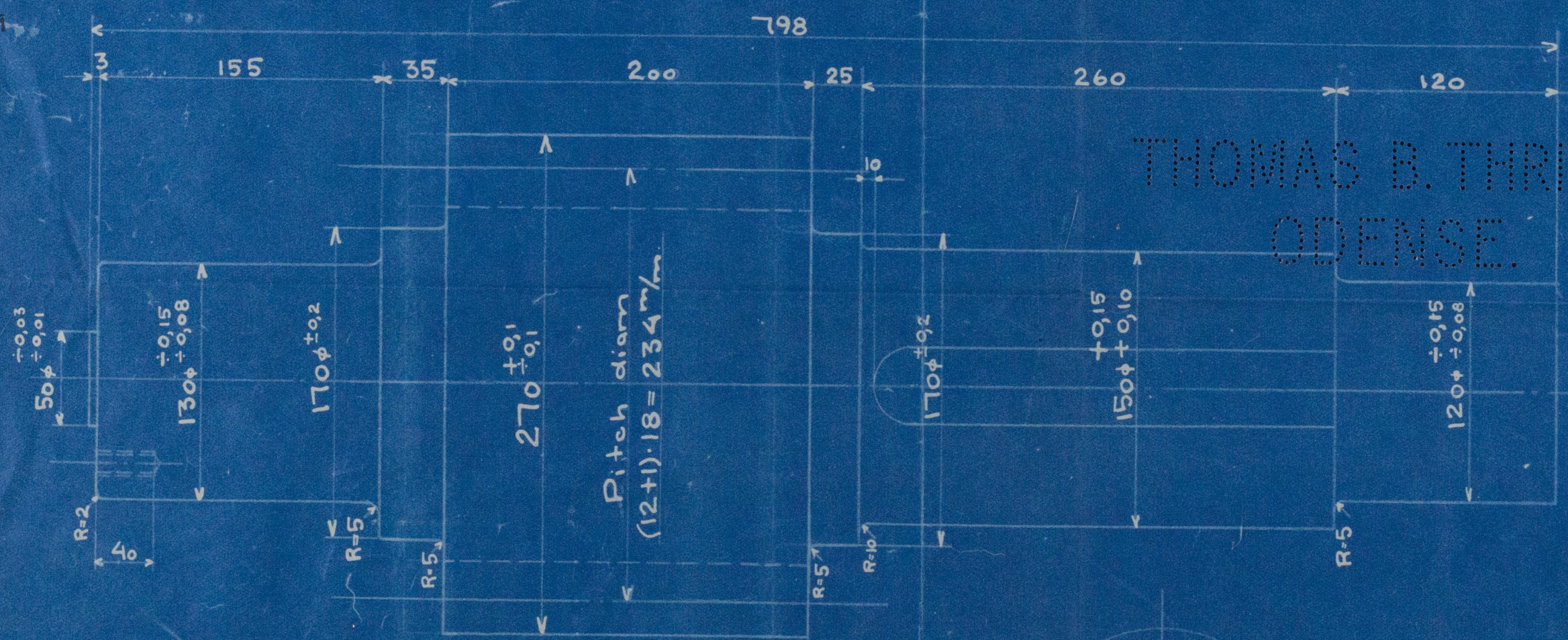
Pinion with shaft

1:2,5

Forged Steel

Forged steel 60-70 kg. pr. sq. mm. tensile strength
by min. 40 per ct. elongation.
5/16-27. No. 1

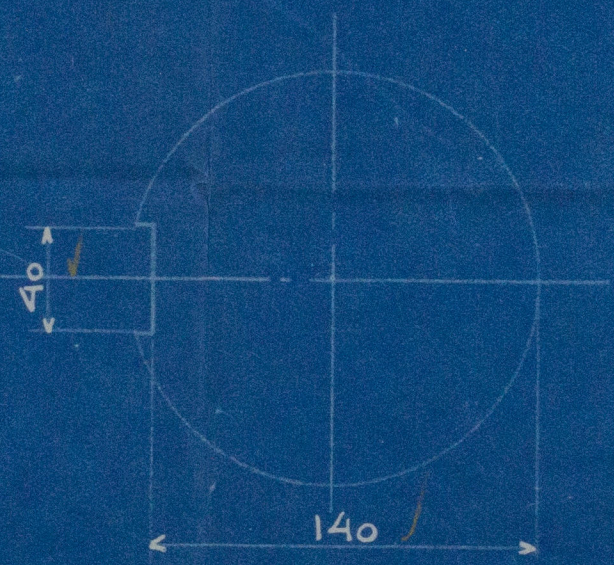
The pinion and quadrant must mesh especially well without play.



THOMAS B. THRIGE
ODENSE.



Cut teeth.
No. of teeth: 12.
Pitch: 18 π.



To be drilled by erection.

THIS DRAWING IS STRICTLY CONFIDENTIAL
AND MUST ON NO ACCOUNT BE COPIED OR
DISCLOSED FOR ANY THIRD PERSON.

ODENSE, DATE: 6/12/22
THOMAS B. THRIGE

LR

W-1-0104

Timon with shaft

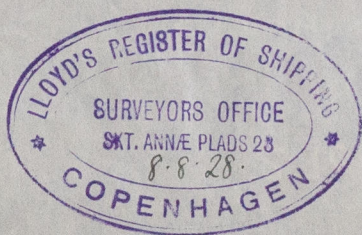
for the steering gear

for

Vessel Yard No. 37

being built by

a/s. Aalborg Maskin-og
Skibsbyggeri
Aalborg.



Borgny "

~~I 24~~

Cpn Repl No. 7931.

© 2021

Lloyd's Register
Foundation

W7-0104