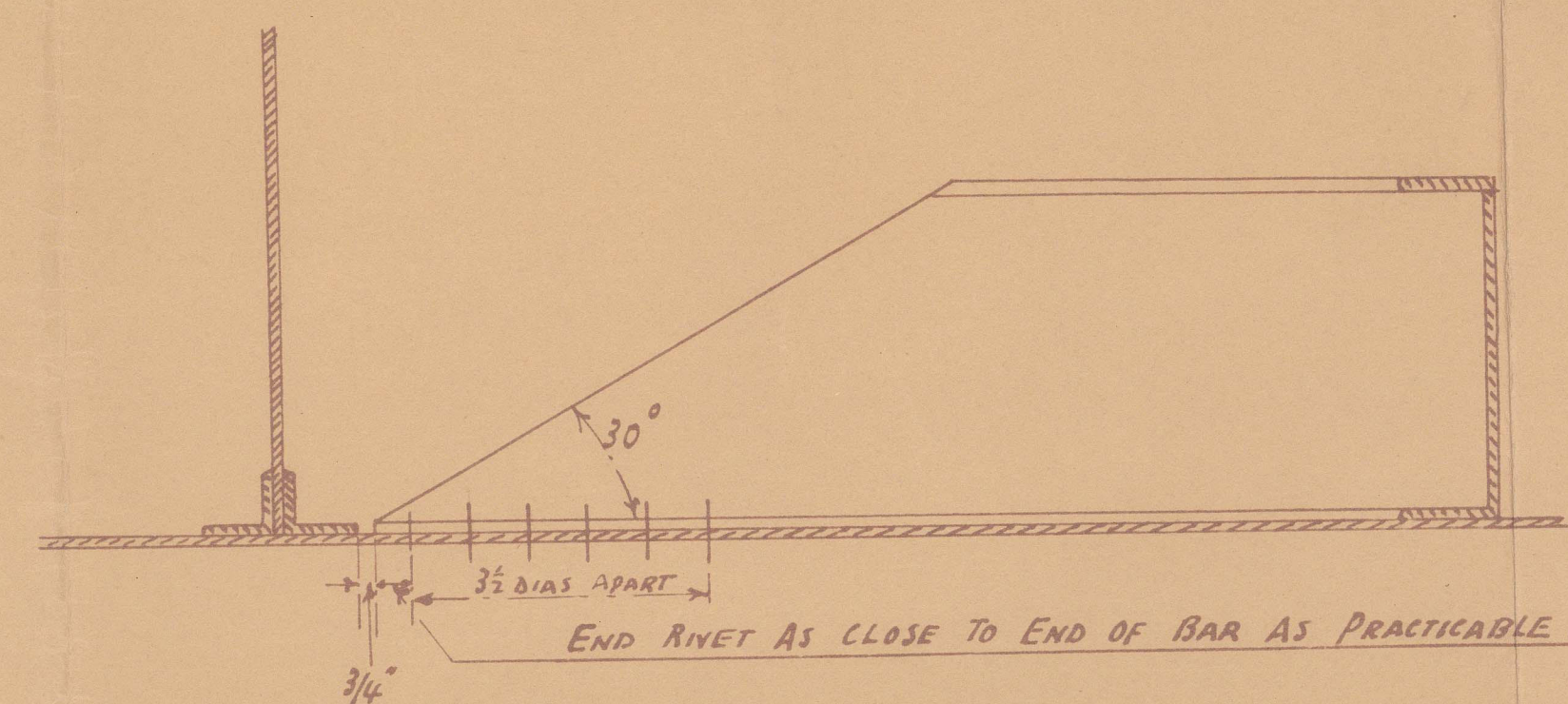


SKETCH SHewing SNIDE OF LONGITUDINALS
AND BULKHEAD STIFFENERS.



MIDSHIP SECTION & O.T. TRANSVERSE BULKHEAD.

DIMENS: LENGTH 80.305'-0" x 50'-0" MID x 19'-0" MID TO UPPER DECK.

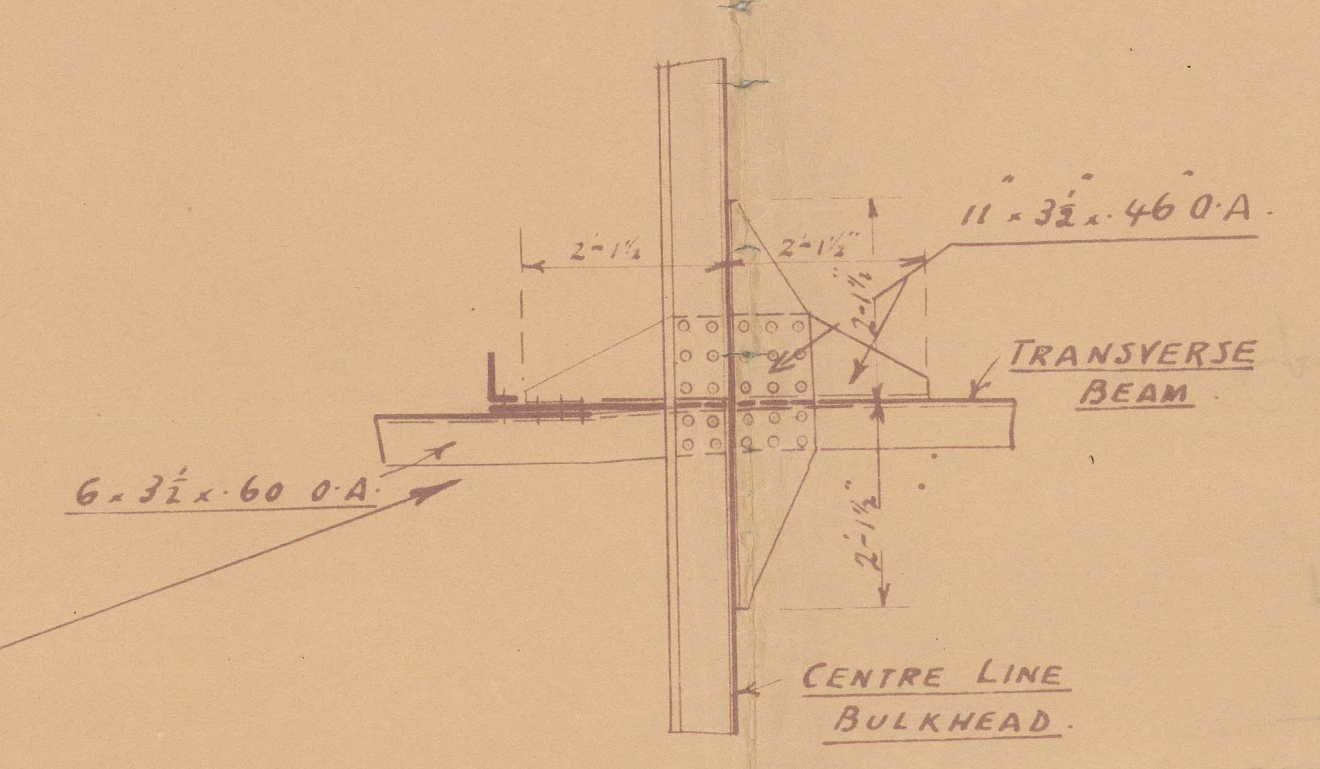
THE BRACKETLESS SYSTEM (PATENT).

TO CLASS LLOYDS 100 A1
CARRYING PETROLEUM IN BULK.

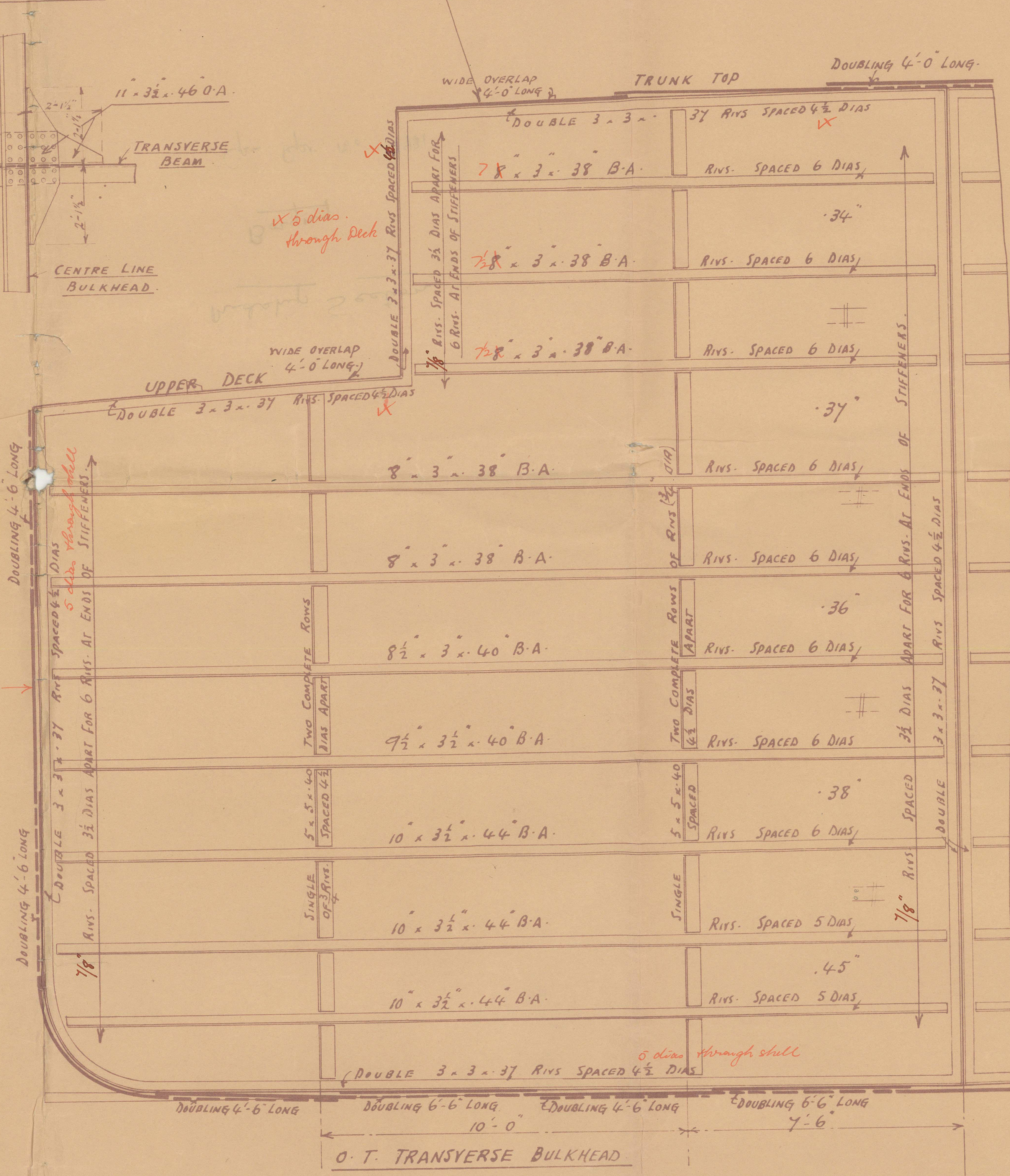
SCALE 1/2" = 1 FOOT.

EQUIPMENT TO RULE.

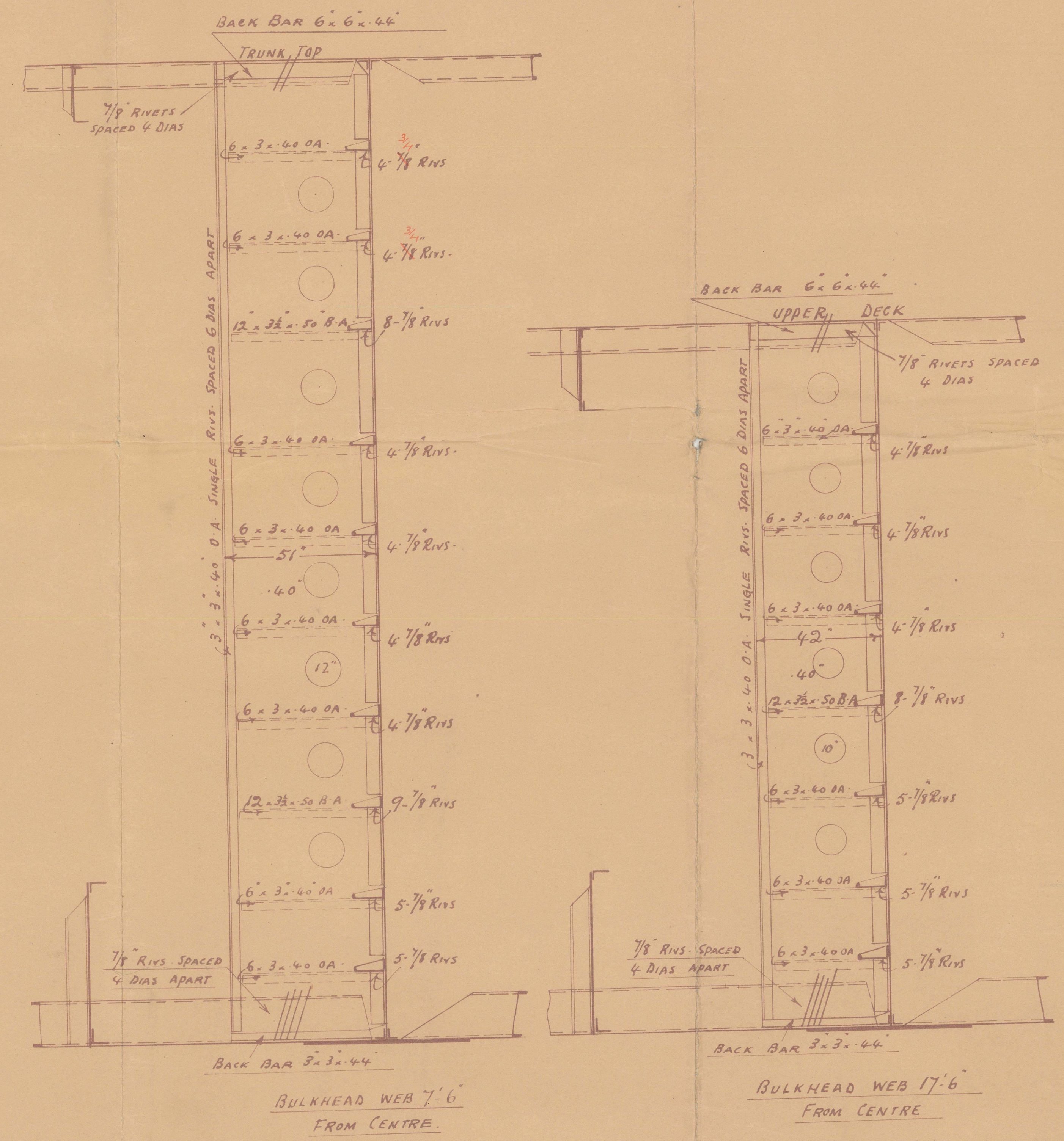
CONNECTION OF TRANSVERSE TO CENTRE
LINE BULKHEAD.



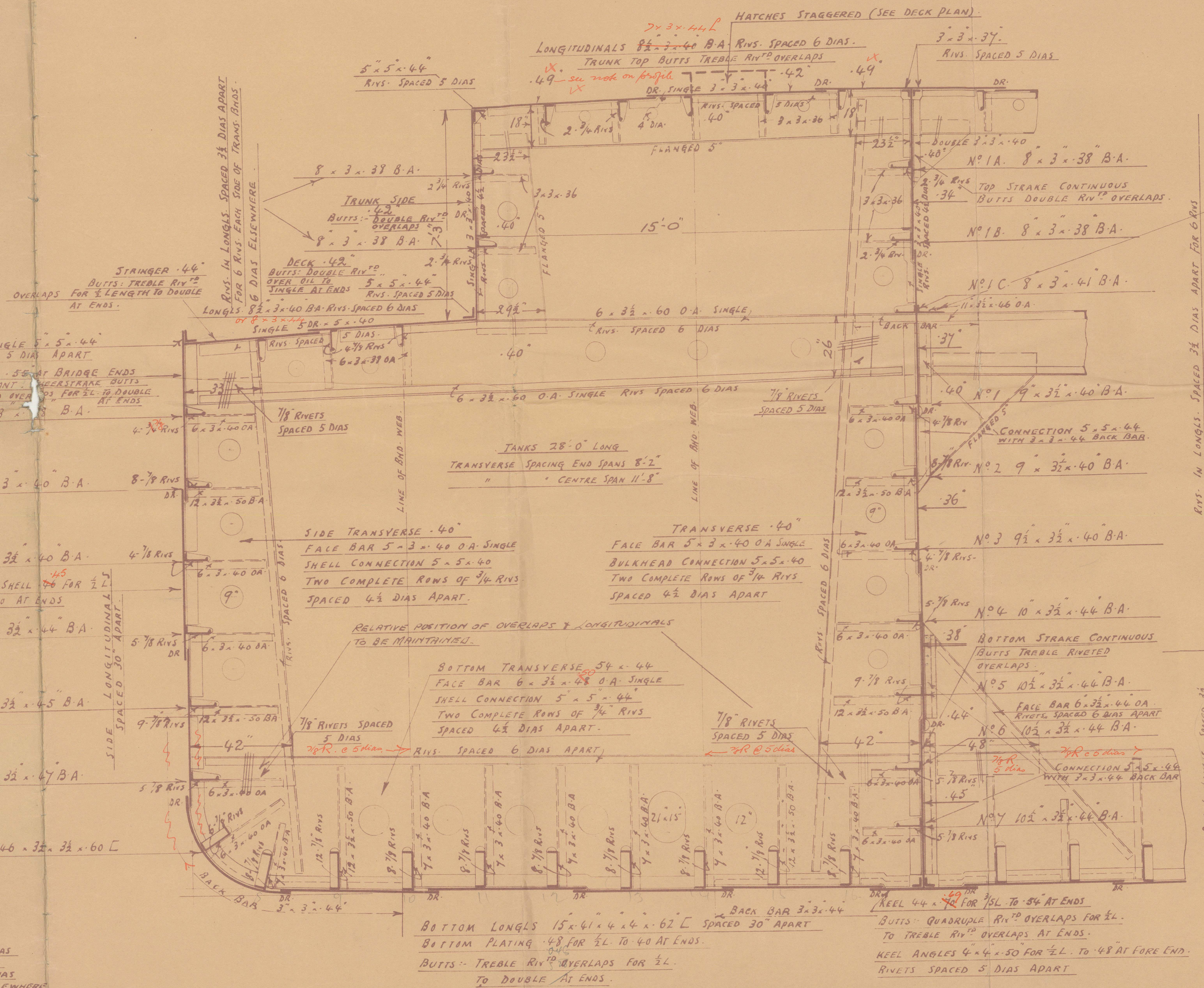
TEST HEAD 5'-0" ABOVE TOP OF TRUNK.



ALL LONGITUDINALS TO BE NOT MORE THAN 3/4" CLEAR OF BULKHEAD BOUNDARY ANGLES.
END RIVET TO BE AS CLOSE AS PRACTICABLE TO END OF BAR IN ALL LONGITUDINALS & STIFFENERS.
NOTCHES FOR LONGITUDINALS TO BE WELL ROUNDED AT CORNERS AND NOT ROUGH PUNCHED.
LIGHTENING HOLES IN TRANSVERSES TO MAINTAIN THE SAME RELATIVE POSITION TO SHELL
AS SHOWN ON MIDSHIP SECTION AND NOT TO BE LESS THAN 8" CLEAR OF NOTCHES.
TRANSVERSE & CENTRE LINE BULKHEAD PLATING & BOUNDARY ANGLES IN N°1 TANK
TO BE AS PER RULE.
TRANSVERSE & CENTRE LINE BULKHEAD & TRUNK SIDE STIFFENERS TO BE SUITABLY INCREASED
FOR SHEAR IN N°1 TANK.



LLOYDS NUMERALS
 $L \times D = 305 \times 19 = 5795$
 $L \times (D+2) = 305 \times (19+2) = 2445$
 $L/D = 305/19 = 16.05$



LONGITUDINALS SPACED 32 DIAS APART
WHERE RIVS CLEAR OF DOUBLINGS
TRANSVERSES 6 DIAS APART ELSEWHERE

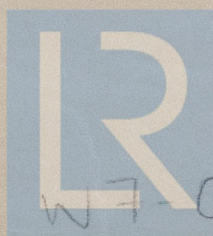
8.11.27

W7-0098

Midship Section

"Borgny"

Cpn. Rpt. No. 7931.



© 2021

Lloyd's Register
Foundation