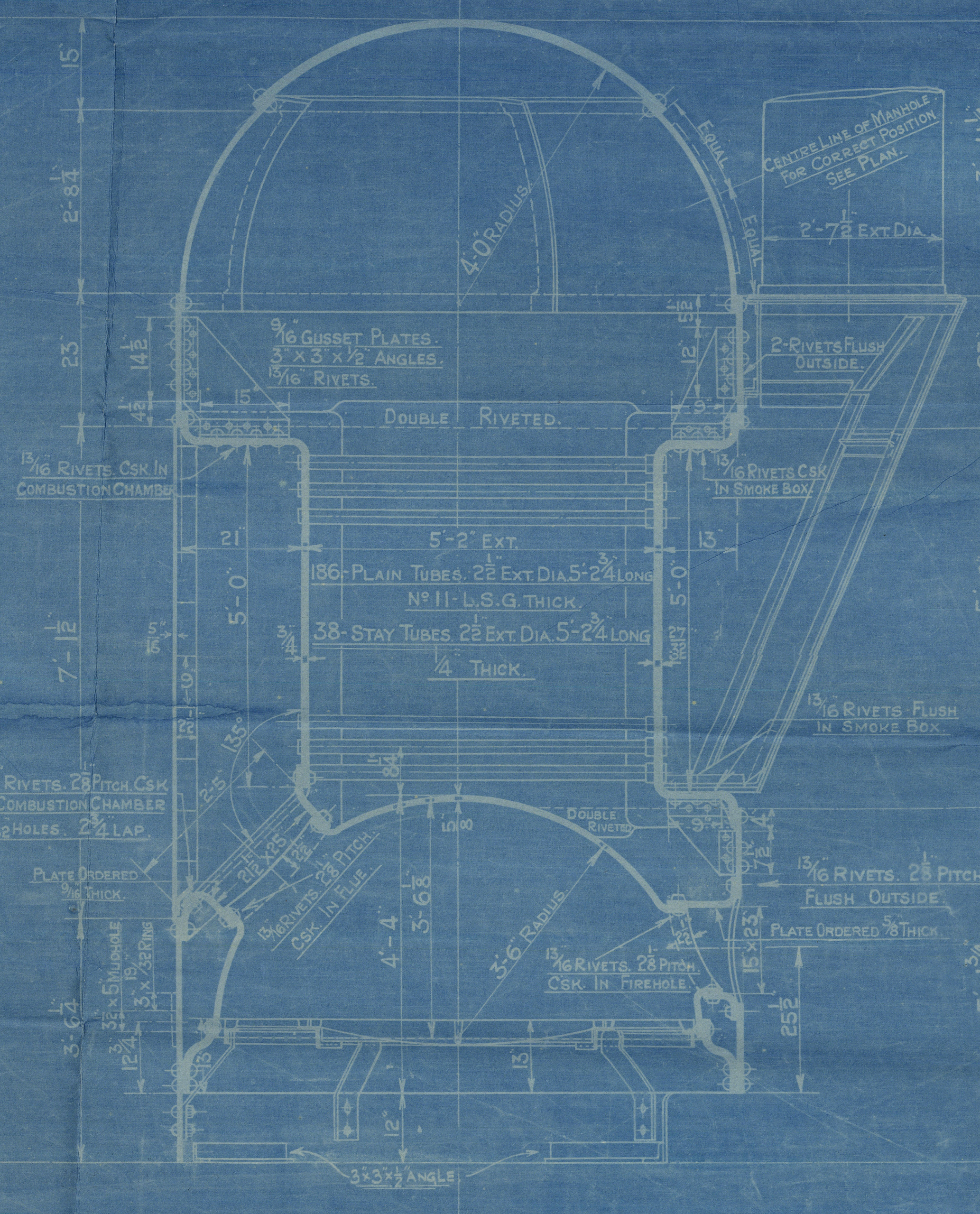
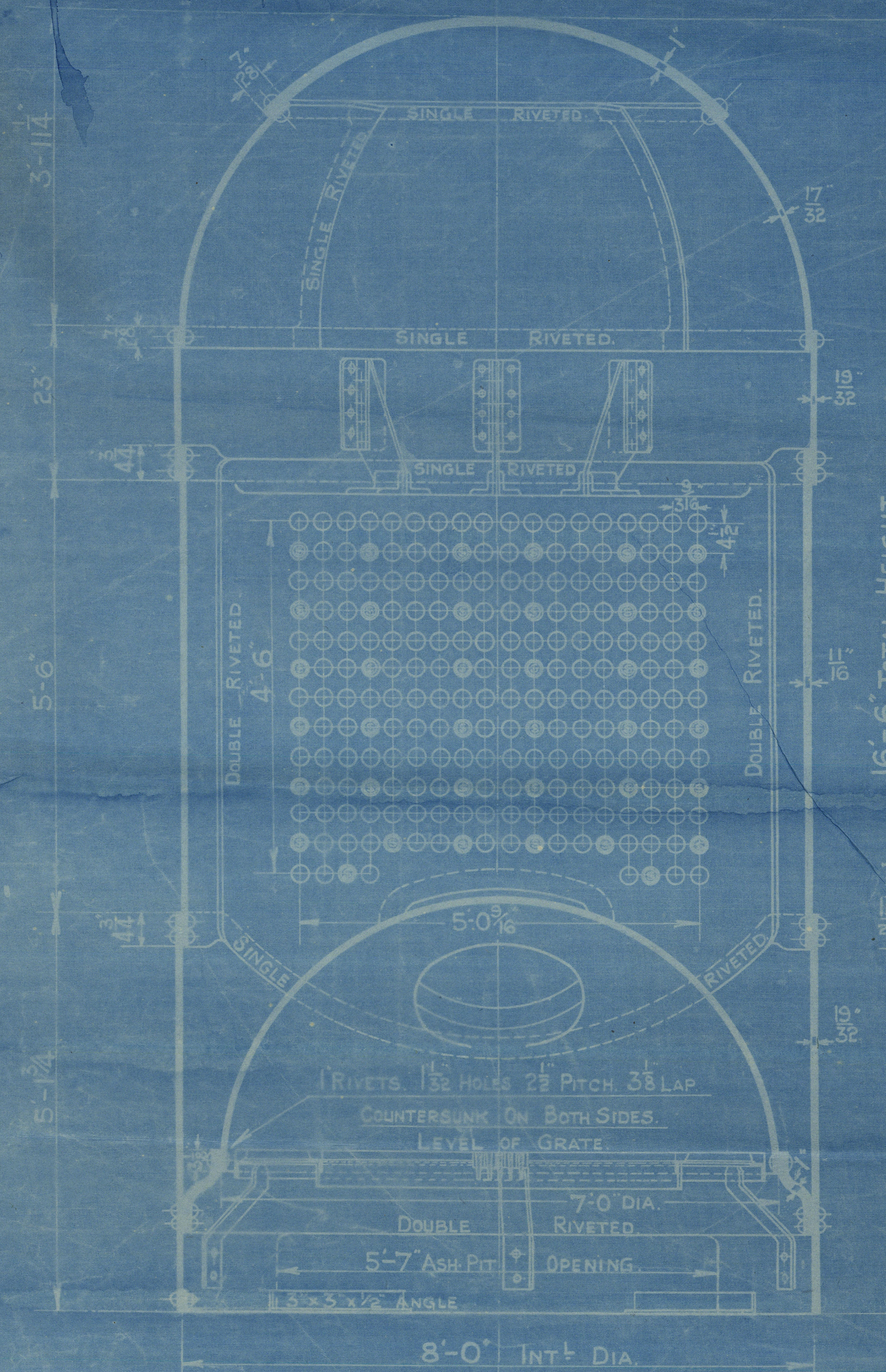
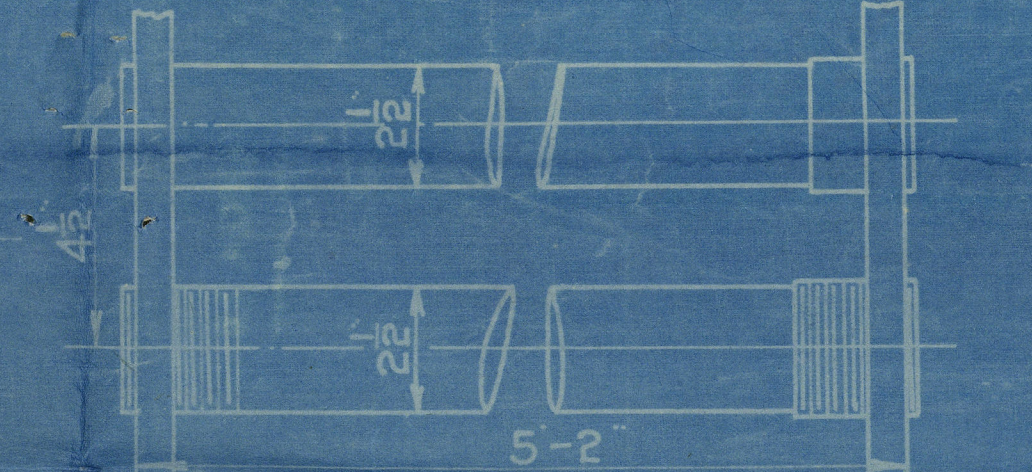


COCHRAN PATENT VERTICAL MULTITUBULAR BOILER.

HORIZONTAL FLUE TUBES.



PLAIN TUBE HOLES 2 1/2" DIA. IN BACK TUBE PLATE. PLAIN TUBE HOLES 2 1/2" DIA. IN FRONT TUBE PLATE.



STAY TUBE HOLES SCREWED 2 1/2" DIA. IN BACK TUBE PLATE. STAY TUBE HOLES SCREWED 2 1/2" DIA. IN FRONT TUBE PLATE. SCREWED 11-THREADS PER INCH. SCALE 3" = 1 FOOT.

HEATING SURFACE	
TUBES	740 S.F.
PLATE	110 "
TOTAL	850 "
GRATE AREA	37 "

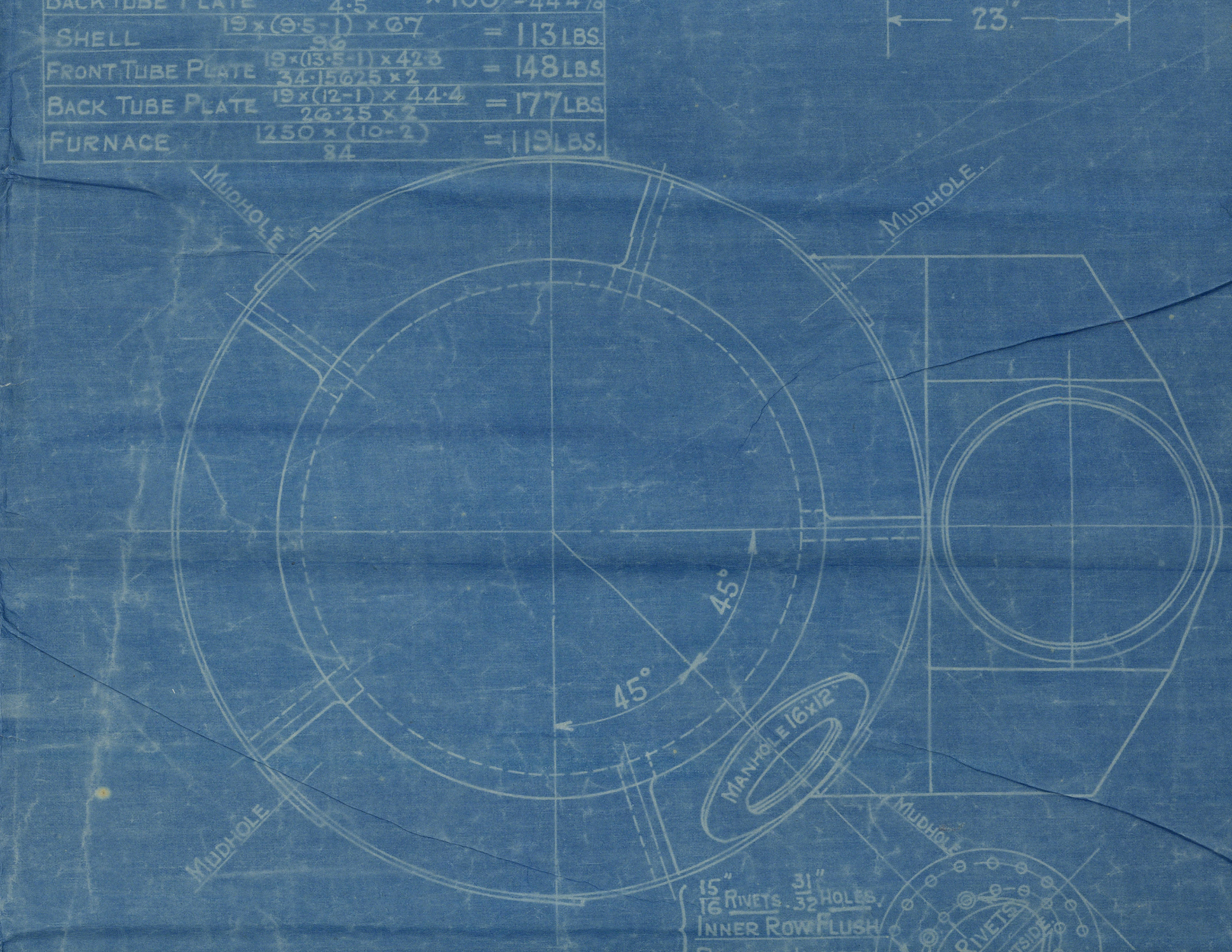
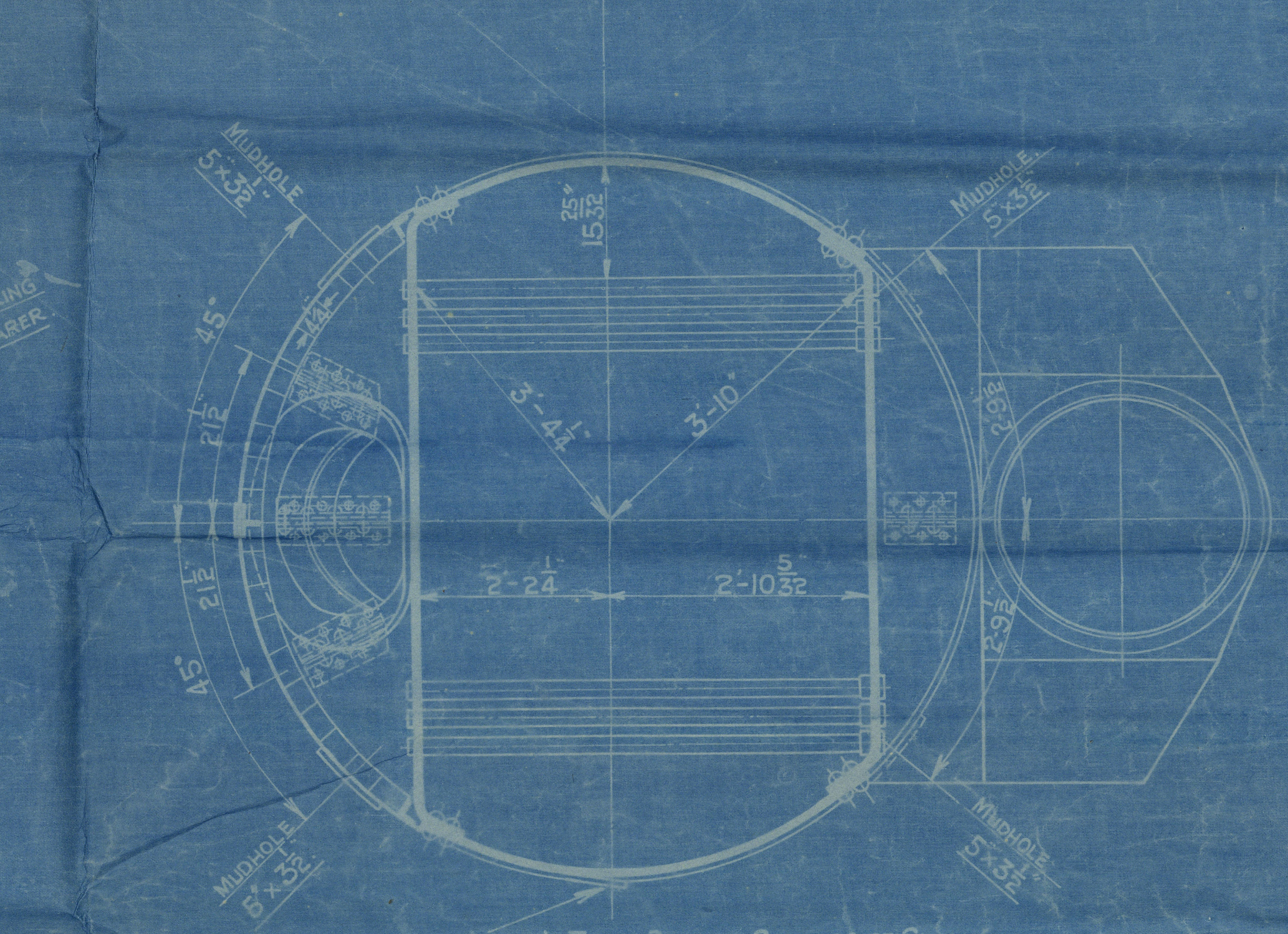
LLOYDS	
PLATE	3'02" x 6'875" x 100 = 67.9%
RIVETS	2 x 3/4" x 3/4" x 100 = 69.4%
FRONT TUBE PLATE	4'5" x 6'875" x 100 = 42.3%
BACK TUBE PLATE	4'5" x 6'875" x 100 = 44.4%
SHELL	19' x 6'875" x 100 = 108.7%
FRONT TUBE PLATE	20'5" x 6'875" x 100 = 100.6%
BACK TUBE PLATE	20'5" x 6'875" x 100 = 104.9%
FURNACE	12'50" x 10' = 119.1%
OGEE RING	5'6" x 16'2" x 100 = 114.6%

BUREAU VERITAS	
SHELL	3'02" x 6'875" x 100 = 122.1%
RIVETS	2' x 3/4" x 3/4" x 100 = 108.1%
FRONT TUBE PLATE	4'5" x 6'875" x 100 = 122.6%
BACK TUBE PLATE	4'5" x 6'875" x 100 = 114.7%
FURNACE	12'50" x 10' = 114.1%

BRITISH CORPORATION	
PLATE	3'02" x 6'875" x 100 = 67.9%
RIVETS	2 x 3/4" x 3/4" x 100 = 69.4%
FRONT TUBE PLATE	4'5" x 6'875" x 100 = 42.3%
BACK TUBE PLATE	4'5" x 6'875" x 100 = 44.4%
SHELL	19' x 6'875" x 100 = 113.1%
FRONT TUBE PLATE	20'5" x 6'875" x 100 = 148.1%
BACK TUBE PLATE	20'5" x 6'875" x 100 = 177.1%
FURNACE	12'50" x 10' = 119.1%



BOARD OF TRADE	
PLATE	3'02" x 6'875" x 100 = 67.9%
RIVETS	2 x 3/4" x 3/4" x 100 = 73.1%
FRONT TUBE PLATE	4'5" x 6'875" x 100 = 42.3%
BACK TUBE PLATE	4'5" x 6'875" x 100 = 44.4%
SHELL	19' x 6'875" x 100 = 107.1%
FRONT TUBE PLATE	20'5" x 6'875" x 100 = 135.1%
BACK TUBE PLATE	20'5" x 6'875" x 100 = 164.1%
FURNACE	12'50" x 10' = 119.1%



APPROVED 22.5.16
PATENT BOILER NO 8545.
8'-0" x 16'-6" x 850# x 100 LBS.

SCALE 3/4" INCH TO 1 FOOT.

SIEMENS MARTIN MILD STEEL PLATES.

TENSILE TESTS.

PLATES NOT EXPOSED TO FLAME OR FLANGED 28 TO 32 TONS
PLATES EXPOSED TO FLAME OR FLANGED EXCEPT FURNACE CROWN 26 TO 30 TONS
FURNACE CROWN 26 TO 29 TONS

STANDARD.
SURVEY LLOYDS & BRITISH CORPORATION.

COCHRAN & CO ANNAN L.
ENGINEERS BOILERMAKERS
ANNAN SCOTLAND

DRAWING LR 1138

COCHRAN & CO., ANNAN, LD.

Boiler No. 8545.

Drawing No. 14138

100 lbs per sq inch

Mark on boiler

No 15631
Lloyds Lat
200 lbs
100 lbs
P MCG 17/12/20

GLASGOW REPORT No. 40696



© 2020

Lloyd's Register
Foundation