

18.3.08

MIDSHIP SECTION

STEEL SCREW TRAWLERS

No 431 & 432

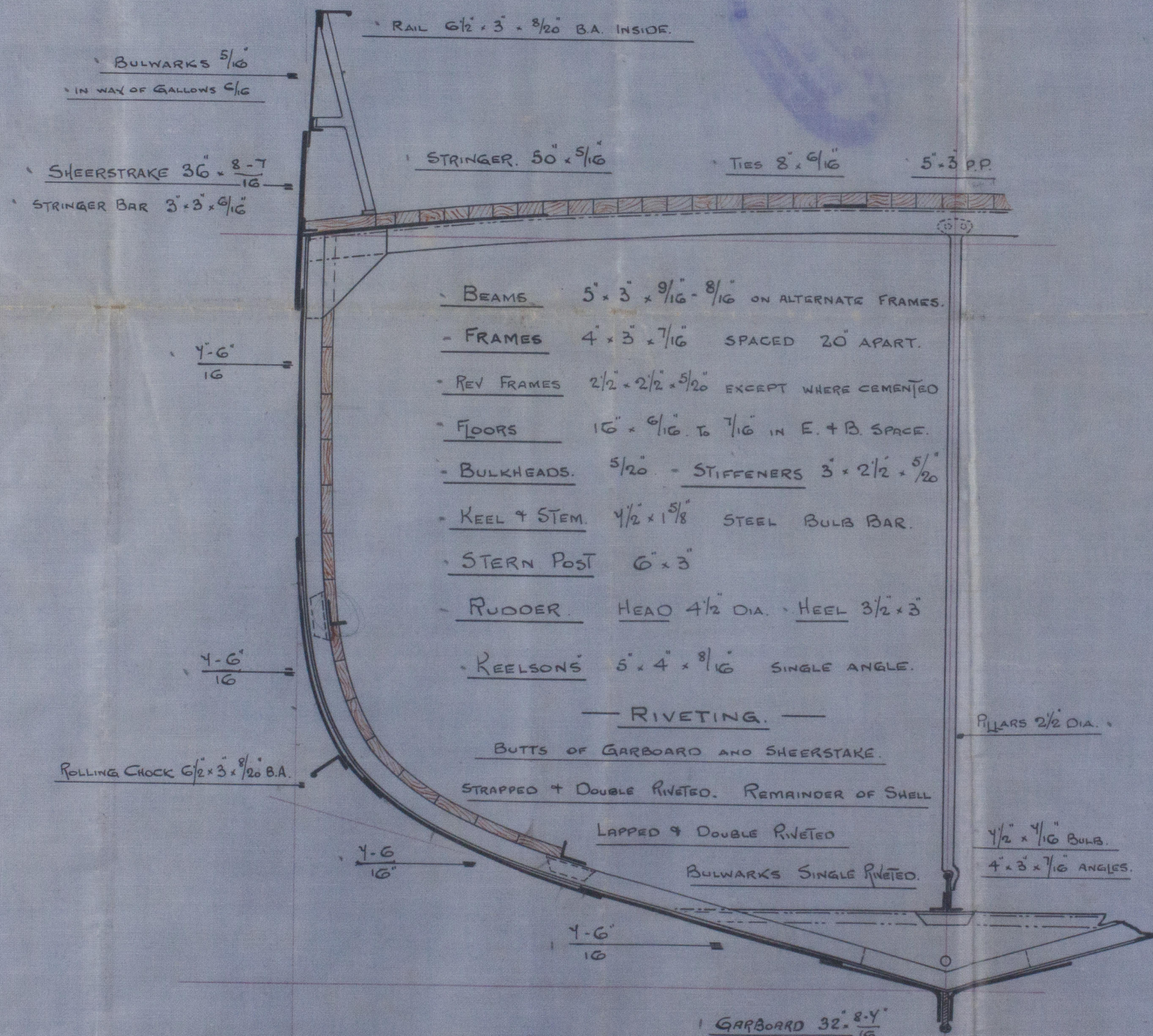
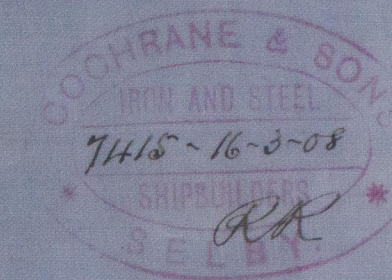
DIMS 127'-0" x 22'-0" x 12'-9" DEPTH MOULDED

SCALE 1/2" = ONE FOOT

CLASS 100 A.1. FOR FISHING PURPOSES.

ENGINE AND BOILER CASING AS PREVIOUSLY APPROVED.

DECK PLATED IN WAY OF ENGINE & BOILER CASING.



NUMERALS.

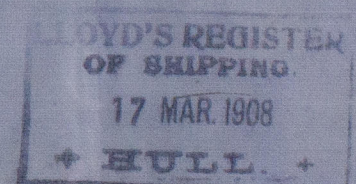
1/2 BREADTH.	10.95	10.95
1/2 GIRTH.	19.75	20.00
DEPTH.	12.95	13.20
	42.65	1ST NUMBER 44.15
LENGTH AS PER RULE 125.84		
	5494 2255	2ND No 5557

PROPORTIONS

BREADTH TO LENGTH.	5.4
DEPTH TO LENGTH.	9.45

EQUIPMENT

1ST BOWER ANCHOR	5 1/2 CWTs EX STOCK
2ND	5 " " "
3RD	2 3/4 " " "
105 FATHOMS	1 1/16 SHORT LINK CABLE.
60	6" HAWSER.
60	4 1/2 WARP.



18.3.08

Cochrane & Sons

No 431 & 432.

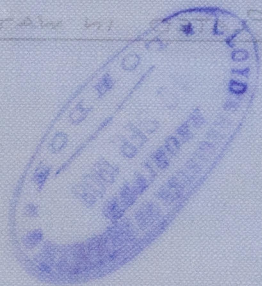
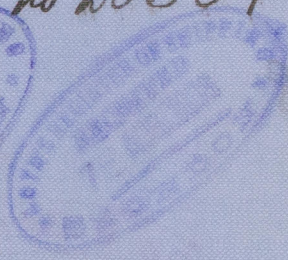
Midship Section

1/2 Premier No 431.

Hull Report No. 20376.

1/2 Varonil (No 432)

Hull Report No 20504



W598-0014



© 2020

Lloyd's Register
Foundation